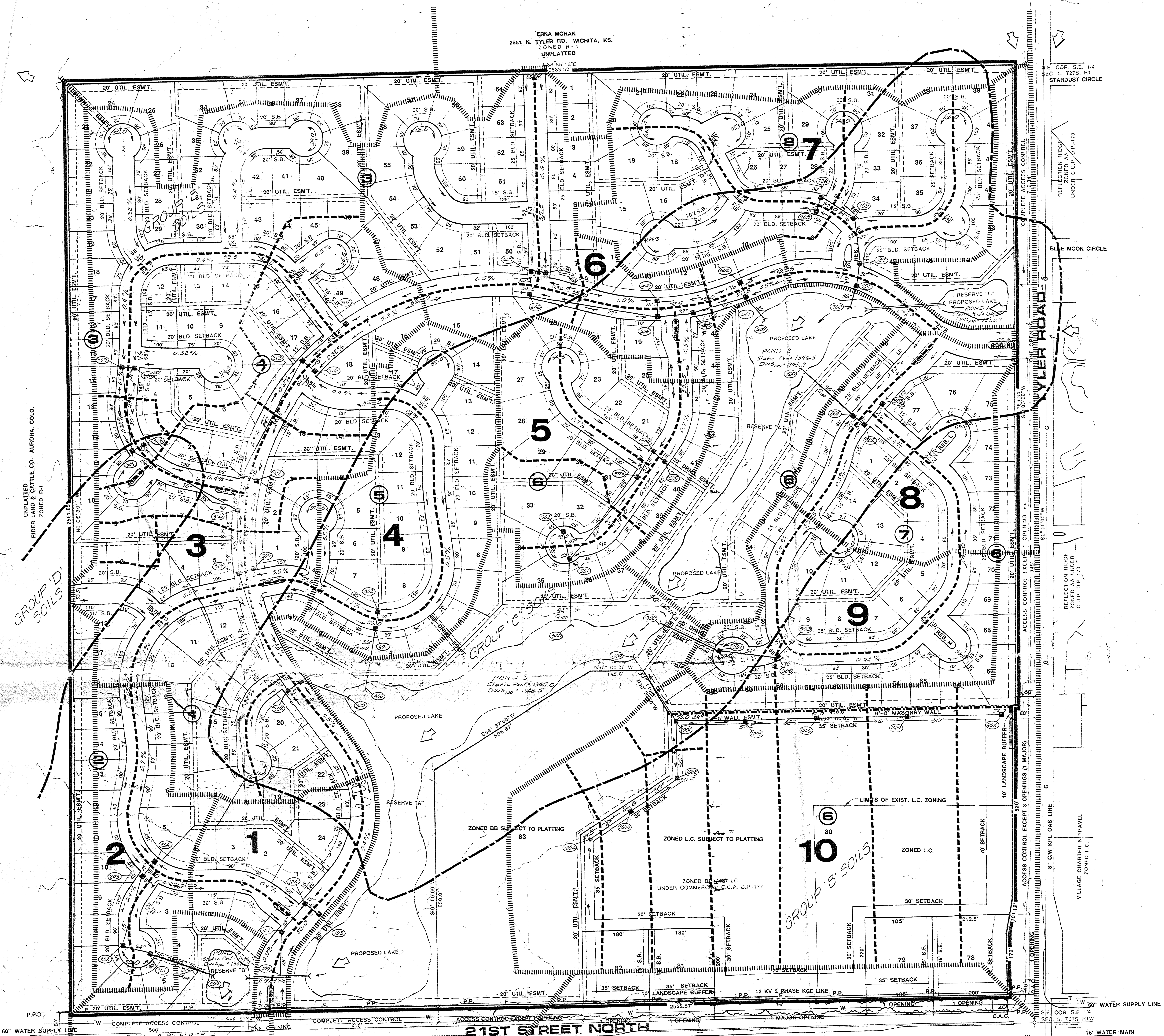


ERNA MORAN  
2851 N. TYLER RD., WICHITA, KS.  
ZONED R-1  
UNPLATTED

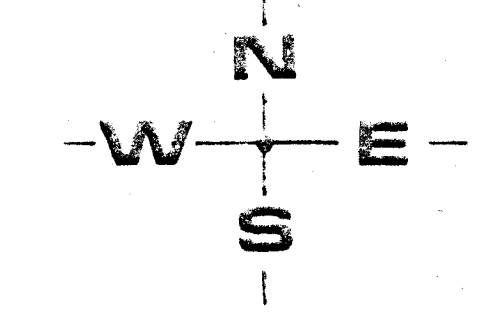
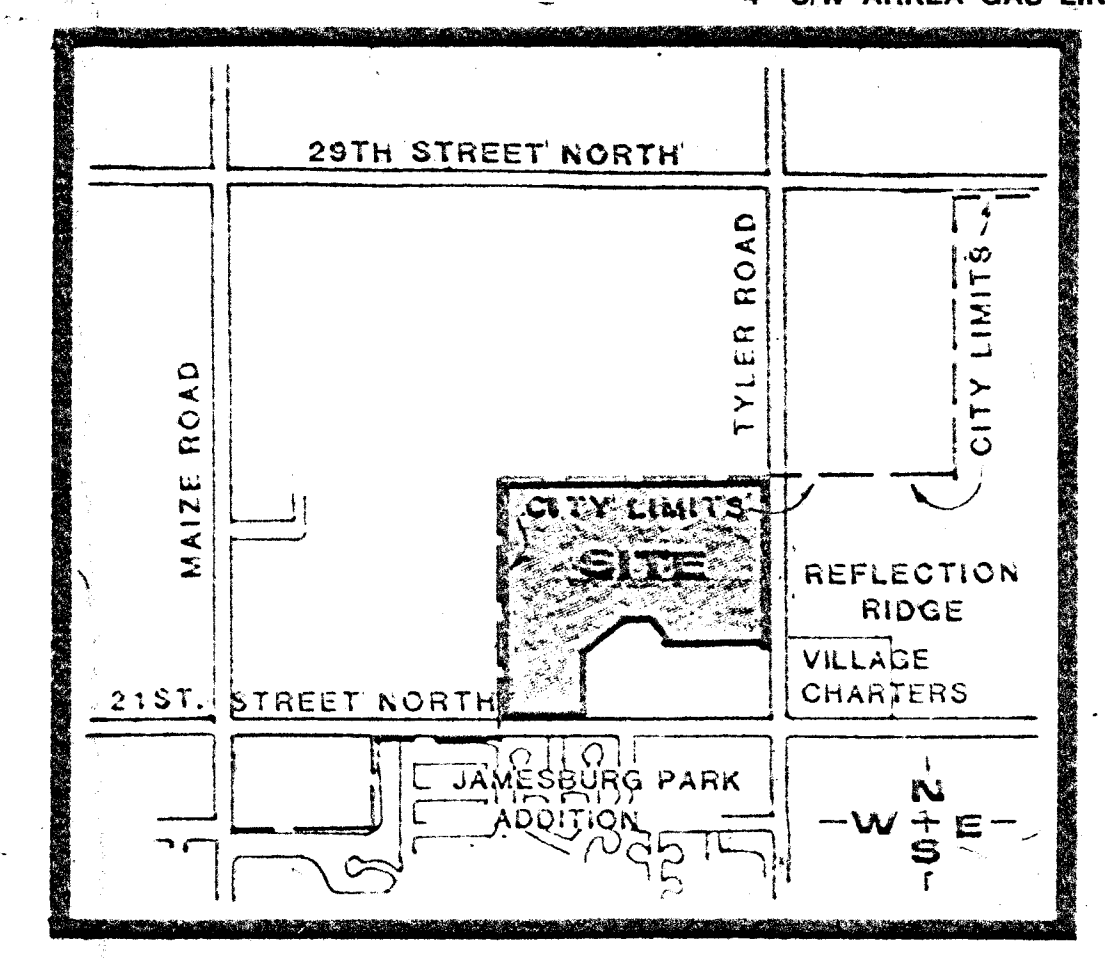


- NOTES**
- 1) A DRAINAGE CONCEPT PLAN IS TO BE PREPARED BY PROFESSIONAL ENGINEERING CONSULTANTS.
  - 2) BENCH MARK: CITY STANDARD DISC, 38" WEST, 90" SOUTH OF THE CENTERLINE OF TYLER ANQ 21ST ST. NO. ELEV. 1357.35 M.S.L.
  - 3) RESERVE DESCRIPTIONS:  
RESERVE "A" SHALL PERMIT - ENTRY MONUMENTS, SIGNAGE, DRAINAGE, DRAINAGE STRUCTURES, SWIMMING POOLS, PUBLIC RESTROOMS, WALKWAYS, LANDSCAPING, GAZEBOS, FOUNTAINS, LAKES, PARKING AS ESTABLISHED UNDER C.U.P., WALLS CONFINED TO EASEMENTS AND UTILITIES CONFINED TO EASEMENTS.  
RESERVE "B" AND "C" SHALL PERMIT - ENTRY MONUMENTS, SIGNAGE, LAKES, DRAINAGE STRUCTURES, DRAINAGE, WALKWAYS, LANDSCAPING, FOUNTAINS AND UTILITIES CONFINED TO EASEMENTS.  
RESERVE "D" THRU "N" SHALL PERMIT - ENTRY MONUMENTS, LANDSCAPING AND UTILITIES CONFINED TO EASEMENTS.
  - 4) TOPOGRAPHY IS FROM AERIAL PHOTO PREPARED BY MILES AIR PHOTO SURVEY, MANHATTAN, KS., 66502. DATED FEB. 10, 1987.

- LEGEND**
- Plat Boundary
  - Drainage Basin Boundary
  - Drainage Sub-Basin Boundary
  - Drainage Direction - Minor Storm
  - Drainage Direction - Major Storm
  - Proposed Storm Sewer & Inlet
  - Hydrologic Soil Group Boundary
  - Proposed Street Elevation
  - Node Identification Point

TOTAL ACRES = 122.21

DRAINAGE PLAN  
**STERLING FARMS**



PROFESSIONAL ENGINEERING CONSULTANTS, P.A.  
ENGINEERS  
WICHITA, KANSAS

OWNER: FITCHIE DEVELOPMENT CORPORATION, 8100 E. 22ND ST. NORTH, BLDG. 500, WICHITA, KS. 67226 PH.684-7300 DATE: OCT. 4, 1988

100 50 0 50 100 200

