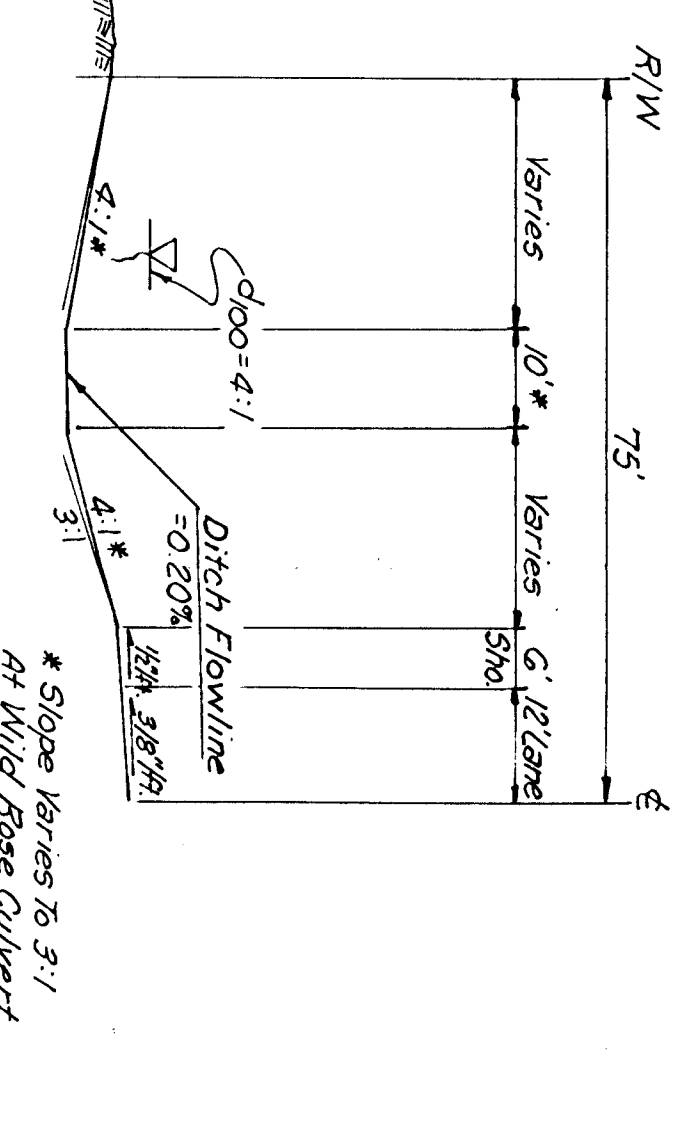
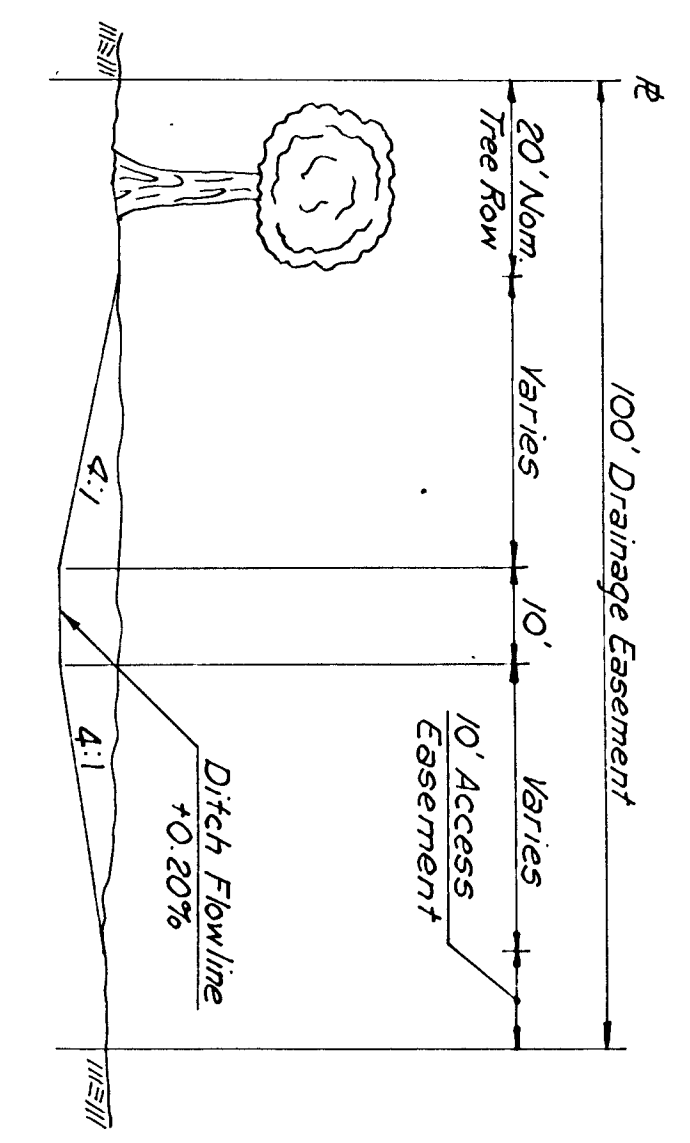
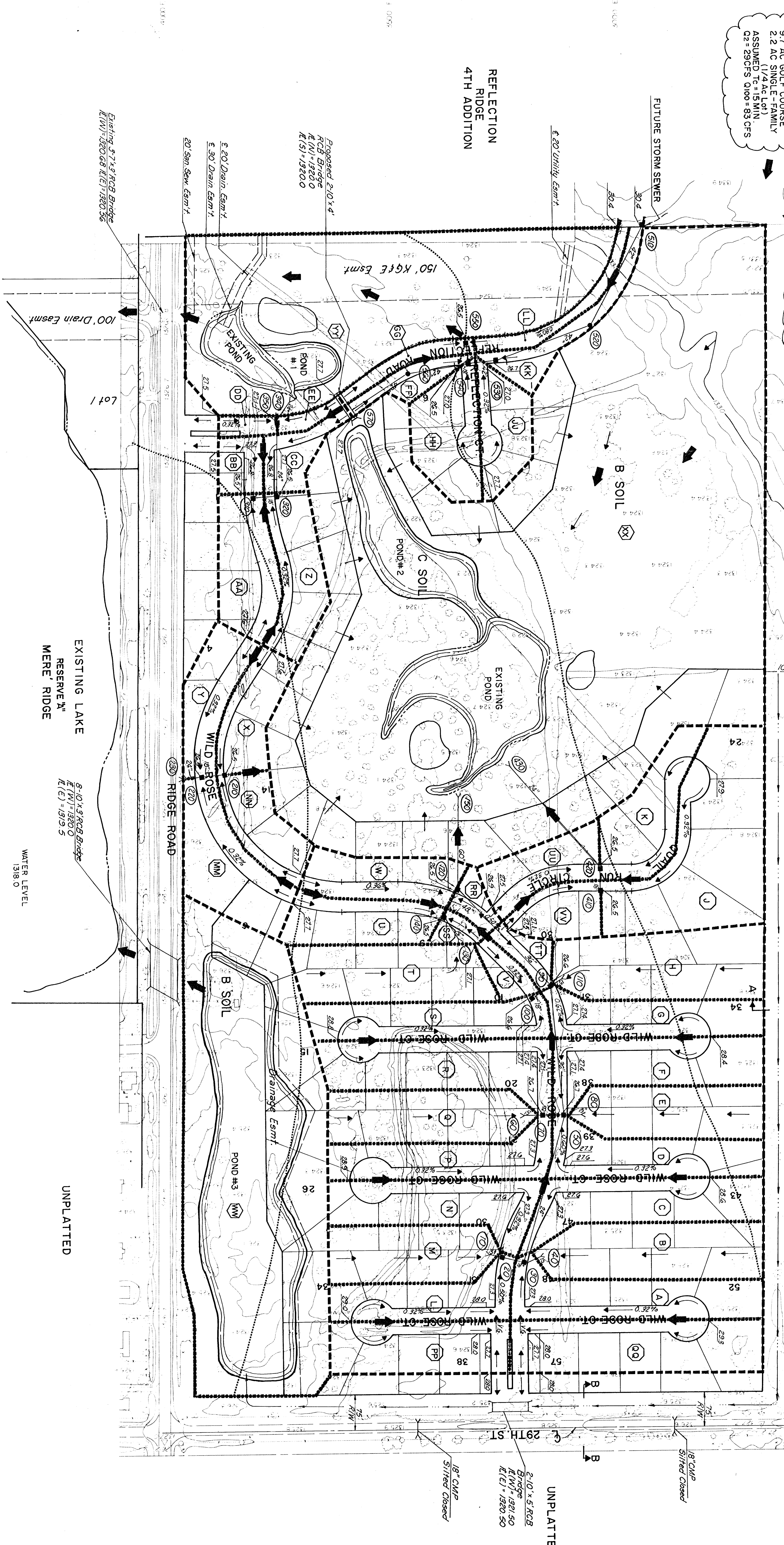


NO.		STATIC SWL		POND DATA		LOCAL STORAGE		NAME		STREET		STREET DATA		WALK DRIVE		NO. OF INLETS		LENGTH	
1	1319.6	1323.9	1323.9	18.7 AC-FT*	100% R/S	18.7 AC-FT*	100% R/S	Reflection Road	100' Driveway	10'	6.5/8" Std.	T.C. + 0.4'	120	1A DWP	2	10'	10'	10'	
2	1319.6	1323.9	1323.9	18.7 AC-FT*	100% R/S	18.7 AC-FT*	100% R/S	Reflection Cr.	100' Driveway	10'	3.5/8" Std.	T.C. + 0.7'	140	1A DWP	2	10'	10'	10'	
3	1319.6	1323.0	1323.0	14.5 AC-FT*	100% R/S	14.5 AC-FT*	100% R/S	Wild Rose Cr.	100' Driveway	10'	5.5/8" Std.	T.C. + 0.7'	410	1A DWP	1	10'	10'	10'	
				COMBINED STORAGE OF POND NOS. 1 & 2				Wild Rose Cr.		100'		T.C. + 0.7'		410		1A DWP		5'	



FUTURE ADDITION
 8.2 AC TOWNHOMES
 9.7 AC GOLF COURSE
 2.2 AC SINGLE-FAMILY
 ASSUMED TC=15 MIN
 C2=290CFS 0.100=83CFS

FUTURE S1/2 W1/2 NE1/4
 25 AC SINGLE FAMILY RESIDENTIAL
 2 AC OPENING FOR A NE
 0.25 AC OPENING FOR A NE
 0.25 AC OPENING FOR A NE
 0.25 AC OPENING FOR A NE



BENCH MARKS

B.M. N.E. CORNER RIDGE ROAD AND 21ST STREET NORTH AND 56 EAST OF THE CENTERLINE OF RIDGE ROAD AND 21ST STREET NORTH.
 ELEV. = 1330.42 M.S.L. = 143.30 CITY DATUM

B.M. - CHRISTIANE CORNER 3'-7" X 3" 918 BRIDGE ON RIDGE ROAD (75' NORTH OF S. COR. N.E. 1/4 SEC. 4 - T2S - R1W)
 ELEV. = 1325.64 MSL.

B.M. - R.S. SPRING IN E. FACE POWER POLE E. 50' NORTH AND 80' EAST OF E. RIDGE NO. 3 STREET NORTH
 ELEV. = 1327.23 MSL.

LEGEND

- Drainage Area Identification
- Inlet w/ Node Identification
- Manhole w/ Node Identification
- Storm Sewer w/ Size
- Open Channel
- Drainage Direction (Minor Storm)
- Drainage Direction (Major Storm)
- Drainage Crest (Minor Storm)
- Drainage Crest (Major Storm)
- Drainage (Top of Curb)
- SCS Hydrologic Soil Group Boundary

No.	Revision	By	Date
1	REFLECTION RIDGE 6TH ADDITION DRAINAGE PLAN		

PROFESSIONAL ENGINEERING CONSULTANTS, P.A.
 ENGINEERS
 WICHITA, KANSAS
 License No. 52463
 Date: Jan, 1991