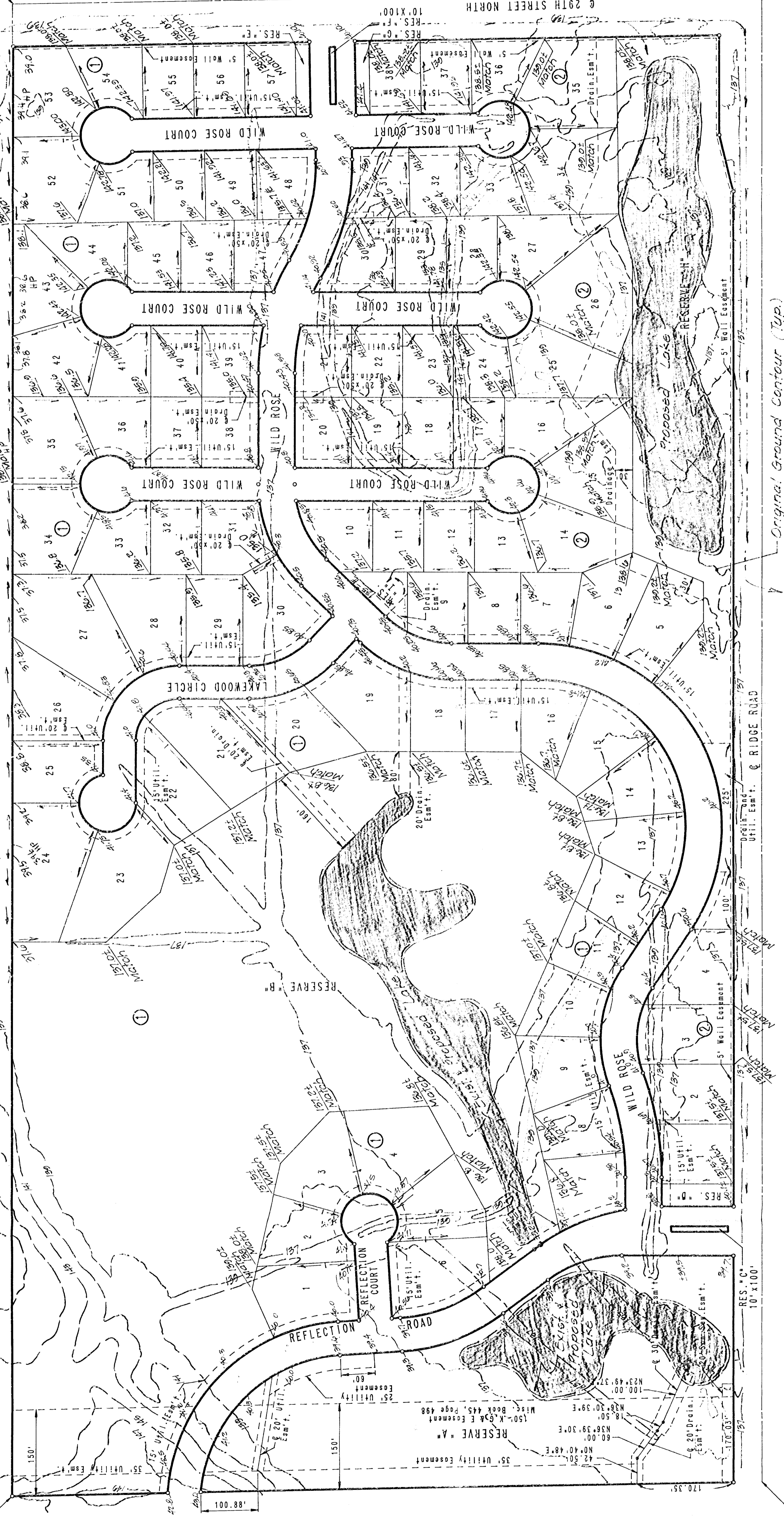


REFLECTION RIDGE 6TH ADDITION TO WICHITA, SEDGWICK COUNTY, KANSAS

Proposed Temporary V Ditch

S.W. COR. E. 1/2, S.E. 1/4
SEC. 4, T. 55S, R. 17W
OF THE 6TH P.M.

N.W. COR. E. 1/2, S.E. 1/4
OF THE 6TH P.M.



SCALE: 1"=100'
 ○ = IRON SET
 ○ = UTILITY EASEMENT
 ○ = BUILDING SETBACK LINE
 ○ = COMPLETE ACCESS CONTROL
 B.M. - CHISELED "O" N.E. COR. J. 7, 23, R. 18
 BRIDGE ON RIDGE ROAD 175' NORTH OF
 S.E. COR. N. 1/2, S.E. 1/4, S.E. 1/4
 ELEV. = 1322.84 M.S.L.
 ELEV. = 1322.84 CITY DATUM
 MINIMUM PAD ELEVATIONS (LOWEST OPENING)
 ALL LOTS = 1327.5 M.S.L.
 1. 147.5' 2. 147.5'

All elevations and contours shown are based on City of Wichita datum.

S.E. COR. N.E. 1/4
OF THE 6TH P.M.

S.E. COR. N.E. 1/4
OF THE 6TH P.M.

**APPROVED
DRAINAGE PLAN**

Revised 2/1/94
 Revised 11/16/91
 Revised 11/7/91

170 "H"
DETAILED DRAINAGE PLAN