

REFLECTION RIDGE 7TH ADDITION TO WICHITA, SEDGWICK COUNTY, KANSAS

SCALE: 1"=100'
 ○ = IRON SET
 ○ = EXISTING IRON
 --- = B.S.L. = BUILDING SETBACK LINE

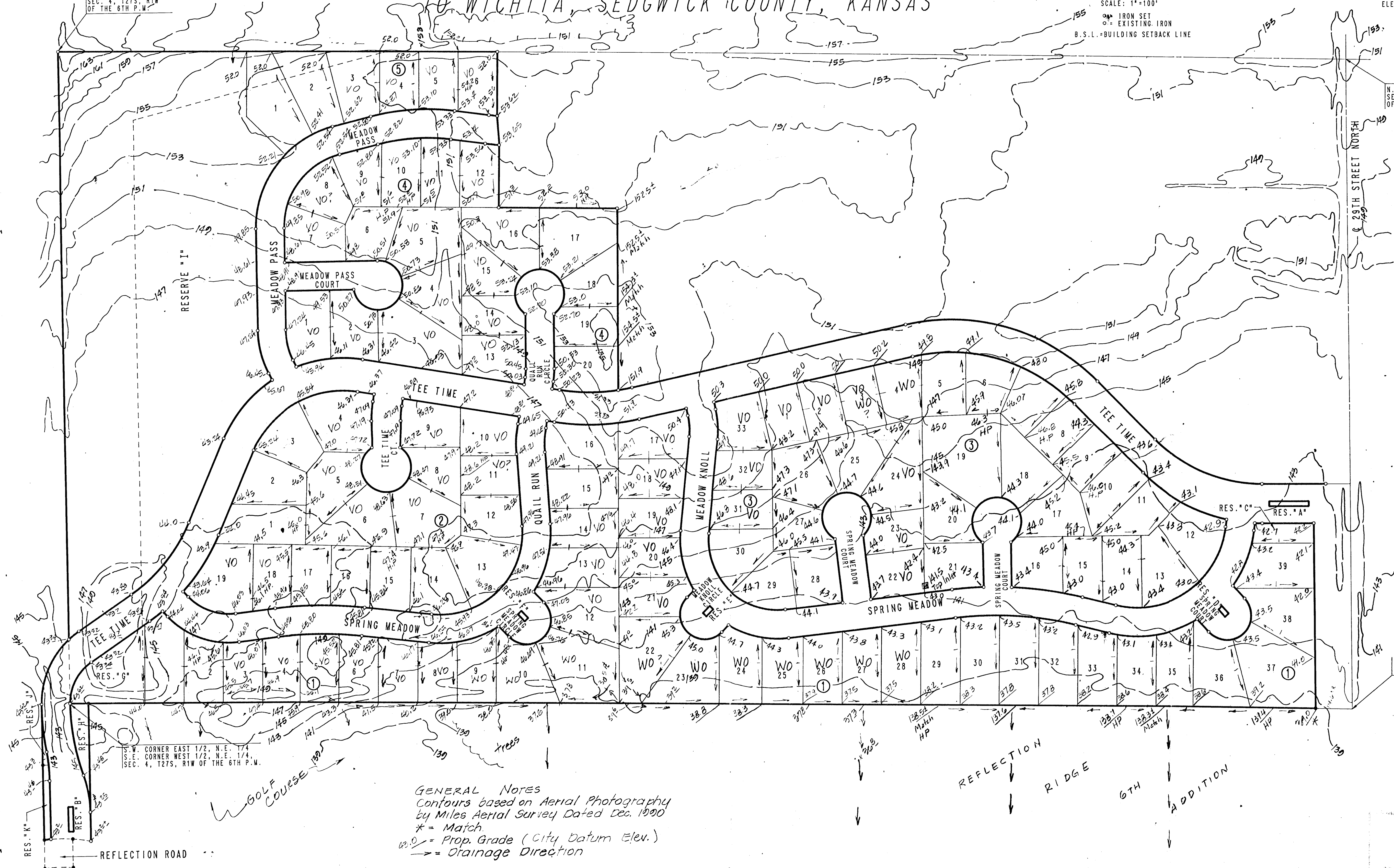
B.M. - CHISELED 4" N.E. CORNER 3-7'-3" RCB
 BRIDGE ON RIDGE ROAD 175 FEET NORTH
 OF S.E. CORNER N.E. 1/4, T27S, R1W
 ELEV. = 1325.64 M.S.L.
 CITY DATUM 138.46

S.W. CORNER N.E. 1/4
 SEC. 4, T27S, R1W
 OF THE 6TH P.W.

N.W. CORNER N.E. 1/4
 SEC. 4, T27S, R1W
 OF THE 6TH P.W.

N.E. CORNER WEST 1/2, N.E. 1/4
 SEC. 4, T27S, R1W OF THE 6TH P.W.

S.W. CORNER EAST 1/2, N.E. 1/4
 S.E. CORNER WEST 1/2, N.E. 1/4
 SEC. 4, T27S, R1W OF THE 6TH P.W.



GENERAL NOTES
 Contours based on Aerial Photography
 by Miles Aerial Survey Dated Dec. 1990
 * = Match
 W.O. = Prop. Grade (City Datum Elev.)
 -> = Drainage Direction

APPROVED
 DRAINAGE PLAN

Revised 6/19/92
 Revised 6/2/92
 Revised 11/18/91

Reflection Ridge 7th
 DETAILED DRAINAGE PLAN

170' I