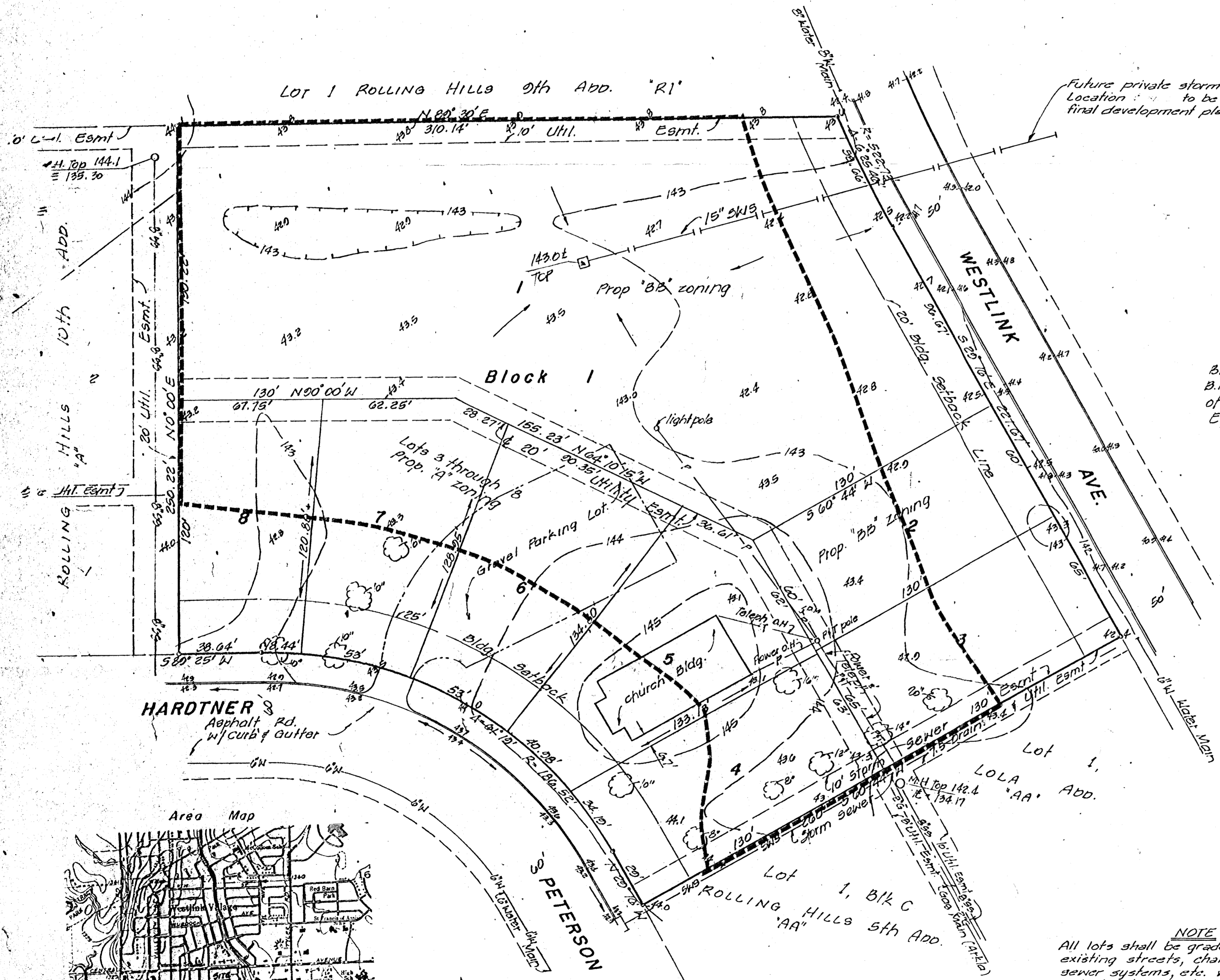
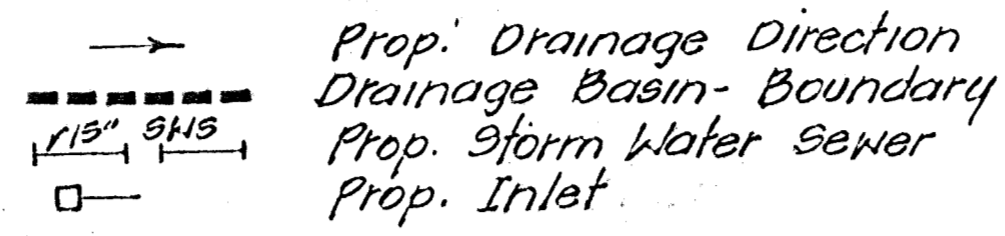


THUNDERBIRD 6TH ADDITION

CONTRACT PURCHASER:
 Thunderbird Realty, Service, Inc.
 c/o Dave Entriken
 6700 W. Central No. 104
 Wichita, Ks. 67212

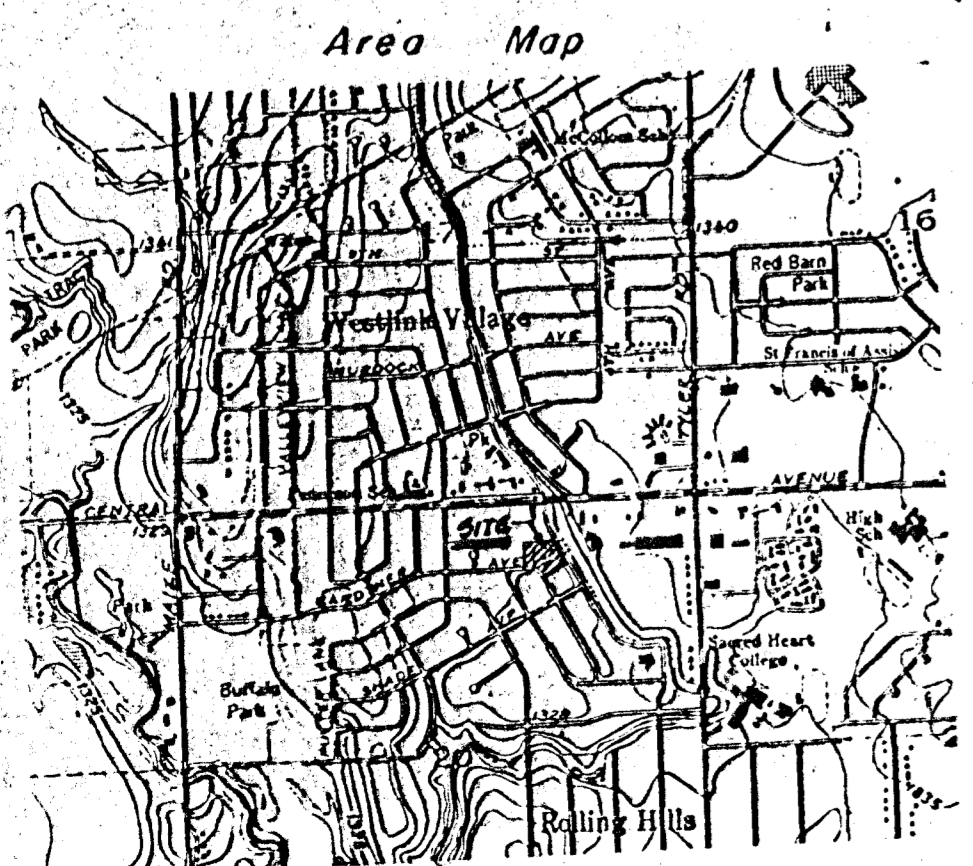
ENGINEER:
 Professional Engineering Consultants p.a.
 1440 English
 Wichita, Ks. 67211

LEGEND



Future private storm water sewer.
 Location to be based on
 final development plan.

Scale 1" = 30'
 B.M. at Tyler Rd & Central
 B.M. disc 56.2' N. & 38' W
 of center line of both.
 Elev. = 143.003 City Datum
 March 1989



Note: Topo by Baughman Co.
 July, 1985

NOTE
 All lots shall be graded to drain to
 existing streets, channels, storm water
 sewer systems, etc. via drives, flumes,
 private storm water sewers and/or
 other approved drainage facilities.

