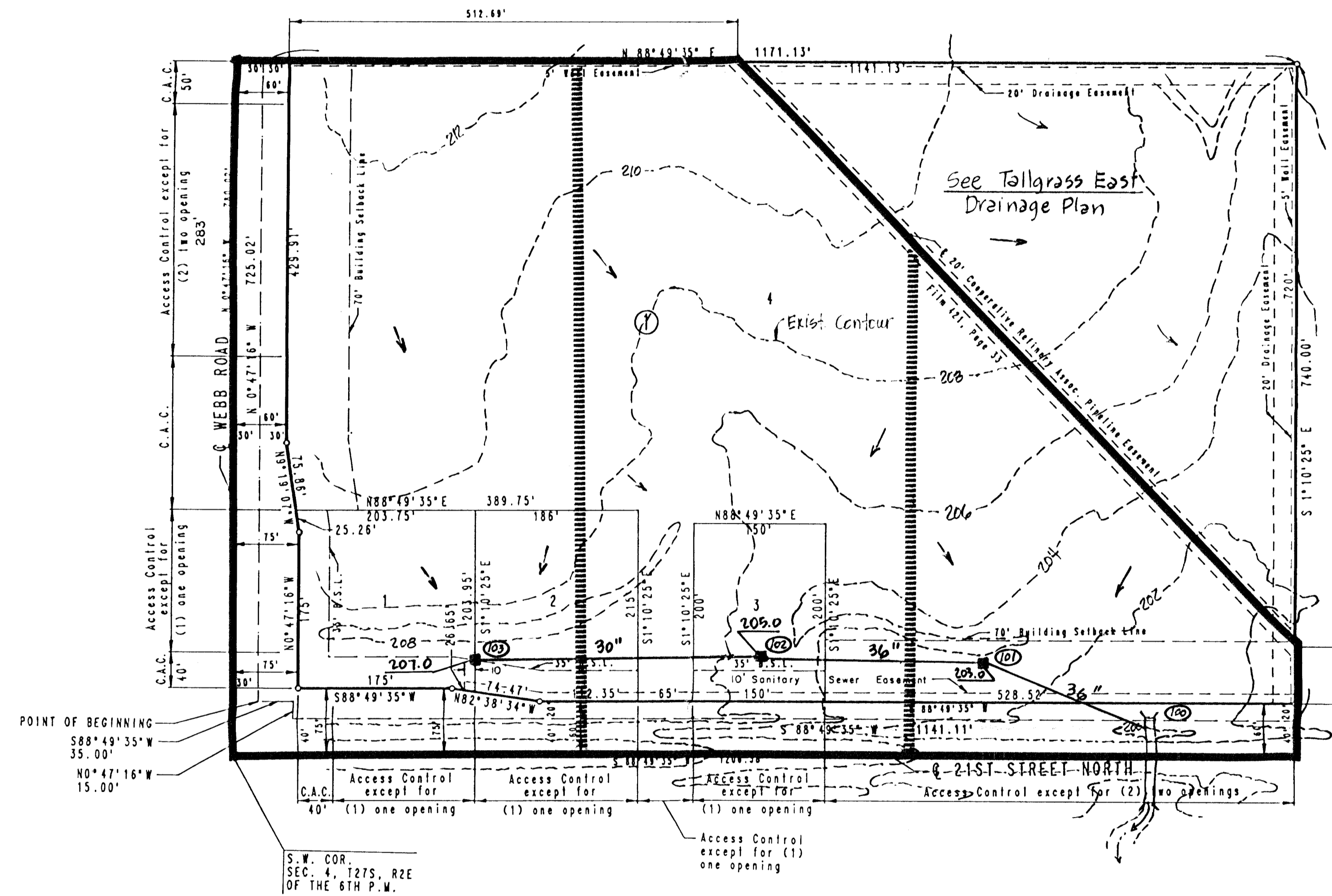


TALLGRASS EAST COMMERCIAL

TO WICHITA, SEDGWICK COUNTY, KANSAS



SCALE: 1" = 100'

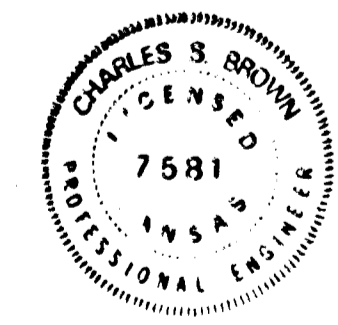
○ = IRON SET
 - - - = B.S.L. - BUILDING SETBACK LINE
 - - - = C.A.C. - COMPLETE ACCESS CONTROL

B.W. - CITY OF WICHITA B.W. DISC 44 FT. SOUTH AND 48 FT. EAST OF INTERSECTION OF CENTERLINES OF WEBB ROAD AND 21ST STREET NORTH. ELEV. = 205.238 CITY DATUM ELEV. = 1392.638 W.S.L.

LEGEND

- Drainage Basin Boundary
- Drainage Sub-Basin Boundary
- Proposed SWS & Inlet
- Node Identification Point

Note: All areas shall be graded to drain to existing streets, ditches, storm sewers via drives, flumes, private storm sewers (sizes shown hereon) and/or other approved drainage facilities.



DRAINAGE PLAN

PROFESSIONAL ENGINEERING CONSULTANTS, P.A.
ENGINEERS
 WICHITA, KANSAS

| | |
|------------------------|-----------------------------|
| Designed by <i>CSB</i> | Checked by |
| Drawn by <i>CSB</i> | Date <i>1-19-88</i> Job No. |