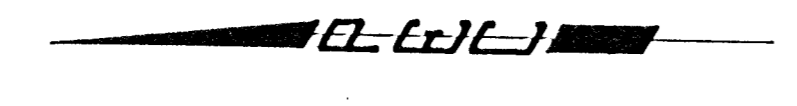


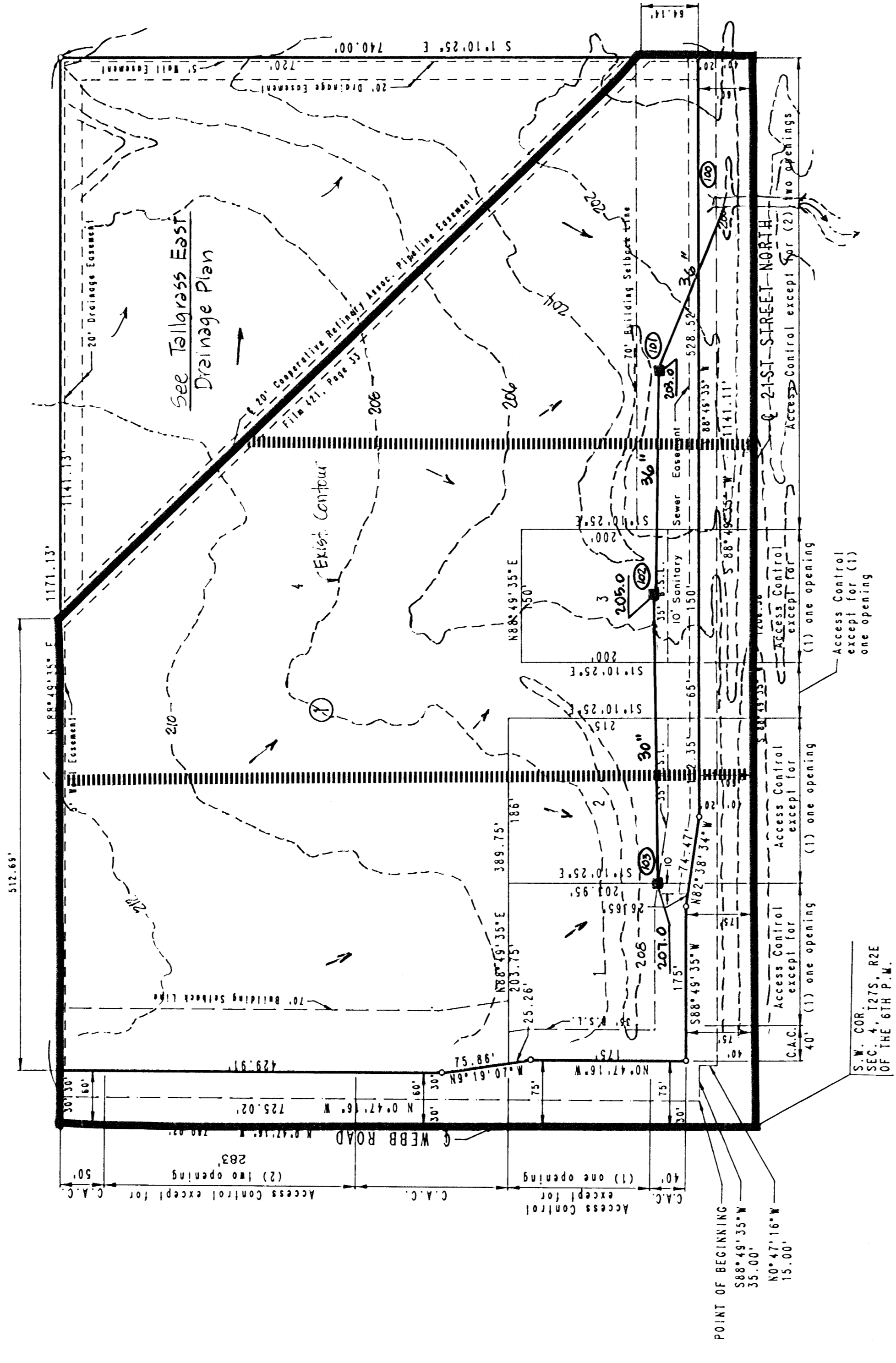
TOTAL SHEETS	1
SHEET NO.	1

TALLGRASS EAST COMMERCIAL

TO WICHITA, SEDGWICK COUNTY, KANSAS

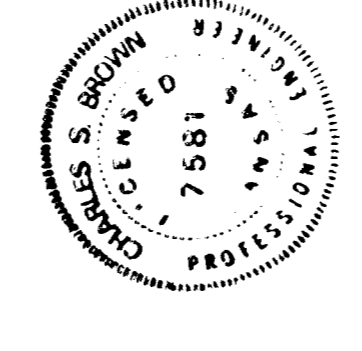


SCALE: 1" = 100'
 8 S.I. 1" IRON SET
 C.A.C. COMPLETE ACCESS CONTROL
 B.M. - CITY OF WICHITA B.M. DISC 44 FT.
 SECTION 16, 17, 18, 19, 20, 21, 22, 23, 24, 25, 26, 27, 28, 29, 30, 31, 32, 33, 34, 35, 36, 37, 38, 39, 40, 41, 42, 43, 44, 45, 46, 47, 48, 49, 50, 51, 52, 53, 54, 55, 56, 57, 58, 59, 60, 61, 62, 63, 64, 65, 66, 67, 68, 69, 70, 71, 72, 73, 74, 75, 76, 77, 78, 79, 80, 81, 82, 83, 84, 85, 86, 87, 88, 89, 90, 91, 92, 93, 94, 95, 96, 97, 98, 99, 100
 ELEV. -1122.258 M.S.L. DATUM



- LEGEND**
- Drainage Basin Boundary
 - Drainage Sub-Basin Boundary
 - Proposed SWS & Inlet
 - Node Identification Point

Note: All areas shall be graded to drain to existing streets, ditches, storm sewers, drives, flumes, private storm sewers (sizes shown hereon) and/or other approved drainage facilities.



DRAINAGE PLAN

PROFESSIONAL ENGINEERING CONSULTANTS, P.A.
 WICHITA, KANSAS

Designed by	CSB	Checked by	
Drawn by	CSB	Date	7-19-88
Job No.			