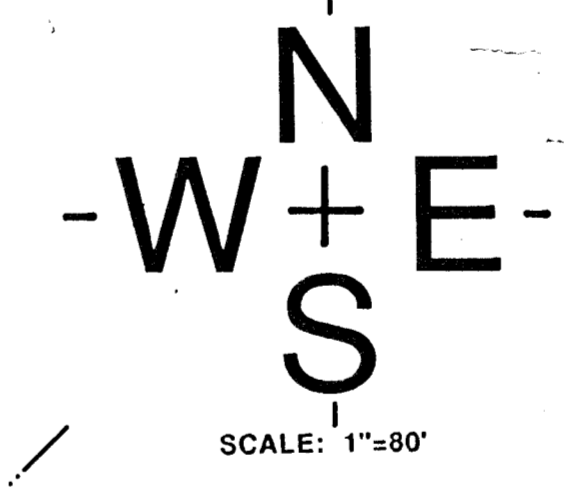


- LEGEND**
- Drainage Direction - Minor Storm
 - ⇨ Drainage Direction - Major Storm
 - Proposed SWS # Inlet
 - Existing SWS # Inlet
 - VG. Proposed Valley Gutter
 - ▬ Drainage Basin Boundary
 - ▬ Drainage Sub-Basin Boundary
 - 22.01 Approx Future St. Elev.
 - ⊙ Node Identification Point

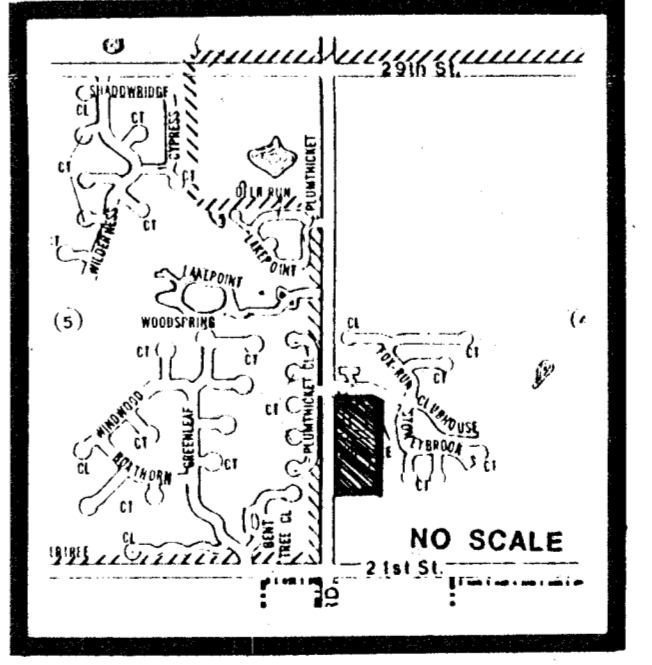


SLAWSON INVESTMENT CORP.
ZONED L.C. SUBJECT TO PLATTING

NOTES:

PLAT IS SUBJECT TO GENERAL PROVISIONS OF TALLGRASS II CUP DP-163
DRAINAGE CONCEPT PLAN TO BE PREPARED BY P.E.C. AND SUBMITTED TO CITY ENGINEER.
RESERVES "A THRU G" SHALL PERMIT LANDSCAPING, ENTRY MONUMENTS, WALKS AND UTILITIES CONFINED TO ESMTS.

PROFESSIONAL ENGINEERING CONSULTANTS, P.A.			
ENGINEERS WICHITA, KANSAS			
Designed by	Job No.	Date	Sh. of
CEB	91006	2/22/91	1 of 1
Drawn by			

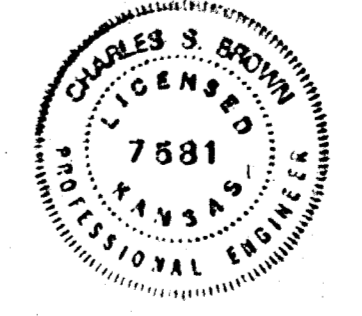


LOCATION MAP

DRAINAGE PLAN 2/22/91
A REPLAT OF A PORTION OF TALLGRASS EAST ADDITION.

TALLGRASS EAST 5TH ADDITION

OWNER: RITCHIE ASSOCIATES, 8100 E. 22ND ST. NO. BLD. 1000, WICHITA, KANSAS 67226



SHEET PROJECT
OF TALLGRASS EAST
5TH ADDITION

SHEET TITLE
PRELIMINARY PLAT.

DATE DEC. 24, 1990
REV.

BILL G. YUNG DESIGN
4912 E. 29TH STREET NORTH
318-683-2567 WICHITA, KS. 67220
FAX 318-683-9298

