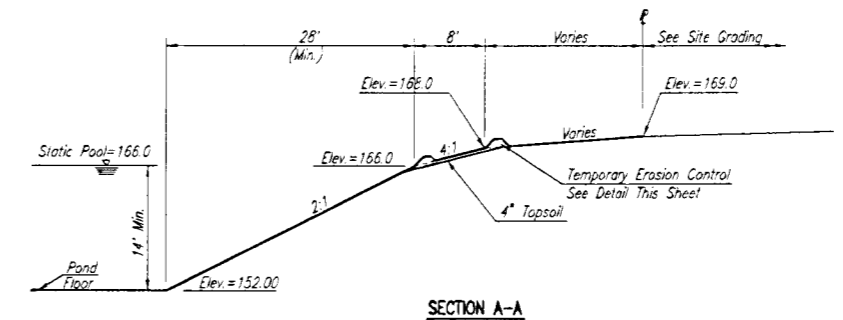
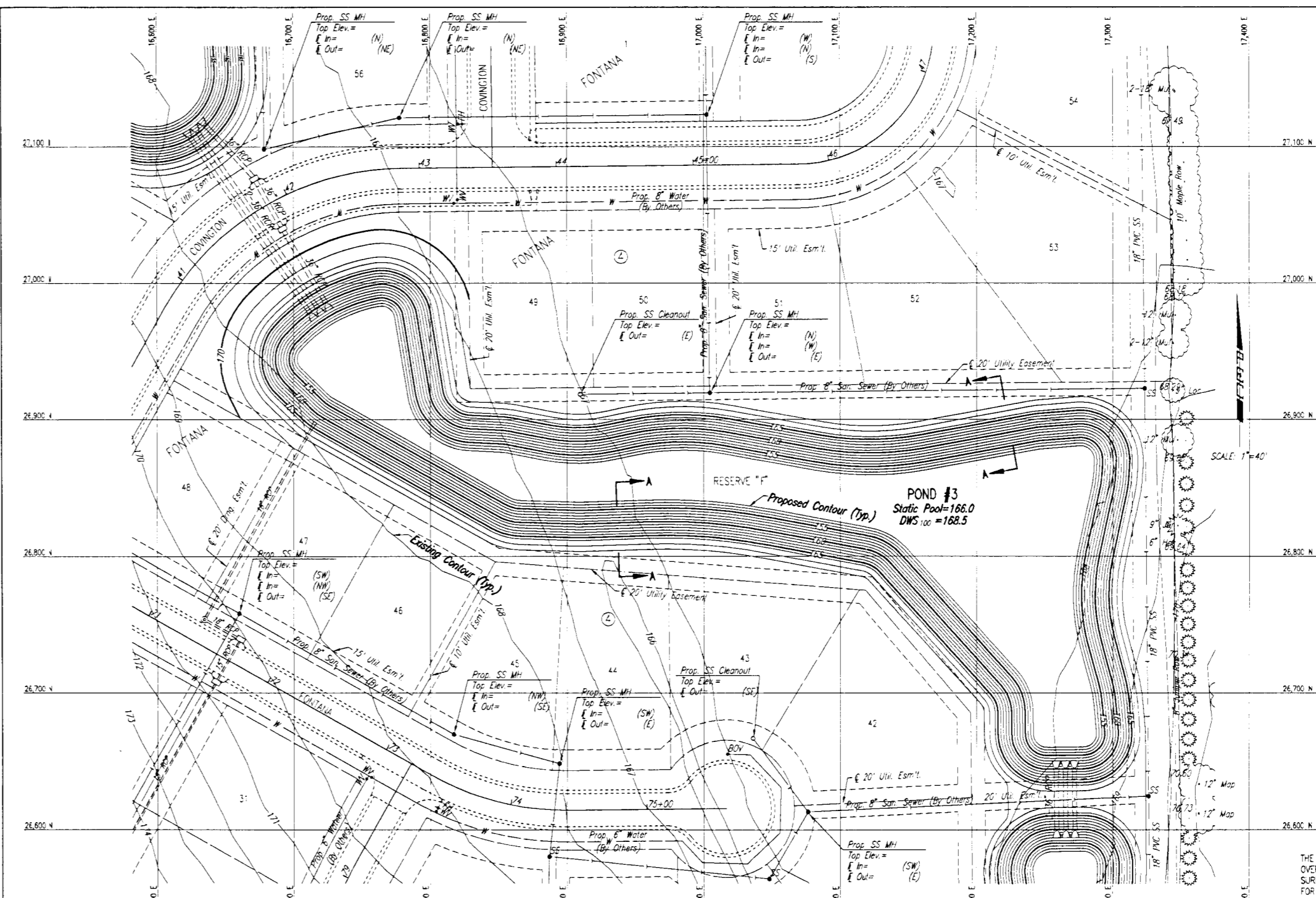
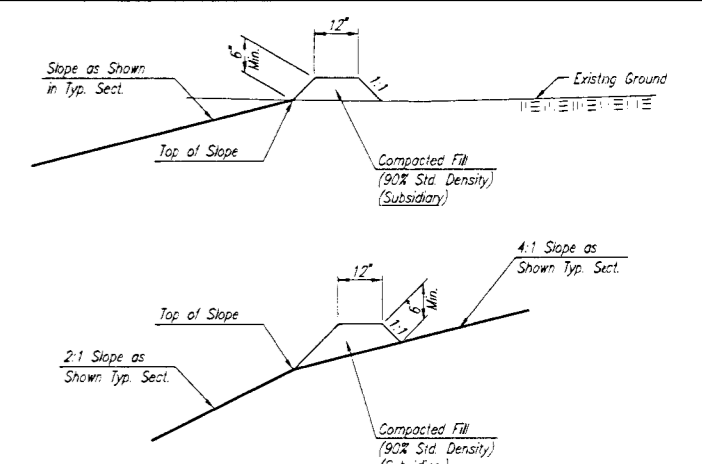


POND: BDB, OFFER: BDB, SCALE: 1"=40.00
 0:\2004\04485\001\FON03 03-09-2005 11:15:51 am

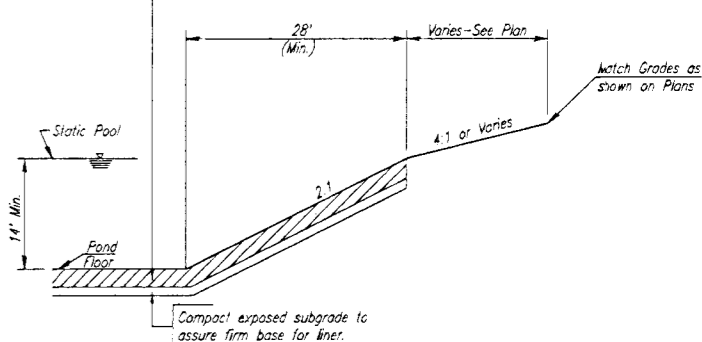


POND GRADING NOTES
 CONTRACTOR SHALL PERFORM GRADING AS SHOWN BY CONTOURS AND SPOT ELEVATIONS ON THIS SHEET. EARTHWORK VOLUMES FOR THIS GRADING HAVE BEEN INCLUDED IN THE BID ITEM "UNCLASSIFIED EXCAVATION".
 HORIZONTAL CONTROL FOR POND LAYOUT MAY BE SCALED FROM THIS DRAWING. SEE SHEET NO. 3 FOR ADDITIONAL CONTROL POINT INFORMATION.
 ALL EXCESS MATERIAL EXCAVATED AS A RESULT OF THIS GRADING SHALL REMAIN ON-SITE FOR USE IN SITE GRADING.



TEMPORARY EROSION CONTROL DETAIL FOR SLOPE PROTECTION
 THE ENGINEER MAY DETERMINE THAT THE HEIGHT OF BERM SHOULD BE INCREASED OVER THAT SHOWN IF DRAINAGE CONDITIONS ARE PRODUCING SLOPE EROSION.
 TEMPORARY EROSION CONTROL BERMS SHALL BE CONSTRUCTED AT LOCATIONS SHOWN ON THE PLANS OR AS DIRECTED BY THE ENGINEER.
 ALL AREAS WHERE FLOW IS CONCENTRATED SHALL BE PROTECTED BY SILTATION BARRIERS PRIOR TO DISCHARGING INTO ANY DITCH, STORM SEWER, OR WATERCOURSE, AS APPROVED BY THE ENGINEER.
 MEASUREMENT AND PAYMENT: THIS WORK SHALL NOT BE PAID FOR DIRECTLY BUT SHALL BE CONSIDERED SUBSIDIARY TO "UNCLASSIFIED EXCAVATION".

1. Construct 12 inches clay liner.
2. On-site high plasticity clay may be used.
3. Construct liner in two 6-inch lifts.
4. Compact to 95% of Standard Proctor Density (ASTM D-698).
5. Control moisture within minus 3 to plus 3% of optimum moisture content.



CLAY LINER CONSTRUCTION PROCEDURE FOR POND SEALING

POND SEALING NOTES:

THE POND AREAS BELOW STATIC POOL ELEVATION SHALL BE OVEREXCAVATED TO A DEPTH OF ONE FOOT BELOW THE FINAL POND SURFACE. THE OVEREXCAVATED MATERIAL SHALL BE STOCKPILED FOR RE-USE, UTILIZED IN PROJECT EMBANKMENTS, OR WASTED ON SITE. BACKFILL OVEREXCAVATED AREA WITH PROJECT AREA CLAY MATERIAL AND COMPACT TO TYPE B (MR-2) IN MAXIMUM 6-INCH LIFTS TO PROVIDE AN IMPERVIOUS SURFACE. NO SHALE PERMITTED IN THIS ZONE.
 POND SEALING, AS DESCRIBED HEREIN, SHALL BE MEASURED AND PAID FOR BY THE LUMP SUM. THE LUMP SUM BID FOR "POND SEALING" SHALL BE CONSIDERED FULL COMPENSATION FOR ALL OVEREXCAVATION, STOCKPILING, DOUBLE HANDLING OF EARTHWORK (IF NECESSARY), COMPACTING, WATER CORRECTION OF LEAKAGE AS DIRECTED BY THE ENGINEER, AND FOR ALL TOOLS, LABOR, EQUIPMENT AND INCIDENTALS NECESSARY TO COMPLETE THE WORK.

No.	Revised	By	Date
FORTANA ADDITION-PHASE 1 STORM WATER DRAIN NO. 236 POND NO. 3 GRADING PLAN JAMES L. ARNOUER, P.E. - ACTING CITY ENGINEER CITY OF WICHITA PROJECT NO. 468-83883 Professional Engineering Consultants, P.A. 303 S. TOPICKA • WICHITA, KANSAS 67202 316-262-2691 • FAX 316-262-3000			
Designed by	BDB, BLS	Job No.	35-04485-001
Drawn by	BJS	Date	SEPTEMBER 2004
		Sheet	10 of 11