

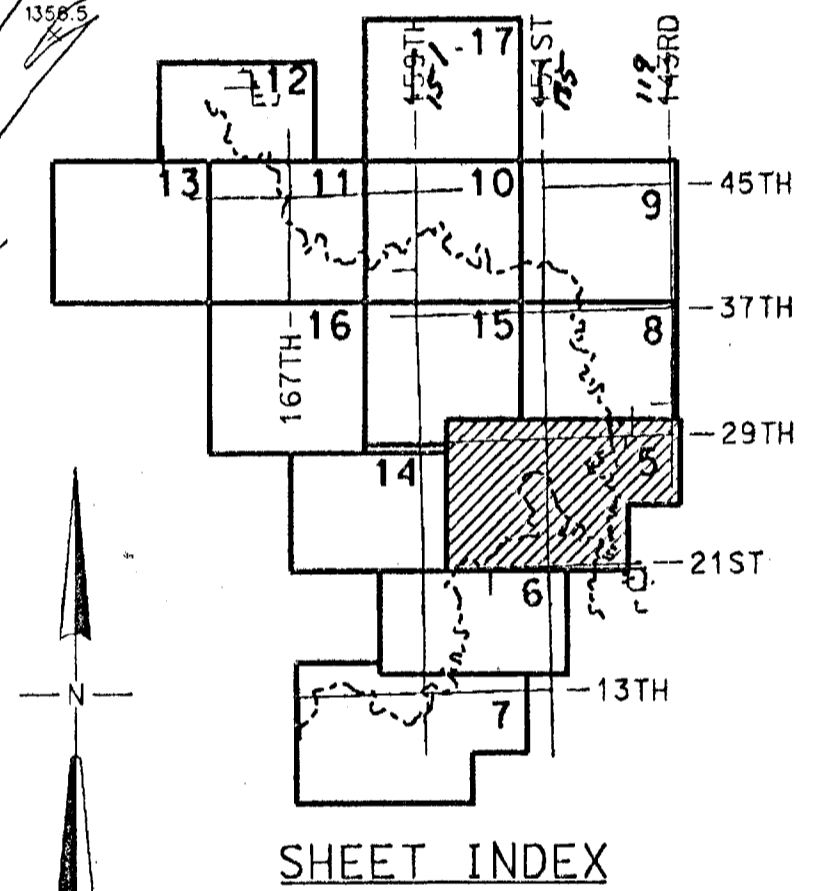
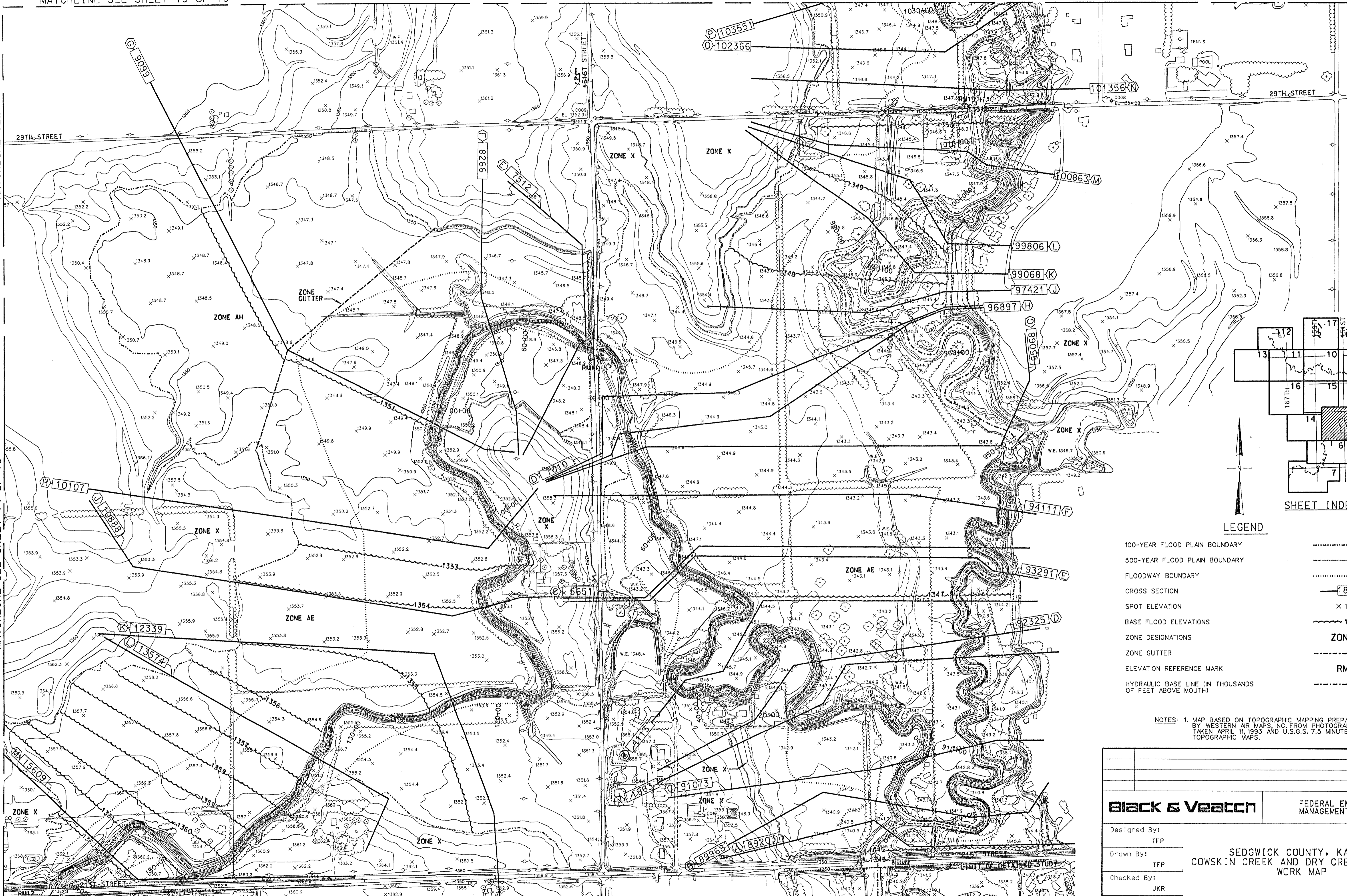
MATCHLINE SEE SHEET 15 OF 19

MATCHLINE SEE SHEET 8 OF 19

MATCHLINE SEE SHEET 15 OF 19

MATCHLINE SEE SHEET 14 OF 19

MATCHLINE SEE SHEET 6 OF 19



LEGEND

- 100-YEAR FLOOD PLAN BOUNDARY
- 500-YEAR FLOOD PLAN BOUNDARY
- FLOODWAY BOUNDARY
- CROSS SECTION
- SPOT ELEVATION
- BASE FLOOD ELEVATIONS
- ZONE DESIGNATIONS
- ZONE GUTTER
- ELEVATION REFERENCE MARK
- HYDRAULIC BASE LINE (IN THOUSANDS OF FEET ABOVE MOUTH)

NOTES: 1. MAP BASED ON TOPOGRAPHIC MAPPING PREPARED BY WESTERN AIR MAPS, INC. FROM PHOTOGRAPHS TAKEN APRIL 11, 1993 AND U.S.G.S. 7.5 MINUTE TOPOGRAPHIC MAPS.

Black & Veatch		FEDERAL EMERGENCY MANAGEMENT AGENCY	
Designed By:	TFP	SEDGWICK COUNTY, KANSAS COWSKIN CREEK AND DRY CREEK (NORTH) WORK MAP	
Drawn By:	TFP		
Checked By:	JKR		
Submitted By:	JKR		
Date:	OCTOBER 1996	Design File:	S5.DGN
		Sheet:	5 of 19

SCALE: 1" = 300'