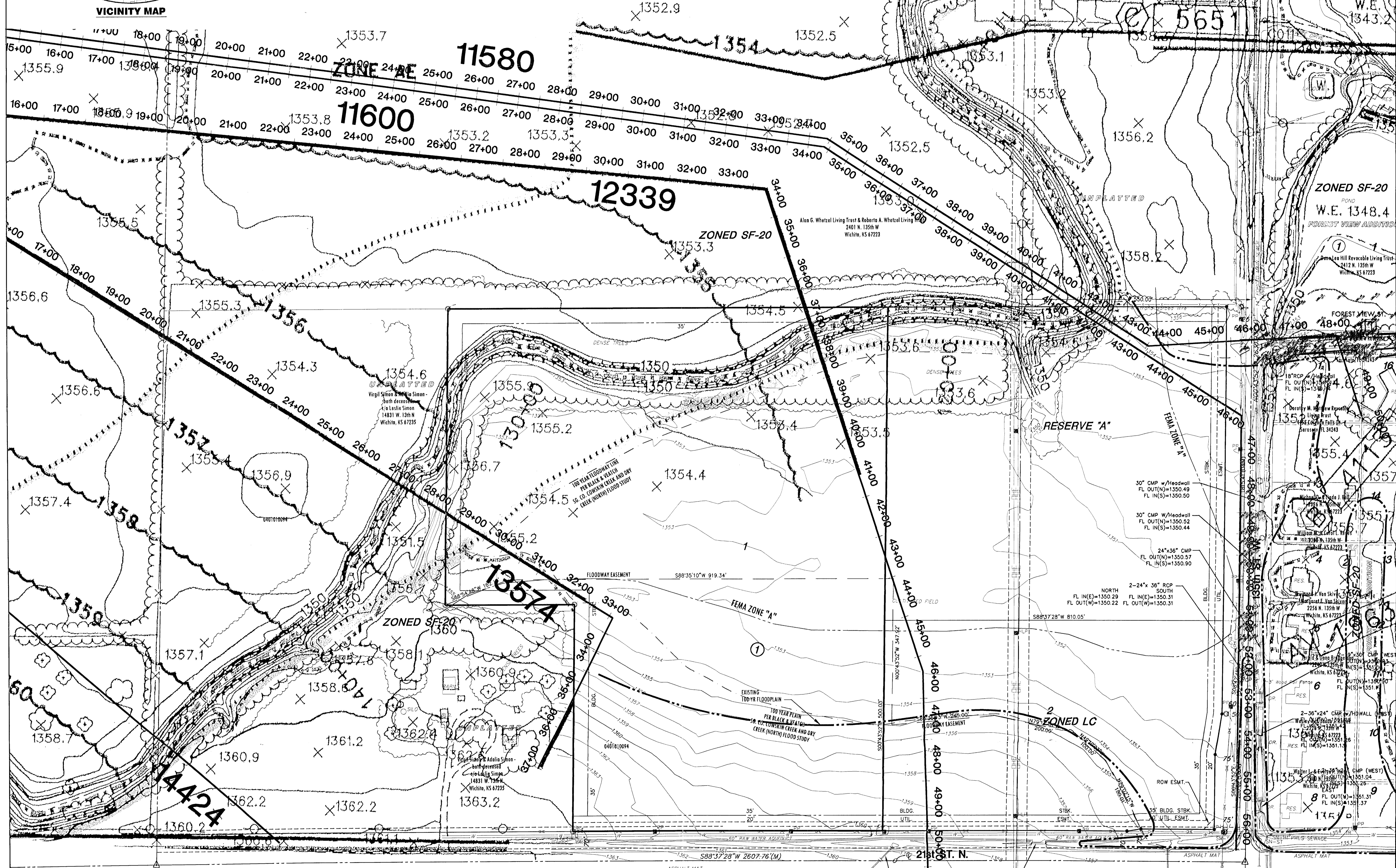


LEGEND

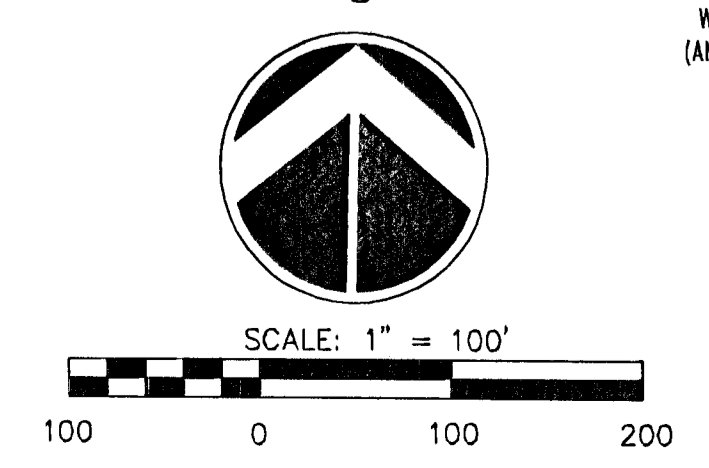
- - SIGN
- - GAS METER
- - STORM WATER MANHOLE
- - SANITARY SEWER MANHOLE
- - CONIFEROUS TREE & DIAMETER
- - DECIDUOUS TREE & DIAMETER
- - BUSH
- - EDGE OF TREES
- - FENCE
- - GATE
- - WALL
- - POWER POLE AND GUY ANCHOR
- - ELECTRIC BOX
- - POLE
- - FIRE HYDRANT
- - WATER VALVE
- - WATER METER
- - TELEPHONE RISER
- - STORM SEWER PIPE
- - WATER LINE
- - SANITARY SEWER LINE
- - GAS LINE
- - TELEPHONE LINE
- - UNDERGROUND ELECTRIC LINE
- - OVERHEAD TELEPHONE
- - OVERHEAD ELECTRIC
- - UNDERGROUND FIBER OPTIC CABLE
- - BENCHMARK
- - SECTION CORNER
- - 5/8" REBAR/ALICE
- - CLS #39 SET
- - PROPERTY CORNER FOUND



EXISTING CONDITIONS-DRY CREEK NORTHWEST YMCA ADDITION

REVISED: 6/10/04

OWNER / DEVELOPER: Young Men's Christian Association of Wichita 3330 N. Woodlawn, Wichita, KS. 67220 (316) 219-9622 ex220 **Submittal date: May 2004**



MKEC
ENGINEERING
CONSULTANTS
411 N. WEBB ROAD
WICHITA, KS. 67206
316-684-9800

UNPLATTED
Wichita United Methodist
1940 E. Boston #140
Wichita, KS 67207

15" RCP
FL OUT(N)=1357.38
FL IN(S)=1358.57

28"x22" CMP
FL OUT(N)=1355.70
FL IN(S)=1355.98

29"x42" RCP
FL OUT(N)=1357.38
FL IN(S)=1358.57

28"x22" CMP
FL OUT(N)=1355.73
FL IN(S)=1355.98

29"x42" CMP
FL IN(E)=1354.71
FL OUT(N)=1354.70

2400 N. Woodlawn
Wichita, KS 67223

28"x22" CMP
FL OUT(N)=1352.20
FL IN(S)=1352.81

2121 N. 135th W
Wichita, KS 67225

1-36" CMP (EAST)
FL OUT(N)=1351.64
FL IN(S)=1352.02

2-24" RCP (WEST)
FL OUT(N)=1351.73
FL IN(S)=1352.15

2-36" CMP (WEST)
FL OUT(N)=1351.04
FL IN(S)=1351.26

8" FL OUT(N)=1351.31
FL IN(S)=1351.37