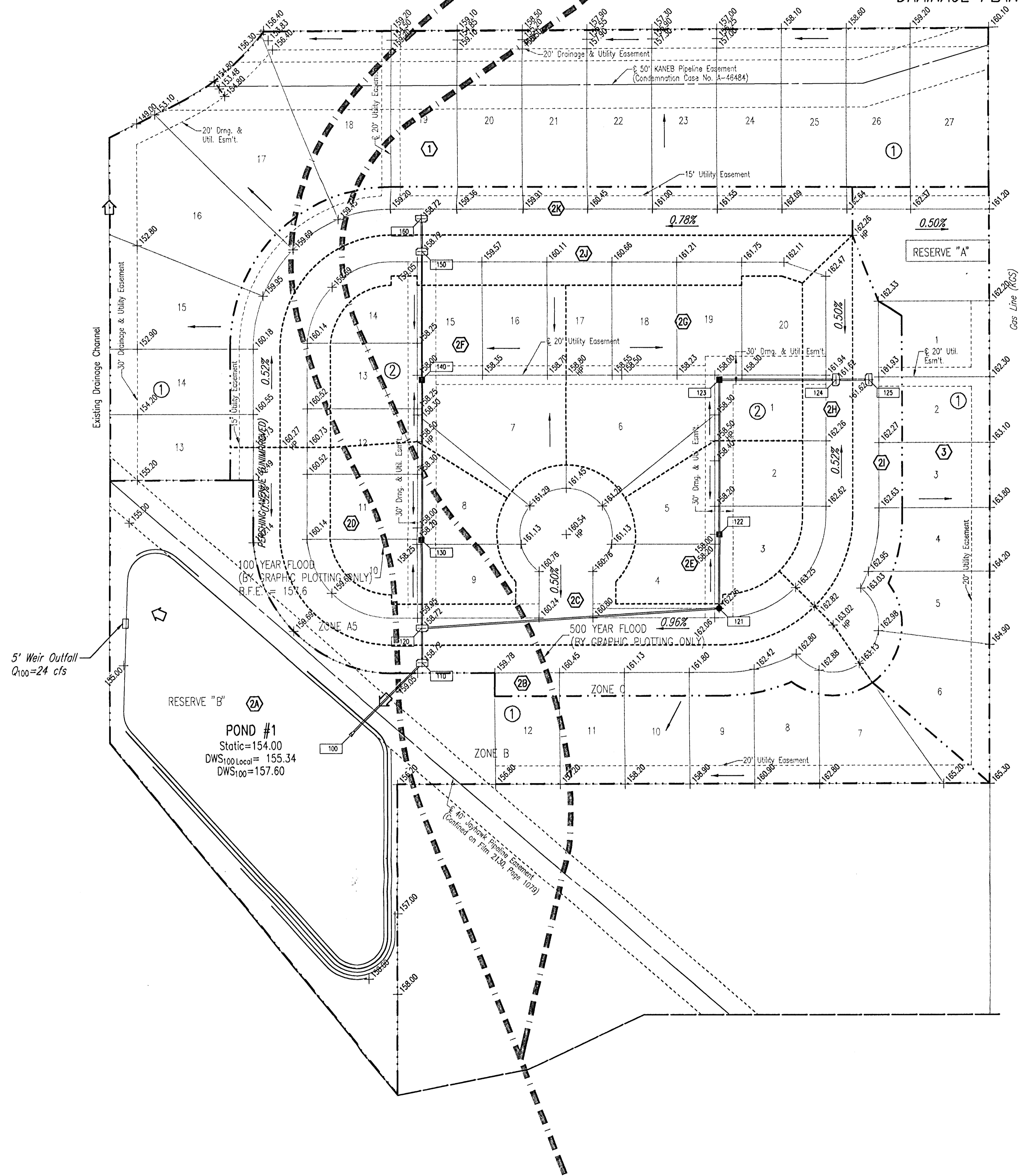


CREEKSIDE AT PEMBROOK

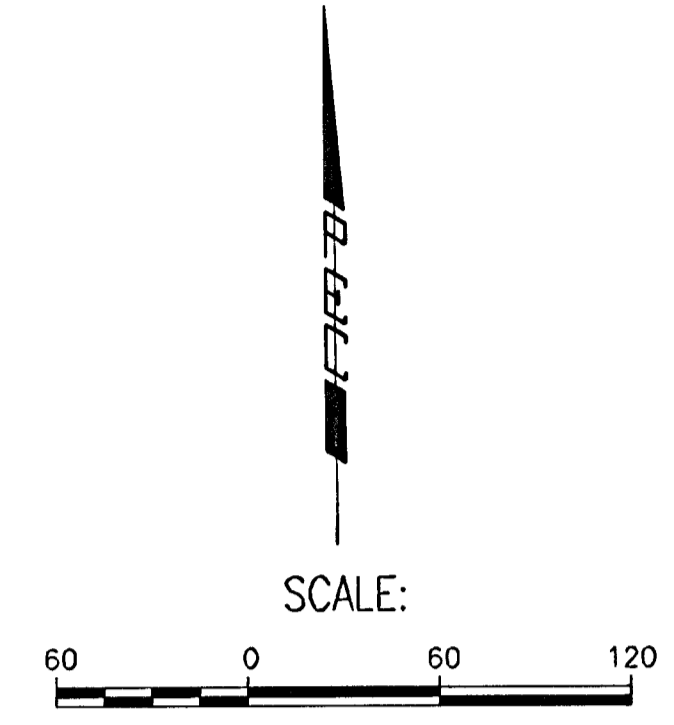
AN ADDITION TO WICHITA, SEDGWICK COUNTY, KANSAS

DRAINAGE PLAN



N.E. Cor. Sec. 2, T27S, R1E
 Set 3/4" Iron Pipe w/ P.E.C. Cap over
 1/2" Iron Pipe in Thimble

NOTE:
 FLOOD ZONE INFORMATION IS AS PER COMMUNITY
 PANEL NUMBER 200328 015B
 EFFECTIVE DATE: MAY 15, 1986



- LEGEND**
- 3A BASIN IDENTIFIER
 - MINOR BASIN BOUNDARY
 - - - MAJOR BASIN BOUNDARY
 - MAJOR STORM WATER OVERFLOW (Q100)
 - MINOR STORM WATER FLOW (Q2)
 - 300 NODE IDENTIFIER
 - STORM SEWER AND AREA INLET
 - STORM SEWER AND MANHOLE
 - STORM SEWER AND CURB INLET
 - +157.00 SPOT ELEVATION
 - +157.00 HP HIGH POINT ELEVATION

SEE SUPPORTING CALCULATIONS FOR HYDROLOGY

BENCHMARKS:

C.O.W. BRASS DISK ON THE SOUTHEAST CORNER OF HUB GUARD 100' SOUTH OF NORWOOD ON THE EAST SIDE OF OLIVER. ELEV. 161.44

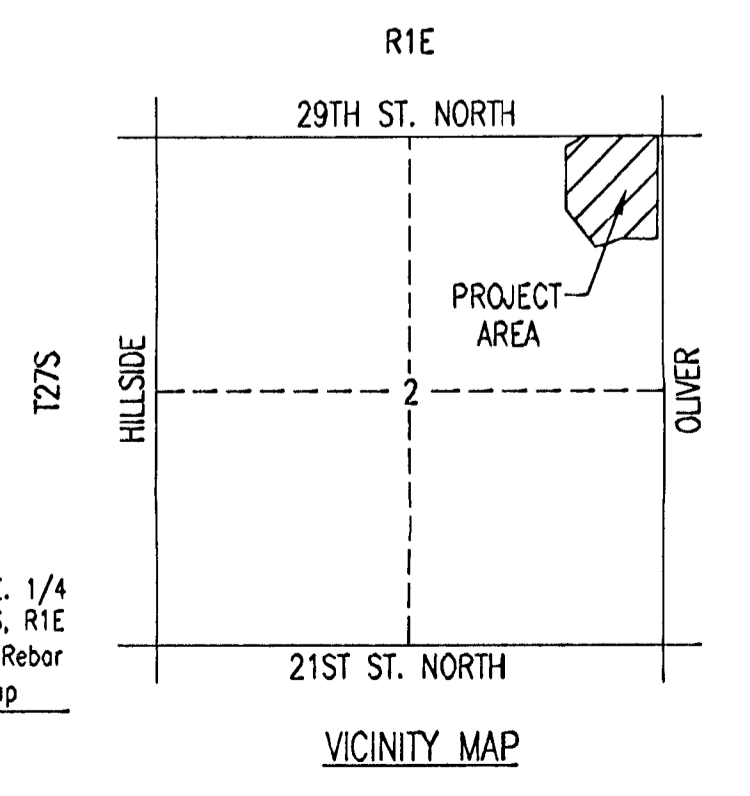
C.O.W. BRASS DISK ON THE NORTHEAST CORNER OF RCB 300' SOUTH OF NORWOOD. ELEV. 160.80

CHISELED "d" CENTERLINE OF CURB INLET WEST SIDE OF OLIVER APPROXIMATELY 100' NORTH OF 29TH STREET NORTH. ELEV. 158.89

MINIMUM PAD

BLOCK 1, LOTS 1-27 160.60

BLOCK 2, LOTS 1-20 160.60



S.E. Cor. N.E. 1/4
 Sec. 2, T27S, R1E
 Found 1/2" Rebar
 w/ P.E.C. Cap