

FOUR-CORNER PLAN AVALON PARK 3RD

AN ADDITION TO WICHITA,
SEDGWICK COUNTY, KANSAS

OWNER: JEAN E. WOODARD REV. TRUST
UNPLATTED
ZONED: "RR"

K-96 HIGHWAY

SCALE: 1" = 100'

● = 1/2" REBAR W/PEC CAP UNLESS OTHERWISE NOTED

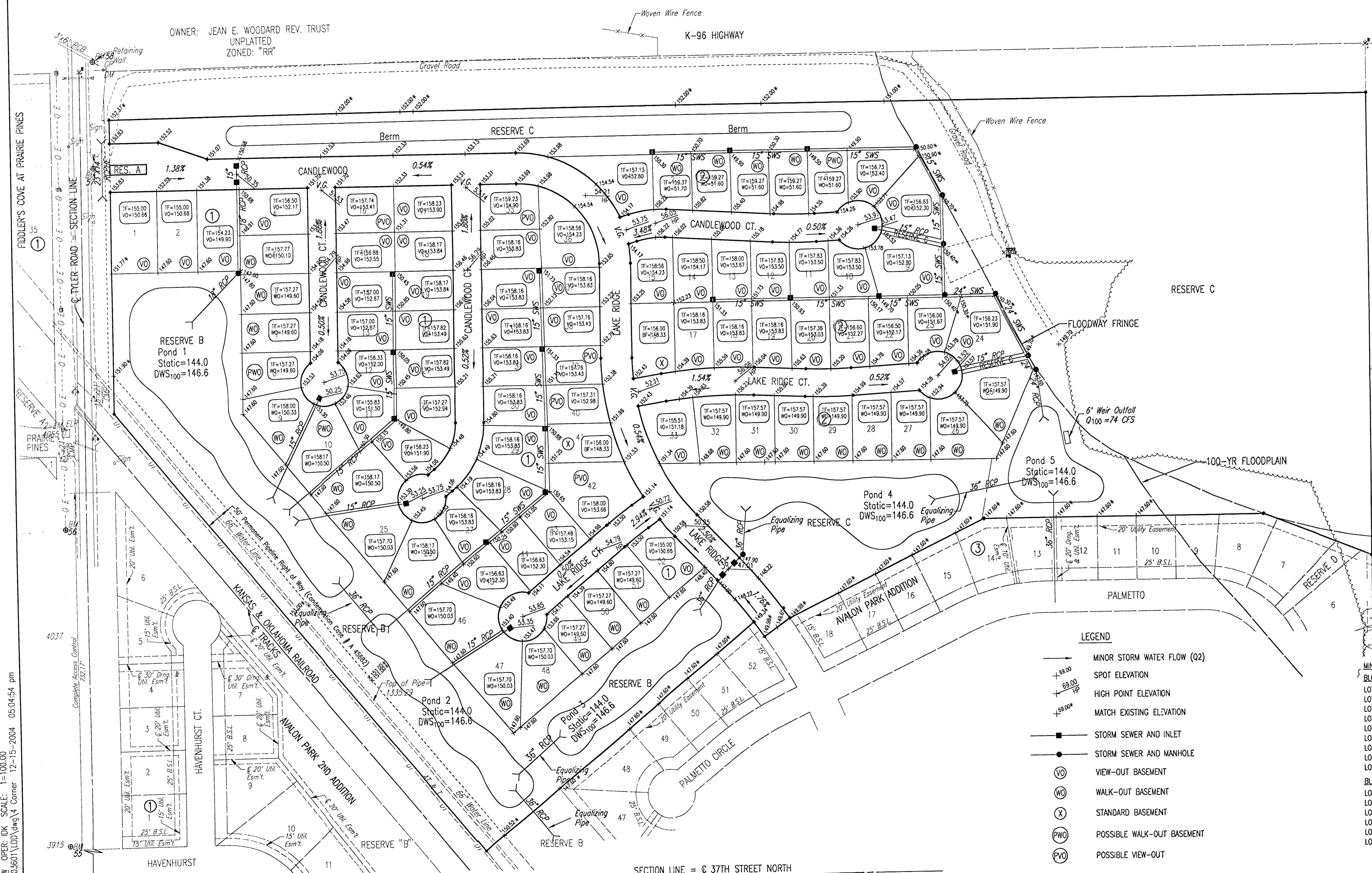
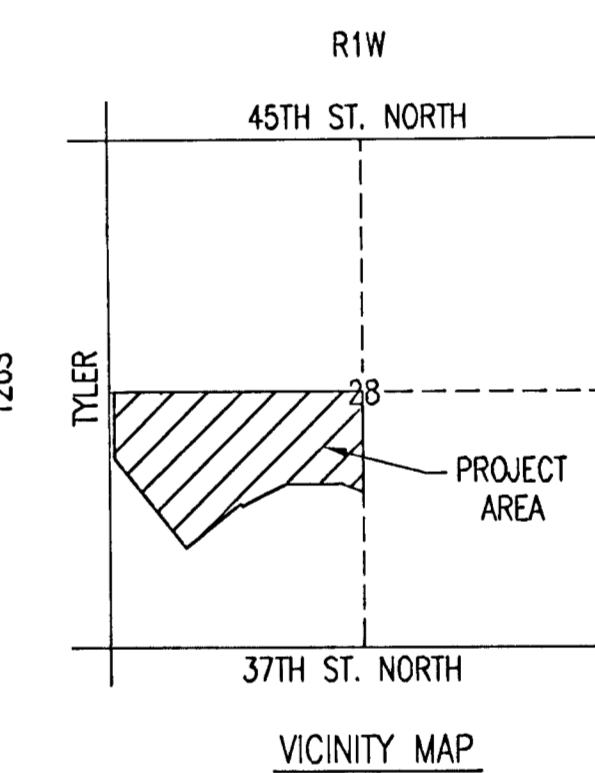
BENCHMARKS:

- BM #55 - R.R. Spike in E. face Power Pole W. side Tyler Rd. at House #3915
Elev.=1340.28 N.G.V.D.
Elev.=152.88 CITY DATUM
- BM #56 - R.R. Spike in E. face Power Pole W. side Tyler Rd. 2nd Pole S. of R.R. Tracks
Elev.=1339.89 N.G.V.D.
Elev.=152.58 CITY DATUM
- BM #57 - Chiseled "d" on S. end of RCP at entrance to "the edge" Paintball Adventures, E. side Tyler Rd. between R.R. Tracks and K96 Highway.
Elev.=1340.74 N.G.V.D.
Elev.=153.34 CITY DATUM
- BM #58 - Chiseled "d" on S. end concrete headwall, E. end RCB under Tyler Rd. at 1/2 mile line, S. of K96 Highway.
Elev.=1342.03 N.G.V.D.
Elev.=154.63 CITY DATUM

OWNER: HONGS EQUIPMENT LEASING, INC.
UNPLATTED
ZONED: "SF-20"

OWNER: COF, L.L.C.
UNPLATTED
ZONED: "SF-20"

OWNER: TICHE INVESTMENT CO. INC.
UNPLATTED
ZONED: "SF-20"



- LEGEND**
- MINOR STORM WATER FLOW (Q2)
 - ▲ SPOT ELEVATION
 - HIGH POINT ELEVATION
 - MATCH EXISTING ELEVATION
 - STORM SEWER AND INLET
 - STORM SEWER AND MANHOLE
 - VO VIEW-OUT BASEMENT
 - WO WALK-OUT BASEMENT
 - X STANDARD BASEMENT
 - PWO POSSIBLE WALK-OUT BASEMENT
 - PVO POSSIBLE VIEW-OUT

MINIMUM OPENINGS	ELEVATION (N.G.V.D.)	City Datum
BLOCK 1		
LOTS 1-10, 24-26, 46-52	1337.00	149.60
LOTS 11, 22-23	1338.70	151.30
LOTS 12-13, 20-21	1338.85	151.45
LOTS 14-19	1339.25	151.85
LOTS 27, 44-45	1339.00	151.60
LOTS 28, 42-43	1339.45	152.05
LOTS 29-30, 40-41	1339.65	152.25
LOTS 31-32, 38-39	1340.13	152.73
LOTS 33-35, 36-37	1340.53	153.13
BLOCK 2		
LOTS 1-2	1339.10	151.70
LOTS 3-7	1339.00	151.60
LOTS 8-10, 21-23	1338.80	151.40
LOTS 11-12, 19-20	1339.73	152.33
LOTS 13-18	1340.13	152.73
LOTS 24-33	1337.00	149.60

DSNR: SAW OPER: IDK SCALE: 1"=100.00
 G:\2003\0360\DD\dwg\4_Corner 12-15-2004 05:04:54 pm