

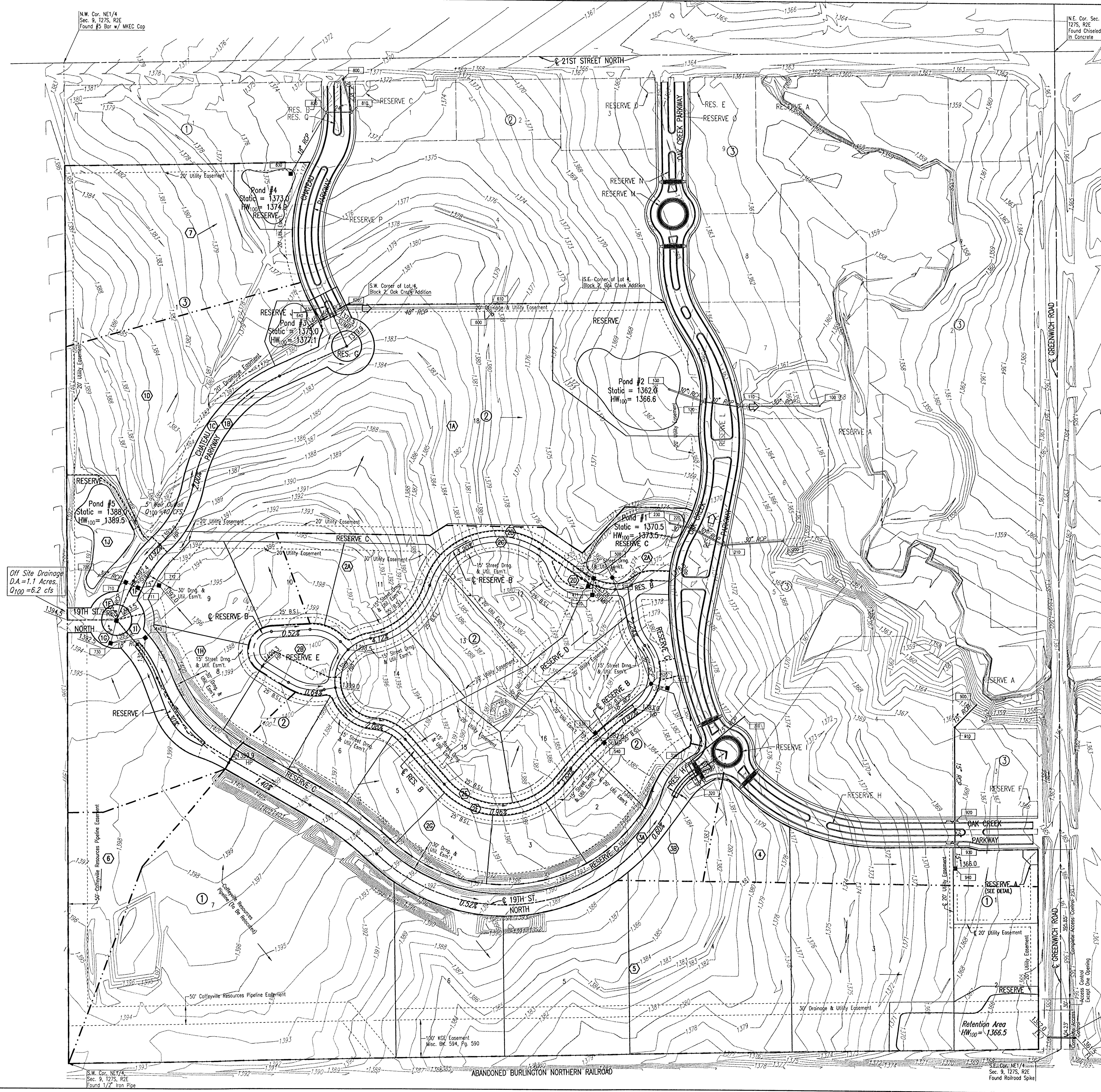
N.W. Cor. NE1/4
 Sec. 9, T27S, R2E
 Found #5 Bar w/ MKEC Cap

N.E. Cor. Sec. 9
 T27S, R2E
 Found Chiseled "4"
 in Concrete

OAK CREEK 2ND

AN ADDITION TO WICHITA, SEDGWICK COUNTY, KANSAS
 DRAINAGE PLAN

REVISED 4-28-2006

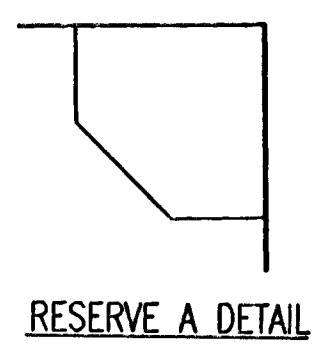


- BENCHMARKS:**
- BM #205 (Datum)
 CDW brass disc in NW corner of railroad signal base, W side of Greenwich Road, 1/2 mile S of 21st Street North.
 Elev. = 1370.59 N.G.V.D.
 183.19 City Datum
 - BM #206
 1" Post 5' W of N gate post to field entrance, W side of Greenwich Road, 700' ± N of railroad tracks and 500' ± S of RCB culvert.
 Elev. = 1365.87 N.G.V.D.
 178.47 City Datum
 - BM #207
 Chiseled "4" on top of concrete headwall on NW corner of RCB under Greenwich Road, 1100' ± S of 21st Street North.
 Elev. = 1360.05 N.G.V.D.
 172.65 City Datum
 - BM #208
 Railroad spike in W face of 20' Elm on E right of way line of Greenwich Road 800' ± S of 21st Street North.
 Elev. = 1367.70 N.G.V.D.
 180.30 City Datum
 - BM #209
 Chiseled "4" on NW corner of traffic signal base, at SW corner of Greenwich Road & 21st Street North.
 Elev. = 1363.54 N.G.V.D.
 176.14 City Datum
 - BM #215
 Chiseled "4" in top center curb inlet 600' W of Greenwich Road on S side of 21st Street North.
 Elev. = 1363.25 N.G.V.D.
 175.85 City Datum
 - BM #216
 Chiseled "4" on S end of curb & gutter at E of Madison, Target entrance on N side of 21st Street North 1400' ± W of Greenwich Road.
 Elev. = 1364.55 N.G.V.D.
 177.15 City Datum

SCALE: 1" = 100'

LEGEND

- 3A BASIN IDENTIFIER
 - MINOR BASIN BOUNDARY
 - MAJOR BASIN BOUNDARY
 - EMERGENCY STORM WATER FLOW
 - STORM WATER FLOW
 - 300 NODE IDENTIFIER
 - STORM SEWER AND INLET
 - STORM SEWER AND MANHOLE
- SEE SUPPORTING CALCULATIONS FOR HYDROLOGY

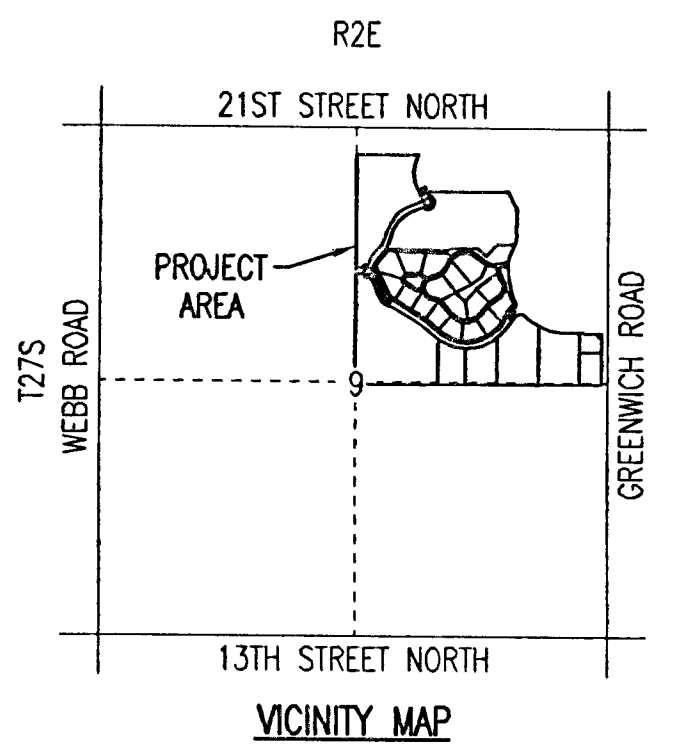


MINIMUM PADS	
BLOCK 1:	
LOTS 1-3	1369.5
BLOCK 2:	
LOT 1	1383.2
LOT 9	1394.6
LOTS 12 & 17	1380.5
LOT 18	1369.6
BLOCK 3:	
LOT 1	1380.1

Off Site Drainage
 D.A. = 1.1 Acres
 Q₁₀₀ = 6.2 cfs

Existing 36" CMP
 Under Greenwich

Retention Area
 HW₁₀₀ = 1366.5



Sheet 05-01-2006, 9:12:12 AM by BDM
 Plot Date: 1:00 PM 05-01-2006 8:17:40 AM by BDM
 Project: 05-01-2006-05-01-2006-05-01-2006