

OAK CREEK 2ND

AN ADDITION TO WICHITA, SEDGWICK COUNTY, KANSAS
FOUR-CORNER PLAN

REVISED 4-28-2006

SCALE: 1"=100'

BENCHMARKS:

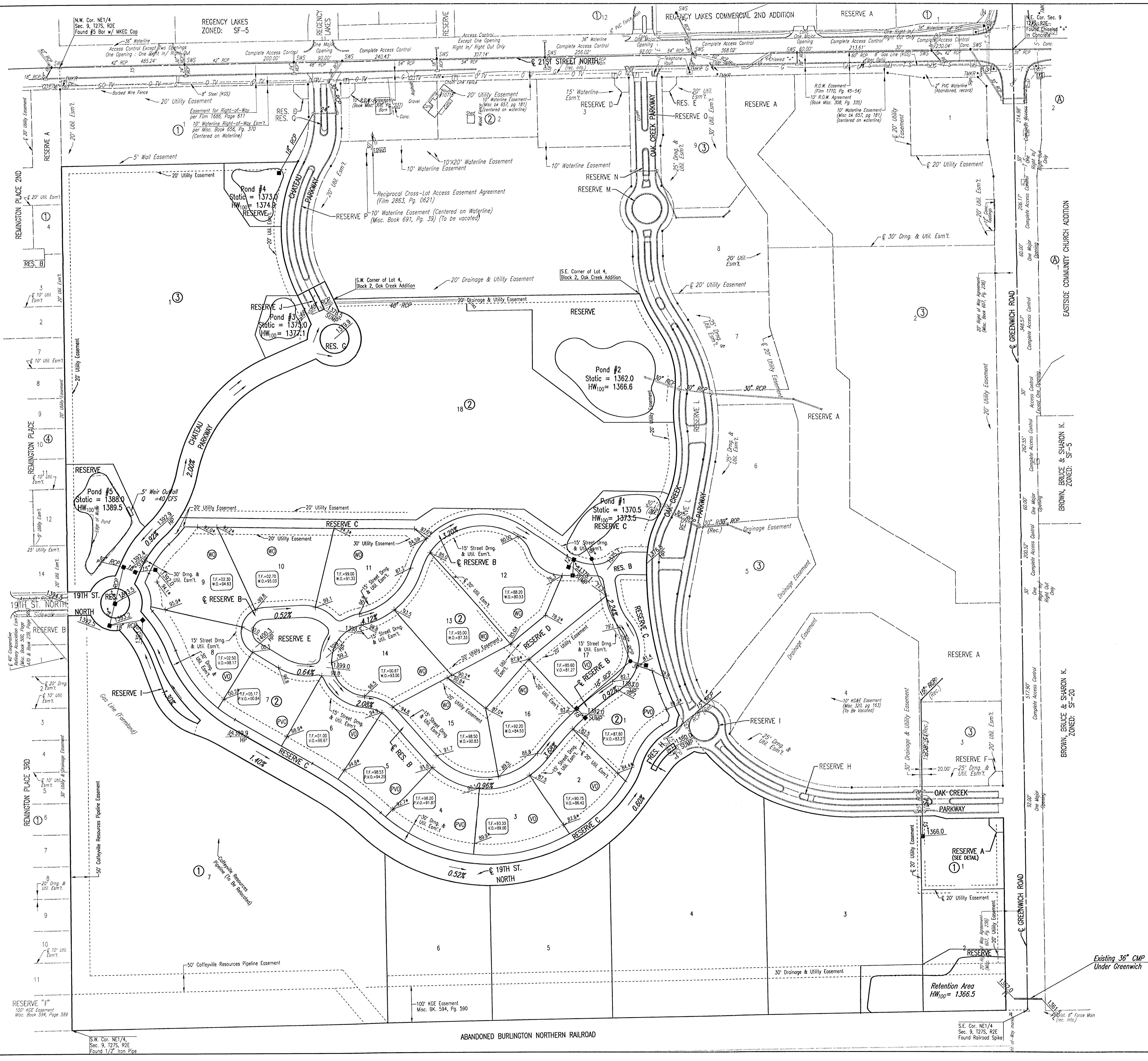
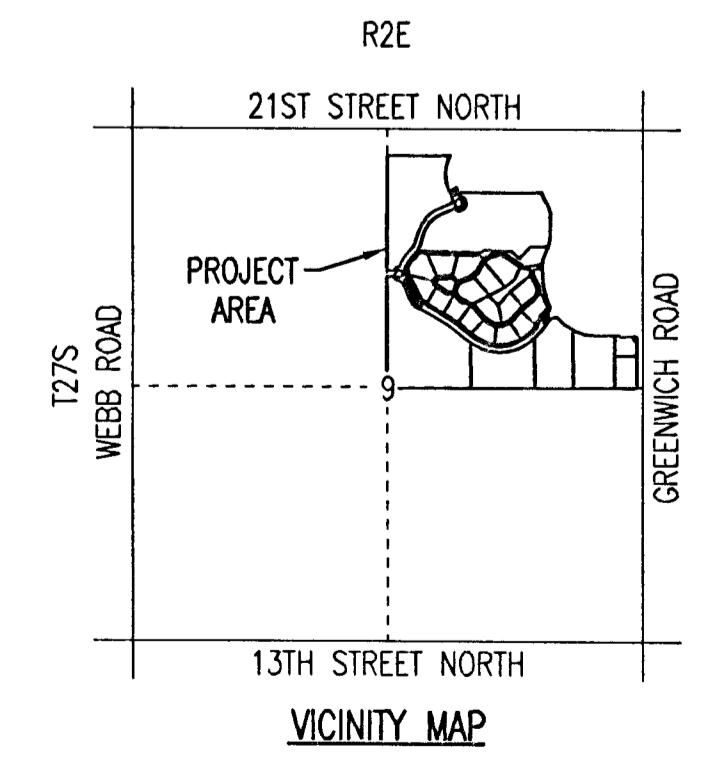
- BM #205 (Datum)
COW brass disc in NW corner of railroad signal base, W side of
Greenwich Road, 1/2 mile S of 21st Street North.
Elev. = 1370.59 N.G.V.D.
- BM #206
"I" Post 5' W of N gate post to field entrance, W side of
Greenwich Road, 700' ± N of railroad tracks and 500' ± S of
RCB culvert.
Elev. = 1365.87 N.G.V.D.
- BM #207
Chiseled "d" on top of concrete headwall on NW corner of RCB
under Greenwich Road, 1100' ± S of 21st Street North.
Elev. = 1360.05 N.G.V.D.
- BM #208
Railroad spike in W face of 20' Esm on E right of way line of
Greenwich Road 800' ± S of 21st Street North.
Elev. = 1367.70 N.G.V.D.
- BM #209
Chiseled "d" on NW corner of traffic signal base, at SW corner
of Greenwich Road & 21st Street North.
Elev. = 1363.54 N.G.V.D.
- BM #215
Chiseled "*" in top center curb inlet 600' W of Greenwich Road
on S side of 21st Street North.
Elev. = 1363.265 N.G.V.D.
- BM #216
Chiseled "d" on S end of curb & gutter at E of Median,
Target entrance on N side of 21st Street North 1400' ± W of
Greenwich Road.
Elev. = 1364.55 N.G.V.D.

LEGEND

- SPOT ELEVATION
 - HIGH POINT ELEVATION
 - MATCH EXISTING ELEVATION
 - STORM SEWER AND INLET
 - STORM SEWER AND MANHOLE
 - VIEW-OUT BASEMENT
 - WALK-OUT BASEMENT
 - POSSIBLE VIEW-OUT
- ADD 1300 TO ELEVATIONS FOR CITY DATUM.

MINIMUM PADS

BLOCK 1:	LOTS 1-3	1369.5
BLOCK 2:	LOT 1	1383.2
	LOT 9	1394.6
	LOTS 12 & 17	1380.5
	LOT 18	1369.6
BLOCK 3:	LOT 1	1380.1



BROWN, BRUCE & SHARON K.
ZONED: SF-20

S.E. Cor. NE1/4
Sec. 9, T27S, R2E
Found Railroad Spike

S.W. Cor. NE1/4
Sec. 9, T27S, R2E
Found 1/2" Iron Pipe

RESERVE "I"
10' W/E Easement
Misc. Book 594, Page 589

RESERVE "I"
10' W/E Easement
Misc. Book 594, Page 589

RESERVE "I"
10' W/E Easement
Misc. Book 594, Page 589

RESERVE "I"
10' W/E Easement
Misc. Book 594, Page 589

RESERVE "I"
10' W/E Easement
Misc. Book 594, Page 589

N.W. Cor. NE1/4
Sec. 9, T27S, R2E
Found 5/8" MKEC Cap

N.W. Cor. NE1/4
Sec. 9, T27S, R2E
Found 5/8" MKEC Cap