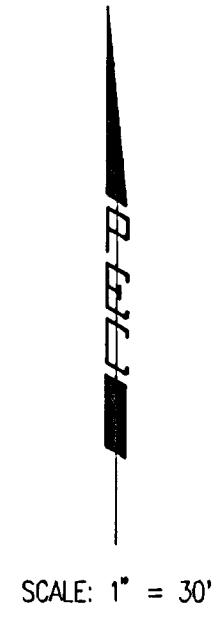


# HOME BANK AND TRUST

## AN ADDITION TO WICHITA, SEDGWICK COUNTY, KANSAS

### DRAINAGE PLAN



SCALE: 1" = 30'

• = 1/2" REBAR W/PEC CAP UNLESS OTHERWISE NOTED

PROJECT BENCHMARK:  
CHISELED 18" WEST CURB ISLAND AT THE NORTHEAST CORNER OF  
GREENWICH ROAD AND 13TH STREET NORTH.  
ELEVATION = 1388.15 N.G.V.D.  
= 198.75 CITY DATUM

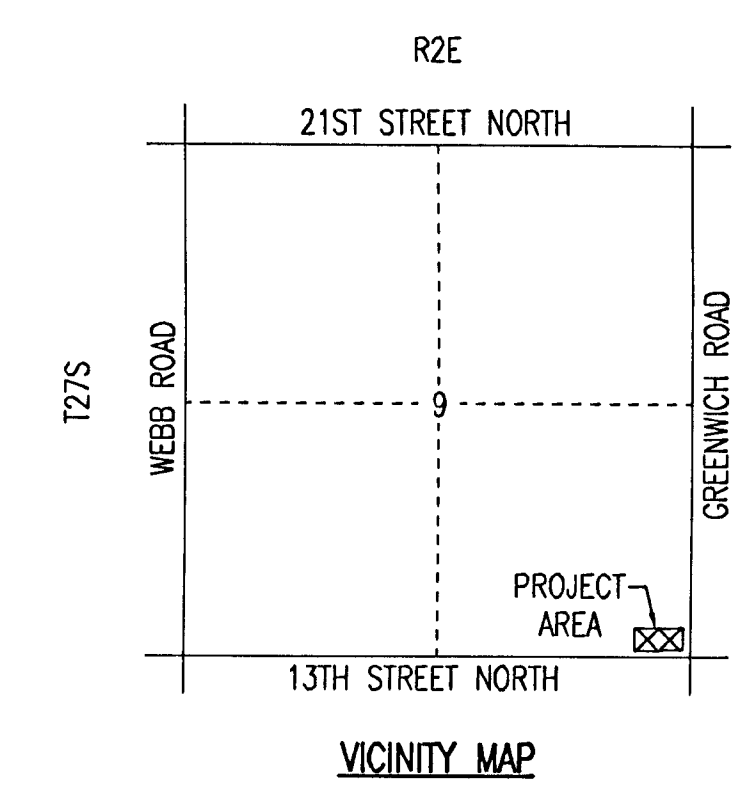
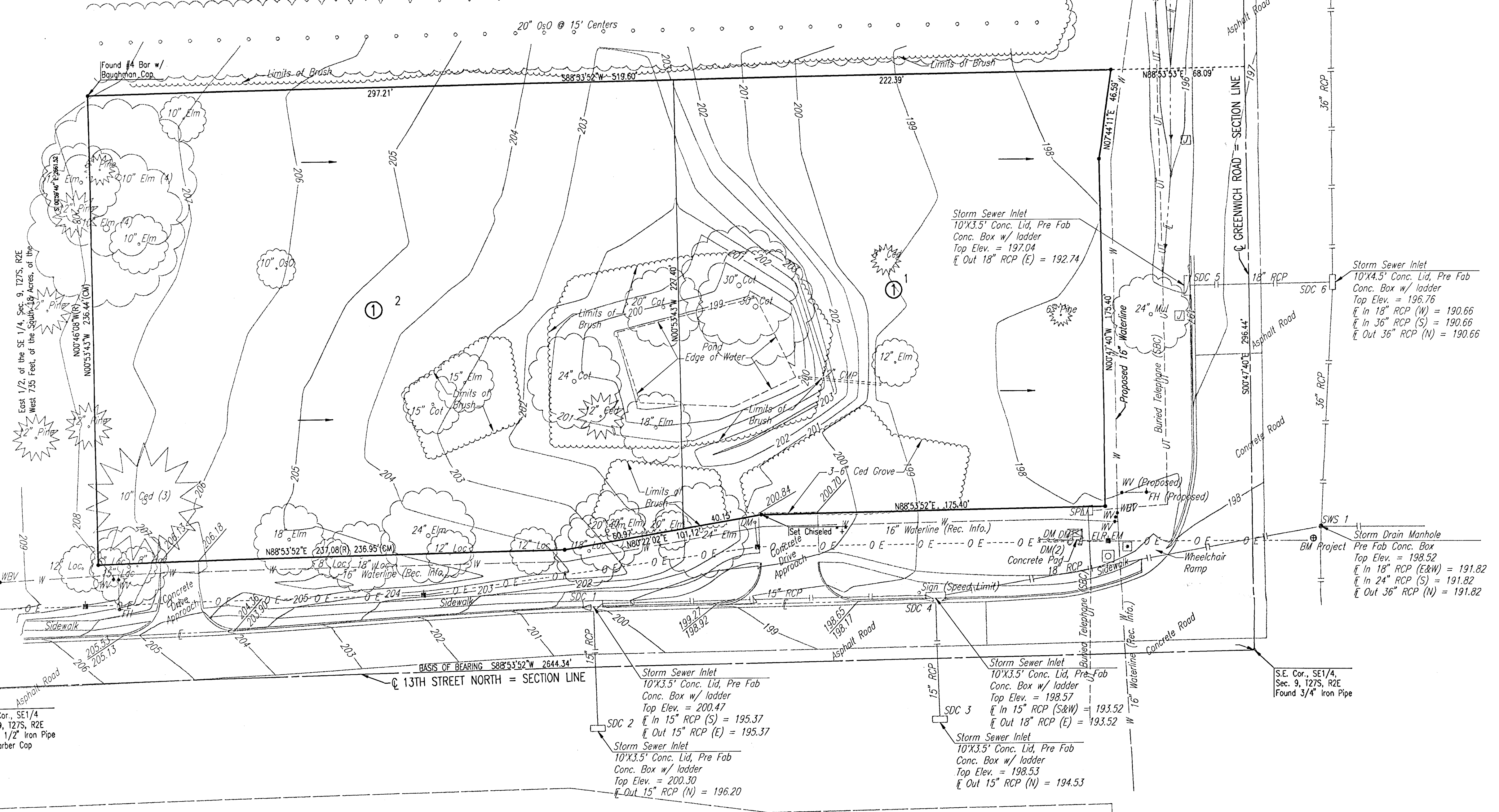
#### LEGEND

→ STORM WATER FLOW

SEE SUPPORTING CALCULATIONS FOR HYDROLOGY

North 4 Acres, of the South 18 Acres, of the  
East 1/2, of the SE 1/4, Sec. 9, T27S, R2E

N.E. Cor., SE1/4  
Sec. 9, T27S, R2E  
Found Railroad Spike  
in E of Asphalt



DSMR: BLB OPER: BLB SCALE: 1"=30.00  
C:\2004\04640\DD\dwg\Drainage 02-23-2005 11:32:29 am