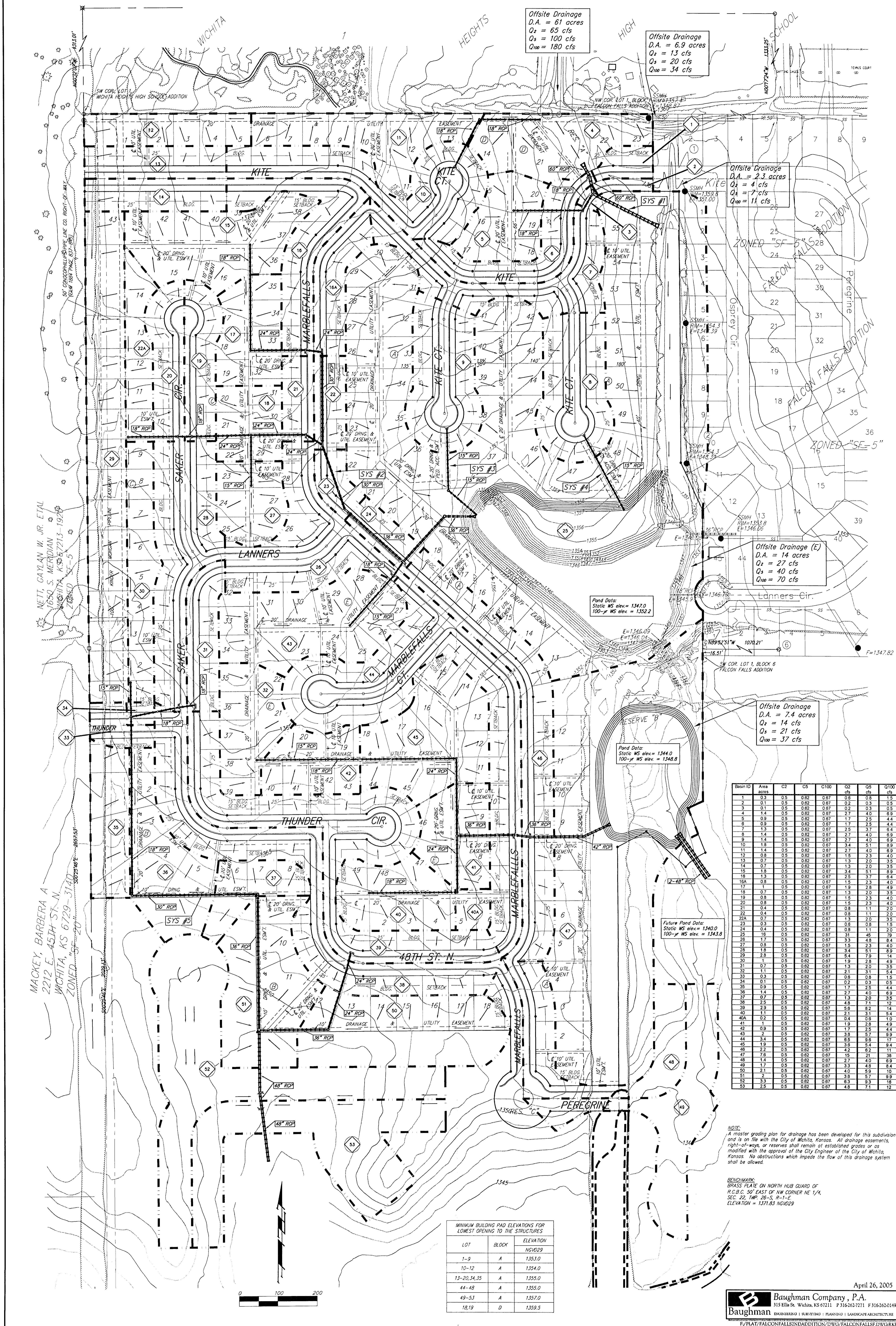


FALCON FALLS 2ND ADDITION

WICHITA, SEDGWICK COUNTY, KANSAS



Offsite Drainage
D.A. = 61 acres
Q_s = 65 cfs
Q₀ = 100 cfs
Q₁₀₀ = 180 cfs

Offsite Drainage
D.A. = 6.9 acres
Q_s = 13 cfs
Q₀ = 20 cfs
Q₁₀₀ = 34 cfs

Offsite Drainage
D.A. = 2.3 acres
Q_s = 4 cfs
Q₀ = 7 cfs
Q₁₀₀ = 11 cfs

Offsite Drainage (E)
D.A. = 14 acres
Q_s = 27 cfs
Q₀ = 40 cfs
Q₁₀₀ = 70 cfs

Offsite Drainage
D.A. = 7.4 acres
Q_s = 14 cfs
Q₀ = 21 cfs
Q₁₀₀ = 37 cfs

Pond Data:
Static WS elev. = 1347.0
100-yr WS elev. = 1352.2

Pond Data:
Static WS elev. = 1344.0
100-yr WS elev. = 1348.8

Basin ID	Area	Q2	Q5	Q100	Q2	Q5	Q100
1	0.3	0.5	0.8	0.8	0.9	0.9	0.9
2	0.1	0.5	0.8	0.8	0.9	0.9	0.9
3	0.1	0.5	0.8	0.8	0.9	0.9	0.9
4	1.4	0.5	0.8	0.8	2.7	4.0	6.9
5	0.9	0.5	0.8	0.8	1.7	2.5	4.4
6	0.9	0.5	0.8	0.8	1.7	2.5	4.4
7	1.3	0.5	0.8	0.8	2.4	3.7	6.2
8	1.4	0.5	0.8	0.8	2.7	4.0	6.9
9	1.8	0.5	0.8	0.8	3.4	5.1	8.8
10	1.8	0.5	0.8	0.8	3.4	5.1	8.8
11	0.8	0.5	0.8	0.8	1.3	2.0	3.5
12	0.7	0.5	0.8	0.8	1.1	1.7	3.0
13	0.7	0.5	0.8	0.8	1.1	1.7	3.0
14	0.7	0.5	0.8	0.8	1.1	1.7	3.0
15	1.8	0.5	0.8	0.8	3.4	5.1	8.8
16	1.3	0.5	0.8	0.8	2.4	3.7	6.2
16A	0.8	0.5	0.8	0.8	1.3	2.0	3.5
17	0.7	0.5	0.8	0.8	1.1	1.7	3.0
18	0.7	0.5	0.8	0.8	1.1	1.7	3.0
19	0.8	0.5	0.8	0.8	1.3	2.0	3.5
20	0.5	0.5	0.8	0.8	0.9	1.3	2.3
21	0.4	0.5	0.8	0.8	0.8	1.1	2.0
22	0.4	0.5	0.8	0.8	0.8	1.1	2.0
22A	0.7	0.5	0.8	0.8	1.1	1.7	3.0
23	0.3	0.5	0.8	0.8	0.6	0.9	1.5
24	0.4	0.5	0.8	0.8	0.8	1.1	2.0
25	1.6	0.5	0.8	0.8	2.9	4.3	7.4
26	1.7	0.5	0.8	0.8	3.1	4.6	7.9
27	1.8	0.5	0.8	0.8	3.4	5.1	8.8
28	0.8	0.5	0.8	0.8	1.3	2.0	3.5
29	1.1	0.5	0.8	0.8	1.9	2.8	4.8
30	1.1	0.5	0.8	0.8	1.9	2.8	4.8
31	0.7	0.5	0.8	0.8	1.1	1.7	3.0
32	1.1	0.5	0.8	0.8	1.9	2.8	4.8
33	0.3	0.5	0.8	0.8	0.6	0.9	1.5
34	0.1	0.5	0.8	0.8	0.2	0.3	0.5
35	0.9	0.5	0.8	0.8	1.5	2.2	3.9
36	0.7	0.5	0.8	0.8	1.1	1.7	3.0
37	0.7	0.5	0.8	0.8	1.1	1.7	3.0
38	2.5	0.5	0.8	0.8	4.6	7.1	12.2
39	2.9	0.5	0.8	0.8	5.3	8.2	14.1
40	1.1	0.5	0.8	0.8	2.1	3.1	5.4
40A	0.2	0.5	0.8	0.8	0.4	0.6	1.0
41	0.1	0.5	0.8	0.8	0.2	0.3	0.5
42	0.9	0.5	0.8	0.8	1.5	2.2	3.9
43	2	0.5	0.8	0.8	3.6	5.7	9.9
44	0.4	0.5	0.8	0.8	0.9	1.3	2.3
45	1.9	0.5	0.8	0.8	3.5	5.4	9.4
46	2.2	0.5	0.8	0.8	4.2	6.2	11
47	1.6	0.5	0.8	0.8	3.1	4.6	7.9
48	1.4	0.5	0.8	0.8	2.7	4.0	6.9
49	1.7	0.5	0.8	0.8	3.1	4.6	7.9
50	2.1	0.5	0.8	0.8	4.0	5.9	10
51	2	0.5	0.8	0.8	3.6	5.7	9.9
52	3.3	0.5	0.8	0.8	6.3	9.3	16
53	2.5	0.5	0.8	0.8	4.6	7.1	12

NOTE:
A master grading plan for drainage has been developed for this subdivision and is on file with the City of Wichita, Kansas. All drainage easements, right-of-way, or reserves shall remain at established grades or as modified with the approval of the City Engineer of the City of Wichita, Kansas. No obstructions which impede the flow of this drainage system shall be allowed.

BENCHMARK:
BRASS PLATE ON NORTH HUB CLAUD OF R.C.B. 30 EAST OF NW CORNER NE 1/4, SEC. 22, T4P. 25-S. R-1-E ELEVATION = 1371.83 NGVD29

MINIMUM BUILDING PAD ELEVATIONS FOR LOWEST OPENING TO THE STRUCTURES

LOT	BLOCK	ELEVATION
1-9	A	1353.0
10-12	A	1354.0
13-20, 34, 35	A	1355.0
44-48	A	1355.0
49-53	A	1357.0
18, 19	D	1359.5

April 26, 2005

Baughman Company, P.A.
315 E. 15th St., Wichita, KS 67202 P: 316.263.2111 F: 316.263.2149
Baughman ENGINEERING SURVEYING PLANNING LANDSCAPE ARCHITECTURE
PROJECT: FALCON FALLS 2ND ADDITION, 2ND ADDITION, FALCON FALLS, WICHITA, KS