

**PROFESSIONAL  
ENGINEERING CONSULTANTS, PA**

1440 E. English  
WICHITA, KANSAS 67211

(316) 262-2691

TO Michael E. Lindebak, PE  
City Engineer  
455 North Main  
Wichita, KS 67202

**LETTER OF TRANSMITTAL**

DATE	Sept. 29, 1988	JOB NO.	36-88335-2051
ATTENTION	Vicky Huang, P.E.		
RE:	Expressway Center		

WE ARE SENDING YOU  Attached  Under separate cover via \_\_\_\_\_ the following items:

- Shop drawings   
  Prints   
  Plans   
  Samples   
  Specifications  
 Copy of letter   
  Change order   
  \_\_\_\_\_

COPIES	DATE	NO.	DESCRIPTION
2	10-7-88		Drainage Concept

SCANNED

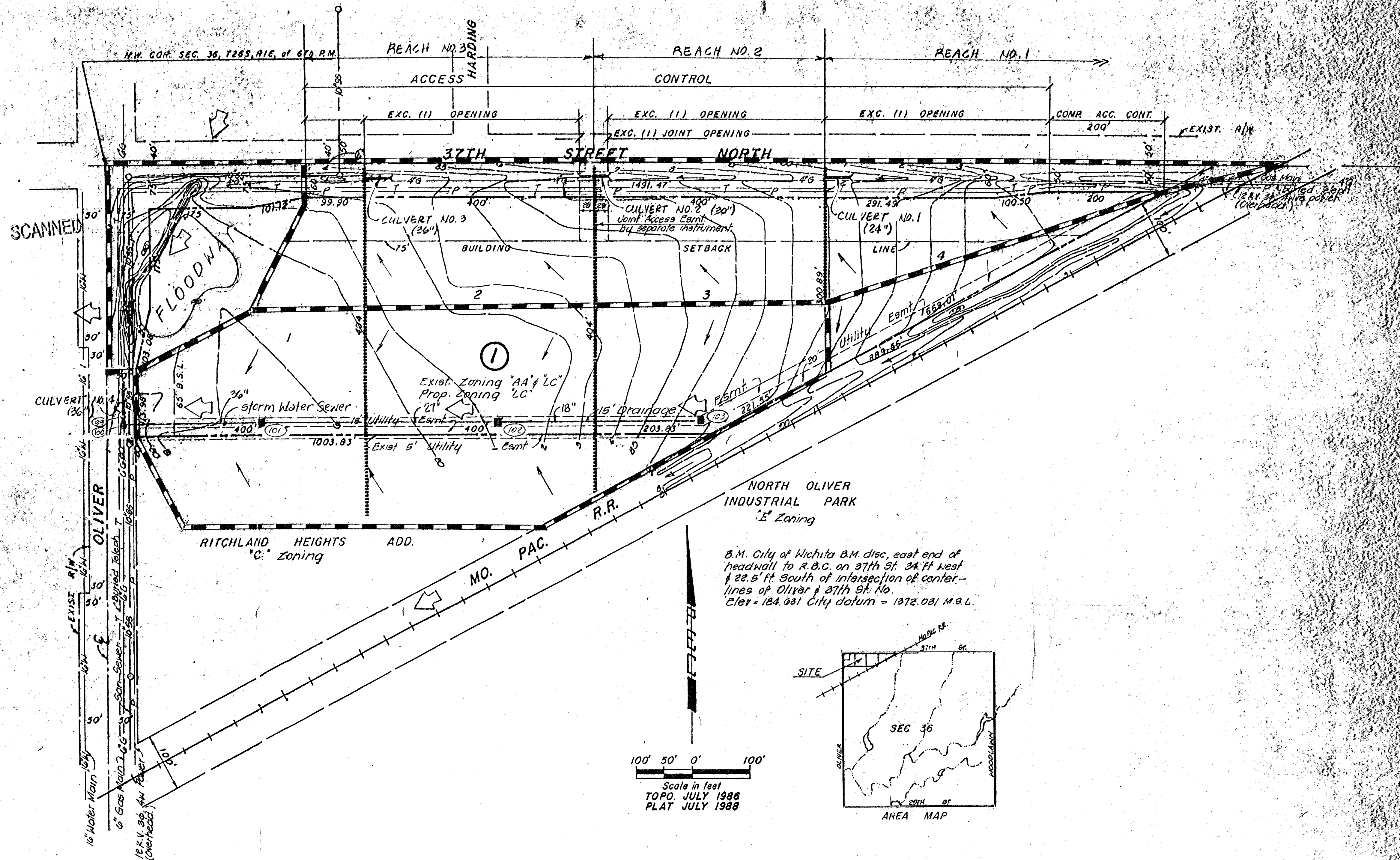
THESE ARE TRANSMITTED as checked below:

- For approval   
  Approved as submitted   
  Resubmit \_\_\_\_\_ copies for approval  
 For your use   
  Approved as noted   
  Submit \_\_\_\_\_ copies for distribution  
 As requested   
  Returned for corrections   
  Return \_\_\_\_\_ corrected prints  
 For review and comment   
  \_\_\_\_\_  
 FOR BIDS DUE \_\_\_\_\_ 19 \_\_\_\_\_  PRINTS RETURNED AFTER LOAN TO US

REMARKS The revised preliminary plat will be submitted  
on Friday, October 7, 1988 for hearing by the  
Subdivision Committee on Thursday, October 20.

COPY TO Jack Ritchie

SIGNED: Charles J. Brown



DRAINAGE PLAN 10-21-88  
rev. 11-10-88

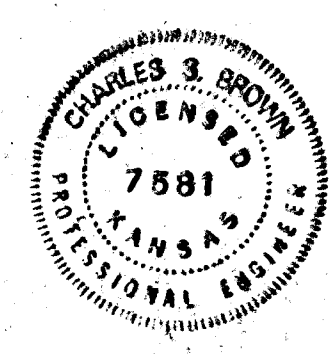
# EXPRESSWAY CENTER

Owner:  
**McArthur Beach Properties**  
 c/o Jack Ritchie  
 8100 E. 22nd St. No. Bldg. 500  
 Wichita, Ks. 67226

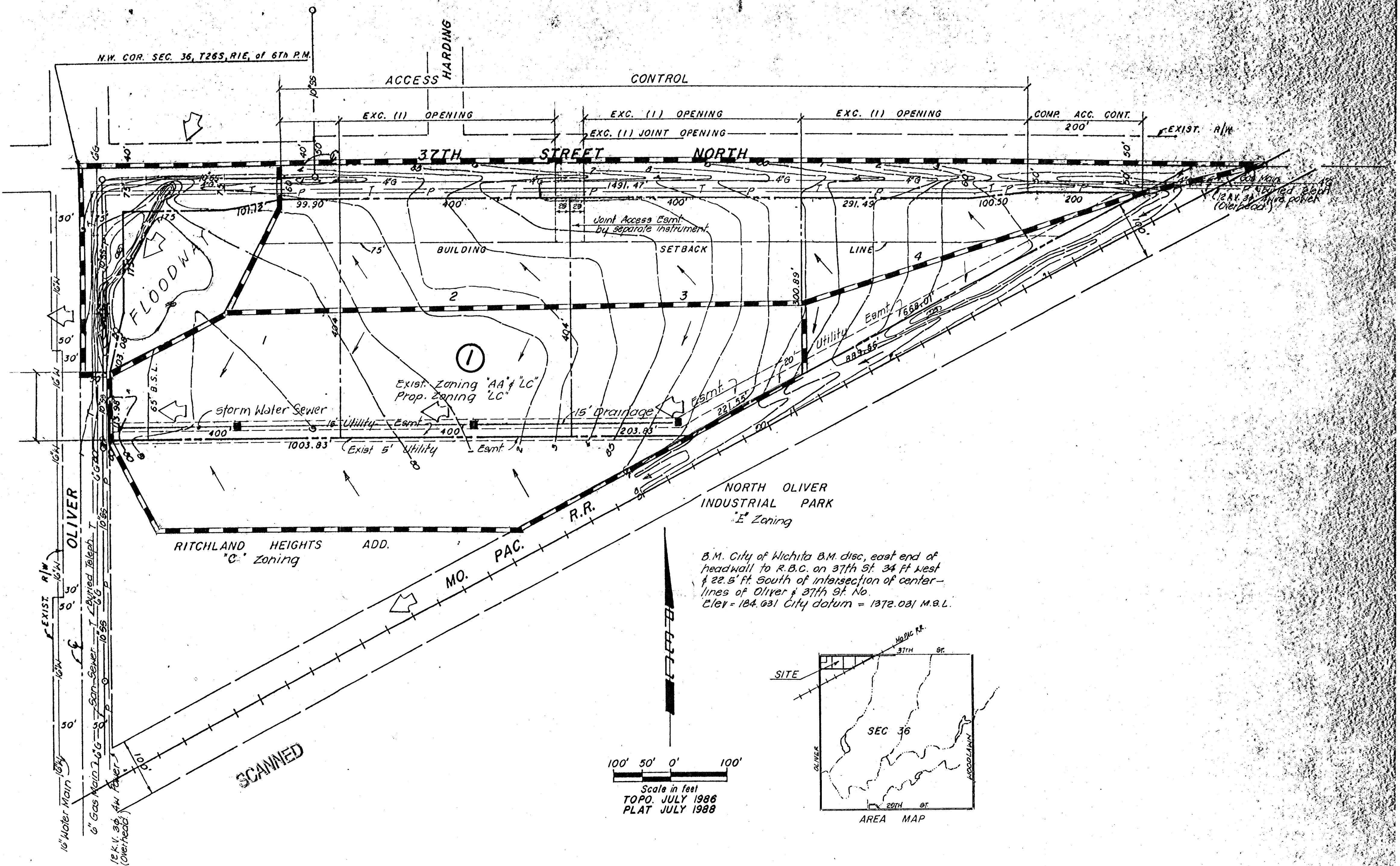
Engr.  
**P. E. C. p.a.**  
 1440 English  
 Wichita, Ks. 67211

**NOTE:**  
 Lots 1 through 4, Block 1 shall be graded to drain to existing ditches, streams, etc. via drives, flumes, private storm water sewers and/or other approved drainage facilities.

- LEGEND:**
- Drainage Direction - Minor Storm
  - Drainage Direction - Major Storm
  - Drainage Basin Boundary
  - Proposed Storm Water Sewer & Inlet & Pipe Size
  - Proposed Culvert
  - Node Identification Point
  - Drainage Sub-Basin Boundary







DRAINAGE CONCEPT 10-7-88

# EXPRESSWAY CENTER

Owner:  
 McArthur Beach Properties  
 c/o Jack Ritchie  
 8100 E. 22nd St. No. Bldg. 500  
 Wichita, Ks. 67226

Engr.  
 P. E. C. p.a.  
 1440 English  
 Wichita, Ks. 67211

NOTE:  
 Lots 1 through 4, Block 1 shall be graded to drain to existing ditches, streams, etc. via drives, flumes, private storm water sewers and/or other approved drainage facilities.

LEGEND:  

 Drainage Direction - Minor Storm  
 Drainage Direction - Major Storm  
 Drainage Basin Boundary  
 Proposed Storm Water Sewer & Inlet