

**CERTIFIED ENGINEERING DESIGN, P.A.**

810 W. Douglas, Suite C  
Wichita, KS 67203  
(316) 262-8808 Office  
(316) 262-1669 Fax

**LETTER OF TRANSMITTAL**

DATE: April 22, 2004

TO: Ms. Vicki Huang, P.E.  
Engineering Division  
City of Wichita  
7th Floor, City Hall  
455 North Main  
Wichita, KS 67202

SUBJ: Drainage Plan  
Goodwin Addition  
Wichita, KS

FROM: Harlan D. Foraker, P.E. *HDF*

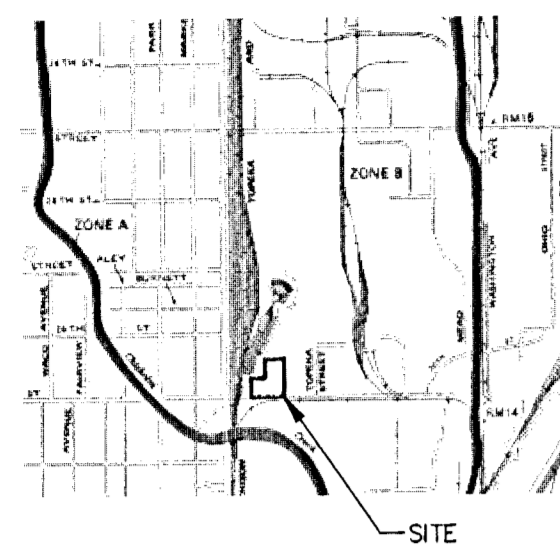
COMMENTS: Attached please find the drainage plan for the above referenced project. Please review this drainage plan at your earliest convenience and notify me of your comments. If you have any questions please contact me at (316) 262-8808.

attachments

# DRAINAGE PLAN FOR AARON GOODWIN ADDITION TO SEDGWICK COUNTY, KANSAS

## FLOOD ZONE MAP

Sec. 4, T27S, R1E



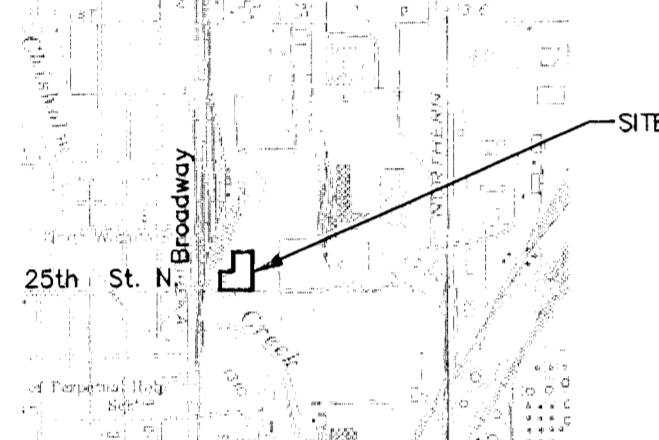
SCALE: 1" = 2,000'

### FLOOD ZONE:

Subject property is in Zone B, as shown of Federal Emergency Management Agency (FEMA) Flood Insurance Rate Map (FIRM) for Sedgwick County, Kansas, Community Panel Number 200328 0010 B, effective May 15, 1986.

## QUADRANGLE MAP

Sec. 4, T27S, R1E



WICHITA EAST QUADRANGLE

7.5 Minute Series

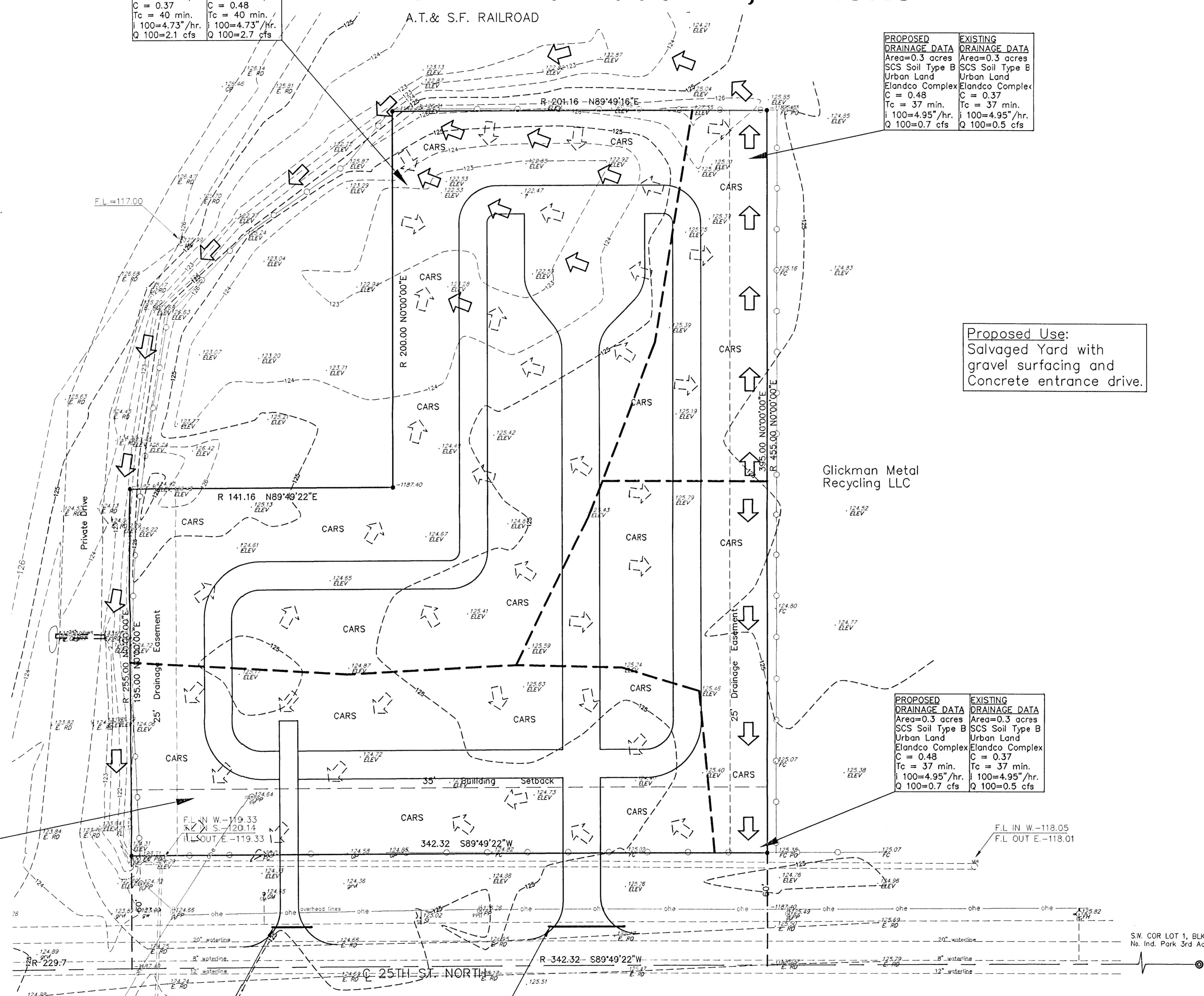
SCALE: 1" = 2,000'

EXISTING DRAINAGE DATA	PROPOSED DRAINAGE DATA
Area=1.2 acres	Area=1.2 acres
SCS Soil Type B	SCS Soil Type B
Urban Land	Urban Land
Elandco Complex	Elandco Complex
C = 0.37	C = 0.48
Tc = 40 min.	Tc = 40 min.
I 100=4.73"/hr.	I 100=4.73"/hr.
Q 100=2.1 cfs	Q 100=2.7 cfs

PROPOSED DRAINAGE DATA	EXISTING DRAINAGE DATA
Area=0.3 acres	Area=0.3 acres
SCS Soil Type B	SCS Soil Type B
Urban Land	Urban Land
Elandco Complex	Elandco Complex
C = 0.48	C = 0.37
Tc = 37 min.	Tc = 37 min.
I 100=4.95"/hr.	I 100=4.95"/hr.
Q 100=0.7 cfs	Q 100=0.5 cfs

PROPOSED DRAINAGE DATA	EXISTING DRAINAGE DATA
Area=0.3 acres	Area=0.3 acres
SCS Soil Type B	SCS Soil Type B
Urban Land	Urban Land
Elandco Complex	Elandco Complex
C = 0.48	C = 0.37
Tc = 37 min.	Tc = 37 min.
I 100=4.95"/hr.	I 100=4.95"/hr.
Q 100=0.7 cfs	Q 100=0.5 cfs

EXISTING DRAINAGE DATA	PROPOSED DRAINAGE DATA
Area=0.7 acres	Area=0.7 acres
SCS Soil Type B	SCS Soil Type B
Urban Land	Urban Land
Elandco Complex	Elandco Complex
C = 0.37	C = 0.48
Tc = 43 min.	Tc = 43 min.
I 100=4.54"/hr.	I 100=4.54"/hr.
Q 100=1.2 cfs	Q 100=1.5 cfs

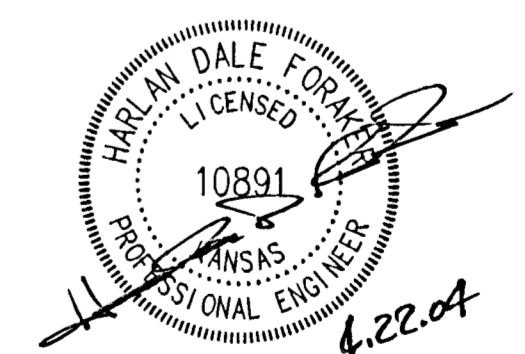
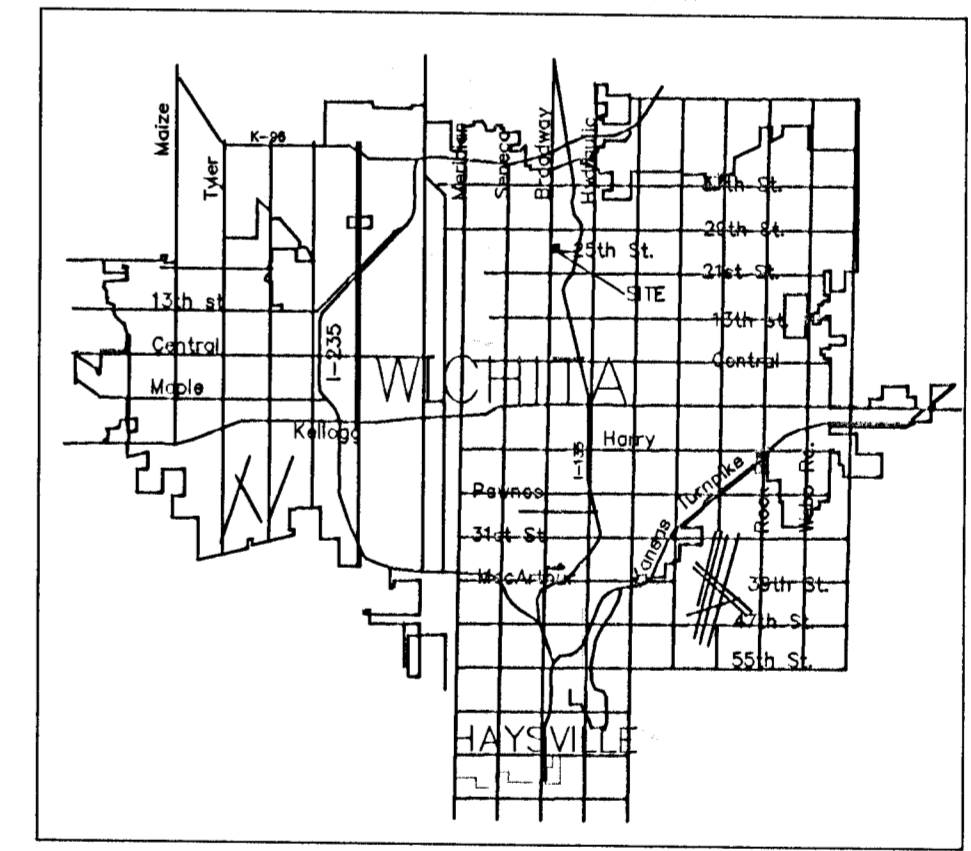


**Proposed Use:**  
Salvaged Yard with gravel surfacing and Concrete entrance drive.

Glickman Metal Recycling LLC

Owner: Ronald A. & Michelle Goodwin  
1716 S. Richmond  
Wichita, KS 67213

### LOCATION MAP

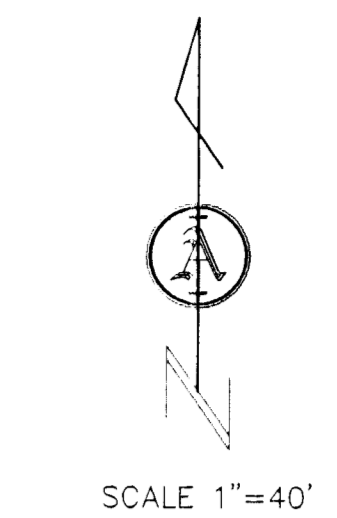


DRAINAGE PLAN PREPARED BY:  
**CERTIFIED ENGINEERING DESIGN, P.A.**  
810 WEST DOUGLAS, SUITE C  
WICHITA, KANSAS 67203  
PH: (316) 262-8808  
FAX: (316) 262-1669

**ARMSTRONG LAND SURVEY, P.A.**  
1801 E. HARRY  
WICHITA, KANSAS 67211  
PH - (316) 263-0082  
FAX - (316) 263-0082

**SURVEY DISCLAIMER:**  
TOPOGRAPHIC SURVEY AND CONTOUR MAP USED IN PREPARING PLANS WAS PROVIDED BY ARMSTRONG LAND SURVEY, P.A., 250 N. MATHEWSON, WICHITA, KS. ENGINEER DOES NOT GUARANTEE SURVEY ELEVATIONS FOR ACCURACY. CONTRACTOR SHALL VERIFY ELEVATIONS AND NOTIFY ENGINEER OF ANY DISCREPANCIES.

Proposed Entrance Pipe to be Sized during Site Development



- ### LEGEND
- - set 5/8" rebar & "Armstrong" cap
  - - nail and shinner found
  - ⊙ - iron w/ "MKEC" cap found
  - - found 1/2" iron pipe
  - ⊠ - concrete monument found
  - M - measured distance
  - P - plat distance
  - cm - calculated from measured distance
  - - property line
  - - center line
  - - easement line
  - - setback line
  - - underground utility
  - - chainlink fence
  - - cable TV riser
  - - telephone riser
  - - fire hydrant
  - - elec. transformer
  - - air conditioner
  - - power pole
  - - manhole
  - - light pole
  - - gas meter
  - - gas valve
  - - water meter
  - - water valve
  - - sign

- = Existing Drainage Flow Direction
- = Existing Drainage Flow Direction
- = Ridge Line
- = Concrete(710 s.f. or 0.16 Acres)
- = Gravel(106,275 s.f. or 2.44 Acres)