

# Drainage Plan

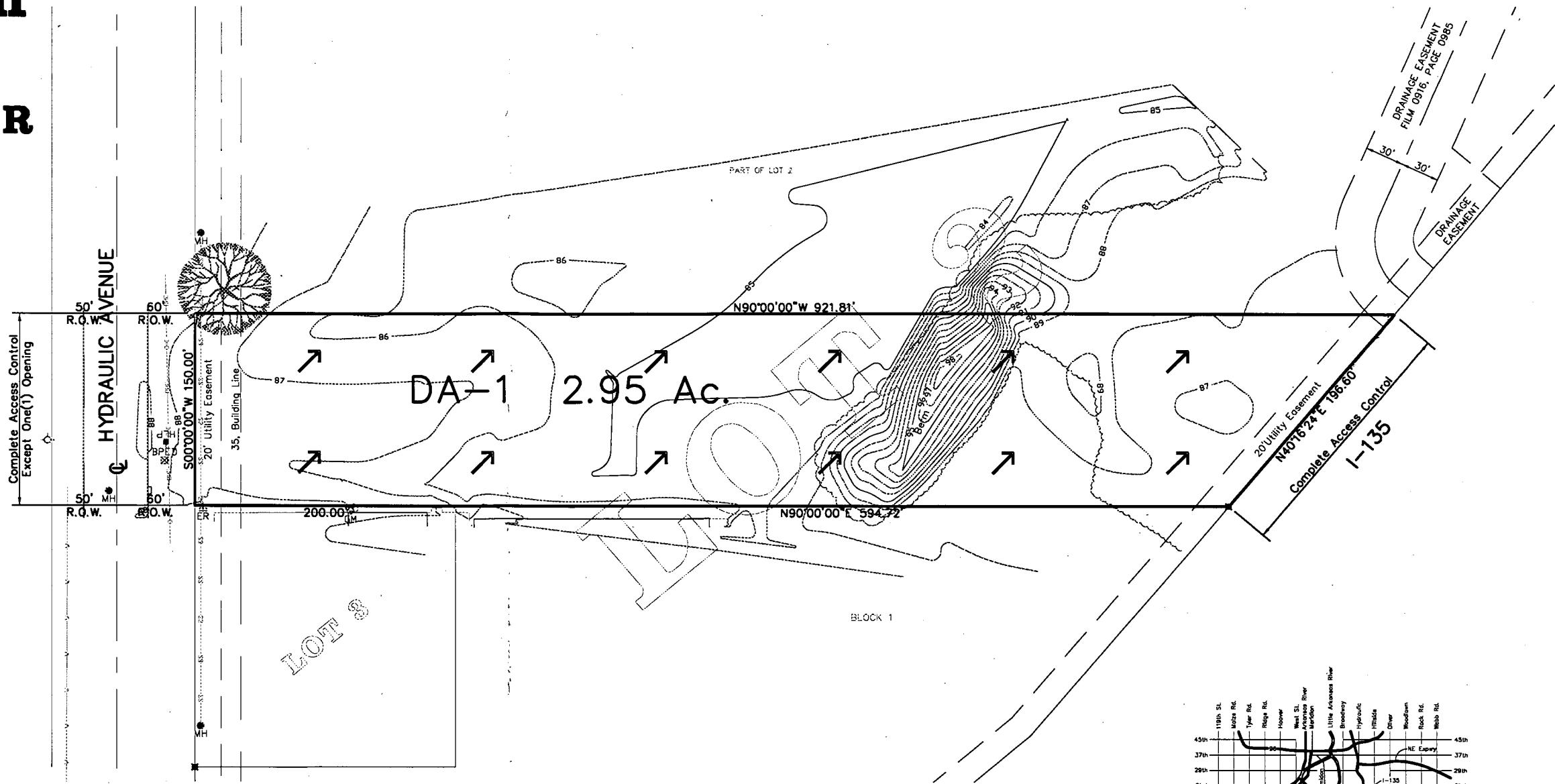
## PART OF

### LOT 2, BLOCK 1,

### I-135 POWER CENTER

### ADDITION

### WICHITA, KANSAS



Area #	Area (Ac)	Undeveloped		Developed	
		$I_p$	$I_{dc}$	$C_{up}/A_{up}$	$C_{dp}/A_{dp}$
1	2.95	4.56	7.37	3.8	8.9
TOTAL	2.95	4.56	7.37	3.8	8.9

Notes:  
 1. Detention requirements will be met with an offsite detention pond.  
 2. c values used are as follows:

	Undeveloped	Developed
10 yr	.28	.89
100yr	.41	.91

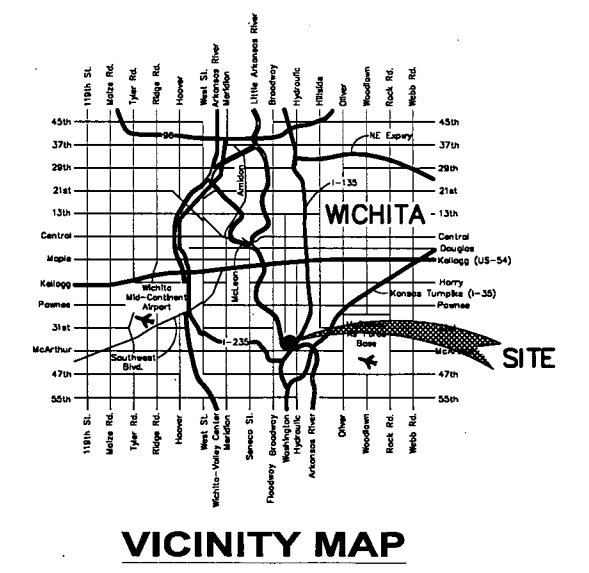
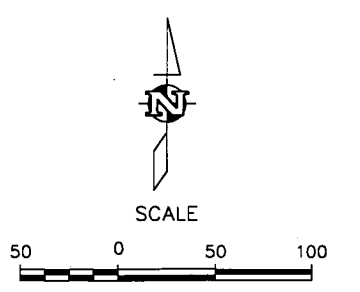
#### LEGAL DESCRIPTION

A portion of Lot 2, Block 1, I-135 Power Center Addition to the City of Wichita, Sedgwick County, Kansas being more particularly described as follows: Beginning at the Northwest corner of Lot 3, Block 1, I-135 Power Center, An Addition To The City Of Wichita, Sedgwick County, Kansas; thence N90°00'00"E on the North line of said Lot 3 for a distance of 200.00' to the Northeast corner of said Lot 3; thence continuing East on the extended North line of said Lot 3 to the East line of said Lot 2 for a distance of 594.72'; thence N40°16'24"E on the East line of said Lot 2 a distance of 196.60'; thence N90°00'00"W parallel with the North line of said Lot 3 for a distance of 921.81' to the East right-of-way line of Hydraulic Avenue; thence S00°00'00"W a distance of 150' to the Point of Beginning.

Said tract contains 128.740± s.f. (3 acres)

#### LEGEND

- ⊠ = 1/2" Rebar (found)
- R.O.W. = Right-of-Way
- BPED = Bell Pedestal
- 87 = Contour Elevation
- ⊕ = Fire Hydrant
- ER = Electric Riser
- = Fence
- GAS — = Gas
- ⊕ = Gas Meter
- MH = Manhole
- Overhead Electric — = Overhead Electric
- SS — = Sanitary Sewer
- ⊕ = Tree
- = Water
- ↗ = Drainage Arrow



FILENAME: 03085-drain

**M CONSULTING, INC.**  
**ENGINEERING SERVICES**  
 142 S. Emporia Wichita, KS 67202  
 316/265-2870 Fax: 316/265-2838

E:\projects\030\03085\03085-drain.dwg Fri Aug 01 13:24:17 2003 Aaron Earleywine