

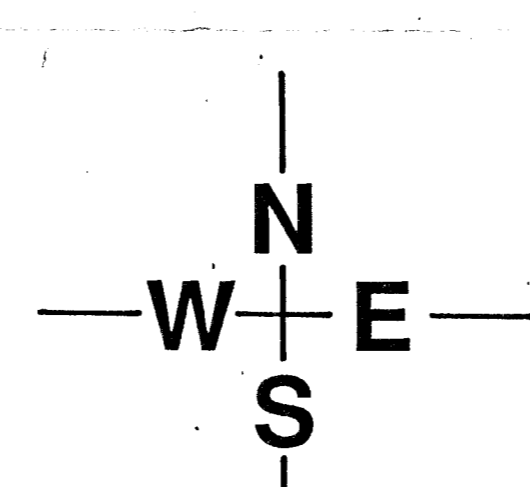
SEE REFLECTION RIDGE 7TH ADD DRAINAGE PLAN

LEGEND

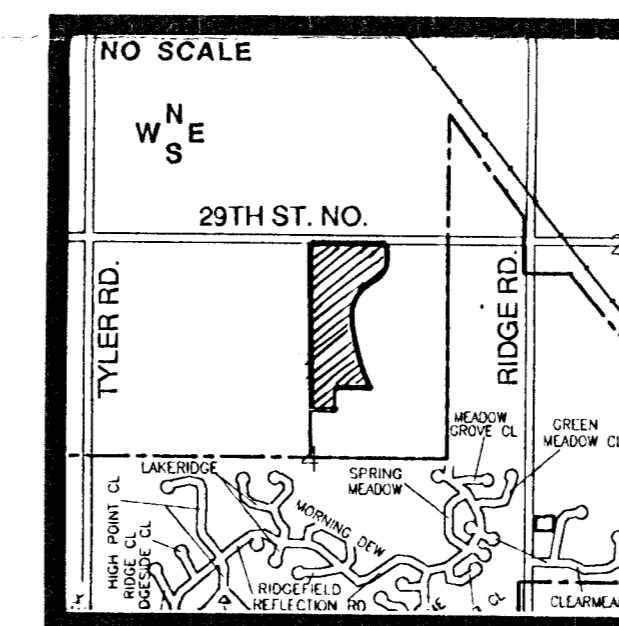
- Drainage Direction - Minor Storm
- ⇨ Drainage Direction - Major Storm
- ▬ Drainage Basin Boundary
- Prop. Storm Water Sewer & Inlet

NOTES:

- 1.) BENCH MARK: CHSLED " " N.E. COR. 3-7'X3' RIB BRIDGE ON RIDGE RD. 175' NORTH OF S.E. COR. N.E.1/4, SEC. 4, T27S, R1W. ELEV.- 1325.64' M.S.L.
- 2.) TOPOGRAPHY IS FROM AERIAL OBTAINED 15 DEC., 1990.
- 3.) RESERVE "A" IS FOR LANDSCAPING, ENTRY MONUMENTS, WALLS AND UTILITIES.
- 4.) CONTINGENT STREET DEDICATION, IF OWNER ACQUIRES ADJACENT PROPERTY ON THE WEST, MEADOW PARK CIRCLE WOULD BE EXTENDED TO THE WEST AND LOTS 14 AND 21 BLOCK 1 WOULD BE REPLACED WITH FUTURE PLAT FOR THE AREA TO THE WEST.



SCALE: 1"= 100'
CONTOUR INTERVAL= 2'



PROFESSIONAL ENGINEERING CONSULTANTS, P.A.			
ENGINEERS WICHITA, KANSAS			
Designed by	C.S.B.	Job No.	
Drawn by		Date	11-27-91
		Sh.	1 of 1

DRAINAGE CONCEPT

REFLECTION RIDGE 8TH ADD.

OWNER: REFLECTION RIDGE INC., 7926 W. 21ST STREET NORTH, WICHITA, KANSAS 67212 PH: 316-721-2153

