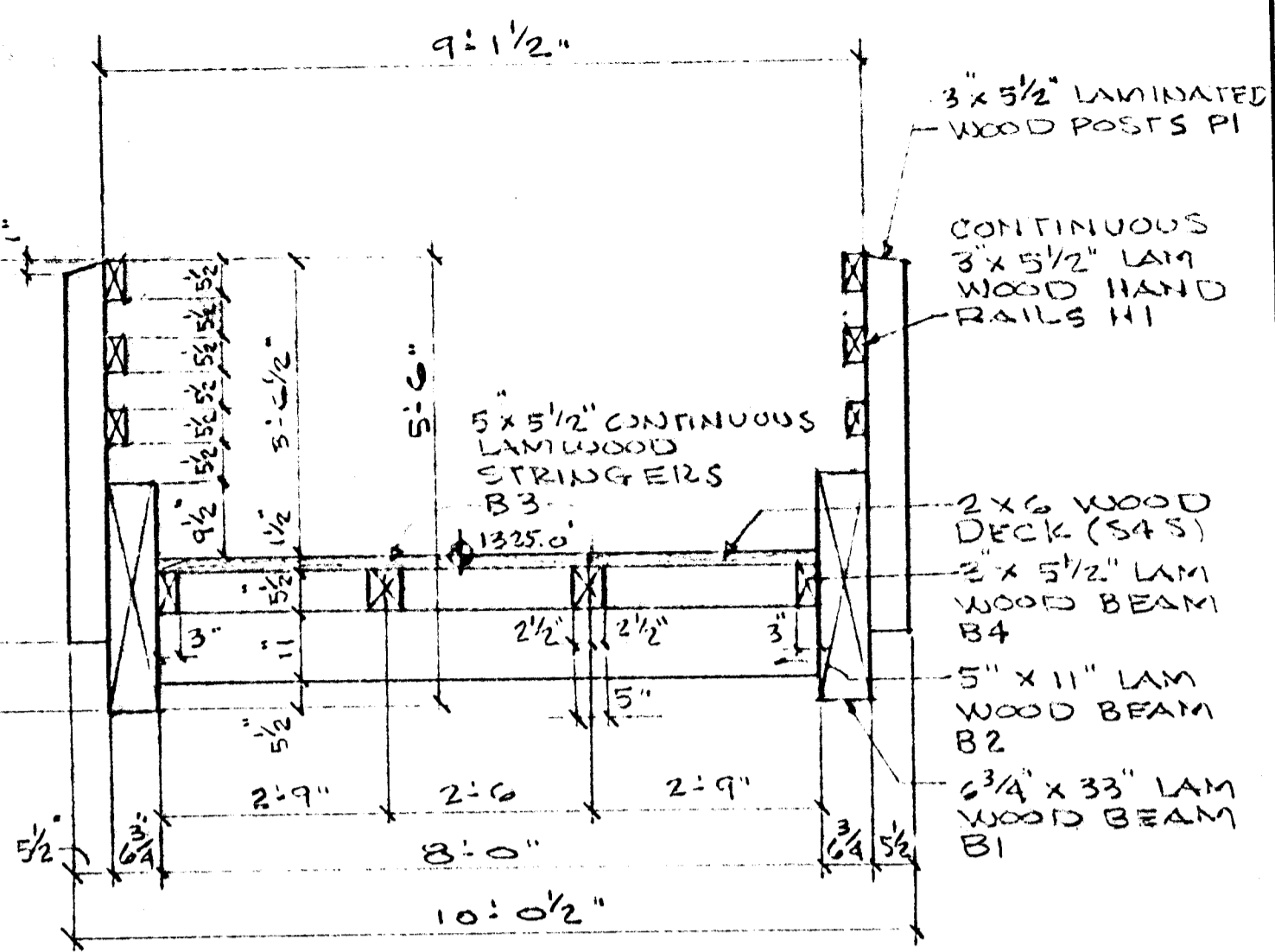
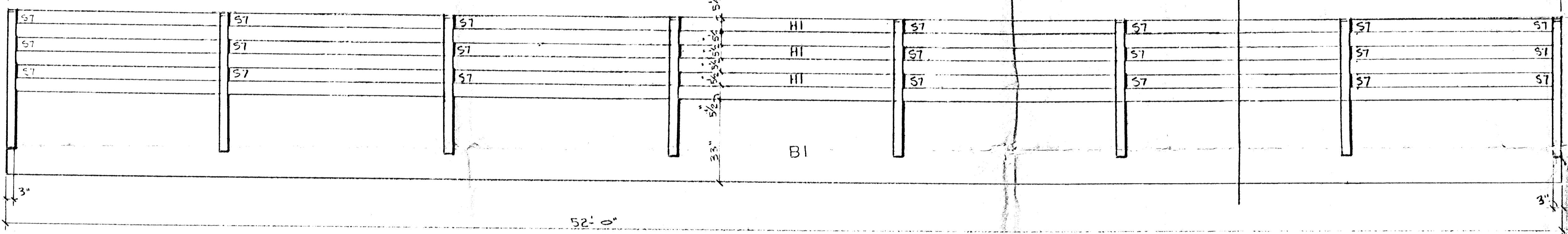


PLAN VIEW
SCALE: 1/2" = 1'-0"

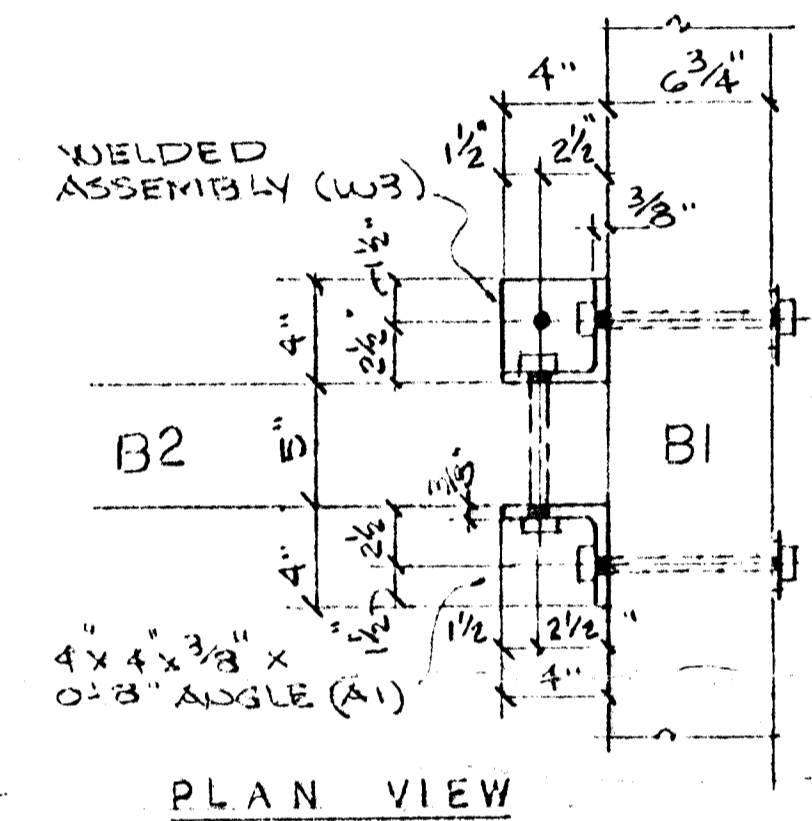
SHOW NOTE
BRIDGE TO BE SHIPPED
ASSEMBLED.



SECTION A'
SCALE: 1/2" = 1'-0"



ELEVATION
SCALE: 1/2" = 1'-0"



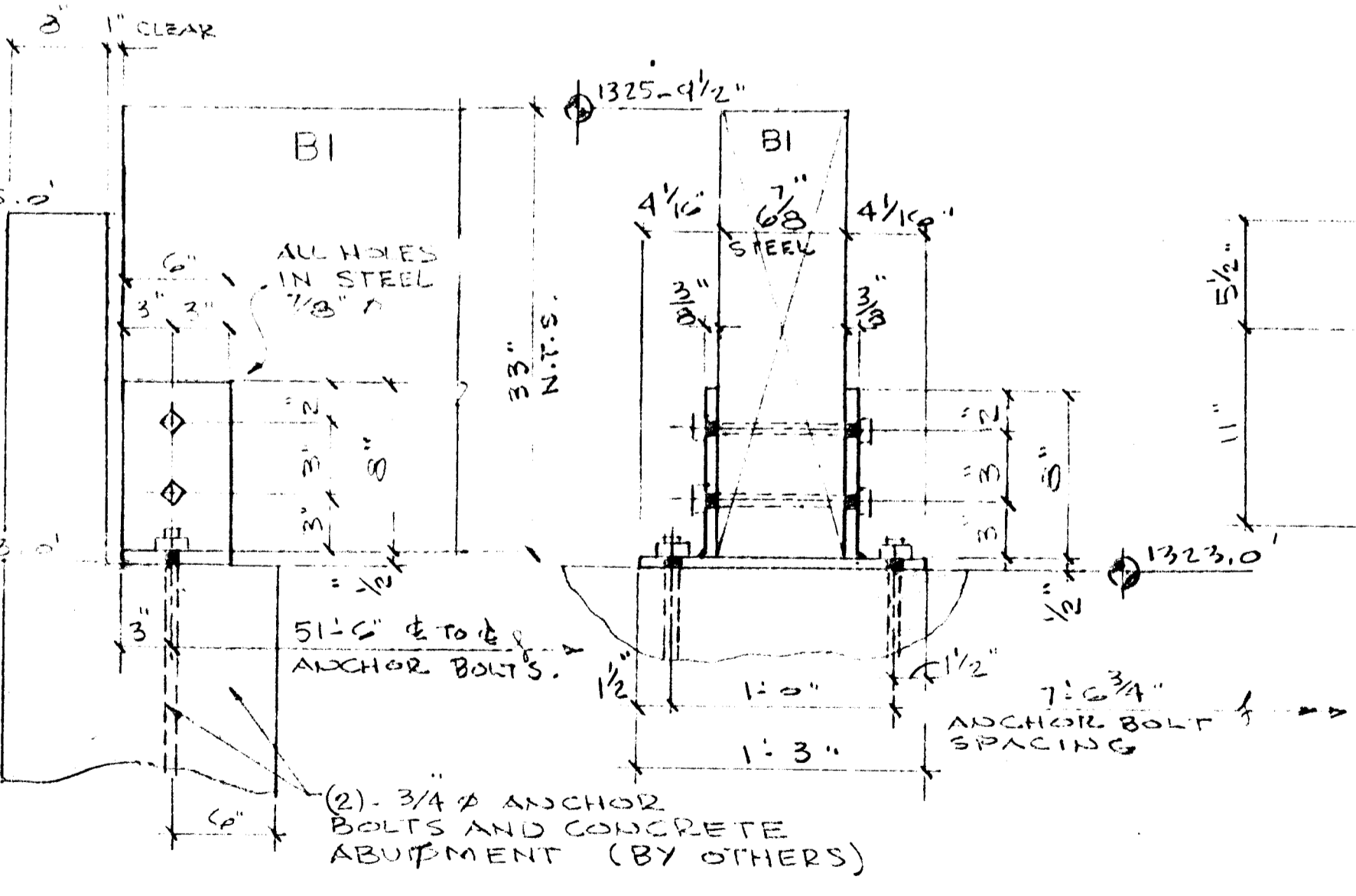
PLAN VIEW

SUBMITTAL REVIEW

Engineer acceptance of Compliance Submittals for any deviations from the requirements of the Contract Documents, unless the Contractor has in writing given written approval to the specific deviation or omission in Compliance Submittals, shall be the responsibility of the Contractor.

APPROVED AS CORRECTED APPROVED AS NOTED REVISED NOT APPROVED

DATE: 10/26/21 BY: JPH

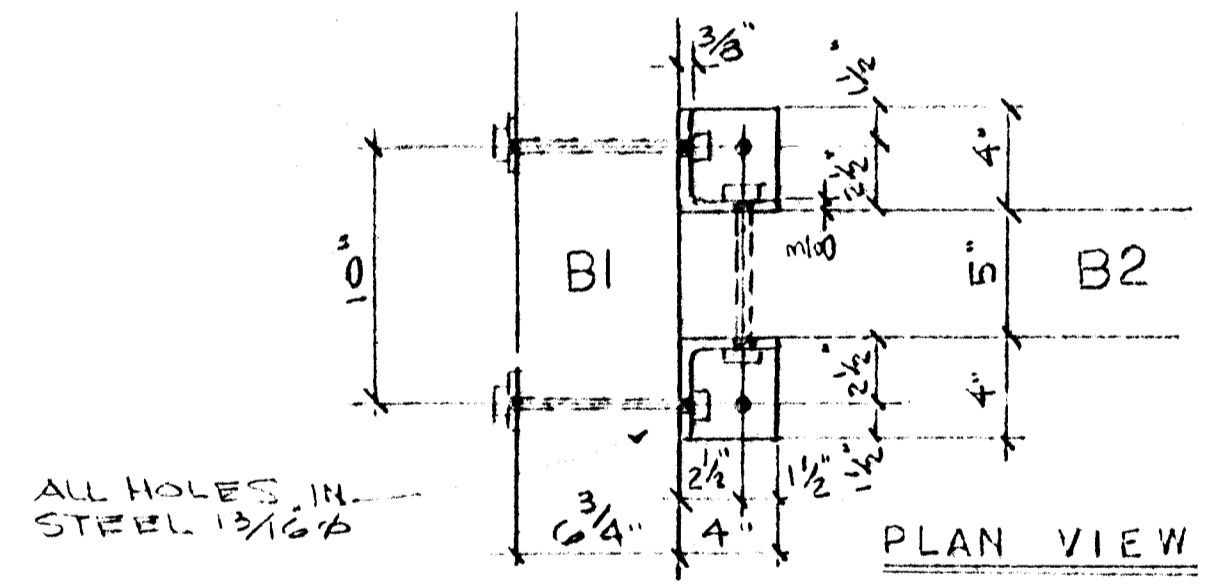


CONNECTION S1 - 4 REQUIRED

- 1- WELDED BASE SHOE (W1)
- 2- 3/4" x 3" MACH. BOLTS
- 2- 3/4" STD NUTS.

CONNECTION S2 - 14 REQUIRED

- 2- WELDED ASSEMBLIES (W2)
- 2- 3/4" x 3/2" MACH. BOLTS.
- 2- 3/4" x 4" LAG BOLTS.
- 2- 3/4" STD. NUTS.

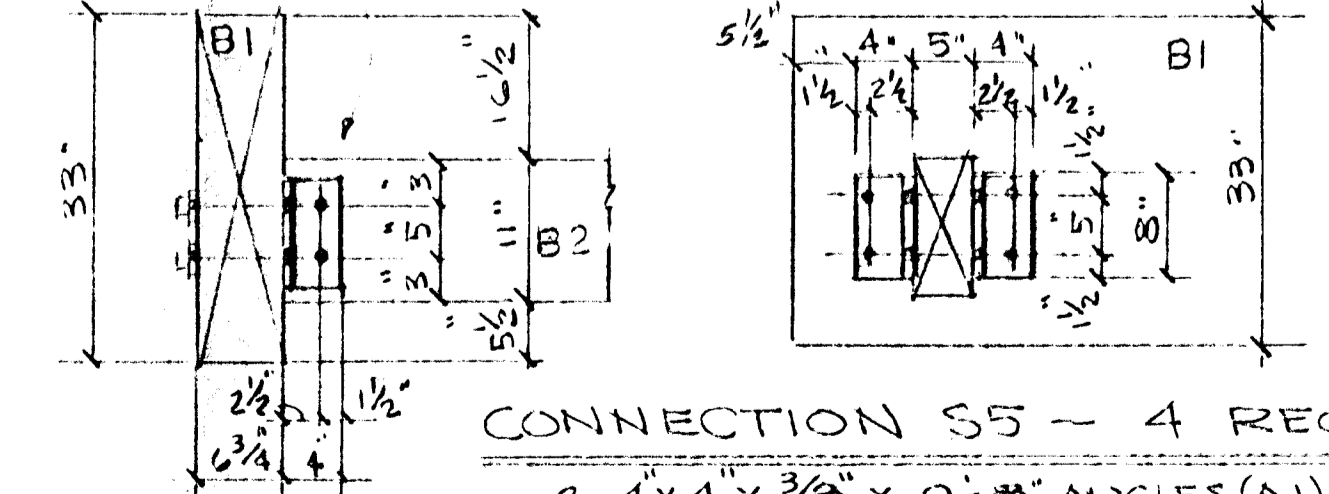


CONNECTION S3 - 6 REQUIRED

- 2- WELDED ASSEMBLIES (W3)
- 2- 3/4" x 3/2" MACH. BOLTS
- 4- 3/4" x 3" MACH. BOLTS
- 4- 3/4" I.D. WASHERS
- 6- 3/4" STD. NUTS.

CONNECTION S4 - 4 REQUIRED

- 1- 4x4x3/8x0-8" ANGLE (A1)
- 1- WELDED ASSEMBLY (W3)
- 2- 3/4" x 3/2" MACH. BOLTS.
- 4- 3/4" x 3" MACH. BOLTS.
- 4- 3/4" STD. NUTS.
- 6- 13/16" I.O. WASHERS.



CONNECTION S5 - 4 REQUIRED.

- 2- 4x4x3/8x0-8" ANGLES (A1)
- 2- 3/4" x 3/2" MACH. BOLTS.
- 4- 3/4" x 3" MACH. BOLTS.
- 4- 3/4" STD. NUTS.
- 4- 13/16" I.O. WASHERS.

SUBMITTAL DATA

FOR APPROVAL APPROVED AS NOTED REVISED NOT APPROVED

DATE: 10/26/21 BY: JPH

STORM WATER
DRAW #91

TYPE 1 LAMINATED WOOD 2 MEMBER AND CONNECTION 3 SHOP DRAWINGS	DRAWN DATE 1/11/21	SYMBOL BY DATE	4 LINE LOAD = 85 P.S.F. 5 DEAD LOAD = 12 P.S.F. 6 TOTAL LOAD = 97 P.S.F.	OWNER CITY OF WICHITA	PHONE	DEALER	DESCRIPTION 2 x 52' PEDESTRIAN BRIDGE FOR REFLECTIONS BRIDGE SITE WICHITA, KANSAS	JOB NUMBER 1065	APPROVED D.H.S. DATE 10-1-21
VEHICULAR LOAD LIMIT = 4,000 lbs.			NAME CITY OF WICHITA ADDRESS CITY/STATE		BUSINESS HOME ATTN:	NAME CITY/STATE SALESMAN	17 W. GOLDEN - BOX 98 POLO, ILLINOIS 61094 (815) 946-3994 (815) 946-2479 FAX	COPYRIGHT © 2021. THESE DRAWINGS ARE THE PROPERTY OF T.P. CO. AND SHALL NOT BE COPIED OR DISCLOSED TO UNAUTHORIZED PARTIES IN PART OR IN ENTIRETY WITHOUT OUR WRITTEN PERMISSION AND THEY SHALL NOT BE USED FOR CONSTRUCTION UNLESS APPROVED BY A C.P.R. REPRESENTATIVE.	

