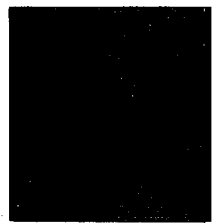


PROFESSIONAL
ENGINEERING
CONSULTANTS
PROFESSIONAL ASSOCIATION



DRAINAGE PLAN
AND
SUPPORTING CALCULATIONS

FOR
REFLECTION RIDGE 8TH ADDITION
TO WICHITA, SEDGWICK COUNTY, KANSAS

PREPARED BY
PROFESSIONAL ENGINEERING CONSULTANTS, P.A.
ENGINEERS
WICHITA, KANSAS

JANUARY 17, 1992

303 S. TOPEKA
WICHITA, KANSAS 67202
(316) 262-2691



I HYDROLOGY Use Rational Method $Q = cIA$

Determine "c"

<u>Node</u>	<u>Soil Type</u>	<u>Hydrologic Group</u>	<u>Land Use</u>	<u>C₂</u>	<u>C₁₀₀</u>
101	Sa; Sc	B	Res. 1/4 Ac.	0.44	0.61
100	(End section)				

Determine "I"

Assume $t_c = 15$ minutes $\therefore I_2 = 3.83$ $I_{100} = 7.37$

Determine "A"

<u>Node</u>	<u>Plan. Units</u>	<u>Area (SF)</u>	<u>Area (Ac)</u>
101	22.13	231,300	5.30
100	(End section)		

Determine "Q₂"

<u>Node</u>	<u>C₂</u>	<u>I₂</u>	<u>A</u>	<u>Q₂</u>
101	0.44	3.83	5.30	8.9
100	(End section)			

Determine "Q₁₀₀"

<u>Node</u>	<u>C₁₀₀</u>	<u>I₁₀₀</u>	<u>A</u>	<u>Q₁₀₀</u>
101	0.61	7.37	5.30	23.8
100	(End section)			



Date 1/16/92 Page 2 of 2

Project Reflection Ridge 8th Add.

Item Drainage Plan SWS

II INLET SIZING (100-Yr)

$$Q_{100} = 23.8$$

Use 10' inlet in sump condition

$Q_{allowable} = 26 \text{ cfs}$ w/ 0.3' walk grade
(see charts)

IV STREET FLOW (2-Yr)

$$Q_2 = 8.9 \text{ cfs}$$

95% N. side cul-de-sac = 8.5
street slope = 0.5%

$$d = 0.42'$$

$d_{max} = 0.55'$ (std curb) - OK

street flow 100 - Yr = 23.8 cfs OK

Input File: rr8xxx.stm

Reflection Ridge 8th Addition Drainage Plan
mub 1/17/92

Storm Frequency = 100-Year

* * * H Y D R O L O G Y * * *

Tributary Area										Hydrology Summation				Conduit Data			
Node to	C	Area	Slope	Length	TC(0)	I(0)	Q(0)	TC	I	Q	Sum Q	Size	Velocity	Length	TT	TT+TC	
Node		(Ac)	(%)	(Ft)	(Min)	(In/Hr)	(CFS)	(Min)	(In/Hr)	(CFS)	(CFS)		(Ft/Sec)	(Ft)	(Min)	(Min)	
101	100	.61	5.30	.00	.0	15.00	8.97	23.80	15.00	8.97	23.80	23.80	24"	7.58	180.00	.40	15.40

Date: 01-17-1992
Time: 09:11:28

Input File: rr8xxx.stm

Reflection Ridge 8th Addition Drainage Plan
mub 1/17/92

Storm Frequency = 100-Year

* * * HYDRAULICS * * *

```
*****  
Node      Hyd-Slope  Friction  Bend      Transition  Manhole  Deflection  Junction  Total  Hyd-GI  Desired  Diff.  
          (Ft/Ft)   (Ft)     (Ft)     (Ft)       (Ft)     (Ft)       (Ft)     (Ft)   Elevation Elevation (Ft)  
*****
```

Node	Hyd-Slope (Ft/Ft)	Friction (Ft)	Bend (Ft)	Transition (Ft)	Manhole (Ft)	Deflection (Ft)	Junction (Ft)	Total (Ft)	Hyd-GI Elevation	Desired Elevation	Diff. (Ft)
101	.01107	1.9923	.0000	.0000	.0000	.0000	.0000	1.9923	1332.9920	1335.0000	2.01
100	.00000	.0000	.0000	.0000	.0000	.0000	.0000	.0000	1331.0000	1331.0000	.00

```
*****
```



Date 1/16/92 Page 1 of 2

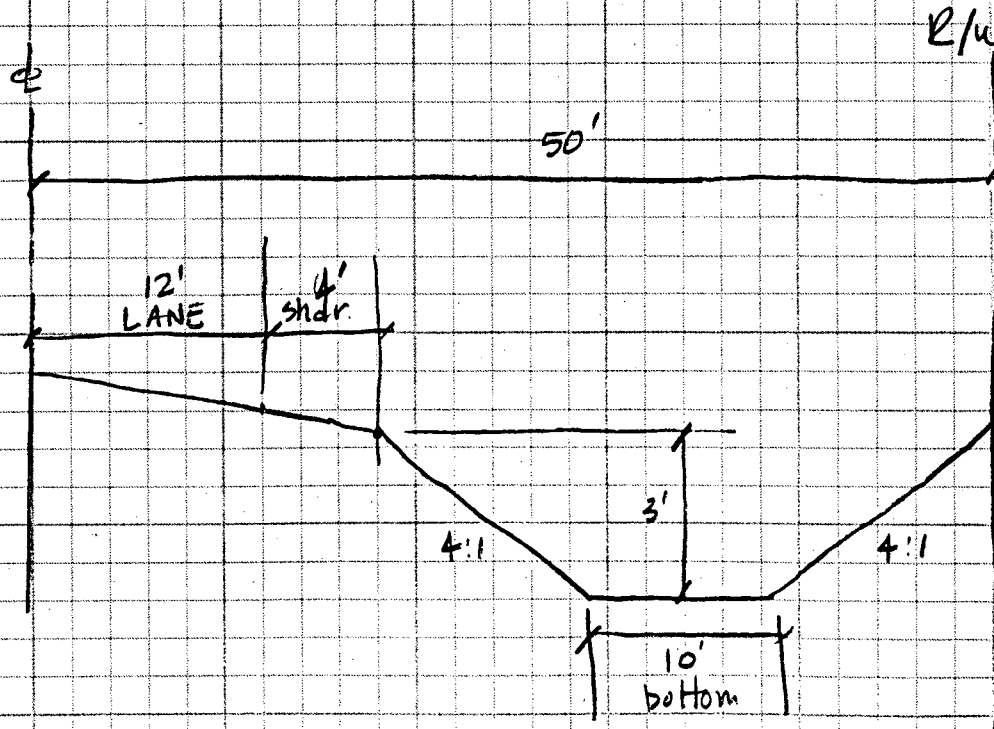
Project Reflection Ridge 8th

Item 29th St. Channel

1. Q_{100} @ Reflection Ridge 6th (South ditch 29th) = 568 cfs

2. Q_{100} @ Reflection Ridge 7th (System 200) = 142 cfs

$\therefore Q_{100}$ in 29th Ditch west of Tee Time = $568 - 142 = 426$ cfs



Find Q_{max} for channel section above



Date 1/16/92 Page 2 of 2

Project Reflection Ridge 8th Add.

Item Drainage Plan - 29th St. Channel.

$$Q_{max} = \frac{1.486}{n} A R^{2/3} s^{1/2}$$

$$n = 0.03$$

$$A = 66 \text{ SF}$$

$$p = 34.7$$

$$R = A/p = 66/34.7 = 1.8999$$

$$R^{2/3} = 1.533$$

$$s = 0.8\% = 0.008$$

$$s^{1/2} = 0.08944$$

$$Q_{max} = \frac{1.486}{0.03} \times 66 \times 1.533 \times 0.08944$$

$$= 448 \text{ cfs}$$

$$Q_{max} > Q_{100} (426)$$

\therefore Channel Section OK

R. 1 W.

Reflection Ridge 8th

Pb

La (Joins sheet 25)

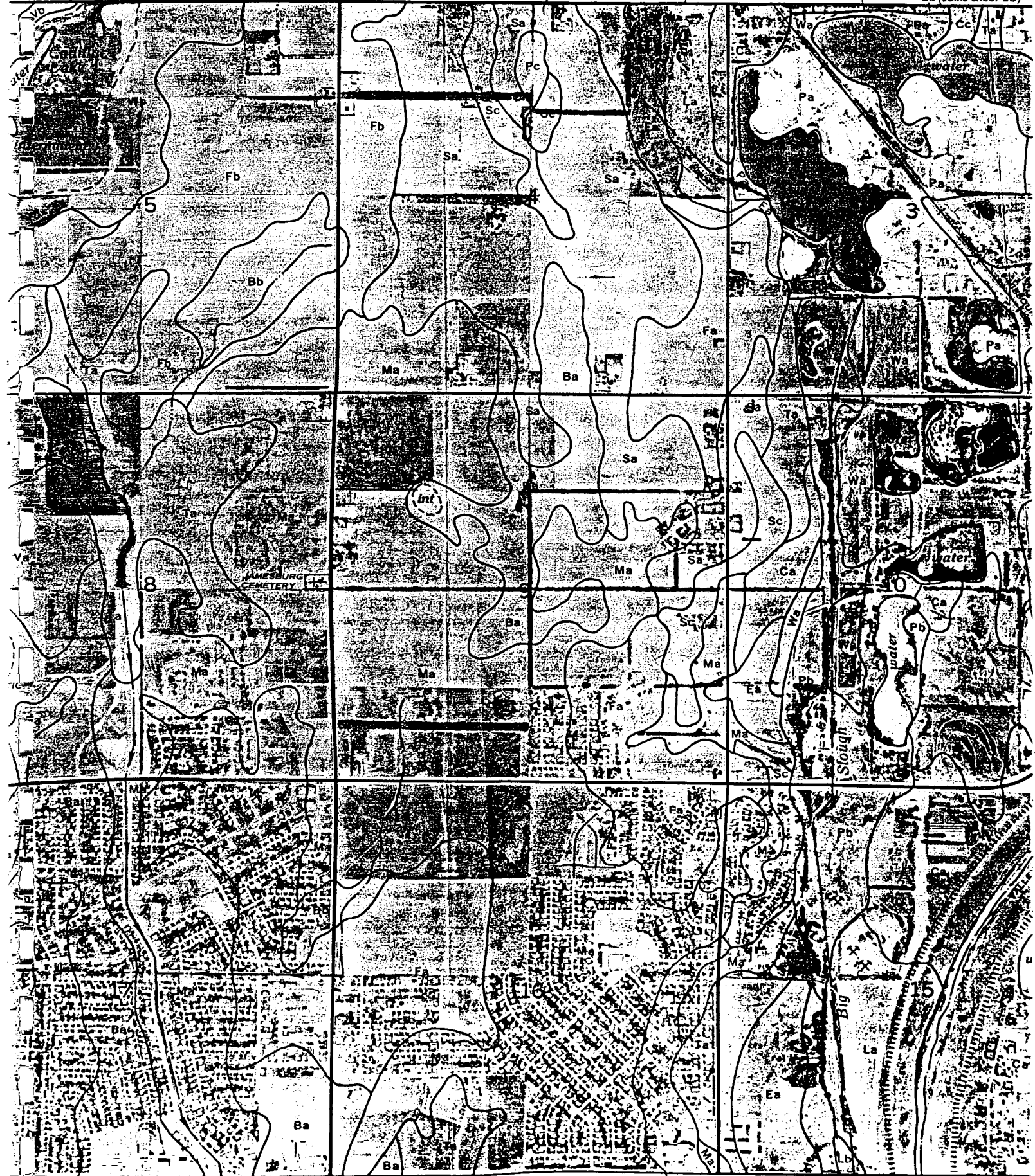


EXHIBIT NO. 1

SOIL LEGEND

<u>SYMBOL</u>	<u>HYDROLOGIC GROUP</u>	<u>NAME</u>
Aa	B	Albion-Shellabarger sandy loams, 1 to 4 percent slopes
Ab	B	Albion and Shellabarger sandy loams, 7 to 15 percent slopes
Ba	C	Blanket silt loam, 0 to 1 percent slopes
Bb	C	Blanket silt loam, 1 to 3 percent slopes
Ca	B	Canadian fine sandy loam
Cb	B	Canadian-Waldeck fine sandy loams
Cc	D	Carwile fine sandy loam
Cd	B	Clark-Ost clay loams, 1 to 4 percent slopes
Ce	C	Cline silty clay, 3 to 6 percent slopes
Ea	B	Elandco silt loam
Eb	B	Elandco silt loam, occasionally flooded
Ec	B	Elandco silt loam, frequently flooded
Fa	B	Farnum loam, 0 to 1 percent slopes
Fb	B	Farnum loam, 1 to 3 percent slopes
Fc	B	Farnum loam, sandy substratum, 0 to 1 percent slopes
Ga	D	Goessel silty clay, 0 to 1 percent slopes
Gb	D	Goessel silty clay, 1 to 2 percent slopes
Ia	D	Irwin silty clay loam, 1 to 3 percent slopes
Ib	D	Irwin silty clay loam, 3 to 6 percent slopes
Ic	D	Irwin silty clay loam, 2 to 6 percent slopes, eroded
La	C	Lesho loam
Lb	A	Lincoln soils
Ma	B	Milan loam, 1 to 3 percent slopes
Mb	B	Milan form, 3 to 6 percent slopes
Mc	B	Milan clay loam, 2 to 6 percent slopes, eroded
Na	B	Naron fine sandy loam
Oc	D	Owens clay loam, 1 to 3 percent slopes
Od	D	Owens-Rock outcrop complex, 3 to 10 percent slopes
Pa		Pits
Pb	D	Plevna fine sandy loam
Pc	A	Pratt loamy fine sand, undulating
Pd	A	Pratt-Tivoli complex, rolling
Ra	D	Renfrow silty clay loam, 1 to 3 percent slopes
Rb	D	Renfrow silty clay loam, 3 to 6 percent slopes
Rc	D	Renfrow-Owens clay loams, 1 to 4 percent slopes
Rd	D	Rosehill silty clay, 1 to 3 percent slopes
Sa	B	Shellabarger sandy loam, 1 to 3 percent slopes
Sb	B	Shellabarger sandy loam, 3 to 6 percent slopes
Sc	B	Shellabarger sandy loam, 3 to 6 percent slopes, eroded
Ta	D	Tabler silty clay loam
Tb	D	Tabler-Drummond complex
Ua	B	Urban land-Canadian complex
Ub	B	Urban land-Elandco complex
Uc	B	Urban land-Farnum complex, 0 to 3 percent slopes
Ud	D	Urban land-Irwin complex, 1 to 3 percent slopes
Ue	D	Urban land-Tabler complex
Va	B	Vanoss silt loam, 0 to 1 percent slopes
Vb	B	Vanoss silt loam, 1 to 3 percent slopes
Vc	B	Vanoss silt loam, 3 to 6 percent slopes
Vd	B	Vanoss silt loam, 3 to 6 percent slopes, eroded
Ve	D	Vernon sandy loam, 1 to 3 percent slopes
Vf	D	Vernon sandy loam, 3 to 6 percent slopes
Wa	C	Waldeck sandy loam
Wb	D	Waurika silt loam

ATTACHMENT D

DRAINAGE CRITERIA

CITY OF WICHITA, KANSAS

RECOMMENDED RUNOFF COEFFICIENTS FOR RATIONAL METHOD
AND PERCENT IMPERVIOUS FOR UNIT HYDROGRAPH METHOD

Land Use or Surface Characteristics	Percent Impervious	Frequency			
		<u>2</u>	<u>5</u>	<u>10</u>	<u>100</u>
1. Business:					
Downtown Areas	95	0.84	0.85	0.87	0.91
Neighborhood Areas	70	0.68	0.69	0.73	0.80
2. Residential:					
<u>Single Family (Soil Group D)</u>					
1/8 Acre	50	0.57	0.61	0.66	0.79
1/4 Acre	38	0.50	0.54	0.62	0.76
1/3 Acre	30	0.46	0.50	0.59	0.73
1/2 Acre	25	0.42	0.48	0.56	0.72
3/4 Acre	22	0.42	0.46	0.55	0.71
1 Acre	20	0.41	0.45	0.54	0.71
<u>Multi-Family (Soil Group D)</u>					
Multi-Unit (detached)	60	0.62	0.66	0.72	0.82
Multi-Unit (attached)	65	0.64	0.68	0.73	0.83
Apartments	75	0.70	0.73	0.79	0.86
<u>Single Family (Soil Group C)</u>					
1/8 Acre	50	0.55	0.58	0.64	0.73
1/4 Acre	38	0.48	0.51	0.57	0.68
1/3 Acre	30	0.43	0.46	0.53	0.65
1/2 Acre	25	0.40	0.43	0.50	0.63
3/4 Acre	22	0.39	0.42	0.49	0.62
1 Acre	20	0.37	0.40	0.48	0.61
<u>Multi-Family (Soil Group C)</u>					
Multi-Unit (detached)	60	0.60	0.63	0.69	0.77
Multi-Unit (attached)	65	0.63	0.66	0.71	0.79
Apartments	75	0.68	0.72	0.77	0.83
<u>Single-Family (Soil Group B)</u>					
1/8 Acre	50	0.52	0.54	0.59	0.67
1/4 Acre	38	0.44	0.46	0.52	0.61
1/3 Acre	30	0.39	0.41	0.47	0.57
1/2 Acre	25	0.36	0.38	0.44	0.54
3/4 Acre	22	0.34	0.36	0.42	0.52
1 Acre	20	0.33	0.35	0.40	0.51
<u>Multi-Family (Soil Group B)</u>					
Multi-Unit (detached)	60	0.58	0.60	0.65	0.72
Multi-Unit (attached)	65	0.61	0.64	0.68	0.75
Apartments	75	0.67	0.70	0.74	0.80

Land Use or Surface Characteristics	Percent Impervious	Frequency			
		2	5	10	100
<u>Single Family (Soil Group A)</u>					
1/8 Acre	50	0.47	0.50	0.54	0.60
1/4 Acre	38	0.39	0.41	0.45	0.52
1/3 Acre	30	0.33	0.35	0.39	0.47
1/2 Acre	25	0.30	0.31	0.35	0.44
3/4 Acre	22	0.28	0.29	0.33	0.42
1 Acre	20	0.26	0.28	0.32	0.40
<u>Multi-Family (Soil Group A)</u>					
Multi-Unit (detached)	60	0.55	0.57	0.61	0.67
Multi-Unit (attached)	65	0.58	0.60	0.64	0.70
Apartments	75	0.65	0.68	0.72	0.77
3. Industrial:					
Light Areas	70	0.68	0.69	0.73	0.80
Heavy Areas	80	0.74	0.76	0.79	0.84
4. Playgrounds:					
	15	0.33	0.35	0.42	0.55
5. Schools:					
	40	0.49	0.51	0.56	0.66
6. Railroad Yard Areas:					
	30	0.43	0.45	0.50	0.62
7. Undeveloped Urban Areas:					
Offsite Flow Analysis (when land use not defined)	45	0.52	0.54	0.59	0.68
8. Streets:					
Paved	99	0.87	0.88	0.90	0.93
Gravel	00	0.24	0.26	0.33	0.48
9. Drive, Parking Lots and Walks:					
	96	0.87	0.87	0.88	0.89
10. Roofs:					
	90	0.80	0.85	0.90	0.93
11. Urban Lawn Areas (See Note No. 1 below):					
<u>Soil Group A</u>					
Slope less than 1%	00	0.08	0.09	0.13	0.23
Slope 1% to 4%	00	0.12	0.13	0.17	0.27
Slope more than 4%	00	0.16	0.17	0.21	0.31
<u>Soil Group B</u>					
Slope less than 1%	00	0.16	0.18	0.24	0.37
Slope 1% to 4%	00	0.20	0.22	0.28	0.41
Slope more than 4%	00	0.24	0.26	0.32	0.45
<u>Soil Group C</u>					
Slope less than 1%	00	0.24	0.27	0.35	0.51
Slope 1% to 4%	00	0.26	0.29	0.37	0.53
Slope more than 4%	00	0.28	0.31	0.39	0.55

Land Use or Surface Characteristics	Percent Impervious	Frequency			
		<u>2</u>	<u>5</u>	<u>10</u>	<u>100</u>
<u>Soil Group D</u>					
Slope less than 1%	00	0.28	0.33	0.43	0.63
Slope 1% to 4%	00	0.30	0.35	0.45	0.65
Slope more than 4%	00	0.32	0.37	0.47	0.67

Note No. 1: Coefficients shown in the above table are for pervious open space areas with thick turf which includes pervious areas in parks and cemeteries. Coefficients shown above must be increased 0.02 for use with agricultural pasture areas. Coefficients shown above must be reduced by 0.04 for use with agricultural cultivated areas. Group A soils are well-drained, coarse textured sands with high infiltration rates. Group B soils are moderately well-drained, moderately coarse textured soils with moderate infiltration rates. Group C soils are moderately poor-drained, moderately fine textured soils with slow infiltration rates. Group D soils are poor-drained, fine textured soils with very slow infiltration rates.

GENERAL NOTE: These Rational Formula Coefficients may not be valid for basins 320 acres or larger.

ATTACHMENT A
DRAINAGE CRITERIA MANUAL

CITY OF WICHITA, KANSAS

RAINFALL INTENSITY TABLE FOR SEDGWICK COUNTY, KANSAS

The following tabulation contains rainfall intensity in inches per hour as derived from ESSA Weather Bureau Technical Paper 40 Modified to NWS Hydro-35, 1977 During First Hour

DURATION IN MINUTES	RETURN PERIODS OF						
	1-YR	2-YR	5-YR	10-YR	25-YR	50-YR	100-YR
5	4.18	5.57	6.53	7.41	8.52	9.48	10.32
6	3.99	5.32	6.25	7.09	8.16	9.09	9.89
7	3.81	5.09	5.99	6.81	7.84	8.74	9.50
8	3.66	4.89	5.75	6.55	7.55	8.42	9.15
9	3.52	4.70	5.54	6.31	7.28	8.13	8.83
10	3.39	4.52	5.34	6.09	7.04	7.86	8.54
11	3.27	4.36	5.16	5.89	6.81	7.61	8.27
12	3.18	4.21	4.99	5.71	6.60	7.38	8.02
13	3.05	4.08	4.84	5.53	6.41	7.17	7.79
14	2.96	3.95	4.69	5.37	6.23	6.97	7.57
15	2.87	3.83	4.56	5.22	6.06	6.78	7.37
16	2.78	3.72	4.43	5.08	5.90	6.60	7.18
17	2.71	3.61	4.31	4.95	5.75	6.44	7.00
18	2.63	3.51	4.20	4.83	5.61	6.29	6.84
19	2.56	3.42	4.10	4.71	5.47	6.14	6.68
20	2.50	3.33	4.00	4.60	5.35	6.00	6.53
21	2.44	3.25	3.90	4.50	5.23	5.87	6.39
22	2.38	3.17	3.81	4.40	5.12	5.75	6.26
23	2.32	3.10	3.73	4.31	5.01	5.63	6.13
24	2.27	3.03	3.65	4.22	4.91	5.52	6.01
25	2.22	2.96	3.57	4.13	4.81	5.41	5.90
26	2.20	2.90	3.50	4.05	4.72	5.31	5.79
27	2.16	2.84	3.43	3.98	4.63	5.21	5.69
28	2.14	2.78	3.37	3.90	4.55	5.12	5.59
29	2.11	2.72	3.30	3.83	4.47	5.03	5.49
30	2.08	2.67	3.24	3.76	4.39	4.94	5.40
31	2.05	2.62	3.19	3.70	4.32	4.86	5.32
32	2.02	2.57	3.10	3.63	4.25	4.79	5.22
33	1.99	2.52	3.05	3.57	4.18	4.71	5.14
34	1.96	2.48	3.01	3.51	4.11	4.63	5.07
35	1.93	2.44	2.98	3.46	4.05	4.56	5.00
36	1.91	2.39	2.93	3.41	3.99	4.50	4.93
37	1.89	2.35	2.88	3.36	3.93	4.43	4.86
38	1.87	2.32	2.84	3.31	3.87	4.37	4.79
39	1.85	2.28	2.80	3.26	3.82	4.31	4.73
40	1.83	2.24	2.76	3.22	3.76	4.25	4.66
41	1.81	2.21	2.72	3.17	3.71	4.19	4.60
42	1.79	2.18	2.68	3.13	3.66	4.13	4.54
43	1.77	2.14	2.64	3.09	3.61	4.08	4.49
44	1.75	2.11	2.61	3.05	3.57	4.03	4.43
45	1.73	2.08	2.57	3.01	3.52	3.98	4.38

ATTACHMENT A CONTINUED
Page 2

<u>DURATION IN MINUTES</u>	<u>RETURN PERIODS OF</u>						
	<u>1-YR</u>	<u>2-YR</u>	<u>5-YR</u>	<u>10-YR</u>	<u>25-YR</u>	<u>50-YR</u>	<u>100-YR</u>
46	1.70	2.05	2.54	2.97	3.48	3.93	4.33
47	1.67	2.02	2.50	2.93	3.44	3.88	4.28
48	1.66	2.00	2.47	2.90	3.39	3.84	4.23
49	1.64	1.97	2.44	2.86	3.35	3.79	4.18
50	1.61	1.95	2.41	2.83	3.32	3.75	4.13
51	1.59	1.92	2.38	2.79	3.28	3.71	4.09
52	1.56	1.89	2.35	2.76	3.24	3.67	4.05
53	1.54	1.86	2.33	2.73	3.20	3.63	4.00
54	1.52	1.84	2.30	2.70	3.17	3.59	3.96
55	1.50	1.81	2.27	2.67	3.14	3.55	3.92
56	1.47	1.79	2.25	2.64	3.10	3.51	3.88
57	1.45	1.76	2.22	2.61	3.07	3.48	3.84
58	1.43	1.74	2.20	2.59	3.04	3.44	3.81
59	1.42	1.72	2.18	2.56	3.01	3.41	3.77
60	1.40	1.69	2.15	2.53	2.98	3.37	3.73
61	1.38	1.67	2.13	2.51	2.95	3.34	3.70
62	1.36	1.65	2.11	2.48	2.92	3.31	3.67
63	1.34	1.63	2.09	2.46	2.89	3.28	3.63
64	1.33	1.61	2.07	2.44	2.86	3.25	3.60
65	1.31	1.59	2.05	2.41	2.84	3.22	3.57
66	1.30	1.57	2.03	2.39	2.81	3.19	3.54
67	1.28	1.56	2.01	2.37	2.79	3.16	3.51
68	1.26	1.54	1.99	2.35	2.76	3.13	3.48
69	1.25	1.52	1.97	2.33	2.74	3.10	3.45
70	1.24	1.50	1.95	2.31	2.71	3.08	3.42
71	1.22	1.49	1.93	2.28	2.69	3.05	3.39
72	1.21	1.47	1.92	2.26	2.67	3.02	3.36
73	1.20	1.46	1.90	2.25	2.64	3.00	3.34
74	1.18	1.44	1.88	2.23	2.63	2.98	3.31
75	1.17	1.43	1.86	2.21	2.61	2.95	3.29
76	1.16	1.41	1.85	2.19	2.58	2.93	3.26
77	1.15	1.40	1.83	2.17	2.55	2.90	3.24
78	1.13	1.38	1.82	2.15	2.53	2.88	3.22
79	1.12	1.37	1.80	2.14	2.50	2.86	3.19
80	1.11	1.36	1.79	2.12	2.48	2.84	3.16
81	1.10	1.34	1.77	2.10	2.46	2.82	3.13
82	1.09	1.33	1.76	2.08	2.43	2.79	3.10
83	1.08	1.32	1.74	2.06	2.41	2.76	3.07
84	1.07	1.31	1.73	2.04	2.39	2.74	3.04
85	1.06	1.30	1.72	2.02	2.37	2.71	3.01
86	1.05	1.28	1.70	2.00	2.34	2.69	2.99
87	1.04	1.27	1.69	1.99	2.32	2.66	2.96
88	1.03	1.26	1.68	1.97	2.30	2.64	2.93
89	1.02	1.25	1.68	1.95	2.28	2.62	2.91
90	1.01	1.24	1.66	1.93	2.26	2.59	2.88

1.25

ATTACHMENT A CONTINUED
Page 3

<u>DURATION IN MINUTES</u>	<u>RETURN PERIODS OF</u>						
	<u>1-YR</u>	<u>2-YR</u>	<u>5-YR</u>	<u>10-YR</u>	<u>25-YR</u>	<u>50-YR</u>	<u>100-YR</u>
91	1.00	1.23	1.65	1.92	2.24	2.57	2.86
92	1.00	1.22	1.63	1.90	2.22	2.55	2.83
93	0.99	1.21	1.62	1.89	2.20	2.53	2.81
94	0.98	1.20	1.61	1.87	2.19	2.51	2.79
95	0.97	1.19	1.59	1.85	2.17	2.49	2.76
96	0.96	1.18	1.58	1.84	2.15	2.46	2.74
97	0.96	1.17	1.57	1.82	2.13	2.44	2.72
98	0.95	1.16	1.56	1.81	2.12	2.42	2.70
99	0.94	1.15	1.54	1.80	2.10	2.41	2.67
100	0.93	1.14	1.53	1.78	2.08	2.39	2.65
101	0.93	1.13	1.52	1.77	2.07	2.39	2.65
102	0.92	1.13	1.51	1.75	2.05	2.35	2.61
103	0.91	1.12	1.50	1.74	2.04	2.33	2.59
104	0.90	1.11	1.49	1.73	2.02	2.31	2.57
105	0.90	1.10	1.47	1.72	2.01	2.30	2.55
106	0.89	1.09	1.46	1.70	1.99	2.28	2.54
107	0.88	1.09	1.45	1.69	1.98	2.26	2.52
108	0.88	1.08	1.44	1.68	1.96	2.25	2.50
109	0.87	1.07	1.43	1.67	1.95	2.23	2.48
110	0.87	1.06	1.42	1.65	1.93	2.21	2.46
111	0.86	1.06	1.41	1.64	1.92	2.20	2.45
112	0.85	1.05	1.40	1.63	1.91	2.18	2.43
113	0.85	1.04	1.39	1.62	1.89	2.17	2.41
114	0.84	1.03	1.38	1.61	1.88	2.15	2.40
115	0.84	1.03	1.37	1.60	1.87	2.14	2.38
116	0.83	1.02	1.36	1.59	1.86	2.12	2.36
117	0.82	1.01	1.36	1.58	1.84	2.11	2.35
118	0.82	1.01	1.35	1.57	1.83	2.09	2.33
119	0.81	1.00	1.34	1.56	1.82	2.08	2.32
120	0.81	0.99	1.33	1.55	1.81	2.07	2.30

<u>DURATION IN HOURS</u>	<u>RETURN PERIODS OF</u>						
	<u>1-YR</u>	<u>2-YR</u>	<u>5-YR</u>	<u>10-YR</u>	<u>25-YR</u>	<u>50-YR</u>	<u>100-YR</u>
2	0.81	0.99	1.33	1.55	1.81	2.07	2.30
3	0.59	0.72	0.97	1.13	1.32	1.51	1.68
4	0.47	0.58	0.78	0.91	1.06	1.21	1.35
5	0.40	0.49	0.66	0.77	0.89	1.02	1.14
6	0.35	0.42	0.57	0.67	0.78	0.89	0.99
8	0.28	0.34	0.46	0.53	0.62	0.71	0.79
10	0.23	0.29	0.39	0.45	0.52	0.60	0.67
12	0.20	0.25	0.33	0.39	0.45	0.52	0.58
18	0.15	0.18	0.24	0.28	0.33	0.38	0.42
24	0.12	0.15	0.20	0.23	0.27	0.31	0.34

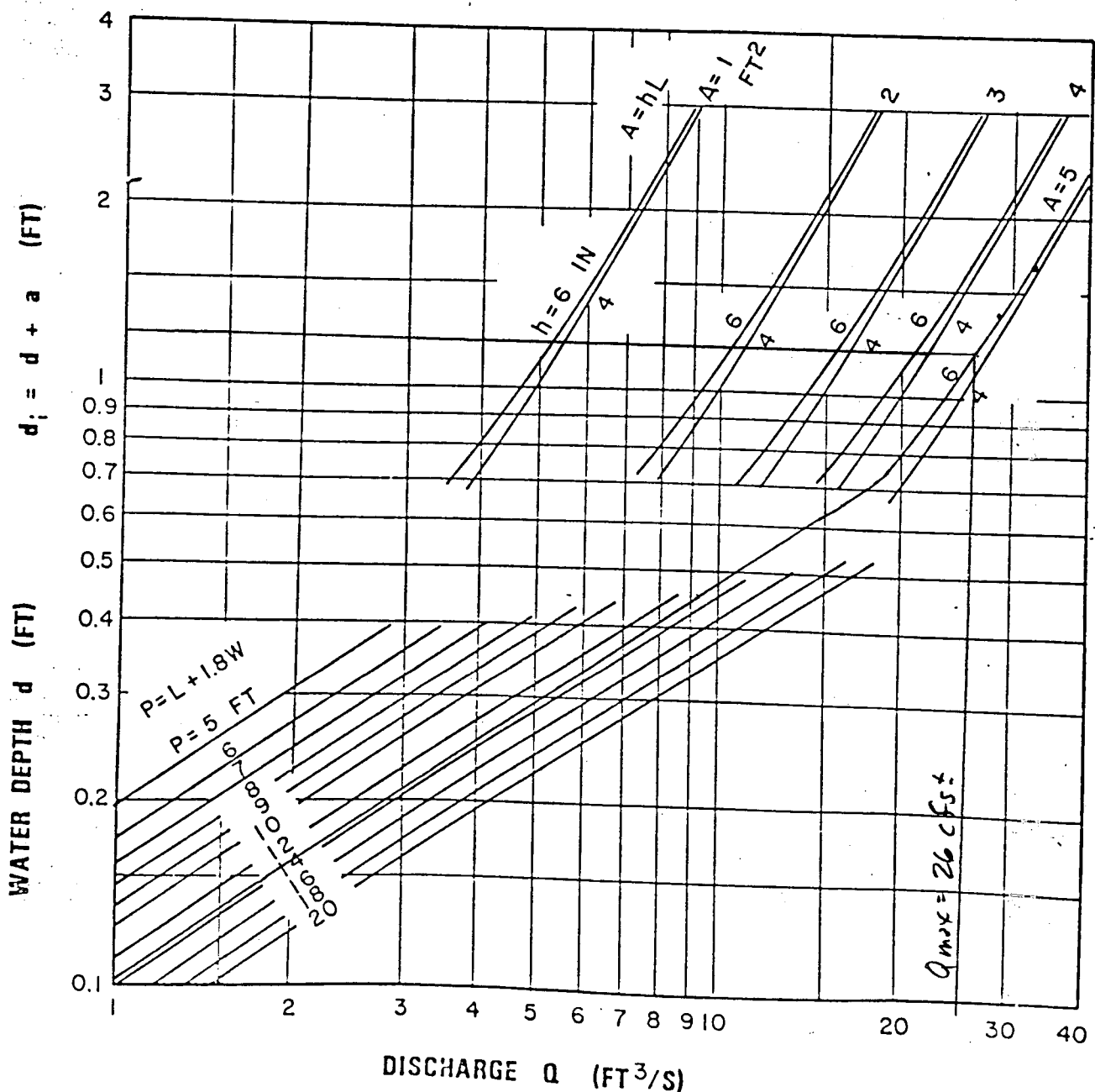
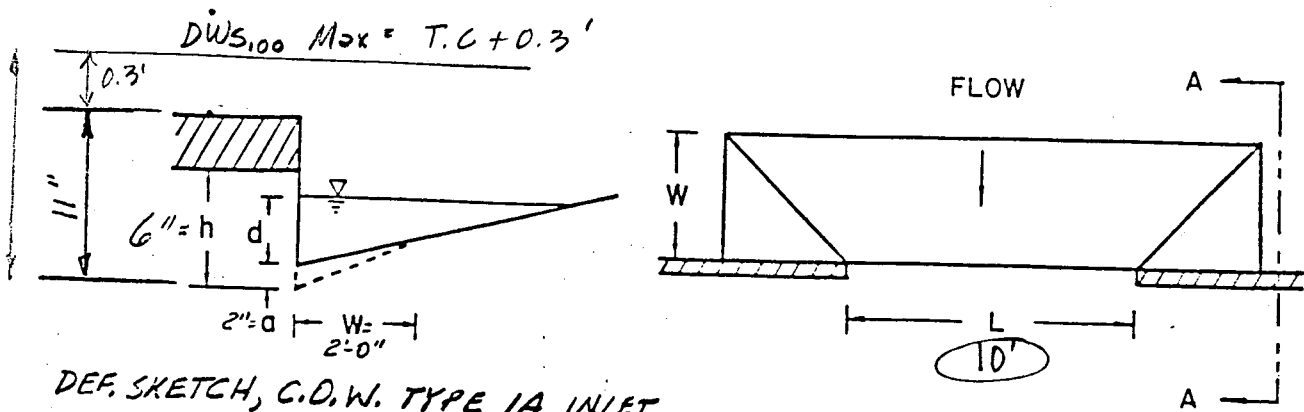


CHART 12. Depressed curb-opening inlet capacity in sump locations.

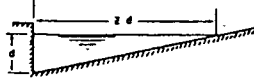
FROM: HEC-12, DRAINAGE OF HIGHWAY PAVEMENTS, F.H.W.A., MAR., 1974

$Z/n = 2000$

$x\text{-slope} = 3/8 \text{ "/ft}$

$n = 0.016$

Chart 1

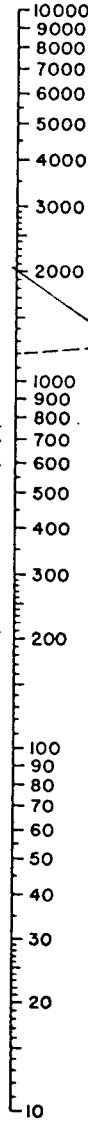


EQUATION: $Q = 0.56 \left(\frac{Z}{n}\right)^{3/2} d^{5/2}$
 n IS ROUGHNESS COEFFICIENT IN SIEMENS
 FORMULA APPROPRIATE TO MATERIAL IN
 BOTTOM OF CHANNEL
 Z IS RECIPROCAL OF CROSS SLOPE
 REFERENCE: H. R. B. PROCEEDINGS 1948,
 PAGE 150, EQUATION (14)

EXAMPLE (SEE INSTRUCTION 1)

GIVEN: $S = 0.03$
 $Z = 24$
 $n = .02$
 $Q = 20 \text{ CFS}$
 $Z/n = 1200$
 FIND: $d = 0.22$ BY FOLLOWING
 DASHED LINES

RATIO Z/n

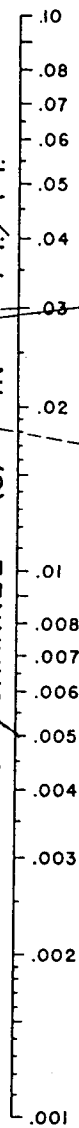


TURNING LINE

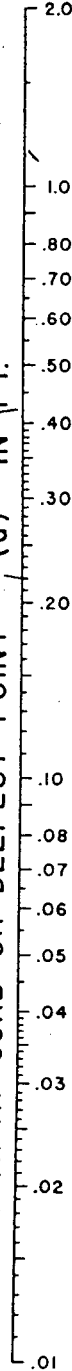


DISCHARGE (Q) IN CFS

SLOPE OF CHANNEL (S) IN FT./FT.



DEPTH AT CURB OR DEEPEST POINT (d) IN FT.



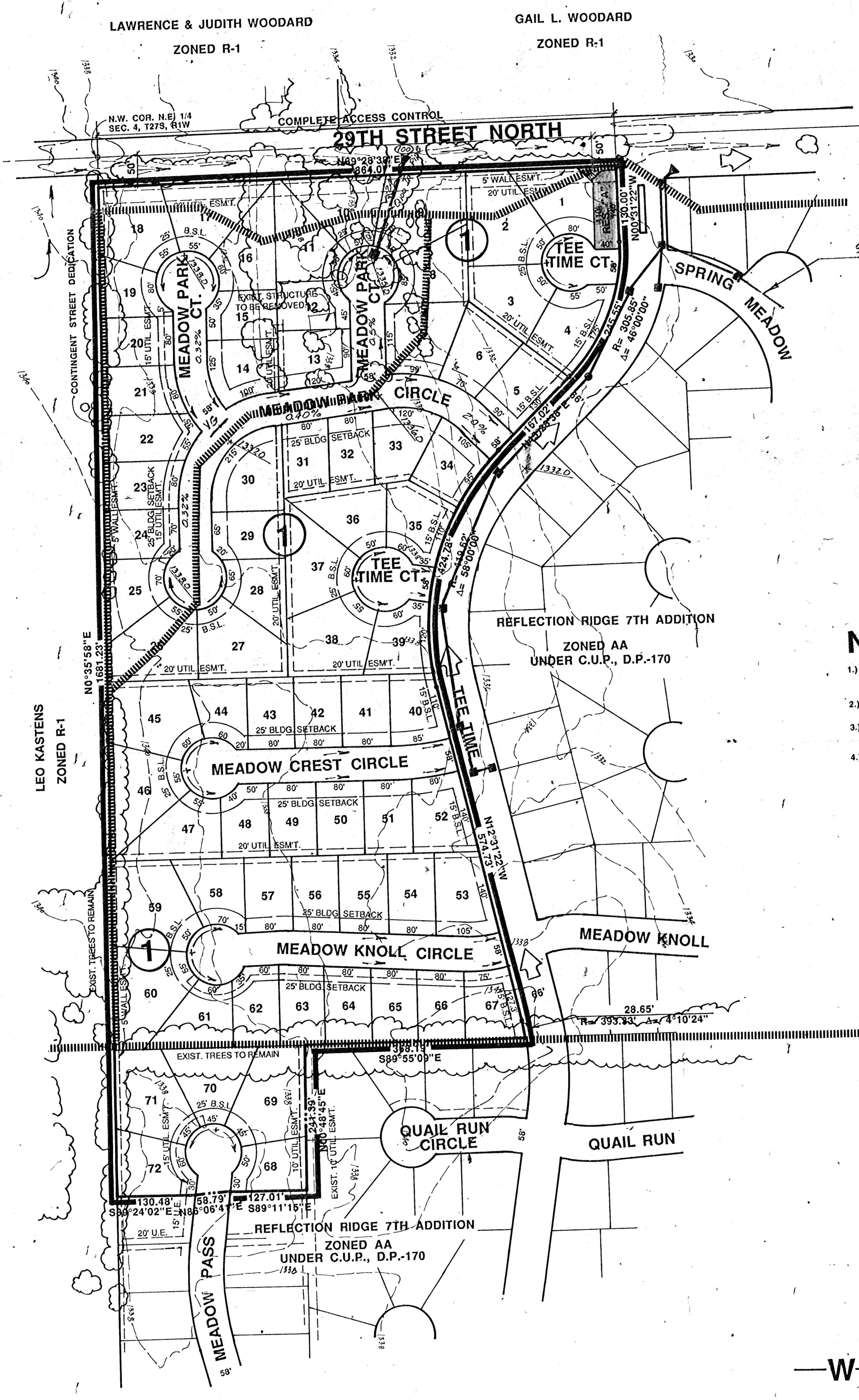
INSTRUCTIONS

1. CONNECT Z/n RATIO WITH SLOPE (S) AND CONNECT DISCHARGE (Q) WITH POINT WHERE LINE CROSSES TURNING LINE READ DEPTH AT CURB (d) Q CAN BE FOUND FROM d BY CONNECTING d WITH CROSSING OF TURNING LINE.

2. FOR SHALLOW V-SHAPED CHANNEL AS SHOWN USE NOMOGRAPH AS EXPLAINED IN INSTRUCTION 1 BUT WITH $Z = \frac{T}{d}$.

3. TO DETERMINE DISCHARGE Q_1 IN PORTION OF CHANNEL HAVING WIDTH b : DETERMINE DEPTH d FOR TOTAL DISCHARGE IN ENTIRE SECTION AS EXPLAINED IN 1. THEN USE NOMOGRAPH TO DETERMINE Q_2 IN SECTION OF WIDTH b FOR DEPTH $d' = d \left(\frac{b}{Z}\right)$ THEN $Q_1 = Q - Q_2$.

4. TO DETERMINE DISCHARGE (Q_1) IN COMPOSITE SECTION:-- FOLLOW INSTRUCTION 3. TO OBTAIN DISCHARGE (Q_2) IN SECTION a AT ASSUMED DEPTH d BASED ON AN EXTENSION OF SLOPE RATIO Z_0 TO INTERSECT WATER SURFACE; OBTAIN Q_3 FOR SLOPE RATIO Z_1 AND DEPTH d' ; $d' = d \cdot \frac{Z_0}{Z_1}$ THEN $Q_1 = Q_2 + Q_3$.



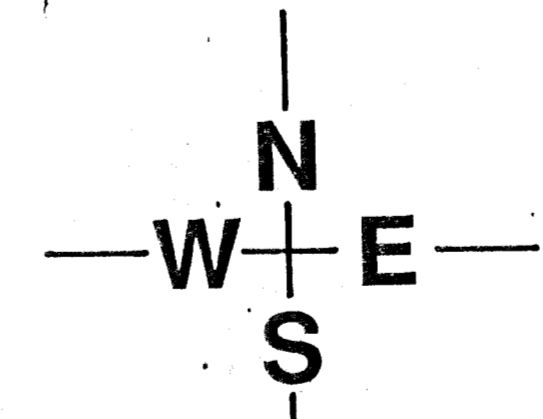
SEE REFLECTION RIDGE 7TH ADD DRAINAGE PLAN

LEGEND

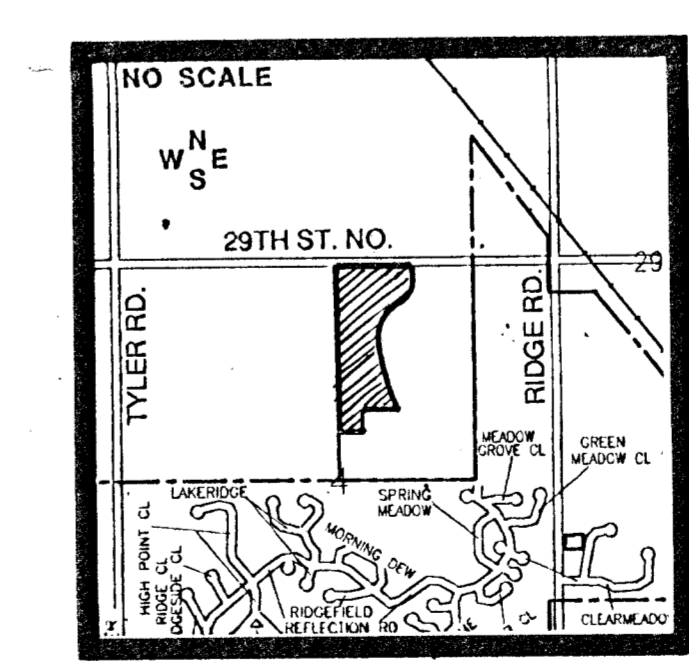
- Drainage Direction - Minor Storm
- ⇨ Drainage Direction - Major Storm
- ▤ Drainage Basin Boundary
- Prop. Storm Water Sewer & Inlet
- (100) Node Identification Point
- x 1332.0 Estimated Future Top Curb Elevation

NOTES:

- 1) BENCH MARK: CHISLED " " N.E. COR. 3-7'X3' RIB BRIDGE ON RIDGE RD. 175' NORTH OF S.E. COR. N.E.1/4, SEC. 4, T27S, R1W. ELEV. - 1325.64' M.S.L.
- 2) TOPOGRAPHY IS FROM AERIAL OBTAINED 15 DEC., 1990.
- 3) RESERVE "A" IS FOR LANDSCAPING, ENTRY MONUMENTS, WALLS AND UTILITIES.
- 4) CONTINGENT STREET DEDICATION. IF OWNER ACQUIRES ADJACENT PROPERTY ON THE WEST, MEADOW PARK CIRCLE WOULD BE EXTENDED TO THE WEST AND LOTS 14 AND 21 BLOCK 1 WOULD BE REPLACED WITH FUTURE PLAY FOR THE AREA TO THE WEST.



SCALE: 1"= 100'
CONTOUR INTERVAL= 2'



LOCATION MAP

PROFESSIONAL ENGINEERING CONSULTANTS, P.A.
ENGINEERS
WICHITA, KANSAS
Designed by C.S.B. Job No. Sht. / of /
Date 1-17-92



DRAINAGE PLAN

REFLECTION RIDGE 8TH ADD.

OWNER: REFLECTION RIDGE INC., 7926 W. 21ST STREET NORTH, WICHITA, KANSAS 67212 PH: 316-721-2153