

REFLECTION RIDGE 7TH & 8TH ADDITIONS TO WICHITA, SEDGWICK COUNTY, KANSAS

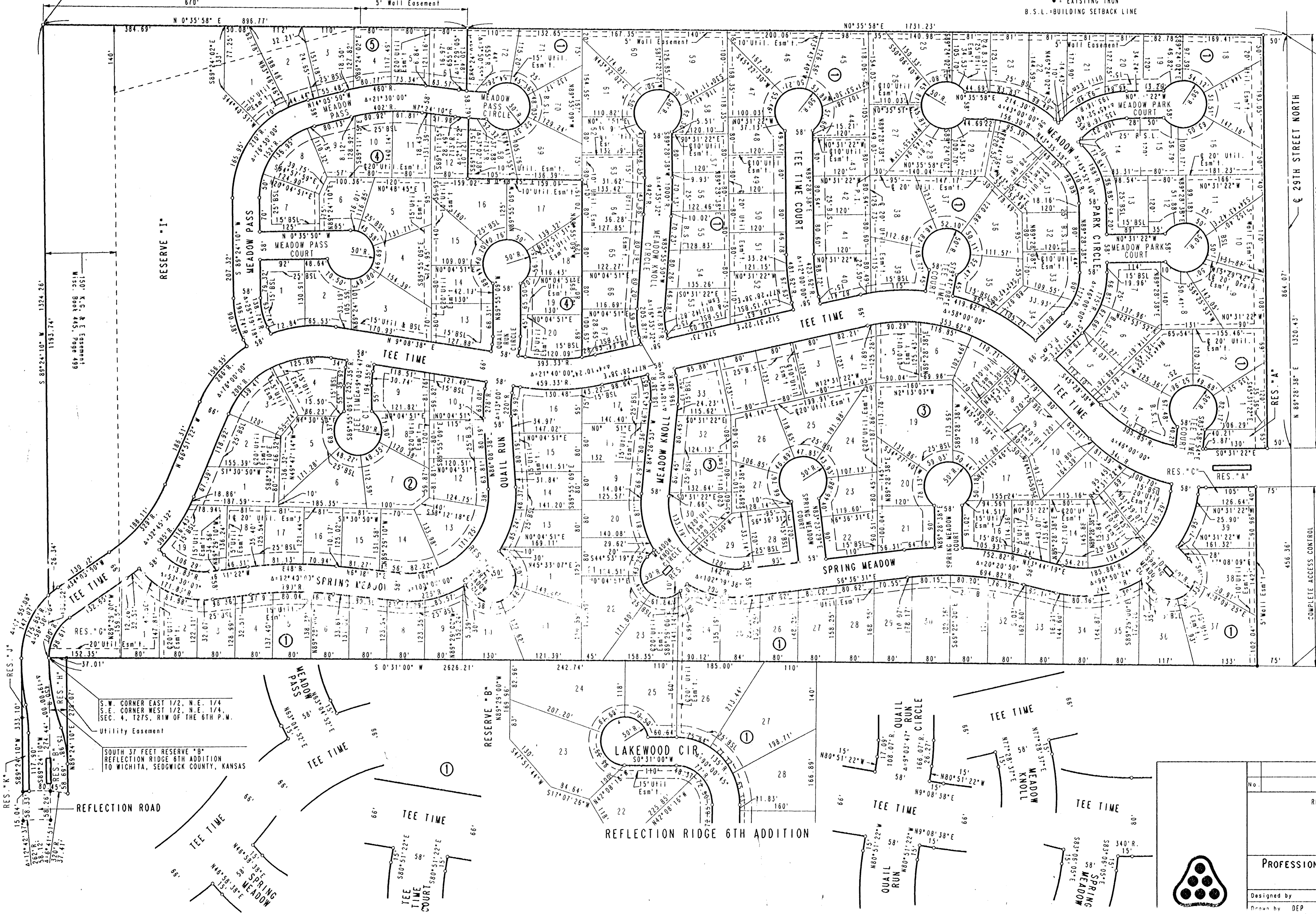
SCALE: 1"=100'
 ○ IRON SET
 ● EXISTING IRON
 B.S.L. - BUILDING SETBACK LINE

B.M. CHISELED "X" N.E. CORNER 3-7'x3' RCB BRIDGE ON RIDGE ROAD 175 FEET NORTH OF S.E. CORNER N.E. 1/4, T27S, R1W ELEV. +1325.64 W.S.L. ELEV. +138.46 CITY DATUM

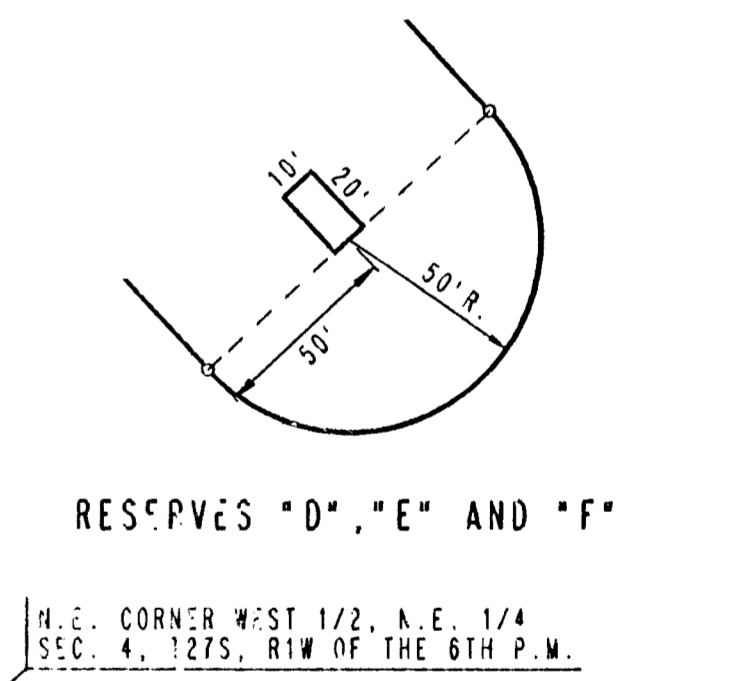
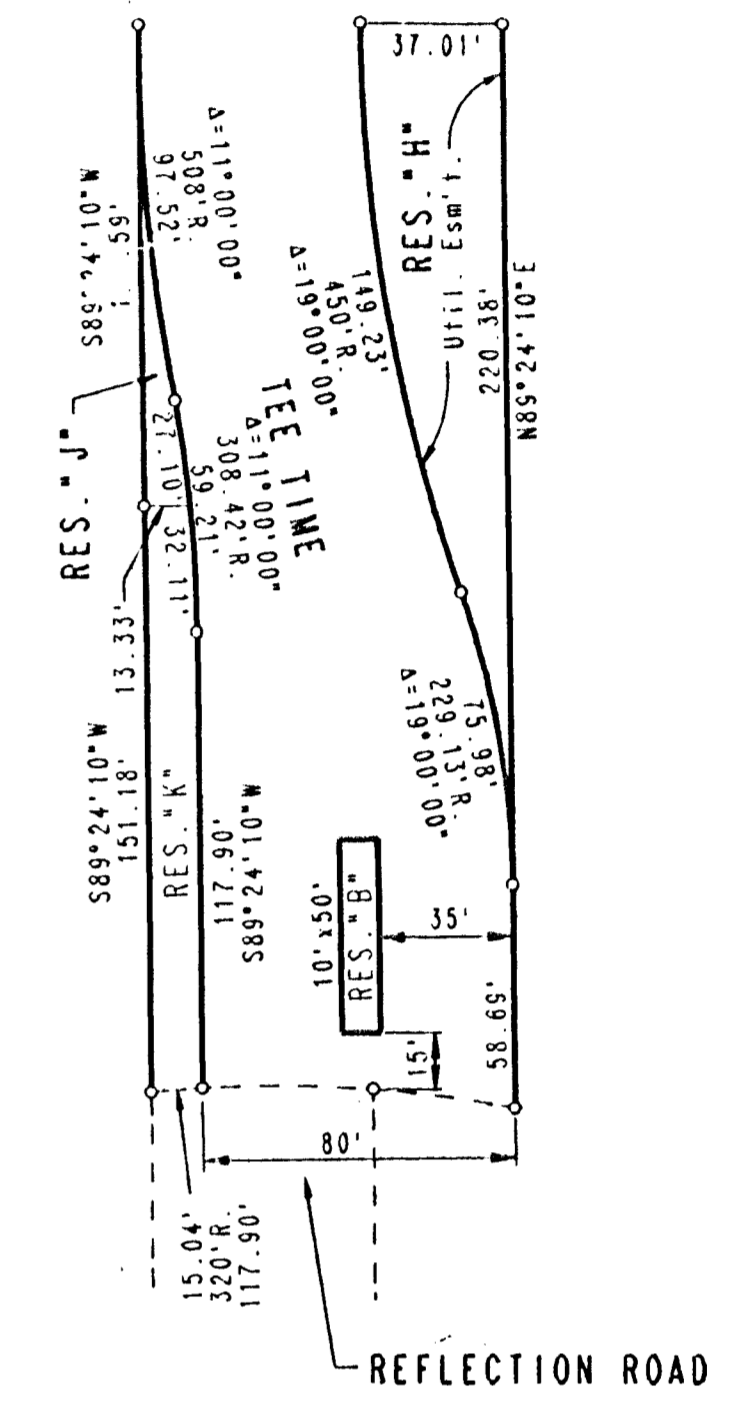
S.W. CORNER N.E. 1/4 SEC. 4, T27S, R1W OF THE 6TH P.W.

N.W. CORNER N.E. 1/4 SEC. 4, T27S, R1W OF THE 6TH P.W.

N.E. CORNER WEST 1/2, S.E. 1/4 SEC. 4, T27S, R1W OF THE 6TH P.W.



NO.	DATE	BY	REVISION
1			AS PER CITY RECORD
2			AS PER CITY RECORD
3			AS PER CITY RECORD
4			AS PER CITY RECORD
5			AS PER CITY RECORD
6			AS PER CITY RECORD
7			AS PER CITY RECORD
8			AS PER CITY RECORD
9			AS PER CITY RECORD
10			AS PER CITY RECORD



No.	Revision	By	Date
REFLECTION RIDGE 7TH & 8TH ADDITION			
PLAT			
PROFESSIONAL ENGINEERING CONSULTANTS, P.A.			
ENGINEERS WICHITA, KANSAS			
Designed by	Job No.		
Drawn by DEP	Date	JUNE, 1932	Sht. of

