



**MUNICIPAL ENGINEERS, P.A.**  
Civil Engineers & Land Surveyors

254 Laura, Suite 201 • Wichita, Kansas 67211 • (316) 262-3842 • Fax (316) 262-8634

August 23, 1994

Vicki Huang, P.E.  
City Engineer's Office  
City Hall - 7th Floor  
455 North Main Street  
Wichita, Kansas 67202

Re: Construction Cost Estimates  
Street & Water Improvements  
Smithmoor 4th Addition

Dear Ms. Huang:

Attached please find construction cost estimates for referenced improvements for your review. I am sending a copy of water improvement estimate to Mr. Rob Younkin.

I will prepare petitions for these improvements after receiving your comments.

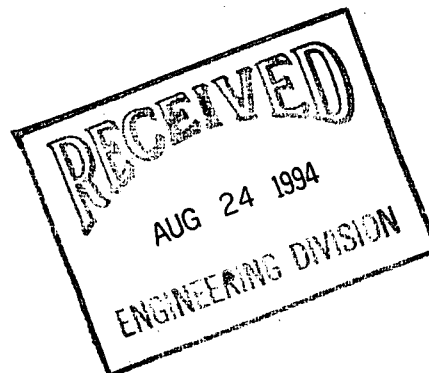
Petition for storm sewer improvements was submitted with Smithmoor Third Addition plat and should be active.

Sincerely,  
MUNICIPAL ENGINEERS, P.A.

A handwritten signature in black ink, appearing to be 'B. Khan', written over a horizontal line.

Babar M. Khan, P.E.

CC: Mr. Rob Younkin



**ME** MUNICIPAL ENGINEERS, P.A.  
Civil Engineers & Land Surveyors

254 Laura, Suite 201 • Wichita, Kansas 67211 • (316) 262-3842 • Fax (316) 262-8634

PRELIMINARY ESTIMATE OF CONSTRUCTION COST

SMITHMOOR FOURTH ADDITION  
TO  
WICHITA, KANSAS  
August 23, 1994

ITEM	QUANTITY	UNIT PRICE \$	EXTENSION \$
7"-A.C. Pvmt.	3,300 s.y.	12.50/s.y.	41,250
7"-Reinf. V.G.	170 s.y.	35.00/s.y.	5,950
Comb. C&G	2,040 l.f.	10.00/l.f.	20,400
Mono Edge Curb	188 l.f.	8.00/l.f.	1,504
2-1/2" Bit. Base	610 s.y.	4.00/s.y.	2,440
Excavation	2,400 c.y.	4.00/c.y.	9,600
Subgrade Manipulation	4,100 s.y.	2.00/s.y.	8,200
Lime	50 tons	80.00/ton	4,000

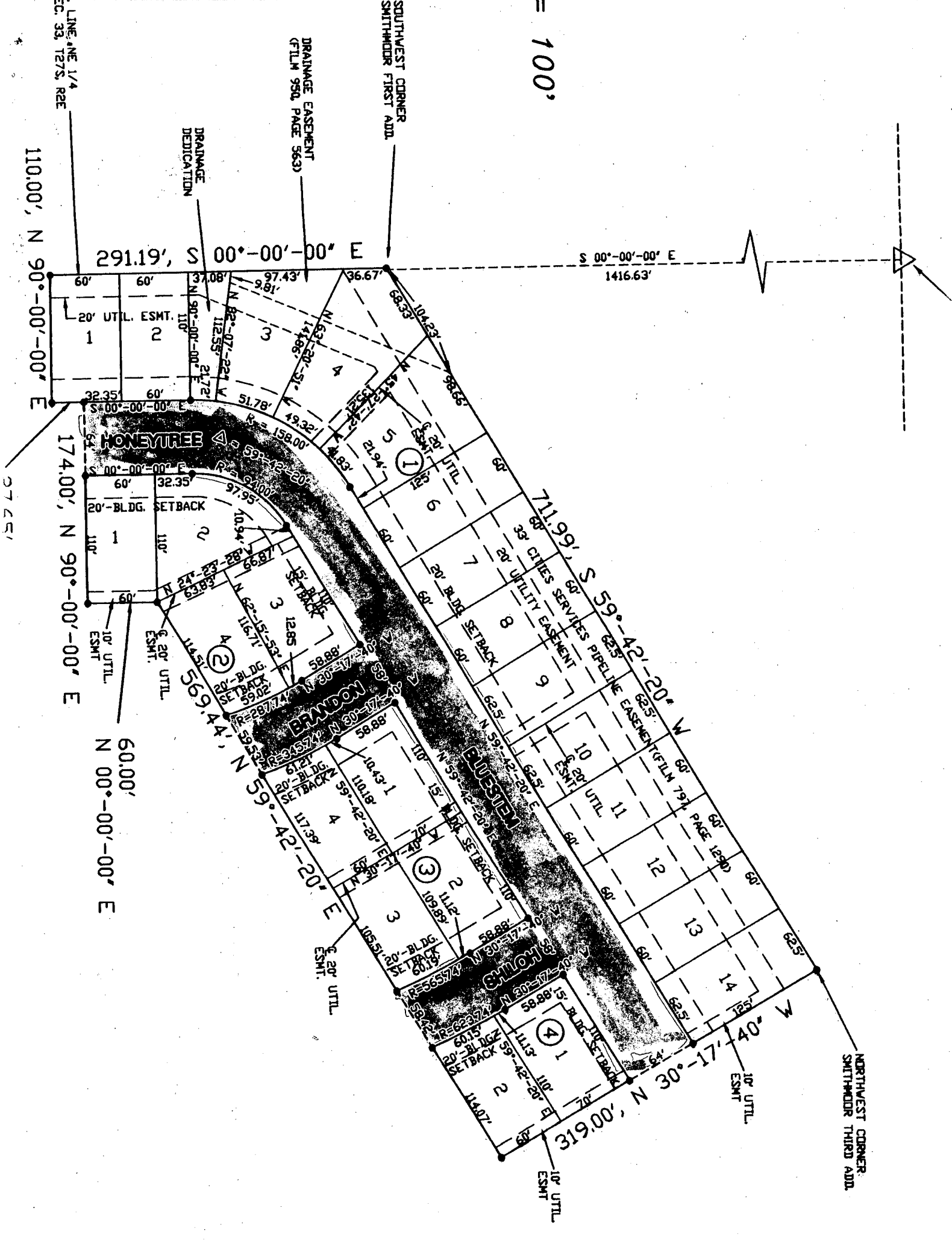
SUBTOTAL 93,344

Const. Contingencies (10 %) 9,334

Engineering, Admin. & Misc (25%) 25,622

ESTIMATED PROJECT COST \$ 128,300

100'



LINE ONE 1/4  
 SEC. 33, T27S, R2E

110.00', N 90°-00'-00" E

174.00', N 90°-00'-00" E

60.00', N 00°-00'-00" E

27.25'

291.19', S 00°-00'-00" E

1416.63' S 00°-00'-00" E

174.00', N 90°-00'-00" E

569.44', N 59°-42'-20" W

60.00', N 00°-00'-00" E

319.00', N 30°-17'-40" W

10' UTIL. ESMT.

10' UTIL. ESMT.

10' UTIL. ESMT.

DRAINAGE DEDICATION

DRAINAGE EASEMENT (FILM 950, PAGE 563)

SOUTHWEST CORNER SMITHWIDER FIRST ADD.

20' UTIL. ESMT.

20' BLDG. SETBACK

20' BLDG. SETBACK

20' BLDG. SETBACK

20' BLDG. SETBACK

20' BLDG. SETBACK

20' BLDG. SETBACK

20' BLDG. SETBACK

20' BLDG. SETBACK

20' BLDG. SETBACK

20' BLDG. SETBACK

20' BLDG. SETBACK

20' BLDG. SETBACK

20' BLDG. SETBACK

20' BLDG. SETBACK

20' UTIL. ESMT.

20' UTIL. ESMT.

20' UTIL. ESMT.

20' UTIL. ESMT.

20' UTIL. ESMT.

20' UTIL. ESMT.

20' UTIL. ESMT.

20' UTIL. ESMT.

20' UTIL. ESMT.

20' UTIL. ESMT.

20' UTIL. ESMT.

20' UTIL. ESMT.

20' UTIL. ESMT.

20' UTIL. ESMT.

20' UTIL. ESMT.

20' UTIL. ESMT.

20' UTIL. ESMT.

20' UTIL. ESMT.

20' UTIL. ESMT.

20' UTIL. ESMT.

20' UTIL. ESMT.

20' UTIL. ESMT.

20' UTIL. ESMT.

20' UTIL. ESMT.

20' UTIL. ESMT.

20' UTIL. ESMT.

20' UTIL. ESMT.

20' UTIL. ESMT.

20' UTIL. ESMT.

20' UTIL. ESMT.

20' UTIL. ESMT.

20' UTIL. ESMT.

20' UTIL. ESMT.

20' UTIL. ESMT.

20' UTIL. ESMT.

20' UTIL. ESMT.

20' UTIL. ESMT.

20' UTIL. ESMT.

20' UTIL. ESMT.

20' UTIL. ESMT.

20' UTIL. ESMT.

20' UTIL. ESMT.

20' UTIL. ESMT.

20' UTIL. ESMT.

20' UTIL. ESMT.

20' UTIL. ESMT.

20' UTIL. ESMT.

20' UTIL. ESMT.

20' UTIL. ESMT.

20' UTIL. ESMT.

20' UTIL. ESMT.

20' UTIL. ESMT.

20' UTIL. ESMT.

20' UTIL. ESMT.

20' UTIL. ESMT.

20' UTIL. ESMT.

20' UTIL. ESMT.

20' UTIL. ESMT.

20' UTIL. ESMT.

20' UTIL. ESMT.

20' UTIL. ESMT.

20' UTIL. ESMT.

20' UTIL. ESMT.

20' UTIL. ESMT.

20' UTIL. ESMT.

20' UTIL. ESMT.

20' UTIL. ESMT.

20' UTIL. ESMT.

20' UTIL. ESMT.

20' UTIL. ESMT.

20' UTIL. ESMT.

20' UTIL. ESMT.

20' UTIL. ESMT.

20' UTIL. ESMT.

20' UTIL. ESMT.

20' UTIL. ESMT.

20' UTIL. ESMT.

20' UTIL. ESMT.

20' UTIL. ESMT.

20' UTIL. ESMT.

20' UTIL. ESMT.

20' UTIL. ESMT.

20' UTIL. ESMT.

20' UTIL. ESMT.

20' UTIL. ESMT.

20' UTIL. ESMT.

20' UTIL. ESMT.

20' UTIL. ESMT.

20' UTIL. ESMT.

20' UTIL. ESMT.

20' UTIL. ESMT.

20' UTIL. ESMT.

20' UTIL. ESMT.

20' UTIL. ESMT.

20' UTIL. ESMT.

20' UTIL. ESMT.

20' UTIL. ESMT.

20' UTIL. ESMT.

20' UTIL. ESMT.

20' UTIL. ESMT.

20' UTIL. ESMT.

20' UTIL. ESMT.

20' UTIL. ESMT.

20' UTIL. ESMT.

20' UTIL. ESMT.

20' UTIL. ESMT.

20' UTIL. ESMT.

20' UTIL. ESMT.

20' UTIL. ESMT.

20' UTIL. ESMT.

20' UTIL. ESMT.

20' UTIL. ESMT.

20' UTIL. ESMT.

20' UTIL. ESMT.

20' UTIL. ESMT.

20' UTIL. ESMT.

20' UTIL. ESMT.

20' UTIL. ESMT.

20' UTIL. ESMT.

20' UTIL. ESMT.

20' UTIL. ESMT.

20' UTIL. ESMT.

20' UTIL. ESMT.

20' UTIL. ESMT.

20' UTIL. ESMT.

20' UTIL. ESMT.

20' UTIL. ESMT.

20' UTIL. ESMT.

20' UTIL. ESMT.

20' UTIL. ESMT.

20' UTIL. ESMT.

20' UTIL. ESMT.

20' UTIL. ESMT.

20' UTIL. ESMT.

20' UTIL. ESMT.

20' UTIL. ESMT.

20' UTIL. ESMT.

20' UTIL. ESMT.

20' UTIL. ESMT.

20' UTIL. ESMT.

20' UTIL. ESMT.

20' UTIL. ESMT.

20' UTIL. ESMT.

20' UTIL. ESMT.

**ME** MUNICIPAL ENGINEERS, P.A.  
Civil Engineers & Land Surveyors

254 Laura, Suite 201 • Wichita, Kansas 67211 • (316) 262-3842 • Fax (316) 262-8634

PRELIMINARY ESTIMATE OF CONSTRUCTION COST

WATER SYSTEM IMPROVEMENTS

SMITHMOOR FOURTH ADDITION  
TO  
WICHITA, KANSAS  
August 23, 1994

ITEM	QUANTITY	UNIT PRICE \$	EXTENSION \$
8"-Water Pipe	850 l.f.	25.00/l.f.	21,250
6"-Water Pipe	370 l.f.	20.00/l.f.	7,400
8"-Valve Assembly	1 each	800.00/each	800
6"-Valve Assembly	2 each	600.00/each	1,200
Fire Hydrant Assembly	2 each	2,000.00/each	4,000

SUBTOTAL 34,650

Engineering, Admin. & Misc (30%) 10,450

ESTIMATED PROJECT COST \$ 45,100

