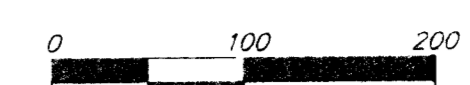


DRAINAGE CONCEPT HIGHLAND SPRINGS WICHITA, SEDGWICK COUNTY, KANSAS

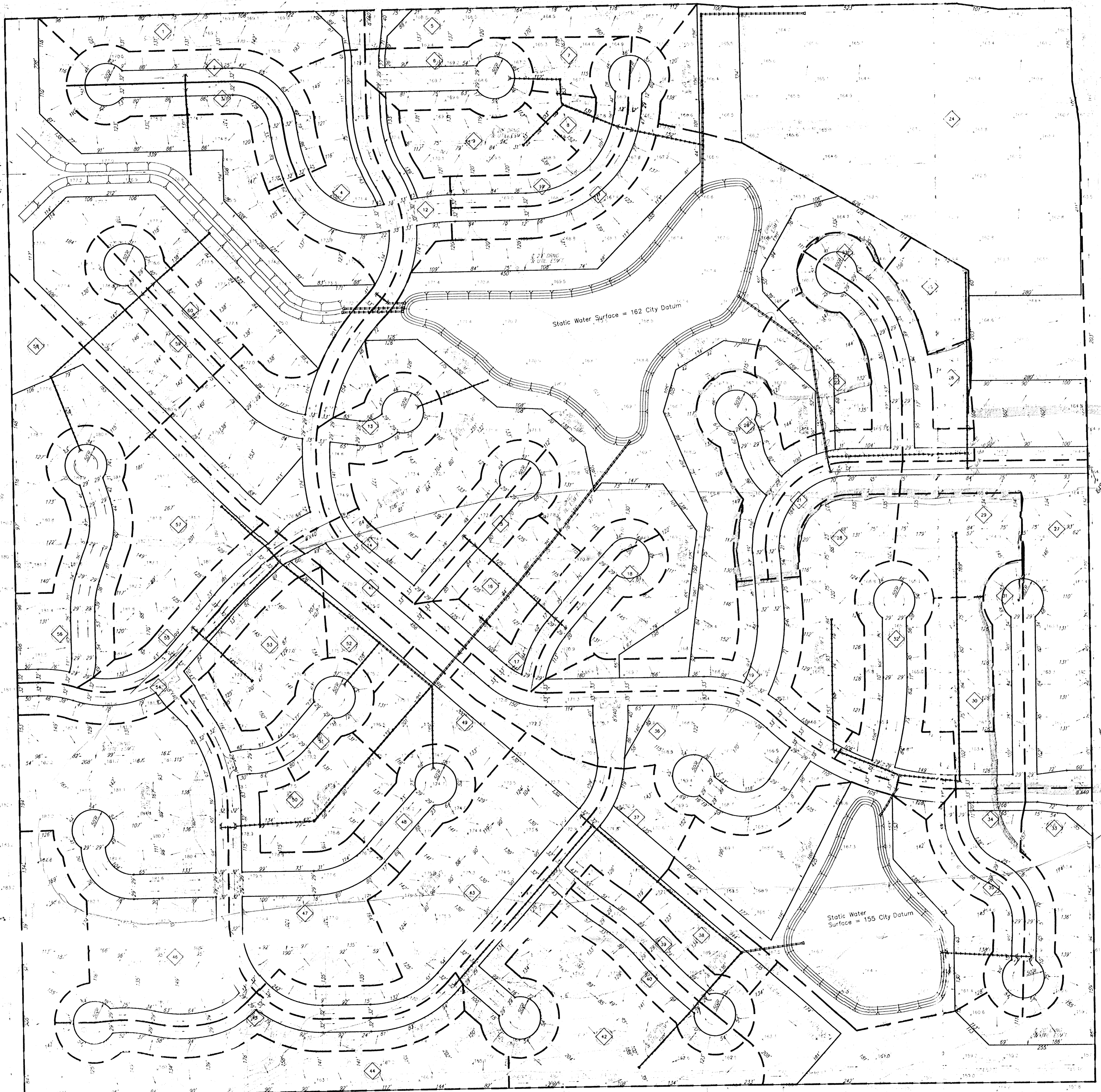
1/4 REBAR W/ "BAUGHMAN" CAP (SET)

CONTOUR INTERVAL = 2 FEET



NE COR. NE 1/4, SEC. 21
T-27-S, R-2-W

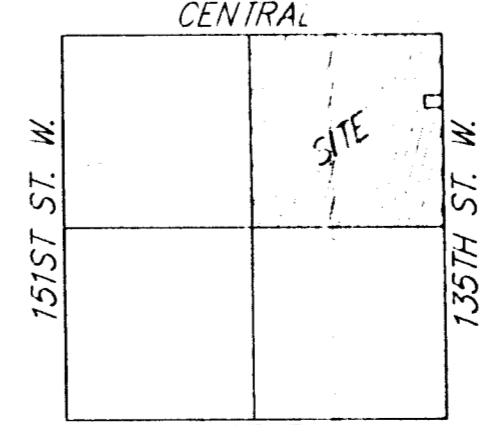
Off-Site Flow
D.A. = 69 ac.
Q₂ = 92 cfs
Q₅ = 110 cfs
Q₁₀₀ = 180 cfs



SW COR. NE 1/4, SEC. 21
T-27-S, R-2-W

SE COR. NE 1/4, SEC. 21
T-27-S, R-2-W

Basin ID	Area ac-ft	02	05	08	10	100
1	1.5	0.5	0.5	0.5	0.5	0.5
2	1.5	0.54	0.5	0.5	0.5	0.5
3	1.2	0.54	0.5	0.5	0.5	0.5
4	4.0	0.54	0.5	0.5	0.5	0.5
5	1.4	0.5	0.5	0.5	0.5	0.5
6	1.1	0.54	0.5	0.5	0.5	0.5
7	0.5	0.5	0.5	0.5	0.5	0.5
8	0.5	0.5	0.5	0.5	0.5	0.5
9	1.1	0.54	0.5	0.5	0.5	0.5
10	1.2	0.54	0.5	0.5	0.5	0.5
11	1.4	0.54	0.5	0.5	0.5	0.5
12	1.4	0.54	0.5	0.5	0.5	0.5
13	2.8	0.5	0.5	0.5	0.5	0.5
14	1.2	0.5	0.5	0.5	0.5	0.5
15	0.8	0.5	0.5	0.5	0.5	0.5
16	1.0	0.54	0.5	0.5	0.5	0.5
17	1.3	0.54	0.5	0.5	0.5	0.5
18	0.9	0.5	0.5	0.5	0.5	0.5
19	2.1	0.54	0.5	0.5	0.5	0.5
20	2.8	0.54	0.5	0.5	0.5	0.5



MAPLE
VICINITY MAP

PHOTOGRAMMETRY BY
MILES AIR PHOTO SURVEY
455 MAIN ST., SUITE 1
CANNON CITY, CO. 81212
PH (719) 215-4599

BAUGHMAN COMPANY P.A.
ENGINEERING, SURVEYING, & PLANNING
(316)-262-7271 • 319 ELLIS • WICHITA, KANSAS 67211

21 MARCH 1997