

# DRAINAGE PLAN

## R & L CARPENTER 3RD ADDITION

### WICHITA, SEDGWICK COUNTY, KANSAS

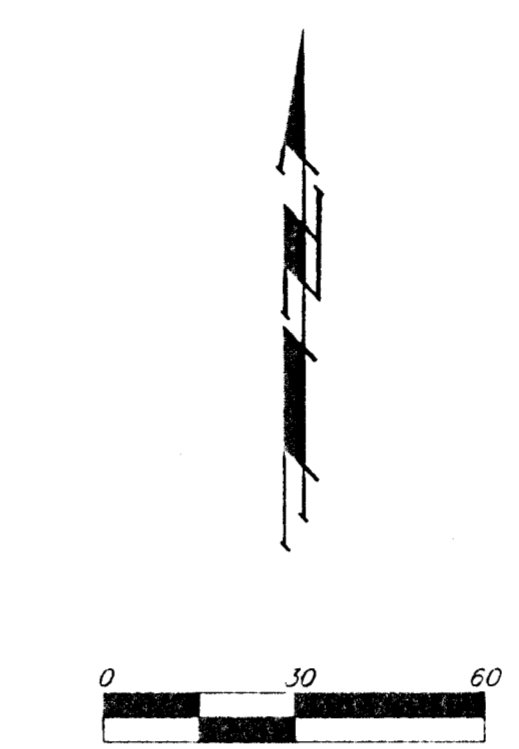
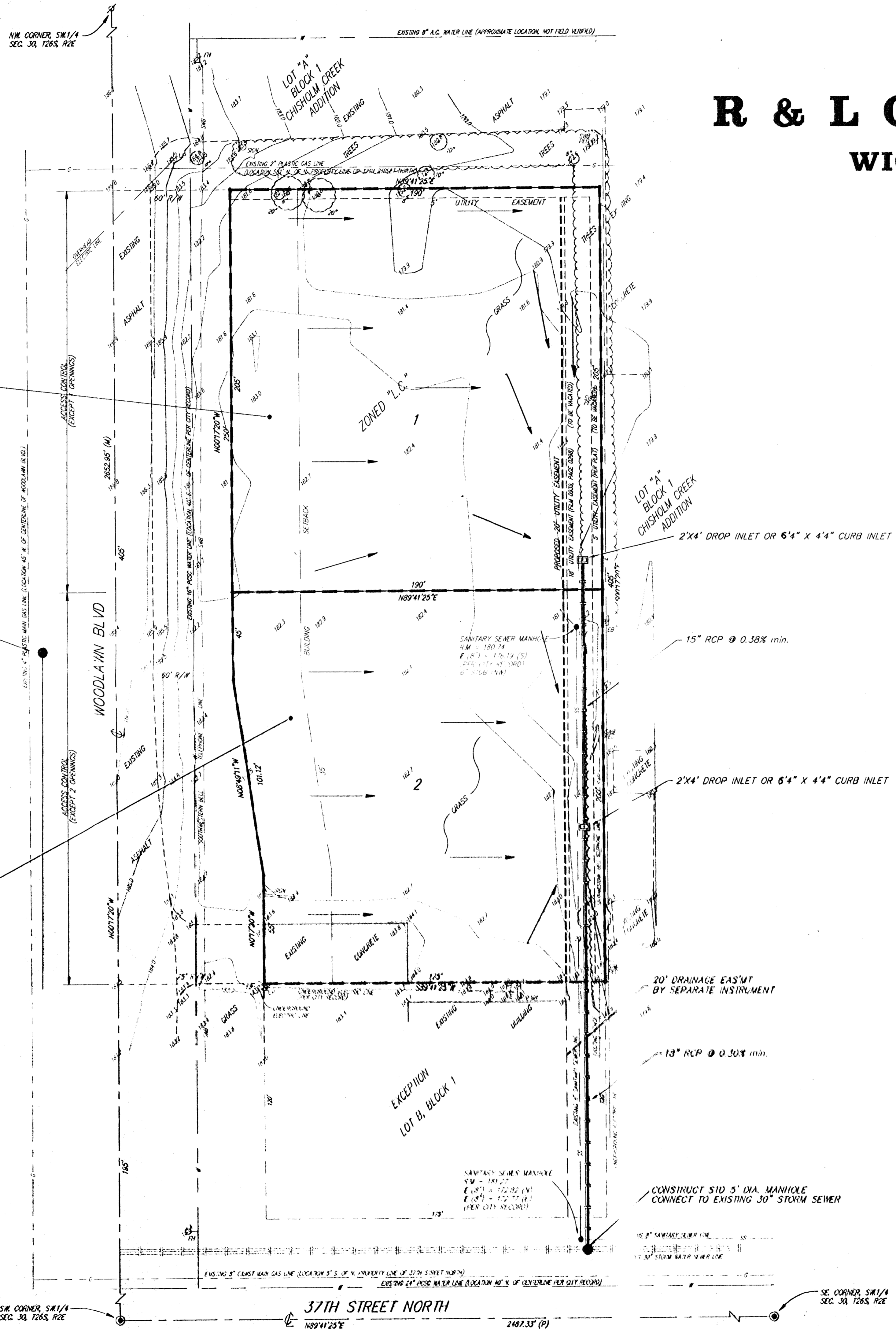
**OWNER:**  
 WILLIAM J. OLIVER, JR.  
 200 W. DOUGLAS  
 WICHITA, KANSAS 67211  
 (316) 265-9311

**CONTRACT PURCHASER:**  
 ROGER CARPENTER  
 R & L CARPENTER ENTERPRISES, L.L.C.  
 P.O. BOX 1207  
 COFFEYVILLE, KANSAS 67337  
 (316) 251-7720

**BENCH MARK:**  
 WOODLAWN AND 37TH ST NORTH  
 CITY OF WICHITA BENCH MARK - CITY DISC  
 SOUTHEAST CORNER INTERSECTION  
 75.7' EAST AND 56.3' SOUTH  
 OF CENTER LINE BOTH.  
 ELEVATION = 183.04 (CITY DATUM)

Existing Conditions	Developed Conditions
Area = 0.9 acres	Area = 0.9 acres
Tc = 15 min.	Tc = 15 min.
Cc = 0.4	Cc = 0.9
Q <sub>1</sub> = 1.4 cfs	Q <sub>1</sub> = 3.1 cfs
Q <sub>10</sub> = 1.9 cfs	Q <sub>10</sub> = 4.2 cfs
Q <sub>100</sub> = 2.7 cfs	Q <sub>100</sub> = 6.0 cfs

Existing Conditions	Developed Conditions
Area = 0.8 acres	Area = 0.8 acres
Tc = 15 min.	Tc = 15 min.
Cc = 0.4	Cc = 0.9
Q <sub>1</sub> = 1.2 cfs	Q <sub>1</sub> = 2.8 cfs
Q <sub>10</sub> = 1.7 cfs	Q <sub>10</sub> = 3.8 cfs
Q <sub>100</sub> = 2.4 cfs	Q <sub>100</sub> = 5.3 cfs



- LEGEND:**
- = MEASURED DISTANCE
  - (M) = MEASURED DISTANCE
  - (P) = PLATTED DISTANCE
  - = #4 REBAR W/ "BAUGHMAN" CAP (SET)
  - = 1/2" IRON (FOUND)
  - ∇ = "V" NOTCH (FOUND)
  - ⊙ = 3/4" IRON IN THIMBLE (FOUND)
  - ⊗ = 5/8" REBAR W/ "CARPENTER" CAP (FOUND)
  - ⊘ = LIGHT POLE
  - = SANITARY SEWER MANHOLE
  - ⊞ = SOUTHWESTERN BELL TELEPHONE Poles
  - ⊙ = TREE

MINIMUM BUILDING PAD ELEVATION FOR LOWEST OPENING TO STRUCTURE:

LOT(S)	ELEVATION (PER CITY DATUM)
1 & 2	173.00

