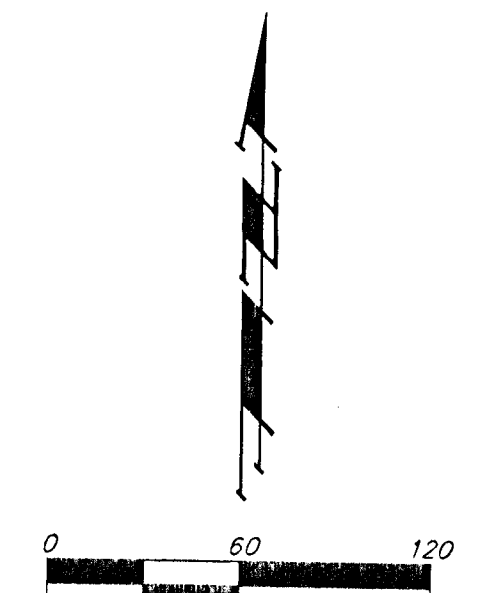
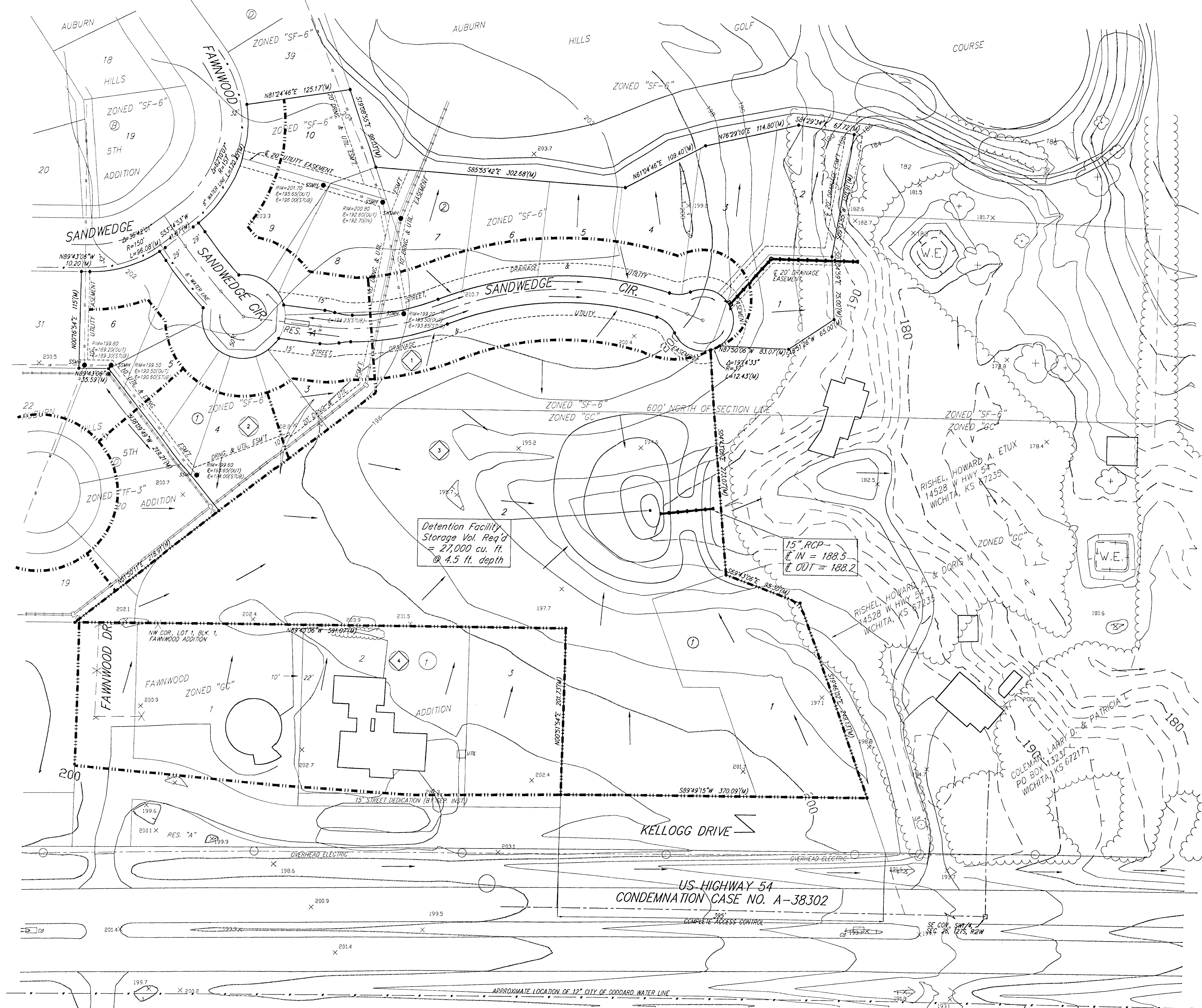


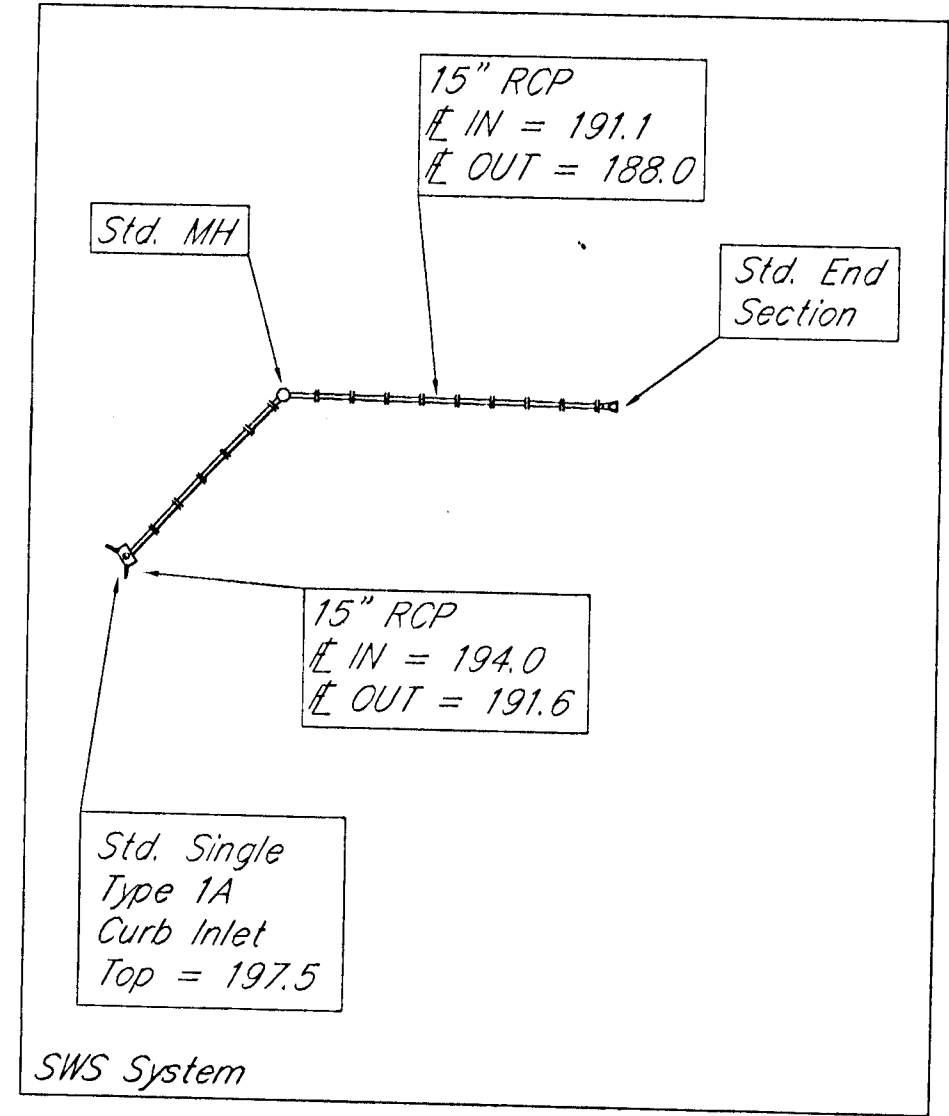
DRAINAGE PLAN AUBURN HILLS 11TH ADDITION WICHITA, SEDGWICK COUNTY, KANSAS



- = #4 REBAR W/ "BAUGHMAN" CAP (SET)
- = SECTION CORNER (FOUND)
- (M) = MEASURED
- (D) = DESCRIBED
- (P) = PLATTED

NOTE: A MASTER GRADING PLAN FOR DRAINAGE HAS BEEN DEVELOPED FOR THIS SUBDIVISION AND IS ON FILE WITH THE CITY OF WICHITA, KANSAS. ALL DRAINAGE EASEMENTS, RIGHTS-OF-WAY, OR RESERVES SHALL REMAIN AT ESTABLISHED GRADES OR AS MODIFIED WITH THE APPROVAL OF THE CITY ENGINEER OF THE CITY OF WICHITA, KANSAS. NO OBSTRUCTIONS WHICH IMPEDE THE FLOW OF THIS DRAINAGE SYSTEM SHALL BE ALLOWED.

BENCHMARK:
TOP OF 1" IRON, 12" DEEP, W/4 COR., SEC. 26, TWP. 21-S, R-2-W. ELEV. = 1396.53 M.S.L. (209.13 CITY DATUM)



Hydrologic Data:
"C" coefficients based on
Hydrologic soil type C

Drainage Area	Area (Acres)	C ₁	C ₂	T _s (min)	C _u (hr)	C _o (hr)	C ₂ (hr)	C ₂ (hr)
1	1.3	0.48	0.68	15	3.83	7.37	2.4	6.5
2	0.9	0.48	0.68	15	3.83	7.37	1.6	4.5
3	6.0	0.68	0.83	15	3.83	7.37	16	37
4	2.8	0.68	0.83	15	3.83	7.37	8.8	16

Detention Facility
Storage Vol. Req'd
= 27,000 cu. ft.
@ 4.5 ft. depth

15" RCP
I IN = 188.5
I OUT = 188.2

NOTE: The proposed drainage plan provided herein is a generally defined plan to follow for design. It is recognized and assumed that upon the final design of street and storm sewer improvements within this plot that the designer will modify or alter the general drainage plan as necessary in order to implement the installation of the improvements to obtain the most economical design and construction possible.