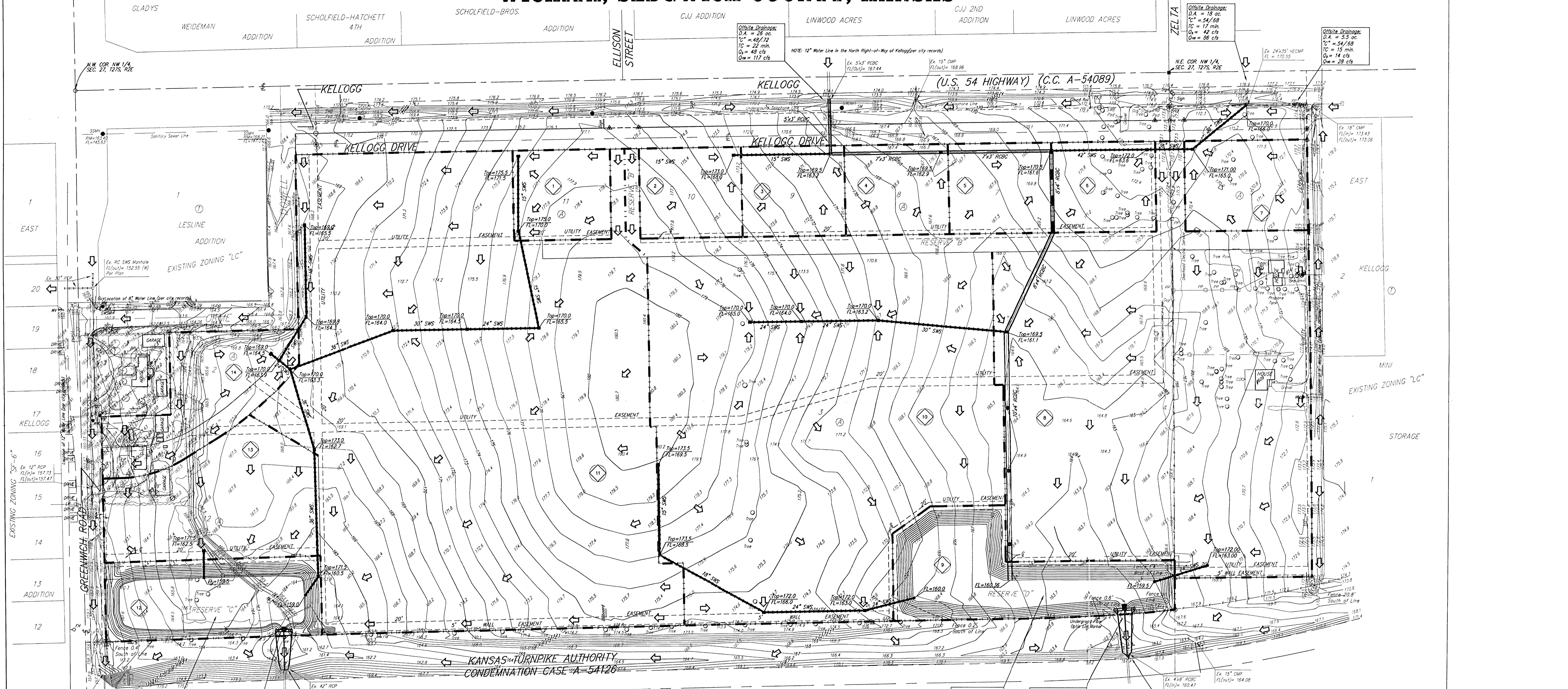


DRAINAGE PLAN

ONE KELLOGG PLACE 2ND ADDITION

WICHITA, SEDGWICK COUNTY, KANSAS



Drainage Area (Acres)	C _s	C _m	T _s (min)	L _s (ft)	I _s (in/hr)	Q _s (cfs)	Q _m (cfs)	Q _o (cfs)
1	2.10	0.85	0.91	15	4.56	7.37	8.1	14
2	1.17	0.85	0.91	15	4.56	7.37	4.5	7.3
3	1.28	0.85	0.91	15	4.56	7.37	4.9	7.9
4	1.25	0.85	0.91	15	4.56	7.37	4.8	7.8
5	1.25	0.85	0.91	15	4.56	7.37	4.8	7.8
6	1.26	0.85	0.91	15	4.56	7.37	4.9	7.9
7	1.48	0.85	0.91	15	4.56	7.37	5.7	9.5
8	1.45	0.85	0.91	15	4.56	7.37	5.6	9.1
9	2.90	0.85	0.91	15	4.56	7.37	11	18
10	16.40	0.85	0.91	15	4.56	7.37	64	103
11	21.33	0.85	0.91	15	4.56	7.37	84	136
12	2.30	0.85	0.91	15	4.56	7.37	8.9	15
13	3.14	0.85	0.91	15	4.56	7.37	12	21
14	2.14	0.85	0.91	15	4.56	7.37	8.3	13

Pro. Detention Pond
 W.S. = 160.30
 D.W.S. = 163.41
 Bottom = 150.30

Pro. 25' Concrete Wall
 W/3'-23"x14" HERCP.
 FL(In)=160.3
 Concrete Flume To
 KTA Box Culvert.

Existing Conditions
 D.A. = 27.5 ac
 C_v = 84
 T_c = 20 min.
 Q_s = 64 cfs
 Q_m = 141 cfs
 Q_o = 34 cfs
 C_{sw} = 111 cfs

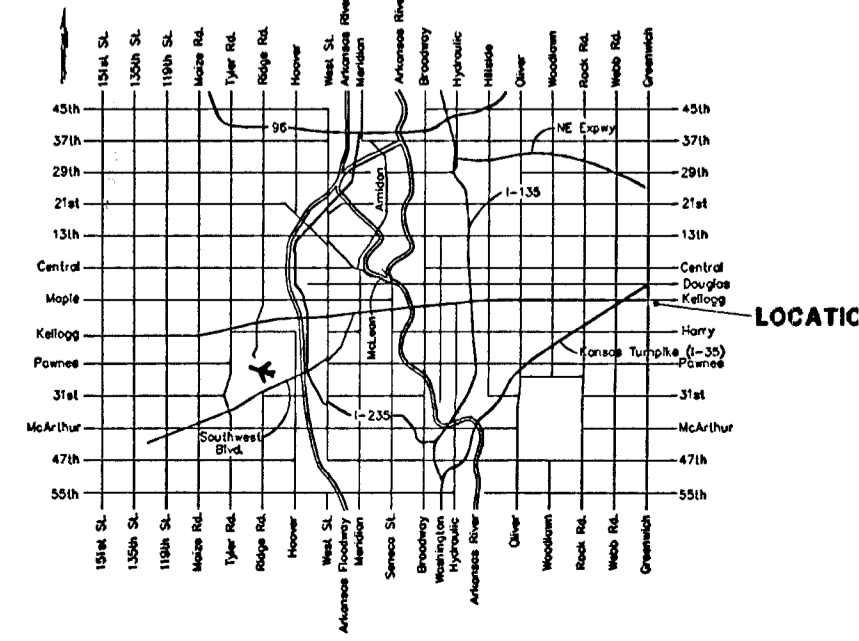
Developed Conditions
 w/ Detention:
 Q_s = 34 cfs
 C_{sw} = 111 cfs

0 100 200

DATE OF PREPARATION: 29 JAN 2001
 DATE OF TOPOGRAPHY: 7 JUNE 2000
 CONTOUR INTERVAL = 1 FOOT
 ADDITIONAL BUILDING SETBACKS PER C.U.P. DP-196,
 AMENDMENT #9.

- ⊙ = 1/4" IRON (FOUND)
- ⊙ = 1/2" IRON (FOUND)
- ⊙ = 3/4" REBAR (FOUND)
- ⊙ = 5/8" REBAR (FOUND)
- ⊙ = AXLE (FOUND)
- ⊙ = 5/8" REBAR W/ "CODEDECKE" CAP (FOUND)
- ⊙ = 1/2" REBAR W/ "BAUGHMAN" CAP (FOUND)
- (P) = PLATTED
- (C) = CALCULATED
- (M) = MEASURED

- ⊙ = Gas Meter
- ⊙ = Irrigation Control Valve - Valve Box
- ⊙ = Man Box
- ⊙ = Electric Meter
- ⊙ = Ball Pole
- ⊙ = Sign
- ⊙ = Stormwater Sewer Manhole
- ⊙ = Water Meter
- ⊙ = Water Valve
- ⊙ = Cleanout
- ⊙ = Fire Hydrant
- ⊙ = Guy Anchor
- ⊙ = Light Pole
- ⊙ = Power Pole
- ⊙ = FiberOptics Marker
- ⊙ = Southwestern Bell Marker
- ⊙ = Southwestern Bell Manhole
- ⊙ = SIB Ped = Southwestern Bell Pedestal



MINIMUM BUILDING PAD ELEVATIONS FOR LOWEST OPENING TO THE STRUCTURES

LOT	BLOCK	ELEVATION CITY DATUM
1	A	168.0
2	A	168.0
4	A	166.0
12	A	168.0

BENCHMARK:
 GREENWICH RD. & KELLOGG - CITY OF MONIA DISC
 NW COR. OF TRAFFIC SIGNAL LIGHT POLE BLK.
 48.60' NNW. OF & SANITARY SEWER MANHOLE
 48.70' S. OF & OF TRAFFIC SIGNAL MANHOLE IN KELLOGG MEDIAN
 70.50' E. OF BACK OF E. CURB ON E. SIDE OF MEDIAN IN
 GREENWICH ROAD
 ELEV. = 164.78 CITY DATUM

- DRAINAGE NOTES:**
- The Existing Soil Type per Soil Survey of Sedgewick County, Kansas is Irwin Silty Clay Loam. The Hydrologic Group Listed in D.
 - This Parcel of Land is Not Located in a FEMA Flood Hazard Zone Area Per FIRM Map. (Community/ Panel Number: 200328 0030) Effective Date: May 15, 1998.
 - The Proposed Drainage Plan Provided Herein is a Generally Defined Plan to Follow for Design. It is Recognized and Assumed That Upon the Final Design of Site Grading and Storm Sewer Improvements Within This Plot, That the Designer Will Modify or Alter the General Drainage Plan As Necessary in Order to Implement the Installation of the Improvements to Obtain the Most Economical Design and Construction Possible.