



Professional Engineering Consultants, P.A.

December 13, 2001

Mr. Bill Edens
Farmland Industries Inc.
411 N.E. Washington
Bartlesville, OK 74006

Re: Removal and Replacement of Farmland ground plane located in the NW ¼, Section 9,
T27S, R1E of the 6th P.M. City of Wichita, Sedgwick County, Kansas.
Remington Place Addition PEC project 01158-001

Dear Mr. Edens,

Per our phone conversation this date, please find 2 drawings indicating the location of the existing Farmland ground plane with respect to the proposed detention pond in Remington Place Addition. Please review our drawings and provide information for the following questions.

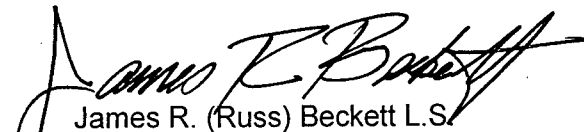
1. A written cost estimate for replacement of the ground plane facilities.
2. The maximum time available for the ground plane to be out of operation.
3. Your concurrence with our proposed location or an alternative indicated on one of the drawings.

We suggest the ground plane could be moved approximately 75 to 80 feet west of it's present location. It is our hope that a location for the new ground plane can be determined that will allow us to complete construction in the proposed location prior to removal of the existing ground plane.

Please return this information as soon as possible as we have a contractor on site waiting for approval to construct the detention pond.

Should you require additional information, please contact me at (316) 262-6457.

Very truly yours,
Professional Engineering Consultants, P.A.


James R. (Russ) Beckett L.S.
Survey Division Manager

cc: Vicky Huang P.E.
Brent Remsberg P.E.
Randy Finuf

RECEIVED
DEC 17 2001
CITY - ENGINEERING

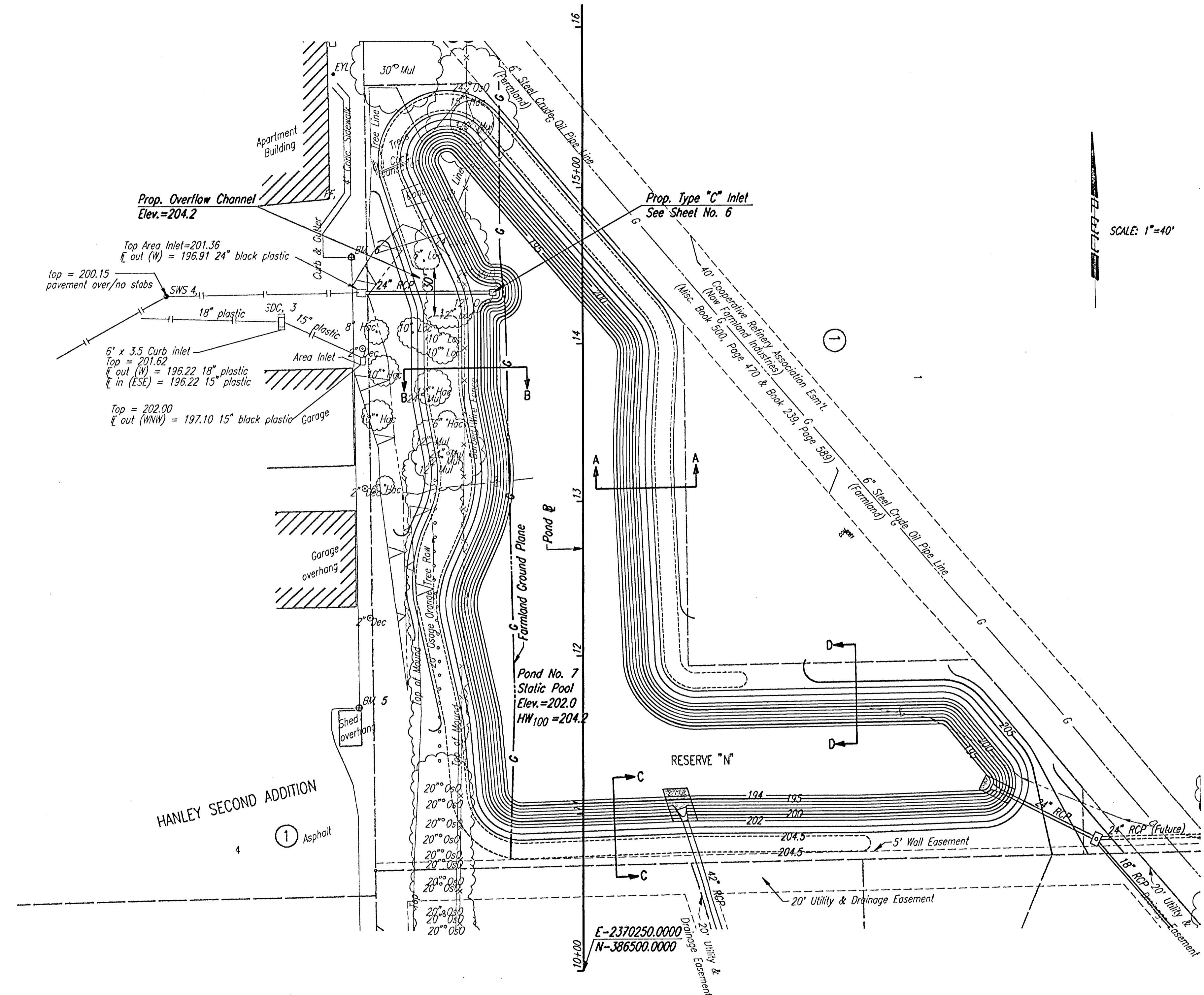
DIRECTORS:
D.E. MALTBE, P.E.
R.D. FLETCHER, P.E.
M.D. SCHOMAKER, P.E.
G.D. SCHOCK, P.E.
J.H. BAILEY, P.E., Ph. D.
D.I. NORTON, P.E.
B.E. REMSBERG, P.E.
G.K. GREENWOOD, P.E.
D.E. HAGER, P.E.

ASSOCIATE
DIRECTORS:
M.W. BERRY, P.E.
R.A. SCHLITT, P.E.
K.L. ROOD, P.E.
J.B. GEORGE, P.E.
W.G. BRITSON, P.E.

303 S. TOPEKA
WICHITA, KANSAS
67202
316-262-2691
FAX
316-262-3003
www.pec1.com
designers@pec1.com


OFFICES IN:
WICHITA
TOPEKA
LAWRENCE

PROJECT NO.	SHEET NO.	TOTAL SHEETS



SCALE: 1"=40'

DSNR: BER OPER: BUS SCALE: 1"=40' Plot Date: 12-13-2001
 i:/2001/01158/farmland.dgn

No.	Revisions	By	Date
REMINGTON PLACE-PHASE I CITY OF WICHITA, KANSAS FARMLAND STORM WATER SEWER NO. 165			
 Professional Engineering Consultants, P.A. <small>303 S. TOPEKA • WICHITA, KANSAS 67202 316-262-2691 • FAX 316-262-3003</small>			
Designed by	BER	Checked by	
Drawn by	BUS	Date	JUNE 2001
		Job No.	01158-1

x

