

BALTHROP 4TH ADDITION
TO WICHITA, SEDGWICK COUNTY, KANSAS

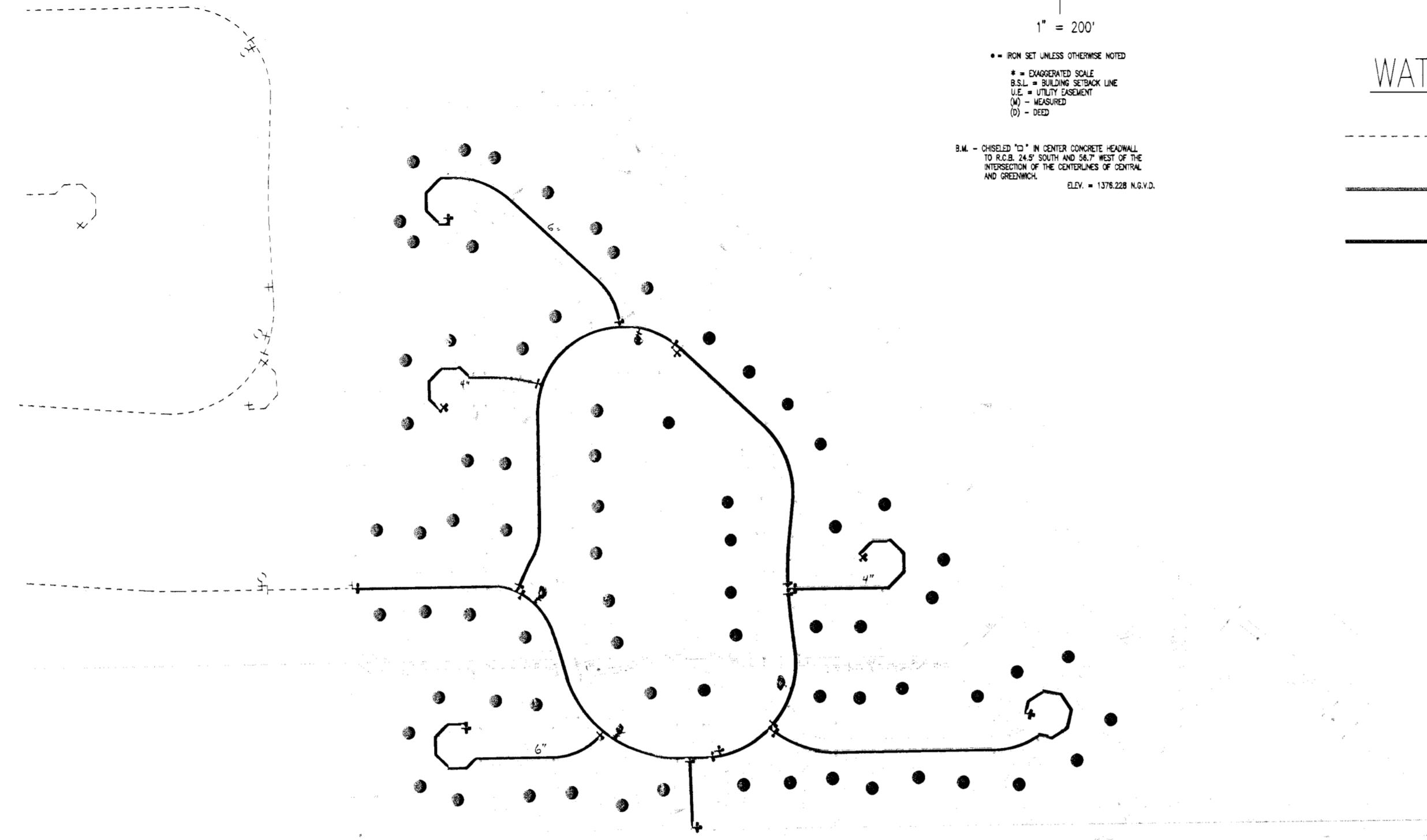
1" = 200'

•• = IRON SET UNLESS OTHERWISE NOTED
* = ENGRAINED SCALE
B.S.L. = BUILDING SETBACK LINE
U.C. = UTILITY CHECKPOINT
(X) = MEASURED
(S) = DEEP

B.M. - CHISELED "I" IN CENTER CONCRETE HEADWALL
TO R.C.B. 24.5' SOUTH AND 58.7' WEST OF THE
INTERSECTION OF THE CENTERLINES OF CENTRAL
AND SEDGWICK. ELEV. = 1379.228 N.G.V.2.

WATERLINE

- EXISTING WATERLINE
- PHASE ONE
- PHASE TWO



FUTURE PLAT
(BY OTHERS)

PLANS PREPARED BY: W.F.D. SCALE: 1"=200.00
DATE: 10-17-2001 08:16:15 am

W.F.D. 12117101