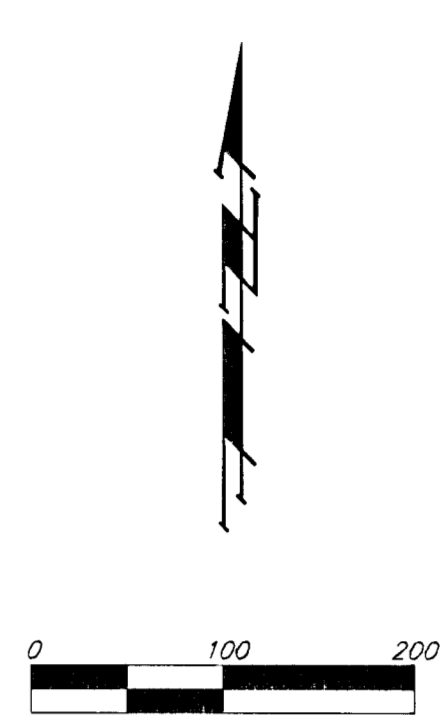
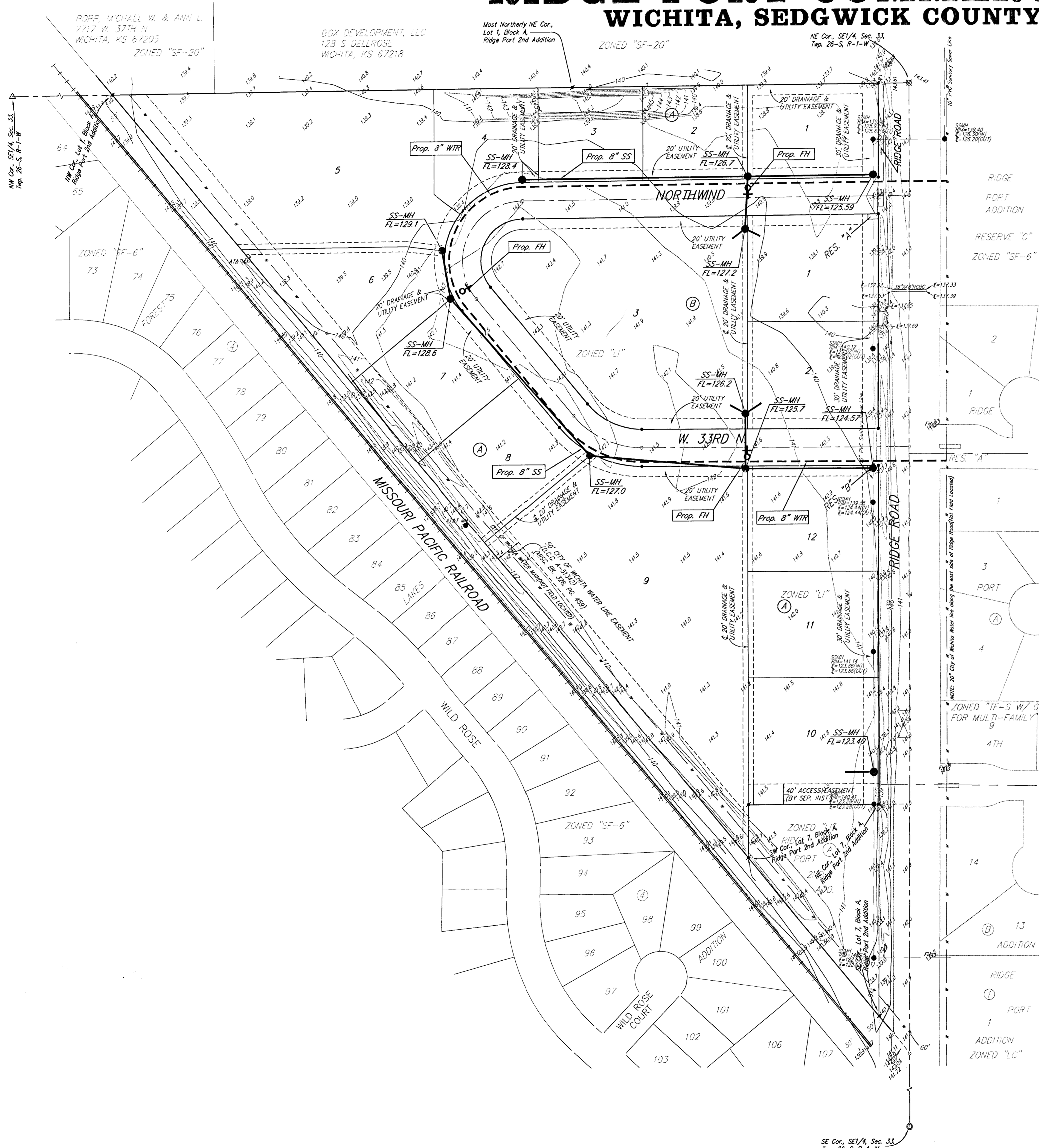


UTILITY PLAN

RIDGE PORT COMMERCIAL PARK

WICHITA, SEDGWICK COUNTY, KANSAS



- = #4 Rebar w/ "Baughman" Cap (Set)
- = #4 Rebar w/ "Baughman" Cap (Found)
- ⊙ = 1/2" iron in Thimble (Found)
- △ = 3/4" iron w/ "PEC" Cap (Found)
- ⊠ = Rail Road Spike (Found)

Minimum Building Pad Elevations for Lowest Opening to the Structures			
Lots	Block	City Datum	NGVD
1-12	A	143.9	1331.3
1-3	B	143.9	1331.3

Benchmark:
 City Date - SW Corner of Ridge Road & 29th Street North,
 80.8' S & 63.7' W. of B. both.
 Elev. = 139.15 City Datum (1326.55 NGVD)

*"D" out on SE Corner of Bridge, 1/2 Mile N. of 29th Street North & Ridge Road
 Elev. = 143.85 City Datum (1331.25 NGVD)

LEGEND

- Proposed Water Line (8" Unless Noted Otherwise)
- Proposed Sanitary Sewer Line (8" Unless Noted Otherwise)
- Proposed Sanitary Sewer Manhole
- ♀ Proposed Fire Hydrant

- FH = Fire Hydrant
- SSMH = Sanitary Sewer Manhole
- SSWSMH = Stormwater Sewer Manhole
- WM = Water Meter
- WV = Water Valve

10 MARCH 2002

SE Cor., SE 1/4, Sec. 33
 Twp. 26-S, R-1-W