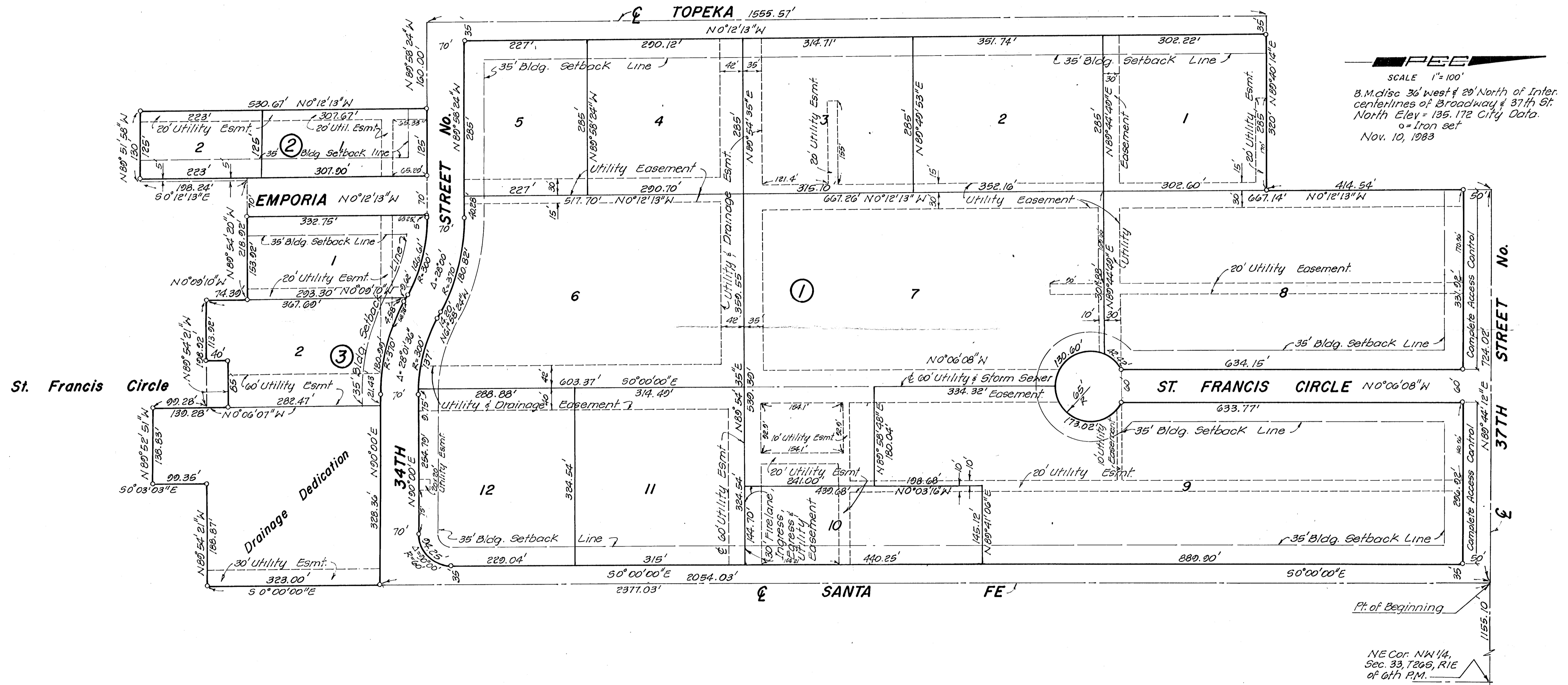


BRIDGEPORT INDUSTRIAL PARK I

Wichita, Sedgwick County, Kansas.

221



PEG
 SCALE 1"=100'
 B.M. disc 36' west & 29' North of Inter.
 centerlines of Broadway & 37th St.
 North Elev = 135.172 City Data.
 o = Iron set
 Nov. 10, 1983

NE Cor. NW 1/4,
 Sec. 33, T26S, R1E
 of 6th P.M.