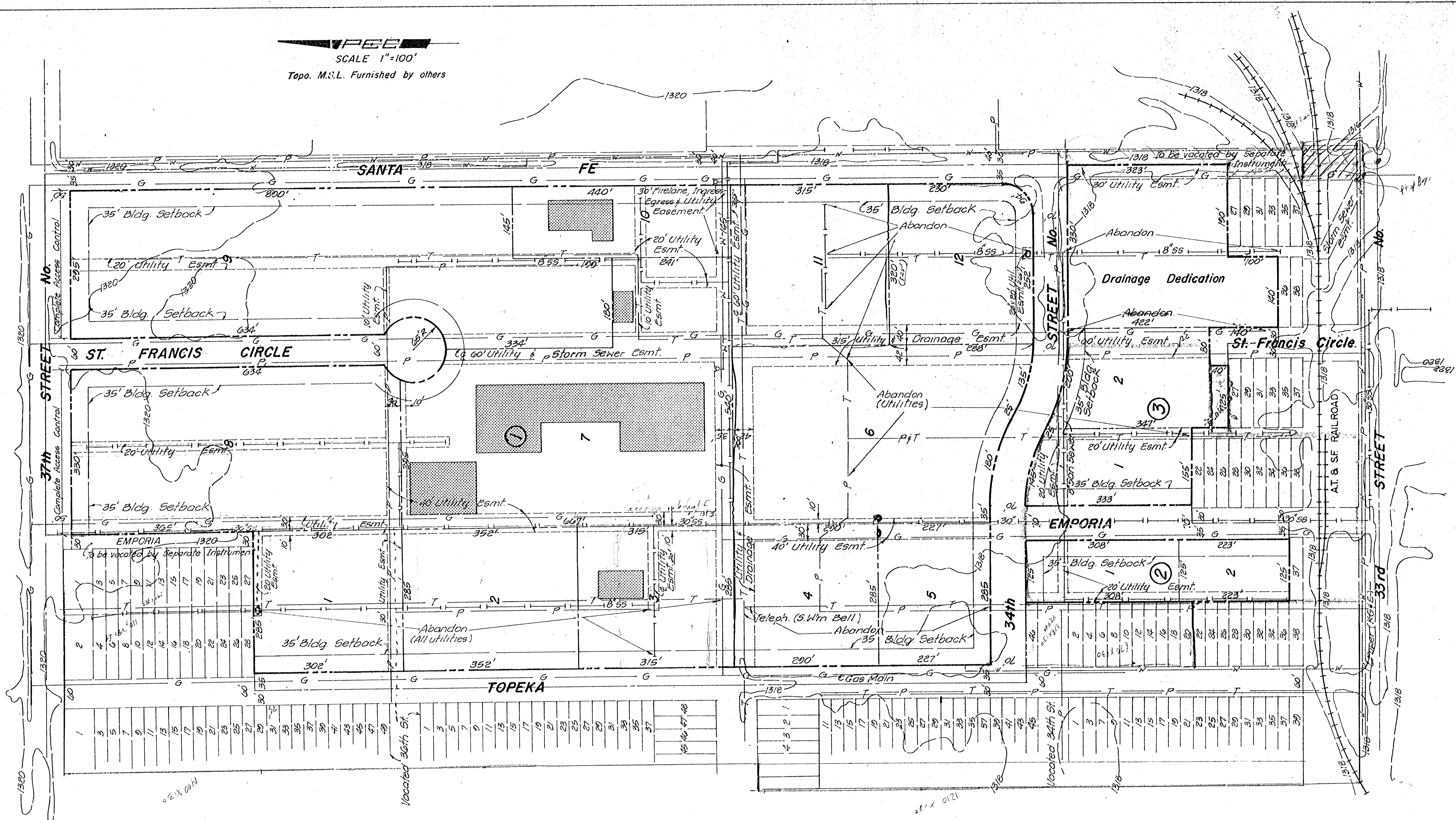


P.E.C.
 SCALE 1"=100'
 Topo. M.S.L. Furnished by others



Preliminary Plat of
BRIDGEPORT INDUSTRIAL PARK I
 Wichita, Sedgwick County, Kansas.

Owner Developer: City of Wichita, Kansas.
 Engineer: P.E.C. p.a.
 1440 English, Wichita, Ks. 67211

144, 144 (Crossed out)

PROFESSIONAL ENGINEERING CONSULTANTS, P.A.			
ENGINEERS WICHITA, KANSAS			
Designed by		Checked by	
Drawn by		Date	10-13-83
		Approval Date	Job No.