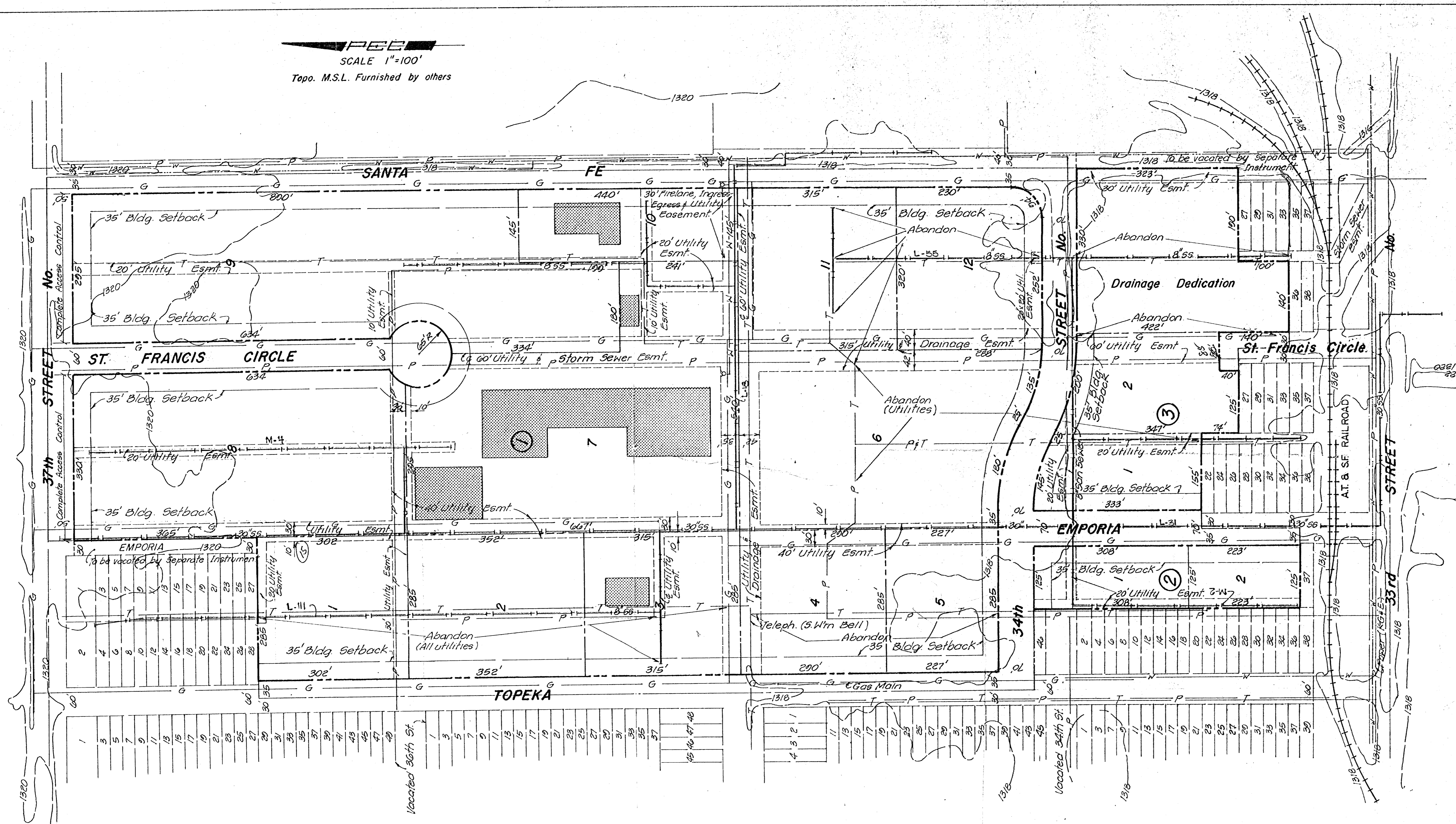


**P.E.C.**  
 SCALE 1"=100'  
 Topo. M.S.L. Furnished by others



**REVISED COPY**

**Preliminary Plat of  
 BRIDGEPORT INDUSTRIAL PARK 1  
 Wichita, Sedgwick County, Kansas.**

Owner Developer: City of Wichita, Kansas.  
 Engineer: P.E.C. p.a.  
 1440 English, Wichita, Ks. 67211

<b>PROFESSIONAL ENGINEERING CONSULTANTS, P.A.</b>			
ENGINEERS WICHITA, KANSAS			
Designed by		Checked by	
Drawn by		Date	Job No.