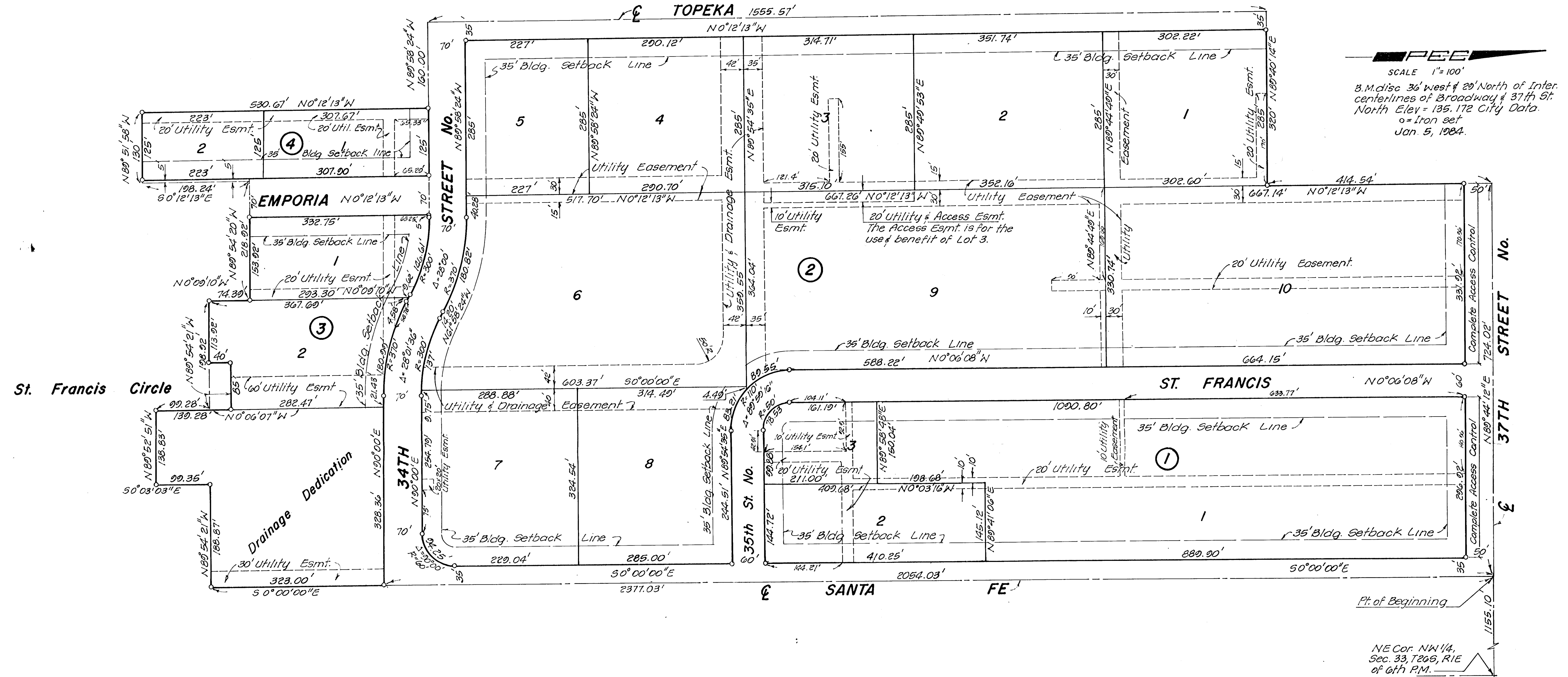


# BRIDGEPORT INDUSTRIAL PARK I

## Wichita, Sedgwick County, Kansas.



**PEE**

SCALE 1" = 100'

B.M. disc 36' west & 20' North of Inter. centerlines of Broadway & 37th St.  
North Elev = 135.172 City Data.  
0 = Iron set  
Jan. 5, 1964.