

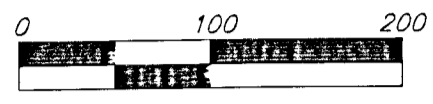
# DRAINAGE PLAN FLAT CREEK ADDITION

## WICHITA, SEDGWICK COUNTY, KANSAS

MINIMUM BUILDING PAD ELEVATION FOR THE LOWEST OPENING TO THE STRUCTURES ON ALL LOTS IN THIS SUBDIVISION SHALL BE 146.7 CITY DATUM (1334.1 NGVD).

3" x 3" RISE  
Flow = 140.16 (E & W)

NW COR. SW 1/4 SEC. 31,  
TWP. 27-S, R-1-W



ZONED "SF-20"

REDMOND, JOE A.  
4 PARKWOOD DR.  
WICHITA, KS 67208

COUNTER, RONALD R. & CAROL A.  
2138 S. 119TH ST. W.  
WICHITA, KS 67235

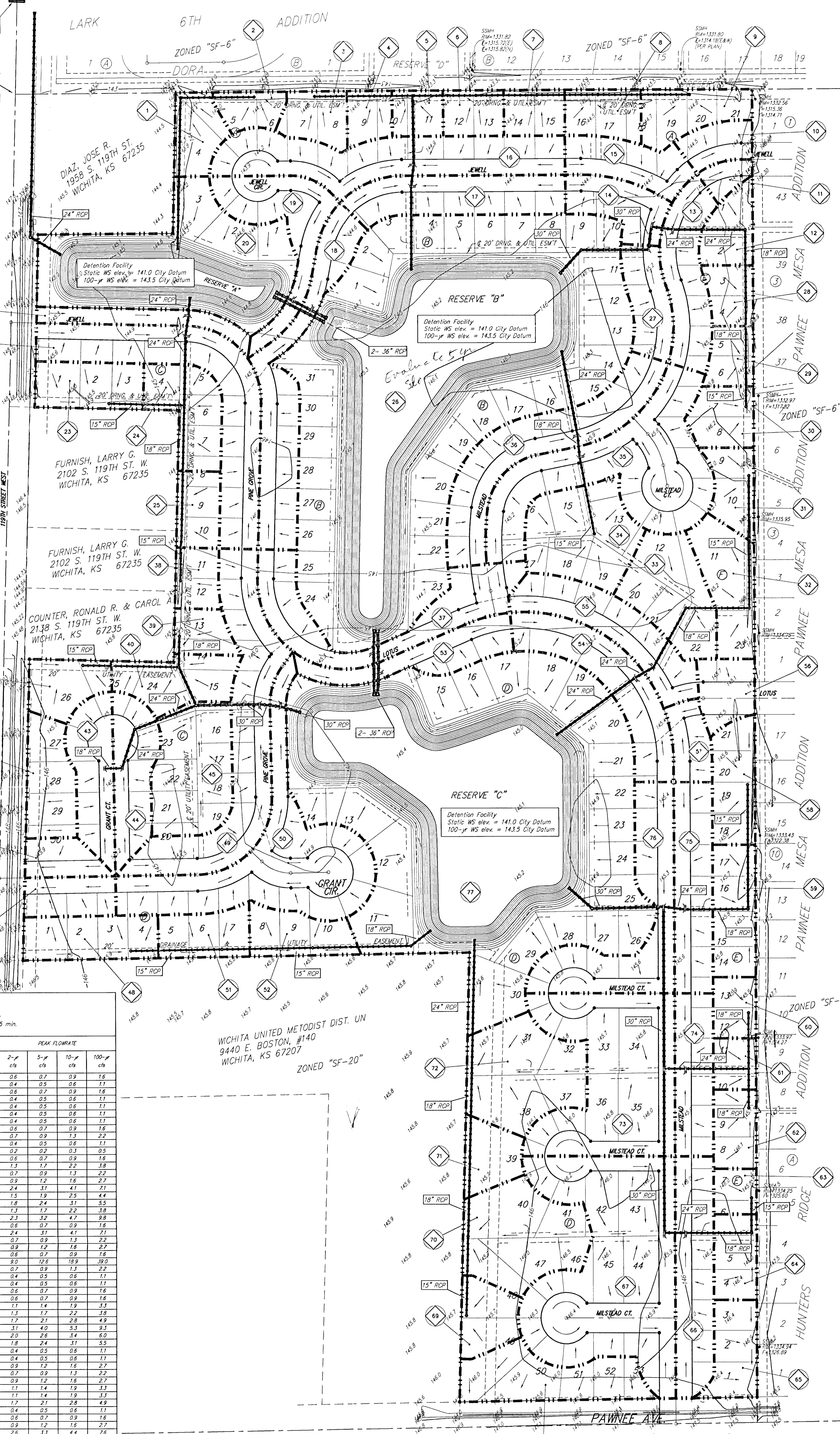
FURNISH, LARRY G.  
2102 S. 119TH ST. W.  
WICHITA, KS 67235

FURNISH, LARRY G.  
2102 S. 119TH ST. W.  
WICHITA, KS 67235

DIAZ, JOSE R.  
1958 S. 119TH ST.  
WICHITA, KS 67235

WICHITA UNITED METHODIST DIST. UN  
9440 E. BOSTON, #140  
WICHITA, KS 67207

JACOBS, LUCILLE E. REVOC. LIVING TRUST  
% MARILYN B. WOOD  
919 W. 12TH, #102  
WICHITA, KS



Hydrologic Data:  
Soil Type "D"  
all flowrates based on  
Time of Concentration of 15 min.

BASIN NO.	BASIN AREA acres	RATIONAL "Q"			PEAK FLOWRATE		
		10-y cfs	5-y cfs	100-y cfs	10-y cfs	5-y cfs	100-y cfs
1	0.3	0.48	0.52	0.60	0.74	0.6	0.7
2	0.2	0.48	0.52	0.60	0.74	0.6	0.7
3	0.3	0.48	0.52	0.60	0.74	0.6	0.7
4	0.2	0.48	0.52	0.60	0.74	0.6	0.7
5	0.2	0.48	0.52	0.60	0.74	0.6	0.7
6	0.2	0.48	0.52	0.60	0.74	0.6	0.7
7	0.2	0.48	0.52	0.60	0.74	0.6	0.7
8	0.2	0.48	0.52	0.60	0.74	0.6	0.7
9	0.2	0.48	0.52	0.60	0.74	0.6	0.7
10	0.2	0.48	0.52	0.60	0.74	0.6	0.7
11	0.2	0.48	0.52	0.60	0.74	0.6	0.7
12	0.2	0.48	0.52	0.60	0.74	0.6	0.7
13	0.2	0.48	0.52	0.60	0.74	0.6	0.7
14	0.2	0.48	0.52	0.60	0.74	0.6	0.7
15	0.2	0.48	0.52	0.60	0.74	0.6	0.7
16	0.2	0.48	0.52	0.60	0.74	0.6	0.7
17	0.2	0.48	0.52	0.60	0.74	0.6	0.7
18	0.2	0.48	0.52	0.60	0.74	0.6	0.7
19	0.2	0.48	0.52	0.60	0.74	0.6	0.7
20	0.2	0.48	0.52	0.60	0.74	0.6	0.7
21	0.2	0.48	0.52	0.60	0.74	0.6	0.7
22	0.2	0.48	0.52	0.60	0.74	0.6	0.7
23	0.2	0.48	0.52	0.60	0.74	0.6	0.7
24	0.2	0.48	0.52	0.60	0.74	0.6	0.7
25	0.2	0.48	0.52	0.60	0.74	0.6	0.7
26	0.2	0.48	0.52	0.60	0.74	0.6	0.7
27	0.2	0.48	0.52	0.60	0.74	0.6	0.7
28	0.2	0.48	0.52	0.60	0.74	0.6	0.7
29	0.2	0.48	0.52	0.60	0.74	0.6	0.7
30	0.2	0.48	0.52	0.60	0.74	0.6	0.7
31	0.2	0.48	0.52	0.60	0.74	0.6	0.7
32	0.2	0.48	0.52	0.60	0.74	0.6	0.7
33	0.2	0.48	0.52	0.60	0.74	0.6	0.7
34	0.2	0.48	0.52	0.60	0.74	0.6	0.7
35	0.2	0.48	0.52	0.60	0.74	0.6	0.7
36	0.2	0.48	0.52	0.60	0.74	0.6	0.7
37	0.2	0.48	0.52	0.60	0.74	0.6	0.7
38	0.2	0.48	0.52	0.60	0.74	0.6	0.7
39	0.2	0.48	0.52	0.60	0.74	0.6	0.7
40	0.2	0.48	0.52	0.60	0.74	0.6	0.7
41	0.2	0.48	0.52	0.60	0.74	0.6	0.7
42	0.2	0.48	0.52	0.60	0.74	0.6	0.7
43	0.2	0.48	0.52	0.60	0.74	0.6	0.7
44	0.2	0.48	0.52	0.60	0.74	0.6	0.7
45	0.2	0.48	0.52	0.60	0.74	0.6	0.7
46	0.2	0.48	0.52	0.60	0.74	0.6	0.7
47	0.2	0.48	0.52	0.60	0.74	0.6	0.7
48	0.2	0.48	0.52	0.60	0.74	0.6	0.7
49	0.2	0.48	0.52	0.60	0.74	0.6	0.7
50	0.2	0.48	0.52	0.60	0.74	0.6	0.7
51	0.2	0.48	0.52	0.60	0.74	0.6	0.7
52	0.2	0.48	0.52	0.60	0.74	0.6	0.7
53	0.2	0.48	0.52	0.60	0.74	0.6	0.7
54	0.2	0.48	0.52	0.60	0.74	0.6	0.7
55	0.2	0.48	0.52	0.60	0.74	0.6	0.7
56	0.2	0.48	0.52	0.60	0.74	0.6	0.7
57	0.2	0.48	0.52	0.60	0.74	0.6	0.7
58	0.2	0.48	0.52	0.60	0.74	0.6	0.7
59	0.2	0.48	0.52	0.60	0.74	0.6	0.7
60	0.2	0.48	0.52	0.60	0.74	0.6	0.7
61	0.2	0.48	0.52	0.60	0.74	0.6	0.7
62	0.2	0.48	0.52	0.60	0.74	0.6	0.7
63	0.2	0.48	0.52	0.60	0.74	0.6	0.7
64	0.2	0.48	0.52	0.60	0.74	0.6	0.7
65	0.2	0.48	0.52	0.60	0.74	0.6	0.7
66	0.2	0.48	0.52	0.60	0.74	0.6	0.7
67	0.2	0.48	0.52	0.60	0.74	0.6	0.7
68	0.2	0.48	0.52	0.60	0.74	0.6	0.7
69	0.2	0.48	0.52	0.60	0.74	0.6	0.7
70	0.2	0.48	0.52	0.60	0.74	0.6	0.7
71	0.2	0.48	0.52	0.60	0.74	0.6	0.7
72	0.2	0.48	0.52	0.60	0.74	0.6	0.7
73	0.2	0.48	0.52	0.60	0.74	0.6	0.7
74	0.2	0.48	0.52	0.60	0.74	0.6	0.7
75	0.2	0.48	0.52	0.60	0.74	0.6	0.7
76	0.2	0.48	0.52	0.60	0.74	0.6	0.7
77	0.2	0.48	0.52	0.60	0.74	0.6	0.7

NOTE: The proposed drainage plan provided herein is a generally defined plan to follow for design. It is recognized and assumed that upon the final design of street and storm sewer improvements within this plat that the designer will modify or alter the general drainage plan as necessary in order to implement the installation of the improvements to obtain the most economical design and construction possible.

FEBRUARY 26, 2001

**BAUGHMAN COMPANY P.A.**  
ENGINEERING SURVEYING & PLANNING  
316-282-2221 316-282-2222 316-282-2223  
P:\16160\PROJECTS\FLATCREEK\DRAINAGEPLAN.DWG-RWR.dwg