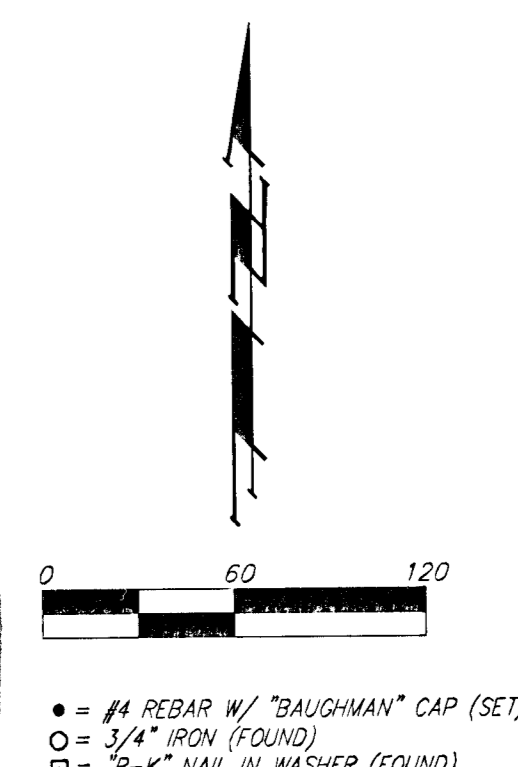
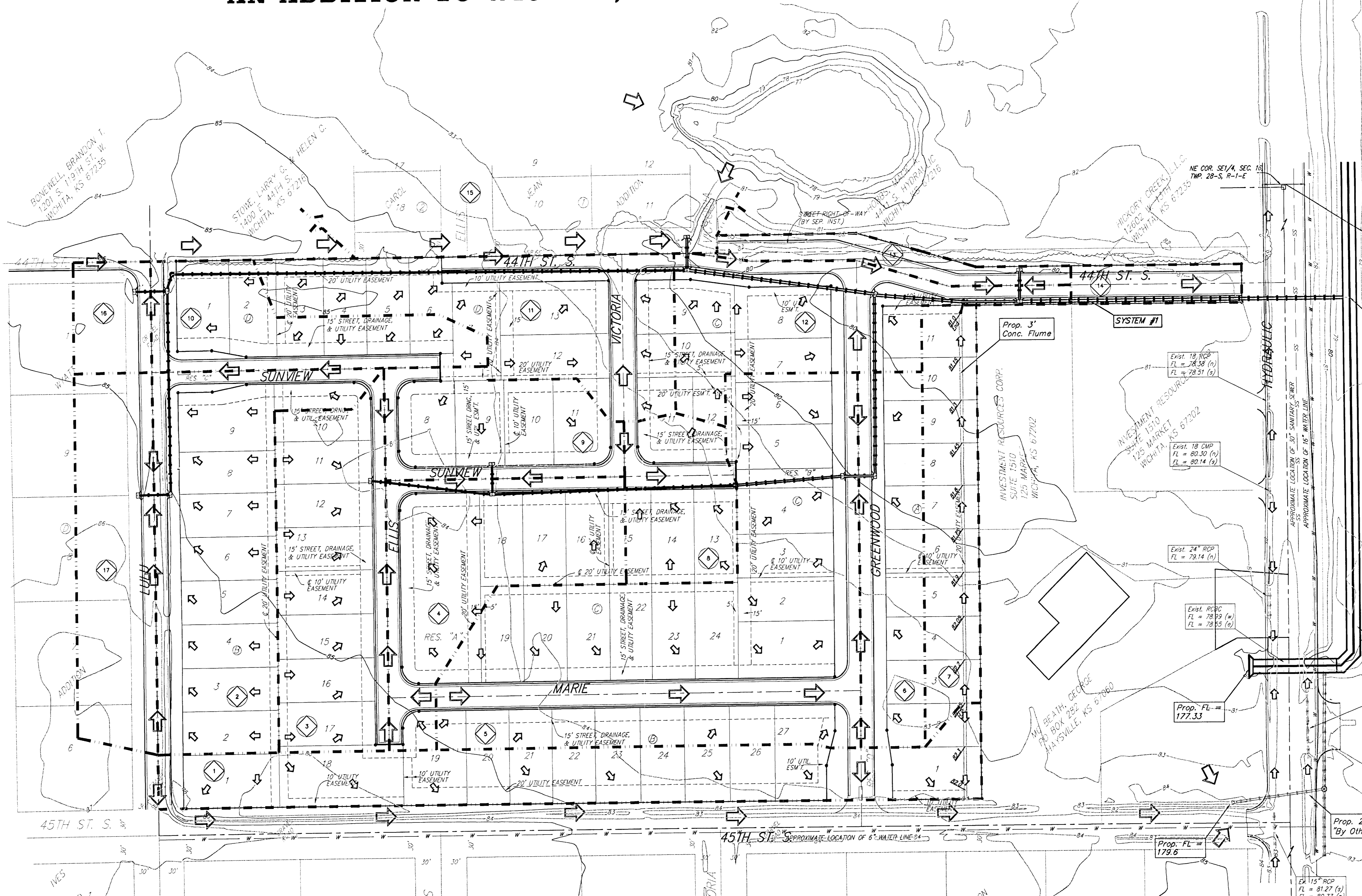


DRAINAGE PLAN HIDDEN GLEN AN ADDITION TO WICHITA, SEDGWICK COUNTY, KANSAS



- = #4 REBAR W/ "BAUGHMAN" CAP (SET)
- = 3/4" IRON (FOUND)
- = "P-K" NAIL IN WASHER (FOUND)

Prop. Street Improvement
Per City Street & SWS
Project 472-76-245-83324

Prop. FL =
176.32

Prop. 2-7x3' RCBC
"By Others"

Ex. 18" RCP
FL = 80.16 (s)
FL = 79.82 (n)

Prop. 24" RCP
"By Others"

Ex. 15" RCP
FL = 81.27 (s)
FL = 80.77 (n)

Prop. #	0.4 (ft.)	2" - yr		5" - yr		10" - yr		25 (min.)		0		0	
		1	2	1	2	1	2	1	2	1	2	1	2
1	1.46	0.52	0.54	0.67	15	2.9	3.6	7.2					
2	1.56	0.52	0.54	0.67	15	3.1	3.8	7.7					
3	1.18	0.52	0.54	0.67	15	2.4	2.9	5.8					
4	1.12	0.52	0.54	0.67	15	2.2	2.8	5.5					
5	0.44	0.52	0.54	0.67	15	0.9	1.1	2.2					
6	0.75	0.52	0.54	0.67	15	1.5	1.8	3.7					
7	0.68	0.52	0.54	0.67	15	1.4	1.7	3.4					
8	0.55	0.52	0.54	0.67	15	1.1	1.4	2.7					
9	0.74	0.52	0.54	0.67	15	1.5	1.8	3.7					
10	0.73	0.52	0.54	0.67	15	1.5	1.8	3.6					
11	1.24	0.52	0.54	0.67	15	2.5	3.1	6.1					
12	1.01	0.52	0.54	0.67	15	2	2.5	5.0					
13	0.26	0.52	0.54	0.67	15	0.5	0.6	1.3					
14	0.2	0.52	0.54	0.67	15	0.4	0.5	1.0					
15	8.6	0.52	0.54	0.67	27	13	16	14					
16	0.27	0.52	0.54	0.67	15	0.5	0.7	1.3					
17	0.91	0.52	0.54	0.67	15	1.8	2.2	4.5					

BENCHMARK:
City of Wichita benchmark, SE corner of intersection of
Hydraulic and 43rd St. South, 25.50' east and 35' south of
centerline.
Elev. = 84.99 City Datum