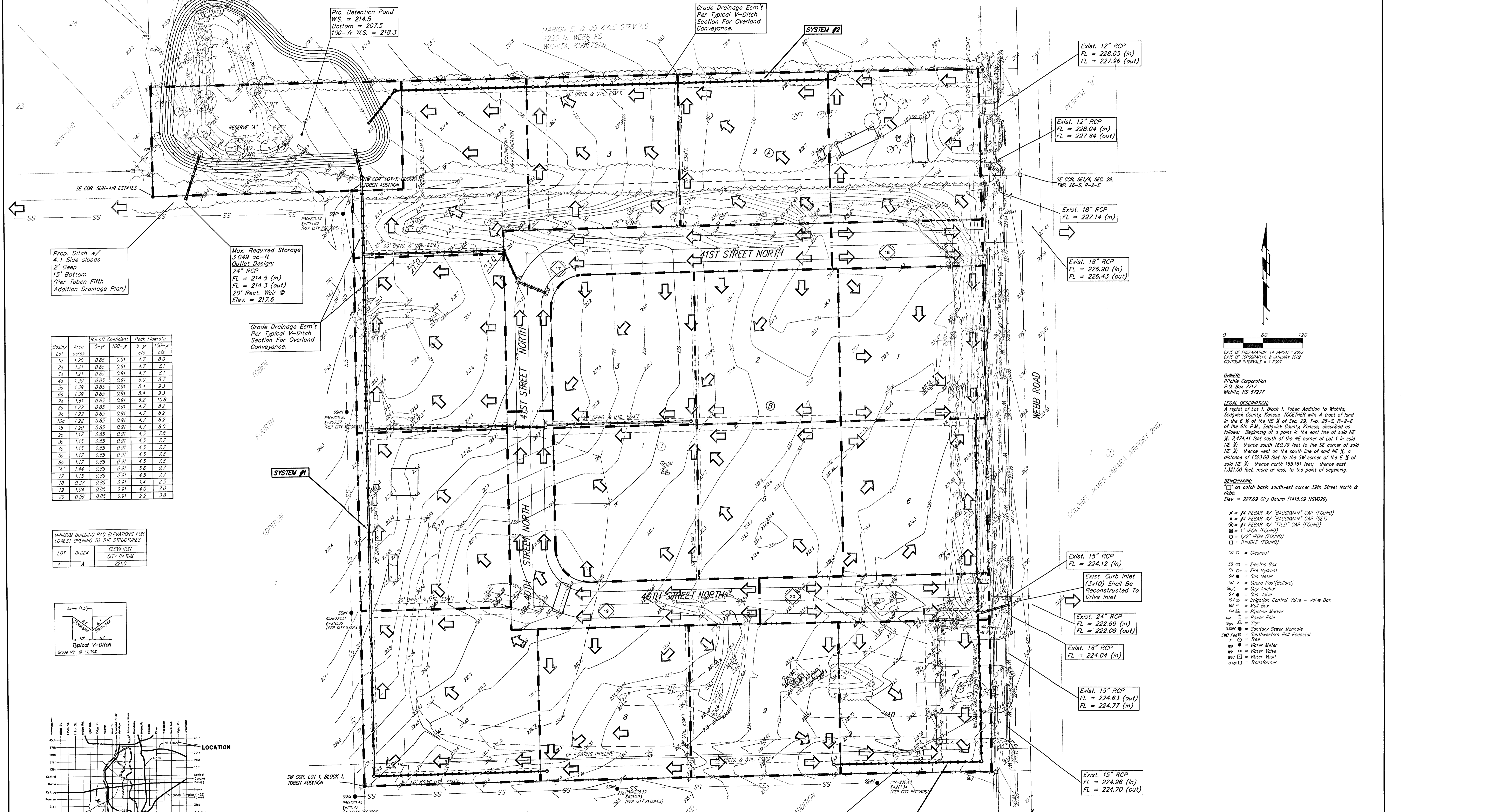


DRAINAGE PLAN

RITCHIE INDUSTRIAL PARK

WICHITA, SEDGWICK COUNTY, KANSAS



Prop. Detention Pond
W.S. = 214.5
Bottom = 207.5
100-yr W.S. = 218.3

Grade Drainage Est't
Per Typical V-Ditch
Section For Overland
Conveyance.

Exist. 12" RCP
FL = 228.05 (in)
FL = 227.96 (out)

Exist. 12" RCP
FL = 228.04 (in)
FL = 227.84 (out)

Exist. 18" RCP
FL = 227.14 (in)

Exist. 18" RCP
FL = 226.90 (in)
FL = 226.43 (out)

Exist. 15" RCP
FL = 224.12 (in)

Exist. 24" RCP
FL = 222.69 (in)
FL = 222.06 (out)

Exist. 18" RCP
FL = 224.04 (in)

Exist. 15" RCP
FL = 224.63 (out)
FL = 224.77 (in)

Exist. 15" RCP
FL = 224.96 (in)
FL = 224.70 (out)

Grade Drainage Est't
Per Typical V-Ditch
Section For Overland
Conveyance.

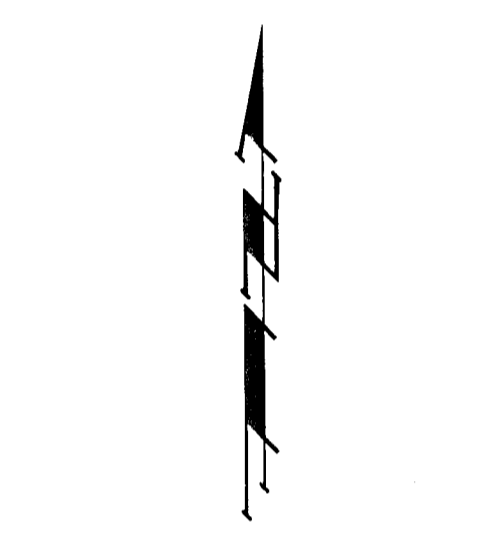
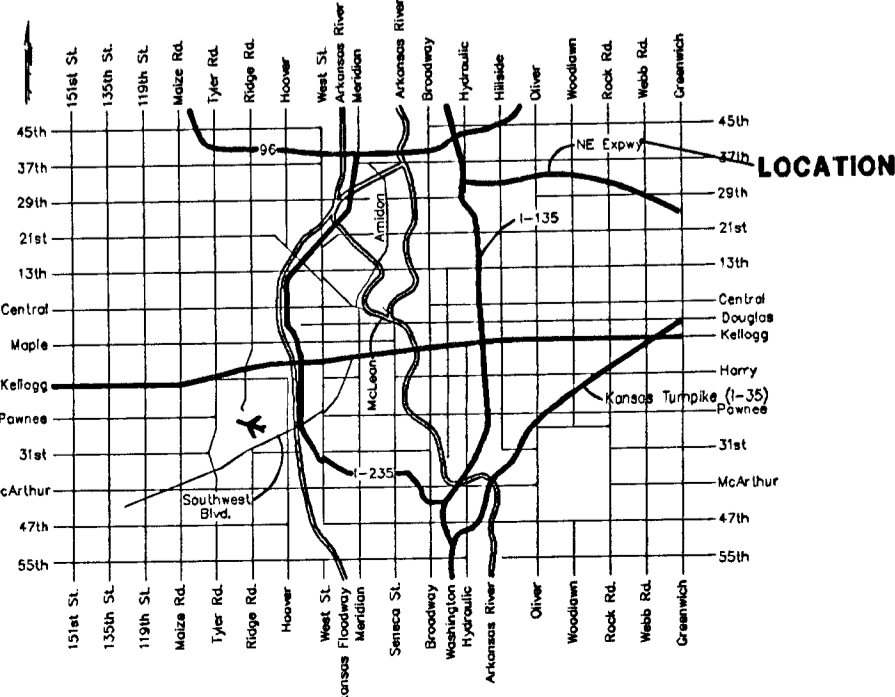
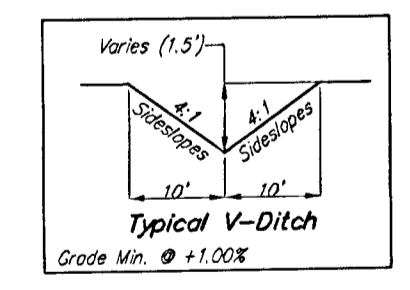
Prop. Ditch w/
4:1 Side slopes
2' Deep
15' Bottom
(Per Toben Fifth
Addition Drainage Plan)

Max. Required Storage
3,049 ac-ft
Outlet Design:
24" RCP
FL = 214.5 (in)
FL = 214.3 (out)
20' Rect. Weir @
Elev. = 217.8

Grade Drainage Est't
Per Typical V-Ditch
Section For Overland
Conveyance.

Basin/Lot	Area acres	Runoff Coefficient	Peak Flowrate		
		5-yr	100-yr		
		cfs	cfs		
1a	1.20	0.85	0.91	4.7	8.0
2a	1.21	0.85	0.91	4.7	8.1
3a	1.21	0.85	0.91	4.7	8.1
4a	1.30	0.85	0.91	5.0	8.7
5a	1.39	0.85	0.91	5.4	9.3
6a	1.39	0.85	0.91	5.4	9.3
7a	1.61	0.85	0.91	6.2	10.8
8a	1.22	0.85	0.91	4.7	8.2
9a	1.22	0.85	0.91	4.7	8.2
10a	1.22	0.85	0.91	4.7	8.2
1b	1.20	0.85	0.91	4.7	8.0
2b	1.17	0.85	0.91	4.5	7.8
3b	1.15	0.85	0.91	4.5	7.7
4b	1.15	0.85	0.91	4.5	7.7
5b	1.17	0.85	0.91	4.5	7.8
6b	1.17	0.85	0.91	4.5	7.8
A	1.44	0.85	0.91	5.6	9.7
17	1.15	0.85	0.91	4.5	7.7
18	0.37	0.85	0.91	1.4	2.5
19	1.04	0.85	0.91	4.0	7.0
20	0.56	0.85	0.91	2.2	3.8

LOT	BLOCK	ELEVATION
		CITY DATUM
4	A	221.0



DATE OF PREPARATION: 14 JANUARY 2002
DATE OF TOPOGRAPHY: 8 JANUARY 2002
CONTOUR INTERVALS = 1 FOOT

OWNER:
Ritchie Corporation
P.O. Box 7717
Wichita, KS 67277

LEGAL DESCRIPTION:
A report of Lot 1, Block 1, Toben Addition to Wichita, Sedgwick County, Kansas, TOGETHER with A tract of land in the E 1/4 of the NE 1/4 of Sec. 29, Twp. 26-S, R-2-E of the 6th P.M., Sedgwick County, Kansas, described as follows: Beginning at a point in the east line of said NE 1/4, 2,474.41 feet south of the NE corner of Lot 1 in said NE 1/4; thence south 160.79 feet to the SE corner of said NE 1/4; thence south on the south line of said NE 1/4, a distance of 1,323.00 feet to the SW corner of the E 1/4 of said NE 1/4; thence north 165.161 feet, thence east 1,321.00 feet, more or less, to the point of beginning.

BENCHMARK:
BM on catch basin southwest corner 39th Street North & Webb.
Elev. = 227.69 City Datum (1415.09 NGVD29)

- = #4 REBAR W/ "BAUGHMAN" CAP (FOUND)
- = #4 REBAR W/ "BAUGHMAN" CAP (SET)
- ⊗ = #4 REBAR W/ "TILES" CAP (FOUND)
- = 1" IRON (FOUND)
- = 1/2" IRON (FOUND)
- = TRIMBLE (FOUND)
- = Cleanout
- EB □ = Electric Box
- PH ○ = Fire Hydrant
- GM ○ = Gas Meter
- GU ○ = Guard Post (Ballard)
- GA ○ = Guy Anchor
- GV ○ = Gas Valve
- ICV □ = Irrigation Control Valve - Valve Box
- MB □ = Man Box
- PM ○ = Pipeline Marker
- PP □ = Power Pole
- Sign ○ = Sign
- SSM ○ = Sanitary Sewer Manhole
- SWB Ped □ = Southwestern Bell Pedestal
- T ○ = Tree
- WM ○ = Water Meter
- WV ○ = Water Valve
- WV □ = Water Vault
- TRM □ = Transformer

28 FEBRUARY 2002