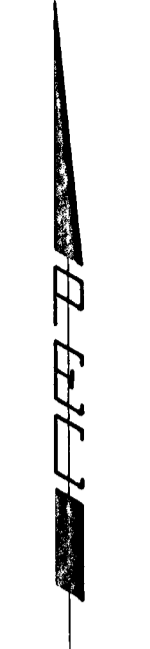


NORTHRIDGE LAKES

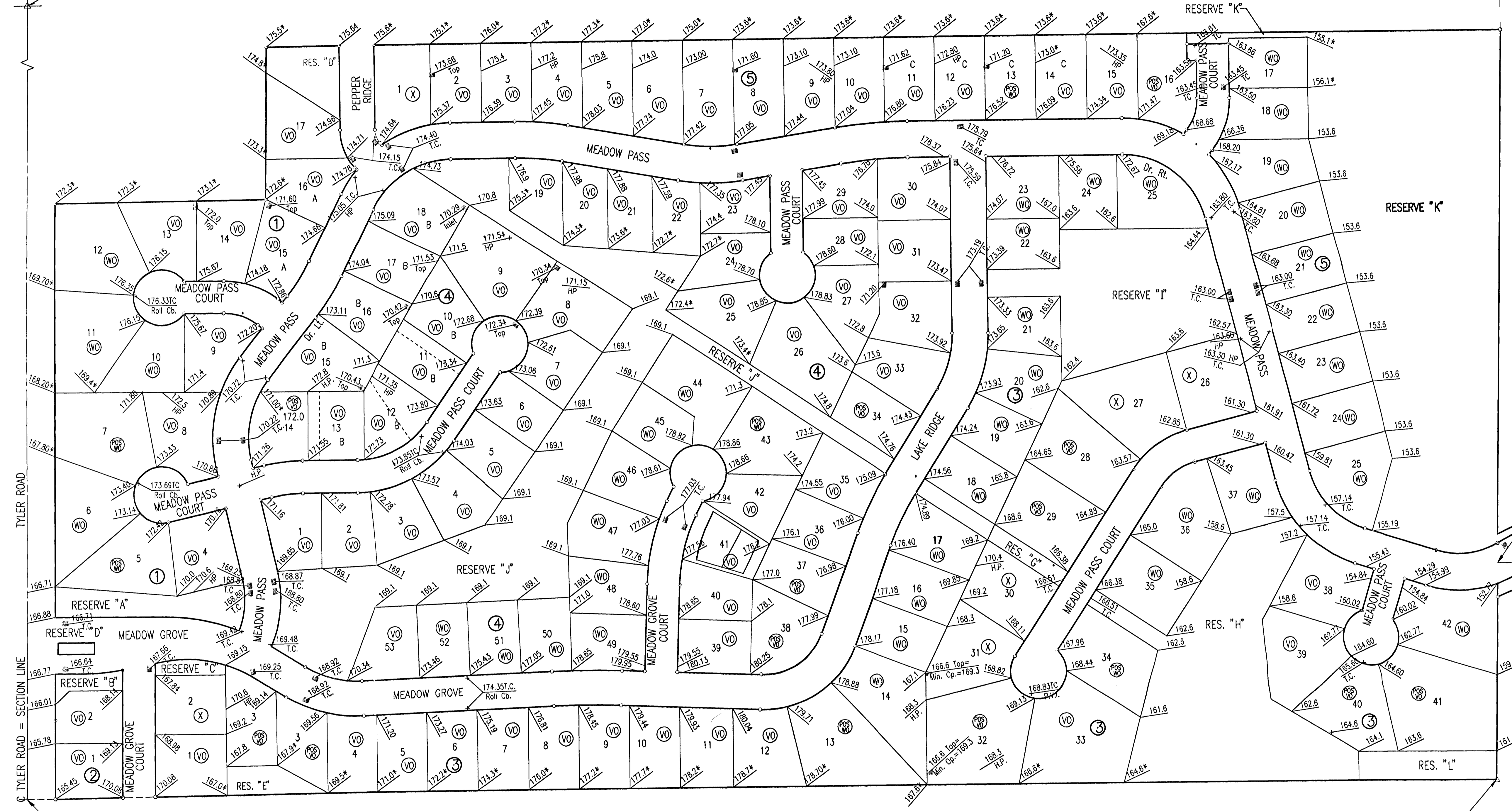
AN ADDITION TO WICHITA, SEDGWICK COUNTY, KANSAS

N.E. Corner N.W. 1/4
Sec. 4, T27S, R1W
of the 6th p.m.
Fd. 1/2" I.P.

N.W. Corner
Sec. 4, T27S, R1W
of the 6th p.m.
Fd. 1" I.P.



SCALE: 1=100'
○ = IRON SET
BSL = BUILDING SETBACK LINE
CAC = COMPLETE ACCESS CONTROL



B.M. - CITY OF WICHITA BENCH MARK DISC, 38 FEET WEST AND 90 FEET SOUTH OF THE INTERSECTION OF THE CENTERLINES OF TYLER ROAD AND 21ST STREET NORTH.
ELEV. 1357.349 M.S.L. = 169.949 CITY DATUM

B.M. - RAILROAD SPIKE IN SOUTHWEST SIDE OF POWER POLE LOCATED 75' NORTH AND 58' EAST OF THE INTERSECTION OF THE CENTERLINES OF RIDGE ROAD AND 21ST STREET NORTH.
ELEV. 1330.70 M.S.L. = 143.30 CITY DATUM

MINIMUM PAD ELEVATION (LOWEST OPENING) AS FOLLOWS:

BLOCK 3
LOTS 20 THROUGH 27 ELEV. = 1349.5 M.S.L. = 162.1 CITY DATUM
LOTS 33, 34, 39, AND 40 ELEV. = 1350.5 M.S.L. = 163.1 CITY DATUM
LOTS 35 THROUGH 38 ELEV. = 1344.6 M.S.L. = 157.2 CITY DATUM

BLOCK 4
LOTS 1 THROUGH 9 ELEV. = 1357.0 M.S.L. = 169.6 CITY DATUM
LOTS 19 THROUGH 25 ELEV. = 1357.0 M.S.L. = 169.6 CITY DATUM
LOTS 44 THROUGH 48 ELEV. = 1357.0 M.S.L. = 169.6 CITY DATUM
LOTS 50 THROUGH 53 ELEV. = 1357.0 M.S.L. = 169.6 CITY DATUM

BLOCK 5
LOTS 17 THROUGH 25 ELEV. = 1338.4 M.S.L. = 151.0 CITY DATUM

ELEVATIONS SHOWN ON FACE OF PLAT ARE IN CITY OF WICHITA DATUM

N.W. Corner Reserve "I"
Reflection Ridge 7th Addition
Most Northern Point
Lot 1, Block 5, Reflection
Ridge 7th Addition
Most Easterly Point
Lot 1, Block 5, Reflection
Ridge 7th Addition
Most Southern Corner
Lot 1, Block 5, Reflection
Ridge 7th Addition

LEGEND

- H.P. HIGH POINT
- * MATCH EXISTING
- T.C. TOP OF CURB ELEVATION
- VO VIEW OUT BASEMENT LOT
- POSSIBLE VIEW OUT BASEMENT LOT
- X NO VIEW OUT BASEMENT LOT
- WO WALK OUT BASEMENT LOT
- POSSIBLE WALK OUT BASEMENT LOT
- A MINIMUM OPENING FOR VIEW OUT OR WALK OUT BASEMENT = 173.6
- B MINIMUM OPENING FOR VIEW OUT OR WALK OUT BASEMENT = 172.5
- C MINIMUM OPENING FOR VIEW OUT OR WALK OUT BASEMENT = 174.35

**APPROVED
DRAINAGE PLAN**

REVISED JANUARY 2000

DSNR: SAD OPER. SAD SCALE: 1=100.00
C:\Lot_Grading\Northridge Lakes\4Corner 09-08-1999 02:01:00 pm

S.W. Corner, N.W. 1/4
Sec. 4, T27S, R1W
of the 6th p.m.
Fd. 1/2" I.P.

Center
Sec. 4, T27S, R1W
of the 6th p.m.
Fd. 3/4" I.P.