

UTILITY PLAN DEINES ADDITION

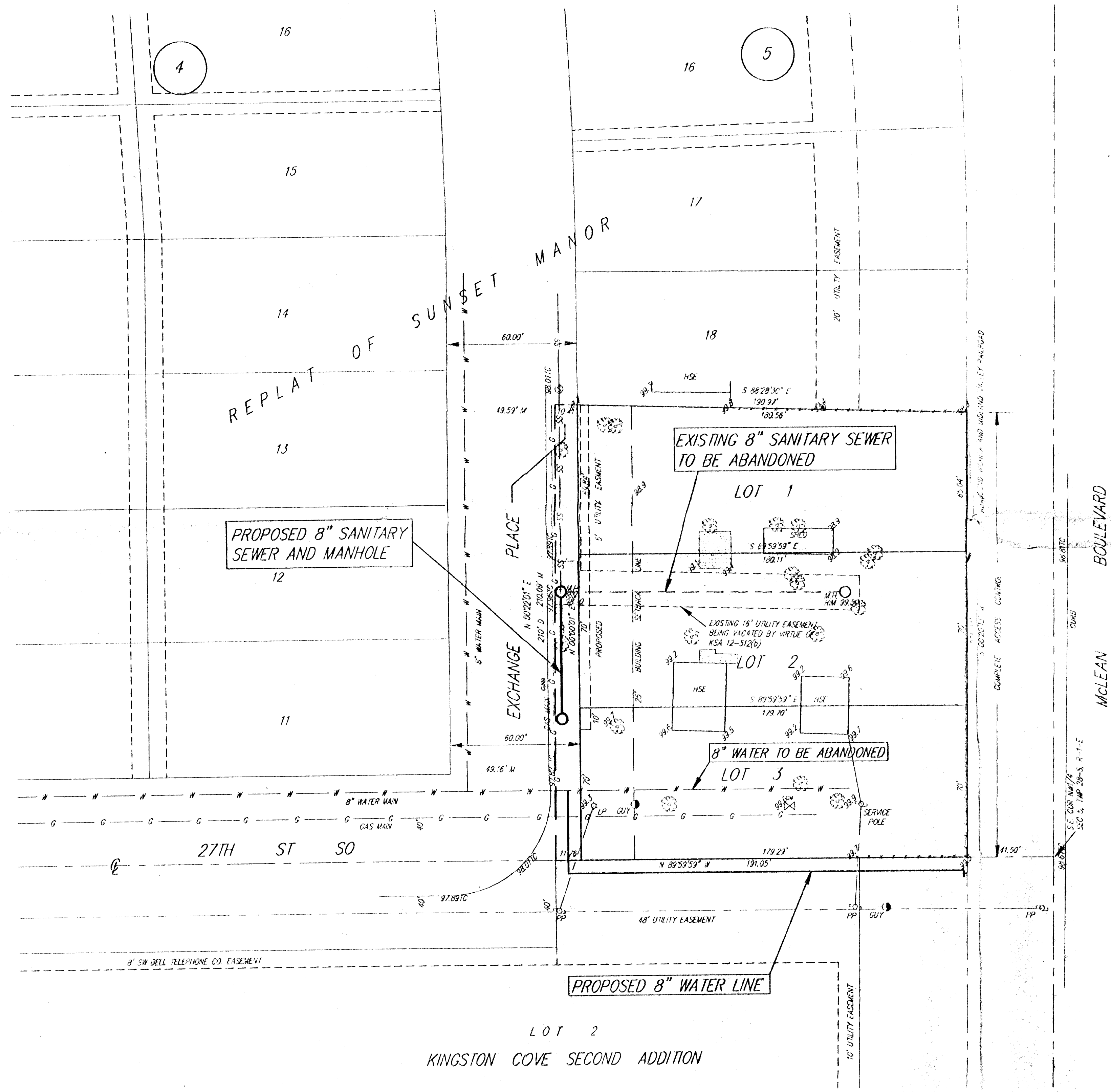
WICHITA, SEDGWICK COUNTY, KANSAS

SCANNED

Begin: 91.5 feet west of the S.E. Corner of the NW1/4 of Sec. 5, Twp. 28-S, R-1-E of the 6th P.M., Sedgwick County, Kansas; thence west 141 feet; thence north 210 feet; thence east, 142 feet; thence south, 207 feet to the point of beginning, together with the west half of abandoned Wichita and Midland Railway Railroad adjoining on the east.

Public easements and dedications being vacated by virtue of K.S.A.12-512(b).

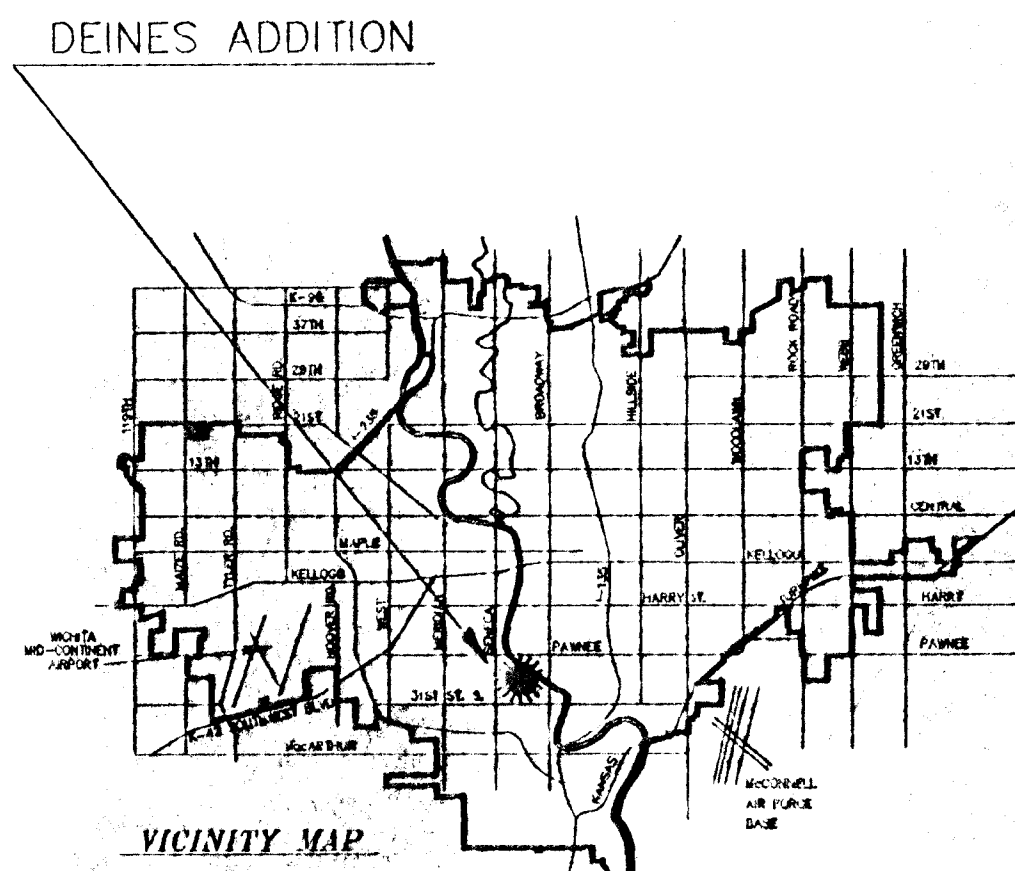
Ella Deines Living Trust,
Ella Deines Trustee
1715 N. 17th St.
Wichita, KS 67213
PH (316) 63-8796



NOTE:
THE EXISTING STRUCTURES ARE TO BE REMOVED PRIOR TO REQUESTING A BUILDING PERMIT FOR LOTS 1, 2, OR 3, IN DEINES ADDITION, WICHITA, SEDGWICK COUNTY, KANSAS.

1" = 30'
ELEV = CITY DATUM

BENCH MARK:
RR SPIKE IN P.P. 93.5' W & 22.5' S
OF THE S.E. COR NW1/4 SEC 5,
TWP. 28-S, R-1-E
ELEV = 100.40 CITY DATUM



SCANNED

6-16-95 CHRIS ~drainage\0026Opp.dwg

UTILITY PLAN DEINES ADDITION					
SRB		924 NORTH MAIN WICHITA, KANSAS 67203		316-254-8008 FAX 264-4621	
SAVOY, RUGGLES & BOHM, P.A. ENGINEERING & SURVEYING					
PROJECT NUMBER					
DRAWN	DESIGN	REVIEW	DATE	UTILITY	SRB JOB