

D.A. OFF SITE = 18.4 AC.

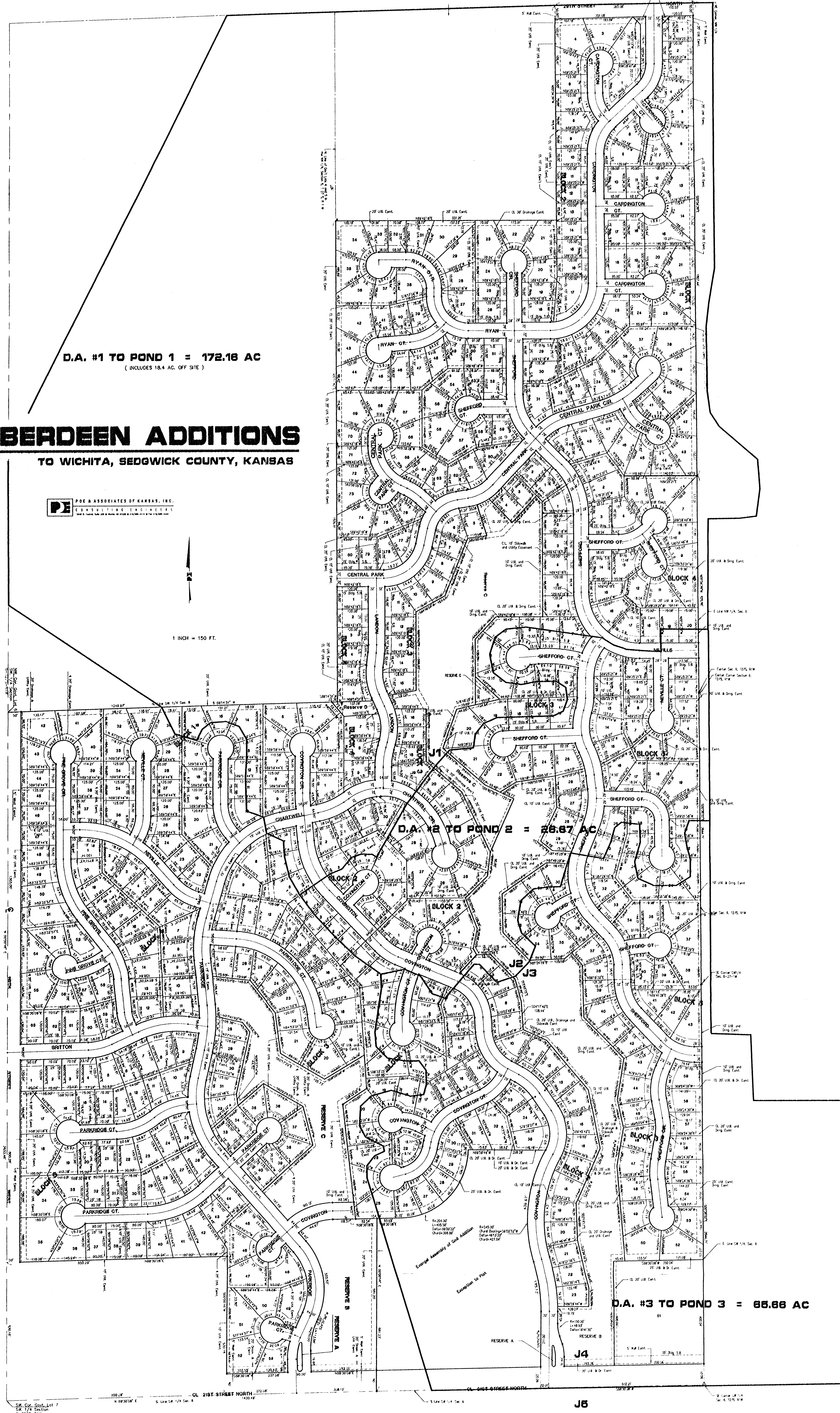
D.A. #1 TO POND 1 = 172.16 AC
(INCLUDES 18.4 AC. OFF SITE.)

ABERDEEN ADDITIONS

TO WICHITA, SEDGWICK COUNTY, KANSAS

PE POE & ASSOCIATES OF KANSAS, INC.
CONSULTING ENGINEERS
1000 W. 17th St., Suite 100, Wichita, KS 67202-1000

1 INCH = 150 FT.



D.A. #2 TO POND 2 = 26.87 AC

D.A. #3 TO POND 3 = 86.88 AC