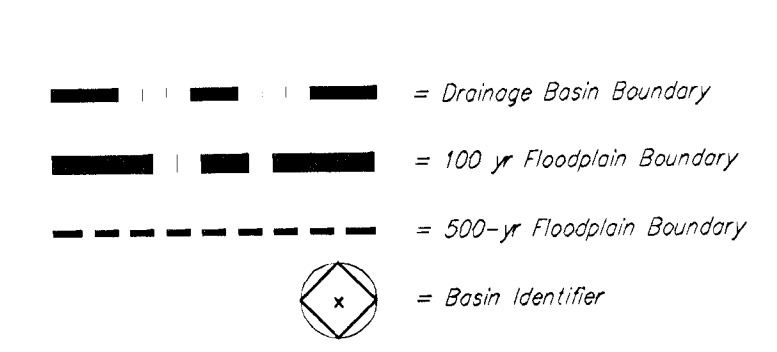
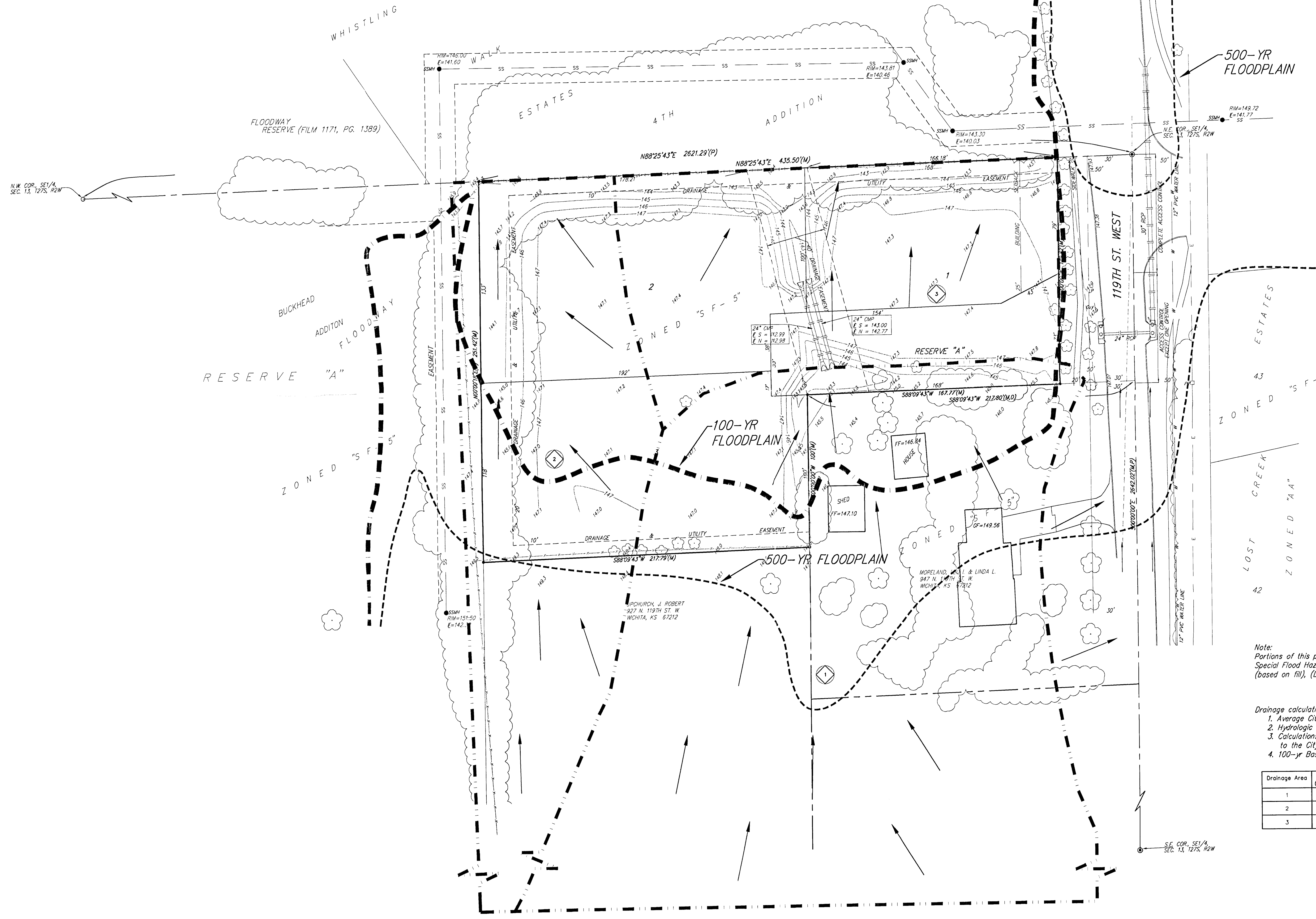
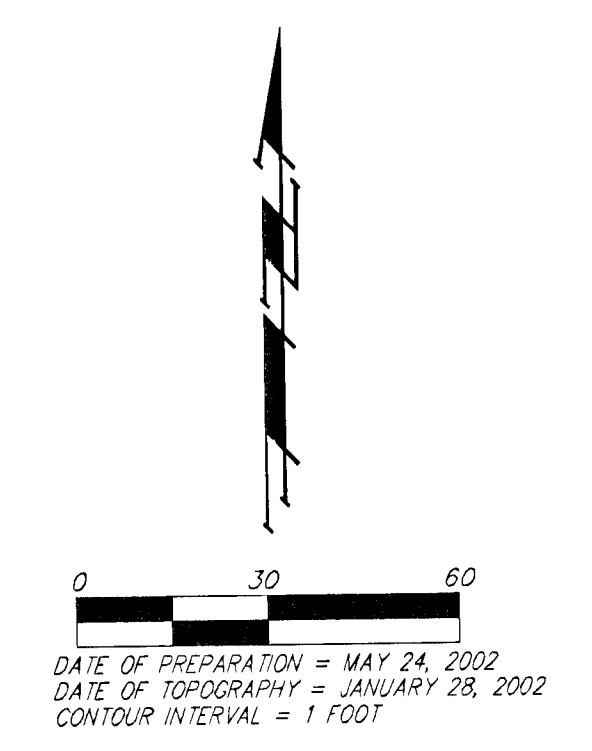


# DRAINAGE CONCEPT WOODS EDGE AN ADDITION TO WICHITA, SEDGWICK COUNTY, KANSAS

SCANNED

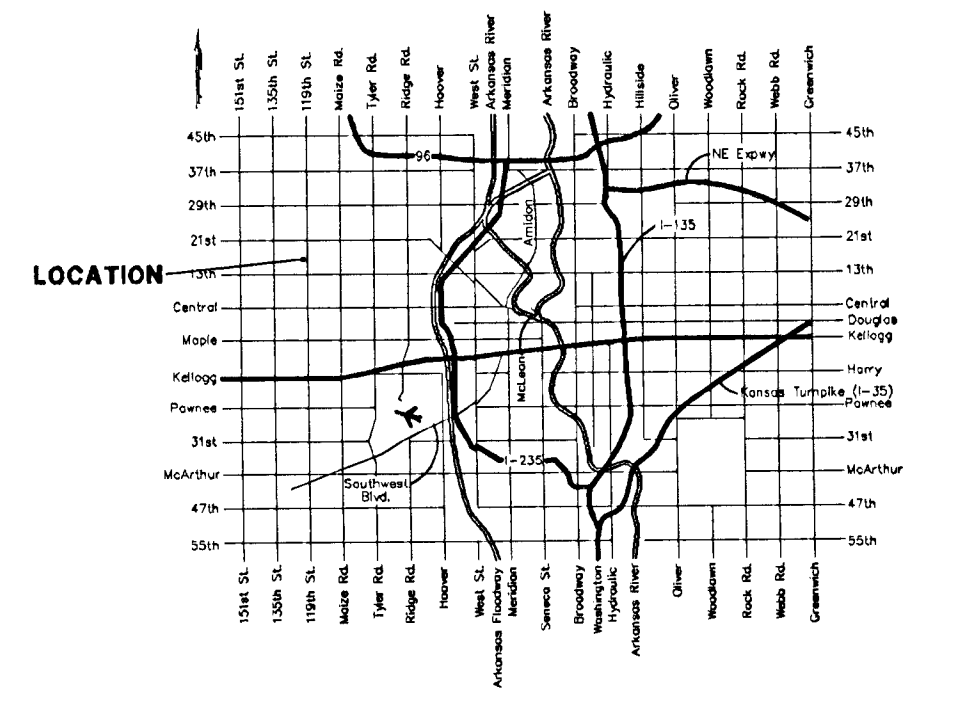


**OWNER:**  
James Goolsby  
628 W. 9th Street  
Wichita, Ks 67203

**LEGAL DESCRIPTION:**  
Beginning at NE cor. of the SE 1/4 of Sec. 13, Twp. 27-S, R-2-W of the 6th P.M., Sedgwick County, Kansas; thence South 149.75 feet more or less to a point 2492.5 feet north of SE cor. of said SE 1/4; thence west parallel with the south line of said SE 1/4, 100.00 feet; thence west parallel with the south line of said SE 1/4, 217.80 feet; thence north parallel with the east line of said SE 1/4, 251.79 feet more or less, to the north line of said SE 1/4; thence east 435.6 feet to beginning.

**BENCHMARK:**  
[X] Cut - Top of curb, W. side of 119th St. W next to catch basin.  
Elev. = 147.32 City Datum  
(1334.72 M.S.L.)

RESERVE "A" IS RESERVED FOR PRIVATE ACCESS DRIVE, DRAINAGE PURPOSES, OPEN SPACE, LANDSCAPING, AND UTILITIES AS CONFINED TO EASEMENTS.



**Note:**  
Portions of this property have been removed from the Special Flood Hazard Area (SPFA), by Letter of Map Revision (based on fill), (LOMR-F).

Drainage calculations have been performed with the following:  
 1. Average City of Wichita runoff coefficients for single family 1-acre lots  
 2. Hydrologic soil types B and C  
 3. Calculations of pipe capacity has been previously submitted to the City of Wichita's Storm Water Management Dept.  
 4. 100-yr Base Flood Elevation = 1334.0 msl = 146.6 (City Datum)

Drainage Area	Area (acres)	C <sub>s</sub>	C <sub>100</sub>	T <sub>0</sub> (min.)	I <sub>0</sub> (in/hr)	I <sub>100</sub> (in/hr)	Q <sub>0</sub> (cfs)	Q <sub>100</sub> (cfs)
1	4.5	0.35	0.56	15	3.83	7.37	6.0	19
2	1.1	0.35	0.56	15	3.83	7.37	1.5	4.5
3	0.9	0.35	0.56	15	3.83	7.37	1.2	3.7