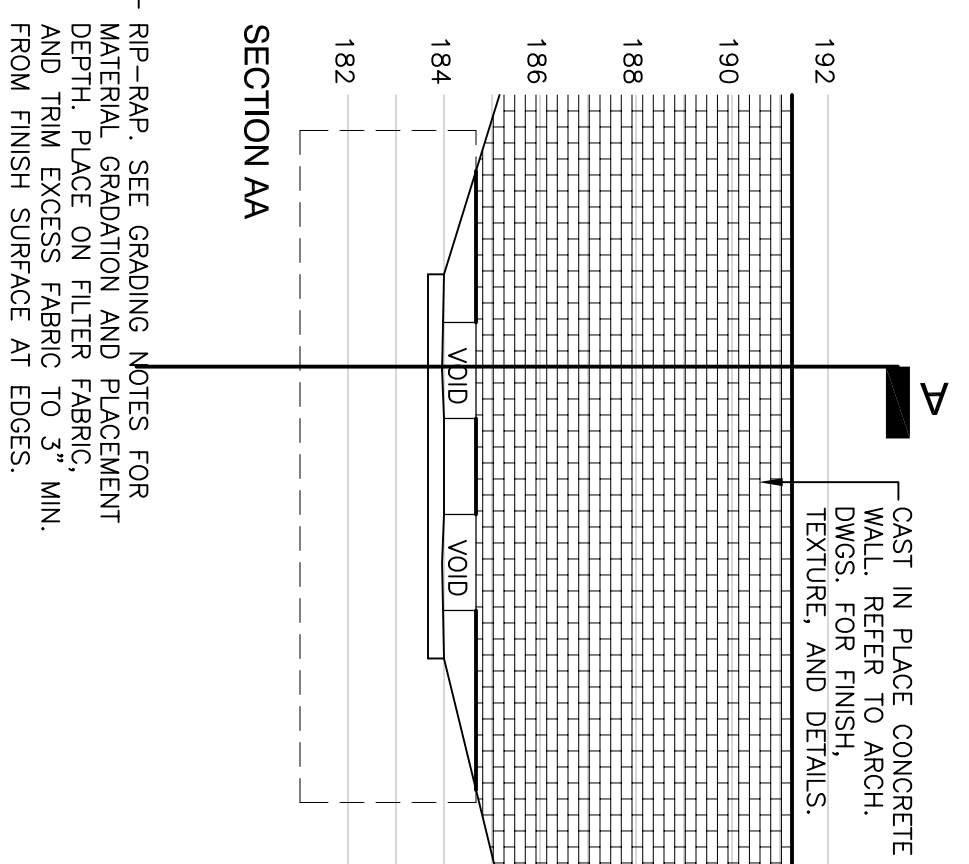
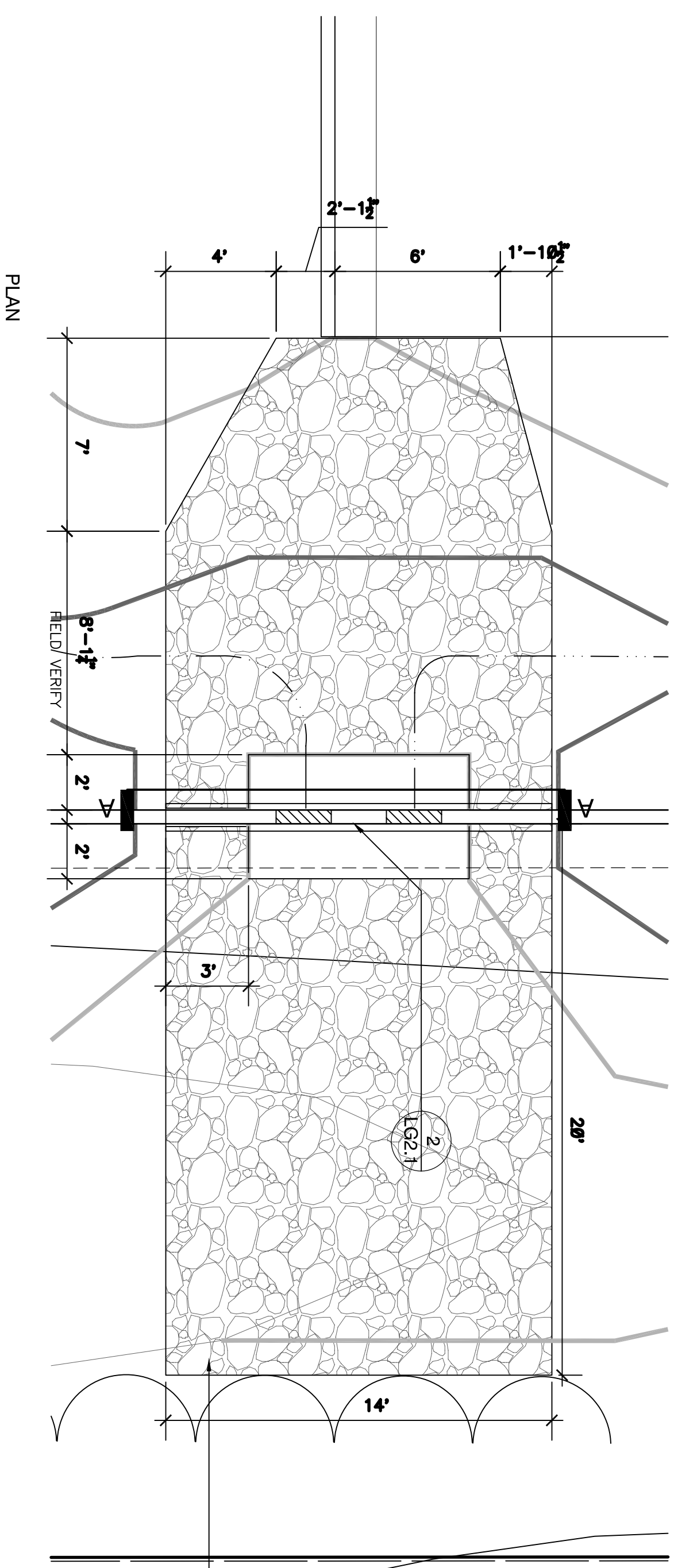
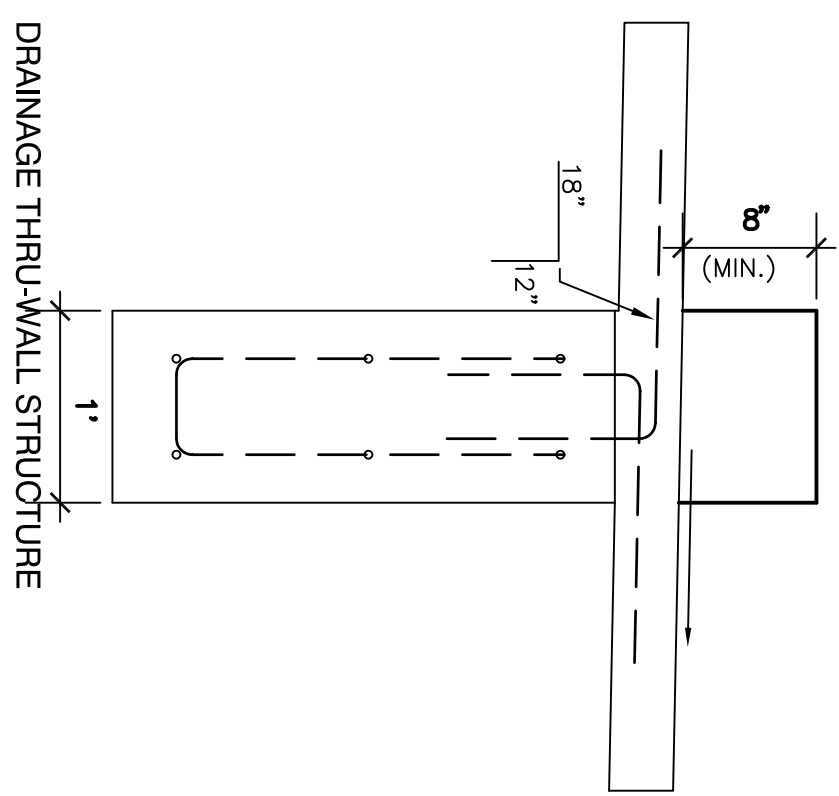
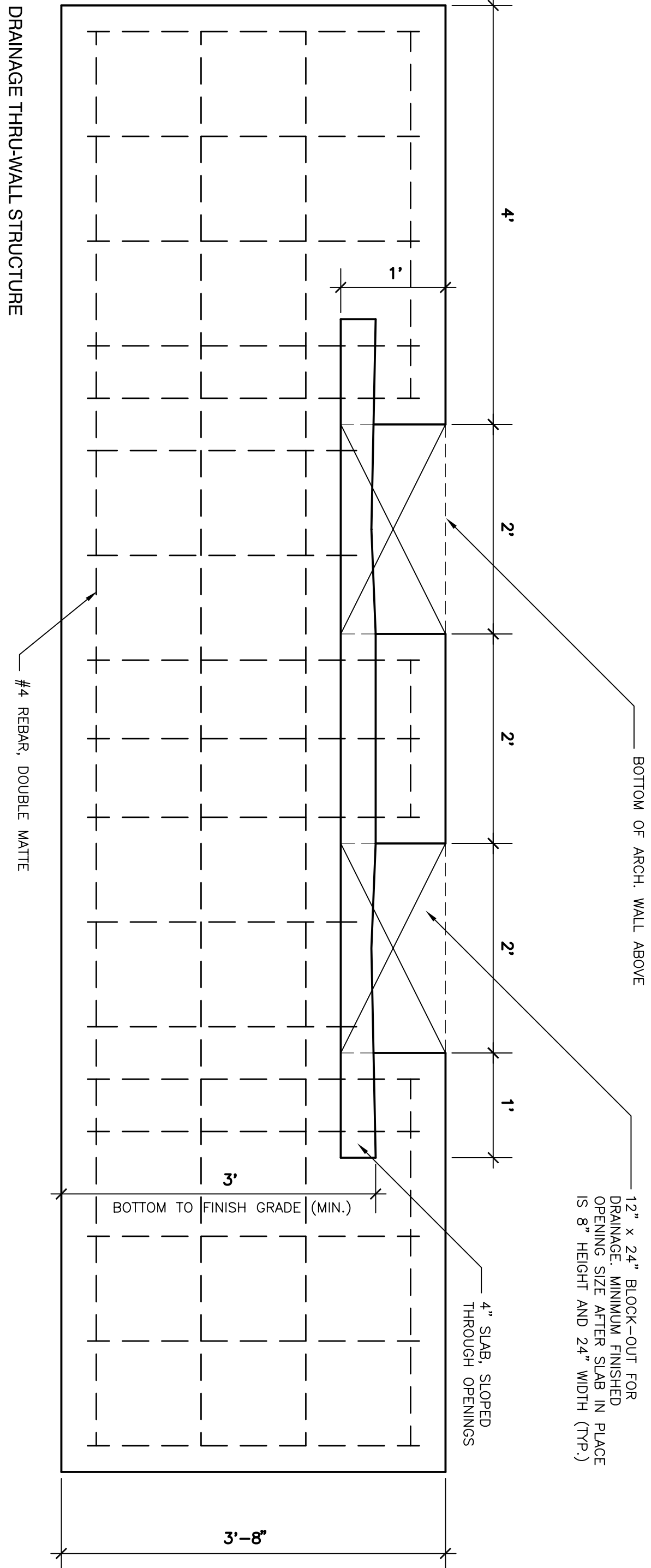
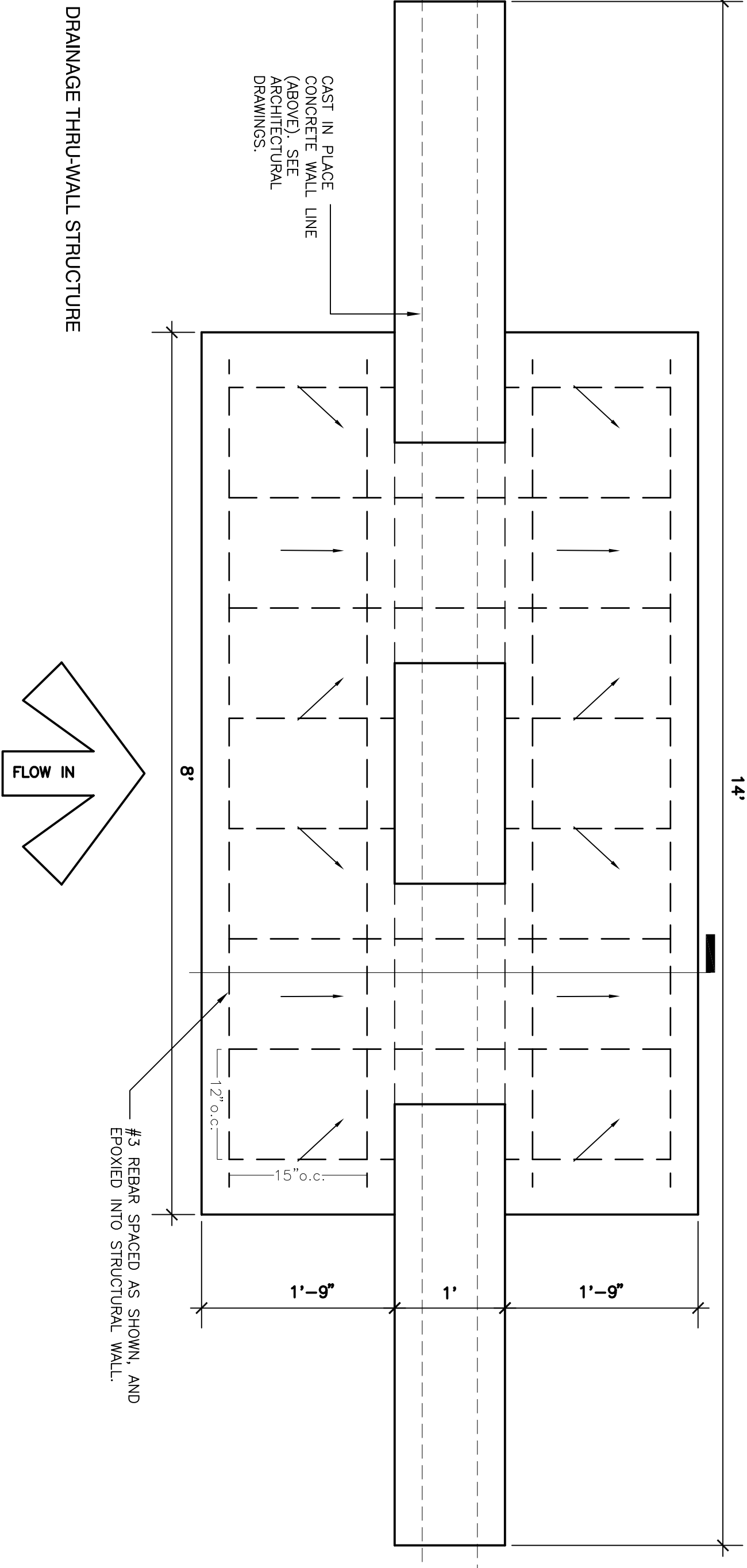


1 WALL SUPPORT STRUCTURE WITH DRAINAGE BLOCK-OUTS
1/4" = 1'-0"



2 DRAINAGE THRU-WALL STRUCTURE
1" = 1'-0"



- NOTES:**
1. CONCRETE: 4000psi, min.
 2. INSTALL STRUCTURAL WALL ON UNDISTURBED SUBGRADE. IN THE EVENT OF POOR BEARING CAPACITY (LESS THAN 3000PSF) PROVIDE AN 4\"/>
 - 3. CONTRACTOR MAY PROPOSE ALTERNATE SOLUTIONS TO LANDSCAPE ARCHITECT FOR MINIMUM DRAINAGE PENETRATIONS AS THE PENETRATIONS ARE PROVIDED.