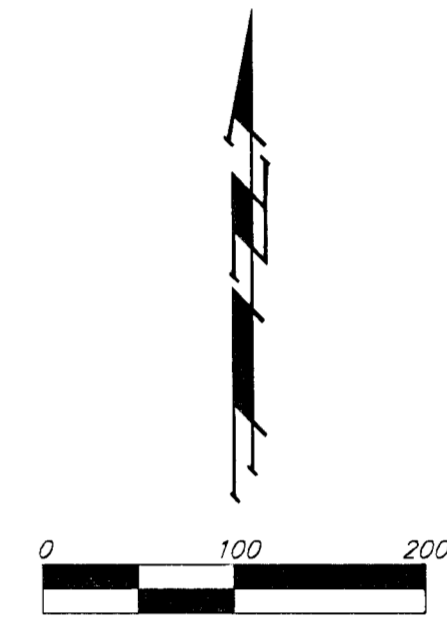
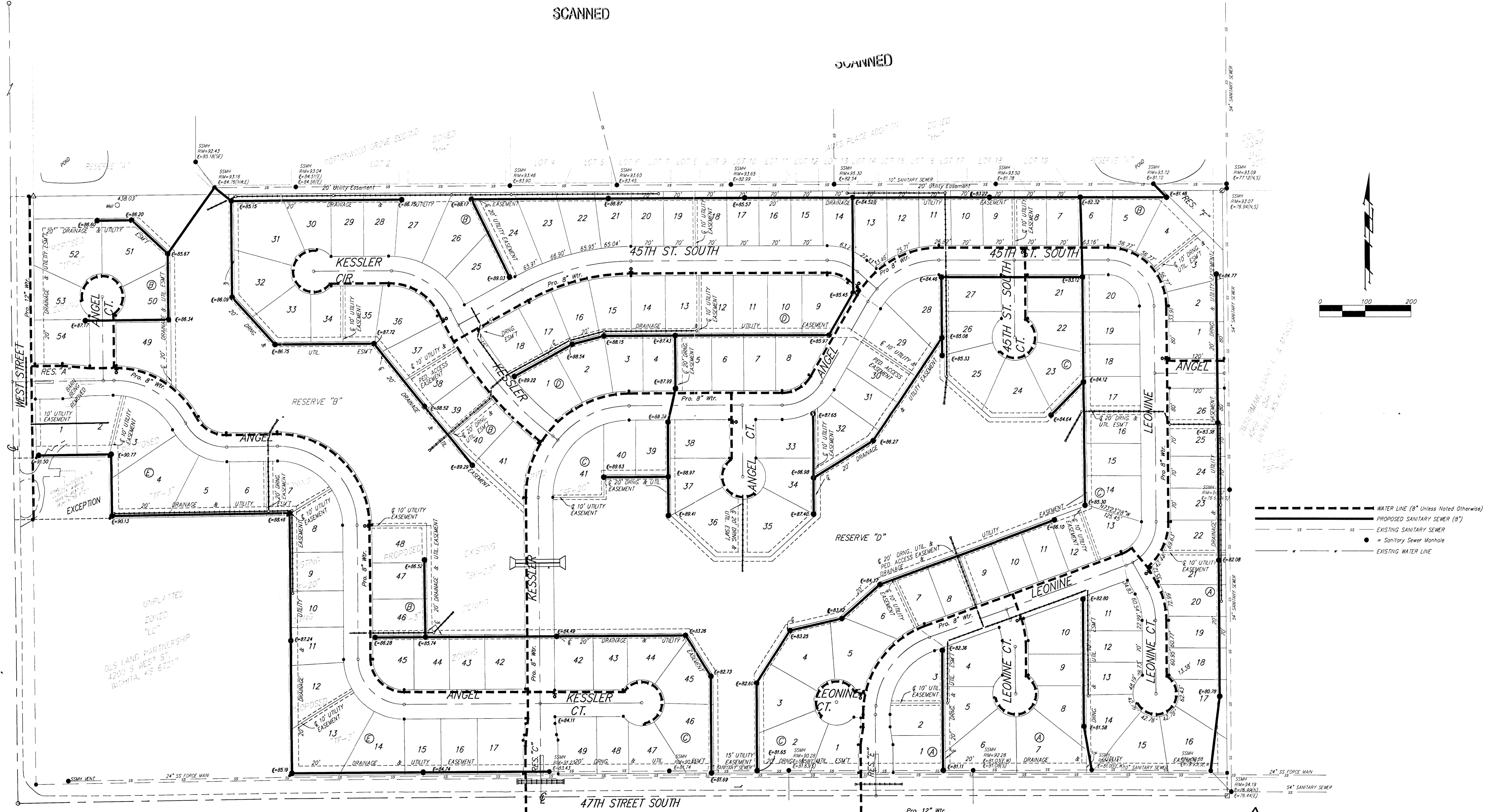


UTILITY PLAN ANGEL FIRE ADDITION TO WICHITA, SEDGWICK COUNTY, KANSAS

SCANNED

SCANNED



- WATER LINE (8" Unless Noted Otherwise)
- - - - - PROPOSED SANITARY SEWER (8")
- EXISTING SANITARY SEWER
- Sanitary Sewer Manhole
- EXISTING WATER LINE

PENNELLET, SHIRLEY D. 3RD ADDITION TO CHITWOOD ESTATES
 1105 W. 47TH ST. S. WICHITA, KS 67217
 ZONED "SF-20"
 SPRINGS, FRED J. ETUX & MARK W. & KELLY J. SPRINGS 6601 W. 35TH ST. S. WICHITA, KS 67215
 ZONED "SF-20"
 VERSAW ADDITION ZONED "SF-20"
 BROOKER, JOHN CALVIN 3215 W. 47TH ST. S. WICHITA, KS 67217
 ZONED "SF-20"
 PENNELLET, CLYTON A. 3245 W. 47TH ST. S. WICHITA, KS 67217
 ZONED "SF-20"
 WAHL, GLADYS & KENDALL WAHL 3201 W. 47TH ST. S. WICHITA, KS 67217
 ZONED "SF-20"

SCANNED