

FALCON POINTE APARTMENTS

4244 S. HYDRAULIC

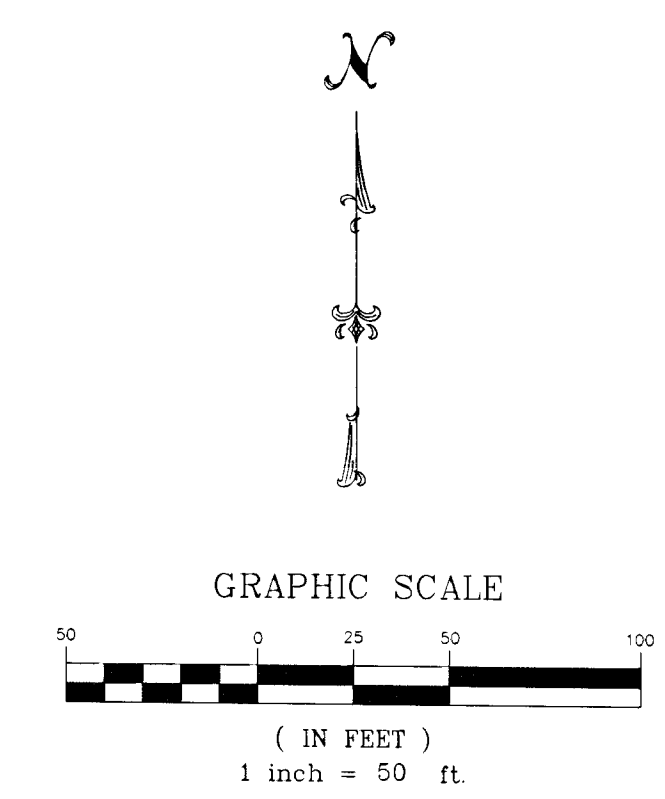
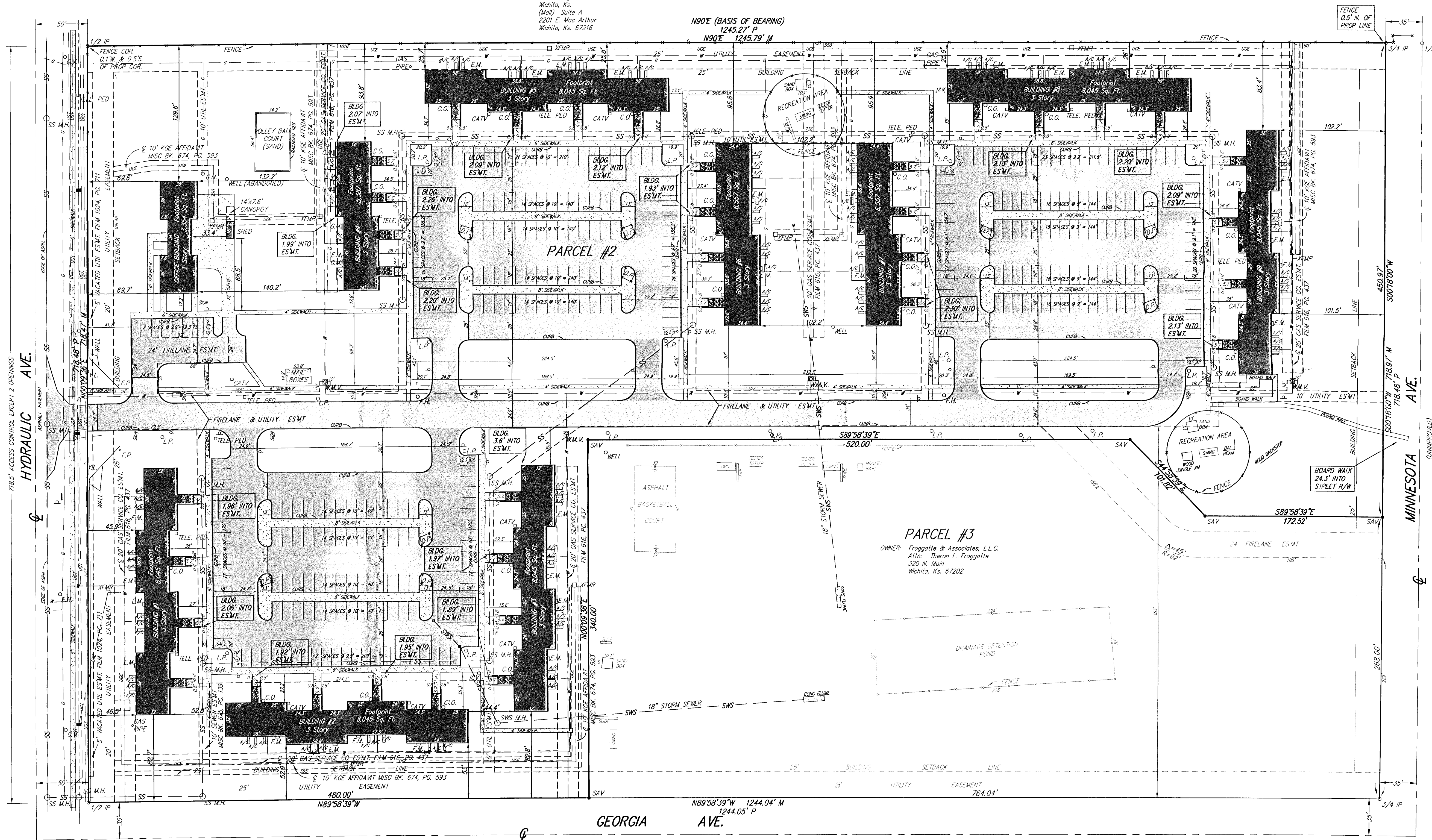
WICHITA, KANSAS

Lot 1
CAMELOT ADDITION

PARCEL #1: 894,740.14 Sq. Ft. ± / 20.54 Acres ±
PARCEL #2: 649,852.96 Sq. Ft. ± / 14.92 Acres ±
PARCEL #3: 244,887.18 Sq. Ft. ± / 5.62 Acres ±

OWNER: Willowood Mobil Home Park Inc.
1148 S. Hydraulic
Wichita, KS
(Mail) Suite A
2201 E. Mac Arthur
Wichita, KS 67216

N90°E (BASIS OF BEARING)
1245.27' P



- LEGEND
- D.P. = DUMPER PAD
 - G = GAS MAIN
 - W = WATER MAIN
 - SS = SANITARY SEWER
 - SWS = STORM WATER SEWER
 - UGE = UNDER GROUND ELECTRIC
 - UGT = UNDER GROUND TELEPHONE
 - TELE PED TELEPHONE PEDESTAL
 - CATV CABLE TELEVISION PEDESTAL
 - E.M. ELECTRIC METER
 - TRMR ELECTRIC TRANSFORMER
 - G.M. GAS METER
 - G.V. GAS VALVE
 - M.M.V. WATER METER VAULT
 - F.H. FIRE HYDRANT
 - C.O. CLEAN OUT
 - ICV IRRIGATION CONTROL VALVE
 - L.P. LIGHT POLE
 - POWER POLE
 - HIGH LINE POLE
 - ← EUY ANCHOR
 - 4 SIGN
 - *F.P. FLAG POLE
 - ♿ HANDICAP PARKING
 - ⦿ YARD LIGHT
 - ♣ BASKET BALL GOAL
 - SWS M.H. STORM WATER SEWER MANHOLE
 - SS M.H. SANITARY SEWER MANHOLE
 - WELL WATER WELL

- PROPERTY CORNER LEGEND
- 3/4 IP = 3/4" IRON PIPE (FOUND)
 - 1/2 IP = 1/2" IRON PIPE (FOUND)
 - SAV = 1/2" REBAR W/SAVOY CAP (SET)