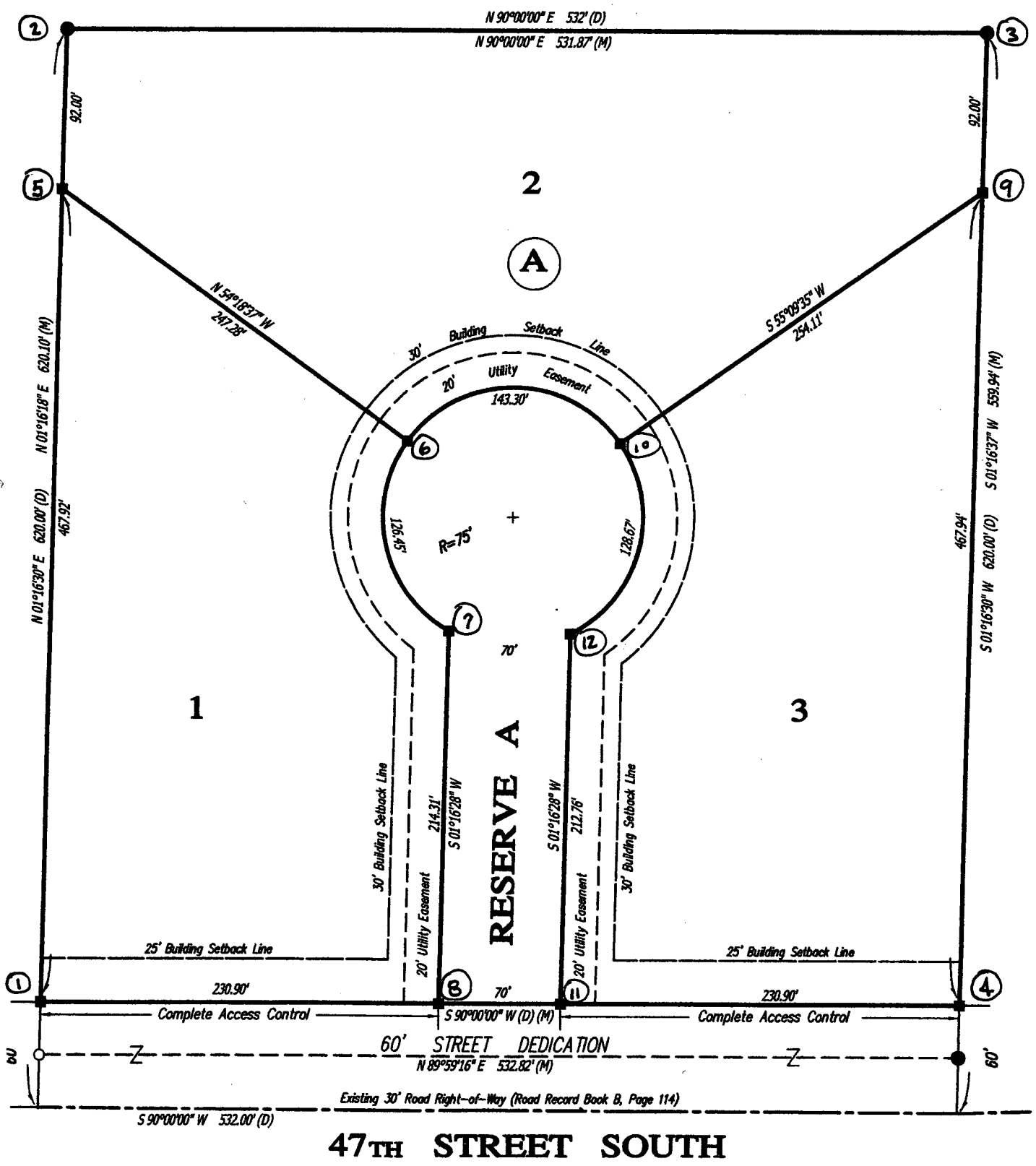


FINAL PLAT OF "AFTON LAKESIDE ESTATES" SEDGWICK COUNTY, KANSAS

IN THE SOUTHWEST QUARTER OF SECTION 14
TOWNSHIP 28 SOUTH, RANGE 3 WEST OF THE SIXTH P.M.

Closure Computations



Inverse with Area

08/13/2005 15:26

| PNTNO | BEARING | DISTANCE | NORTHING | EASTING | STATION | DESC |
|-------|---------------|----------|----------|-----------|---------|------|
| PP | | | 2405.40 | 2522.20 ① | 0.00 | |
| PP | N 01°16'18" E | 559.92 | 2965.18 | 2534.63 ② | 559.92 | |
| PP | S 90°00'00" E | 531.87 | 2965.18 | 3066.50 ③ | 1091.79 | |
| PP | S 01°16'37" W | 559.94 | 2405.39 | 3054.02 ④ | 1651.73 | |
| PP | N 89°59'56" W | 531.82 | 2405.40 | 2522.20 ① | 2183.55 | |

Closure Error Distance > 0.0000

Total Distance Inversed > 2183.55

AREA: 297721.41 SQ FT OR 6.83 ACRES

Perimeter

Inverse,with Area

08/13/2005 15:22

| PNTNO | BEARING | DISTANCE | NORTHING | EASTING | STATION | DESC |
|---|---------------|----------|----------|-----------|---------|------|
| PP | | | 2405.40 | 2522.20 ① | 0.00 | |
| | N 01°16'18" E | 467.92 | | | | |
| PP | | | 2873.21 | 2532.59 ⑤ | 467.92 | |
| | S 54°18'37" E | 247.28 | | | | |
| PP | | | 2728.95 | 2733.42 ⑥ | 715.20 | |
| RADIUS: 75.00 CHORD: 111.99 DEGREE: 76°23'40" DIR: LEFT | | | | | | |
| LENGTH: 126.45 DELTA: 96°35'50" TANGENT: 84.17 | | | | | | |
| CHORD BRG: S 12°36'32" E RAD-IN: S 54°18'37" E RAD-OUT: N 29°05'33" E | | | | | | |
| RADIUS PNTNO: PP N: 2685.19 E: 2794.34 | | | | | | |
| PP | | | 2619.65 | 2757.87 ⑦ | 841.65 | |
| | S 01°16'28" W | 214.31 | | | | |
| PP | | | 2405.39 | 2753.10 ⑧ | 1055.96 | |
| | N 89°59'56" W | 230.90 | | | | |
| PP | | | 2405.40 | 2522.20 ① | 1286.86 | |
| Closure Error Distance> 0.0000 | | | | | | |
| Total Distance Inversed> 1286.86 | | | | | | |
| AREA: 86011.03 SQ FT OR 1.97 ACRES | | | | | | |

LOT 1

Inverse.with Area

08/13/2005 15:20

| PNTNO | BEARING | DISTANCE | NORTHING | EASTING | STATION | DESC |
|------------------------------------|---|------------------|-------------------|-----------|---------|------|
| PP | | | 2965.18 | 2534.63 | 0.00 | |
| | S 90°00'00" E | 531.87 | | | | |
| PP | | | 2965.18 | 3066.50 | 531.87 | |
| | S 01°16'37" W | 92.00 | | | | |
| PP | | | 2873.21 | 3064.45 | 623.87 | |
| | S 55°09'35" W | 254.11 | | | | |
| PP | | | 2728.04 | 2855.89 | 877.97 | |
| | RADIUS: 75.00 | CHORD: 122.47 | DEGREE: 76°23'40" | DIR: LEFT | | |
| | LENGTH: 143.30 | DELTA: 109°28'12 | TANGENT: 106.06 | | | |
| | CHORD BRG: N 89°34'31" W RAD-IN: S 55°09'35" W RAD-OUT: S 54°18'37" E | | | | | |
| | RADIUS PNTNO: PP N: 2685.19 E: 2794.34 | | | | | |
| PP | | | 2728.95 | 2733.42 | 1021.27 | |
| | N 54°18'37" W | 247.28 | | | | |
| PP | | | 2873.21 | 2532.59 | 1268.55 | |
| | N 01°16'18" E | 92.00 | | | | |
| PP | | | 2965.18 | 2534.63 | 1360.55 | |
| Closure Error Distance> 0.0000 | | | | | | |
| Total Distance Inversed> 1360.55 | | | | | | |
| AREA: 93544.62 SQ FT OR 2.15 ACRES | | | | | | |

LOT 2

Inverse with Area

08/13/2005 15:24

| PNTNO | BEARING | DISTANCE | NORTHING | EASTING | STATION | DESC |
|-------|---|------------------|-------------------|--------------|---------|------|
| PP | | | 2405.39 | 3054.02 (4) | 0.00 | |
| | N 89°59'56" W | 230.90 | | | | |
| PP | | | 2405.39 | 2823.12 (11) | 230.90 | |
| | N 01°16'28" E | 212.76 | | | | |
| PP | | | 2618.10 | 2827.85 (12) | 443.66 | |
| | RADIUS: 75.00 | CHORD: 113.46 | DEGREE: 76°23'40" | DIR: LEFT | | |
| | LENGTH: 128.67 | DELTA: 98°17'47" | TANGENT: 86.73 | | | |
| | CHORD BRG: N 14°18'29" E RAD-IN: N 26°32'38" W RAD-OUT: S 55°09'35" W | | | | | |
| | RADIUS PNTNO: PP N: 2685.19 E: 2794.34 | | | | | |
| PP | | | 2728.04 | 2855.89 (10) | 572.33 | |
| | N 55°09'35" E | 254.11 | | | | |
| PP | | | 2873.21 | 3064.45 (9) | 826.43 | |
| | S 01°16'37" W | 467.94 | | | | |
| PP | | | 2405.39 | 3054.02 (4) | 1294.37 | |

Closure Error Distance > 0.0000

Total Distance Inversed > 1294.37

AREA: 85956.18 SQ FT OR 1.97 ACRES

Lot 3