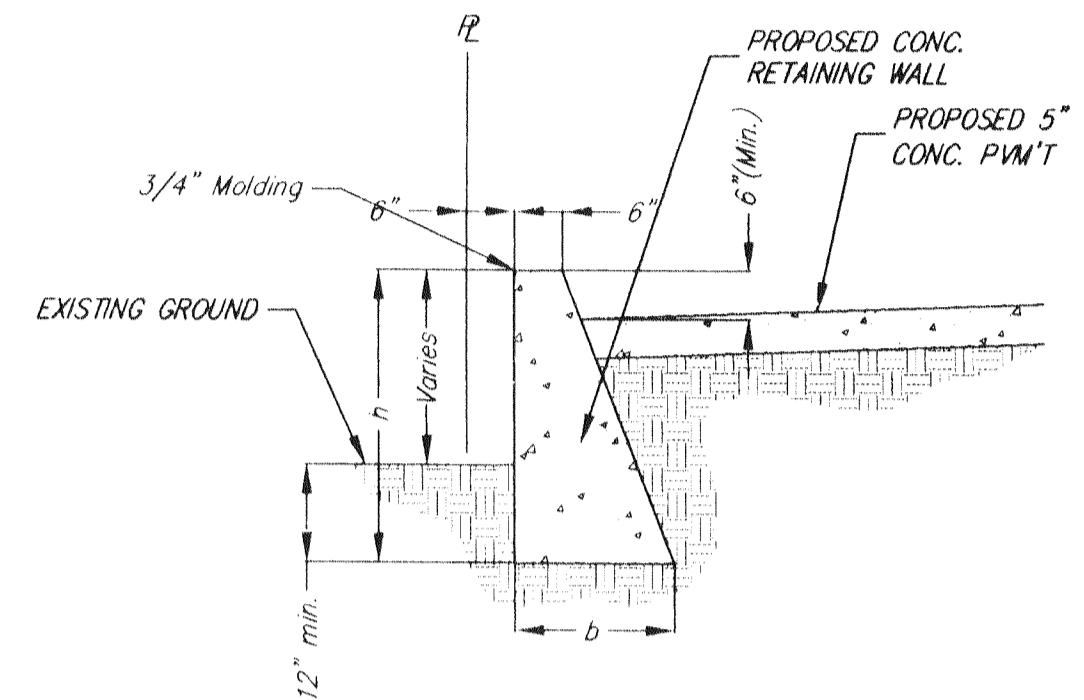
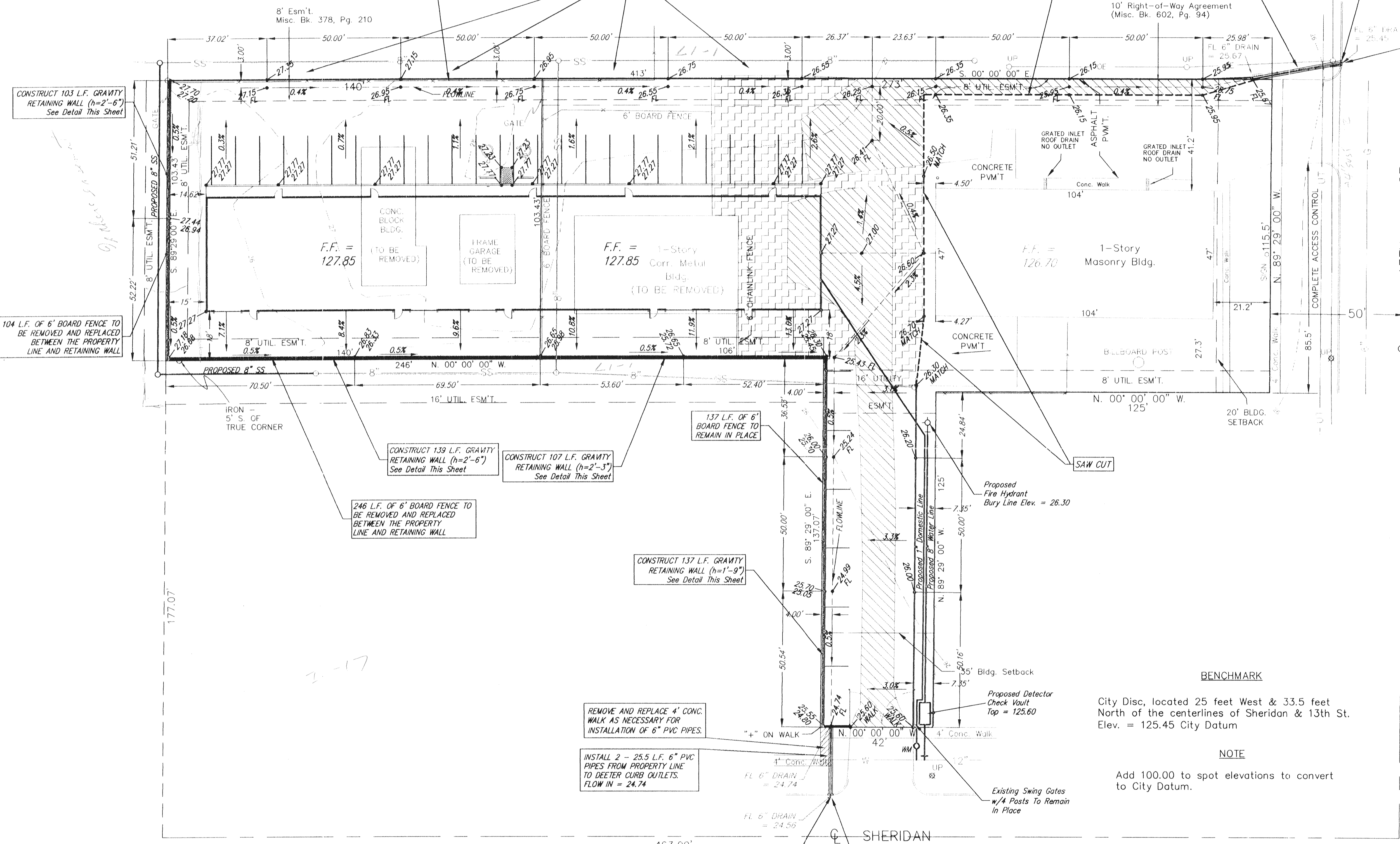


SRB

1" = 20'

Drainage Area = 0.69 Ac.  
 Hydrologic Soil Type "B"  
 $T_c = 15$  min.  
 $C_s = 0.88$   
 $C_{100} = 0.93$   
 $I_s = 4.56$  in.  
 $I_{100} = 7.37$  in.  
 $Q_s = 2.8$  cfs  
 $Q_{100} = 4.7$  cfs



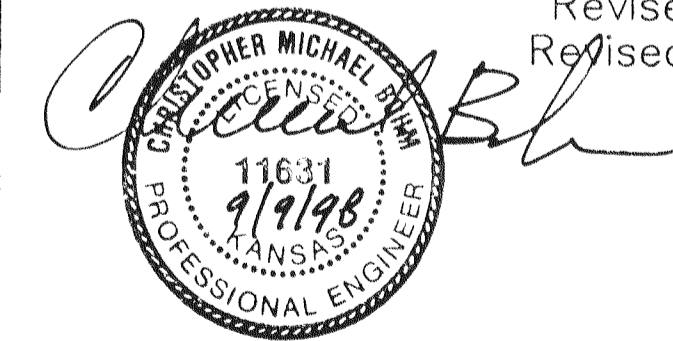
DIMENSIONS		C.Y. Conc. per Foot
h	b	
1'-9"	11"	0.046
2'-0"	13"	0.059
2'-3"	15"	0.073
2'-6"	17"	0.089
2'-9"	18 1/2"	0.104
3'-0"	20"	0.120

GRAVITY RETAINING WALL DETAIL

EXIST. CONC. PAVEMENT TO BE REMOVED (APPROX. 519 S.Y.)

EXIST. A.C. PAVEMENT TO BE REMOVED (APPROX. 639 S.Y.)

TOPOGRAPHIC SURVEY DONE BY:  
 MOEHRING & ASSOCIATES  
 CONSULTING ENGINEERS  
 WICHITA  
 July 29, 1993  
 Revised June 18, 1998  
 Revised June 23, 1998  
 Revised August 14, 1998



**BENCHMARK**  
 City Disc, located 25 feet West & 33.5 feet North of the centerlines of Sheridan & 13th St.  
 Elev. = 125.45 City Datum

**NOTE**  
 Add 100.00 to spot elevations to convert to City Datum.

Drainage Area = 0.45 Ac.  
 Hydrologic Soil Type "B"  
 $T_c = 15$  min.  
 $C_s = 0.88$   
 $C_{100} = 0.93$   
 $I_s = 4.56$  in.  
 $I_{100} = 7.37$  in.  
 $Q_s = 1.8$  cfs  
 $Q_{100} = 3.1$  cfs

**ANDERSON PROPERTIES ADDITION**  
**SITE GRADING PLAN - PIONEER CABLE**  
**WICHITA, KANSAS**

SRB 924 NORTH MAIN 316-264-8008  
 WICHITA, KANSAS 67203 FAX 264-4621  
 http://www.feist.com/~srb E-mail: srb@feist.com

**SAVOY, RUGGLES & BOHM, P. A.**  
 ENGINEERING & SURVEYING

PROJECT NUMBER

DESIGN: JDS	DRAWN: JDS	UTILITY: JDS	REVIEW: C. BOHM	DATE: Aug. 20, 1998	REVISED: Sept. 9, 1998
-------------	------------	--------------	-----------------	---------------------	------------------------

SRB JOB: 1102  
 SHEET: 1  
 OF: 1