

LEGAL DESCRIPTION

Lot 1, Block A, F.O. Moore Second Addition,
to Wichita, Sedgwick County, Kansas,

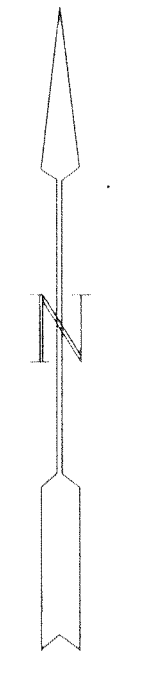
together with

A tract of land beginning 463' North &
177.07' East of the Southwest Corner of
the Southeast Quarter of Section 12,
Township 27 South, Range 1 West of
the Sixth P.M., Sedgwick County, Kansas;
thence East 103.43'; thence South 140';
thence West 103.43'; thence North 140'
to beginning.

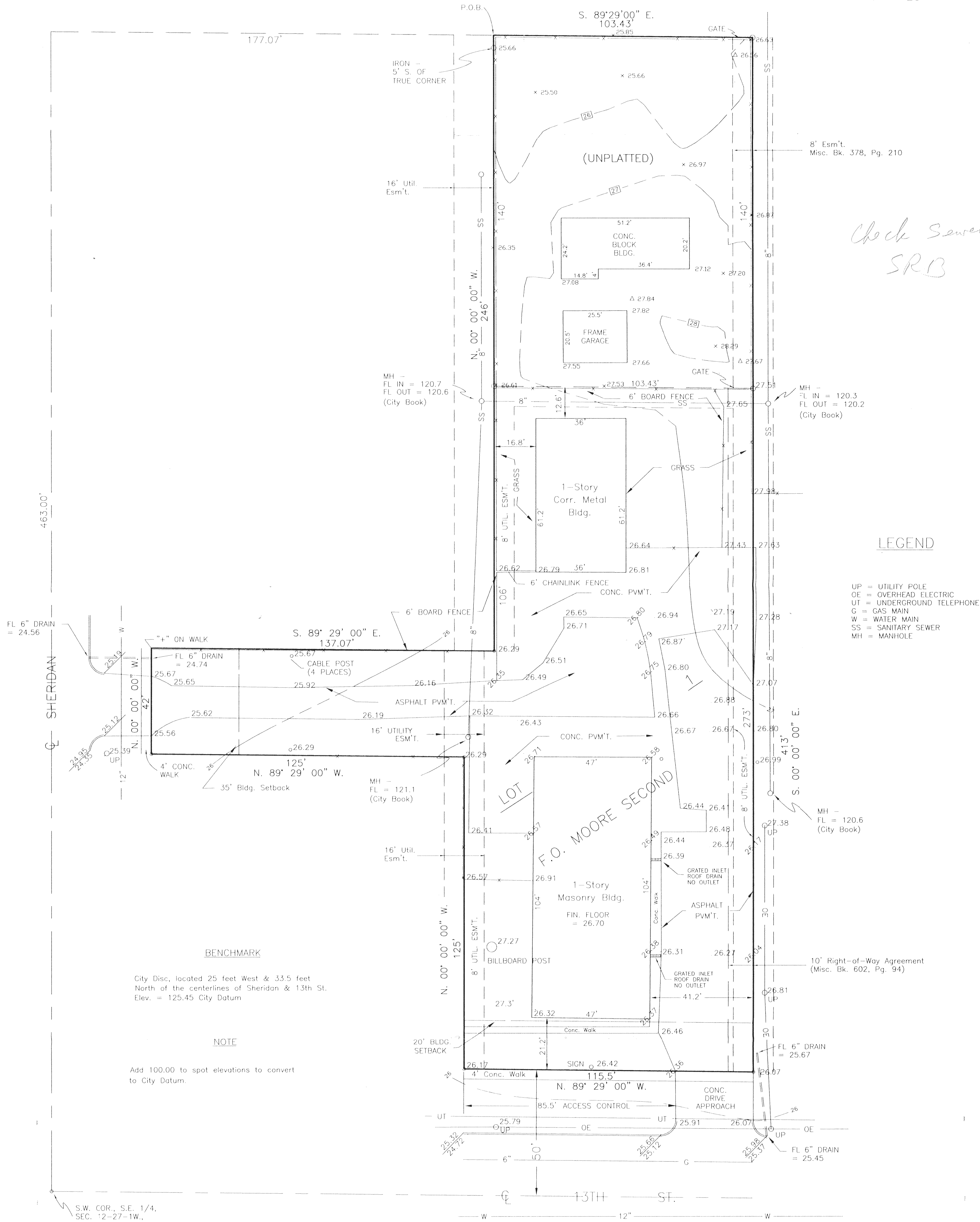
PRELIMINARY PLAT

of

ANDERSON PROPERTIES ADDITION
Wichita, Sedgwick County, Kansas



1" = 20'



*Check Sewer w/
SRB*

LEGEND

- UP = UTILITY POLE
- OE = OVERHEAD ELECTRIC
- UT = UNDERGROUND TELEPHONE
- G = GAS MAIN
- W = WATER MAIN
- SS = SANITARY SEWER
- MH = MANHOLE

BENCHMARK

City Disc. located 25 feet West & 33.5 feet
North of the centerlines of Sheridan & 13th St.
Elev. = 125.45 City Datum

NOTE

Add 100.00 to spot elevations to convert
to City Datum.

S.W. COR., S.E. 1/4,
SEC. 2-27-1W,
SEDGWICK CO., KS.

MOEHRING & ASSOCIATES
CONSULTING ENGINEERS
WICHITA

June 18, 1998
Revised June 23, 1998
Revised August 14, 1998



NOTE

BASED UPON INFORMATION CONTAINED WITHIN THE
FIRM FLOOD INSURANCE RATE MAP, COMMUNITY-
PANEL NUMBER 200328 0010 B, CITY OF WICHITA,
KANSAS, SUBJECT PROPERTY IS IN ZONE B.

C:\SC13\WORK\F0MOORE1.DWG