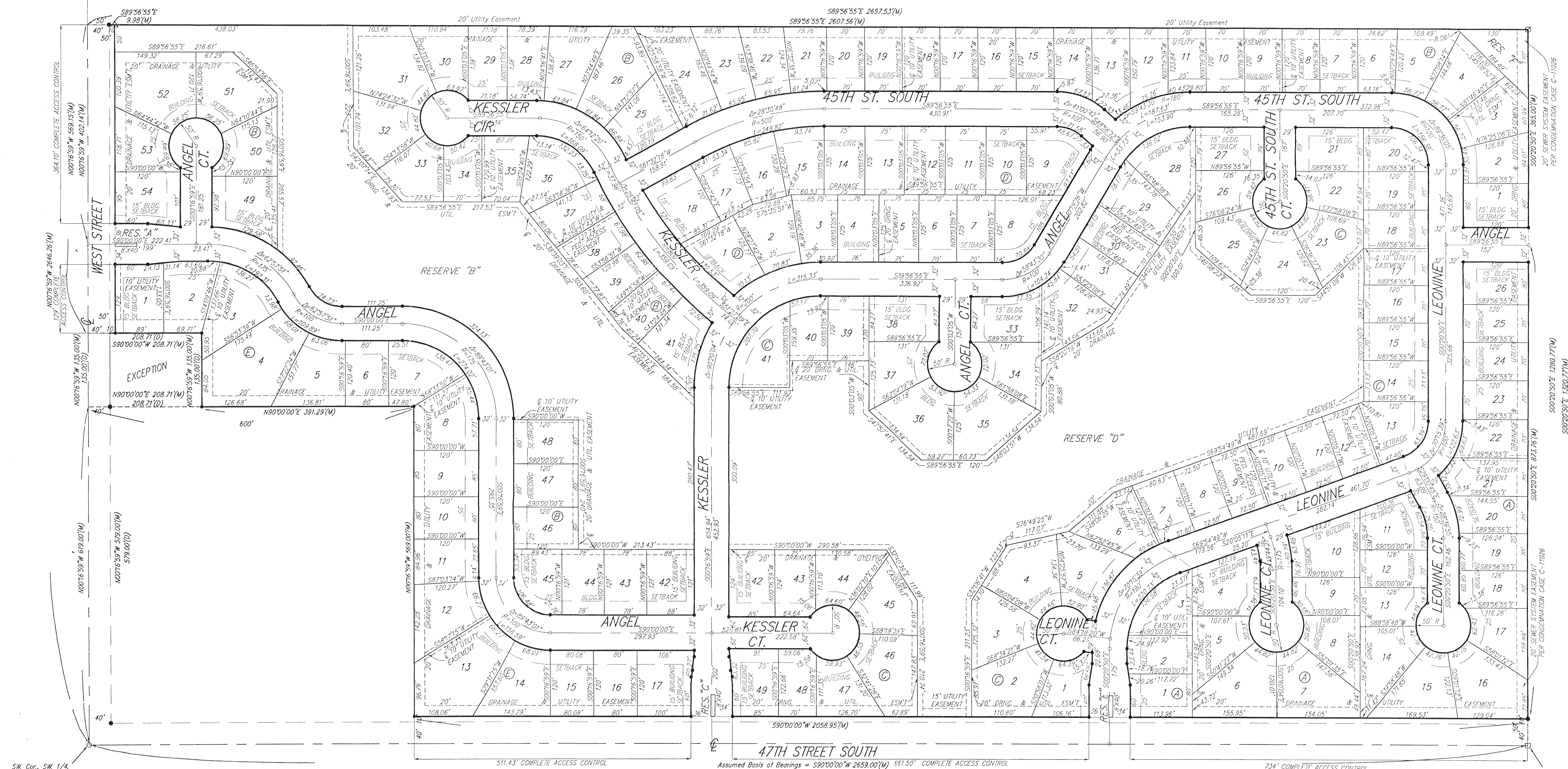


ANGEL FIRE

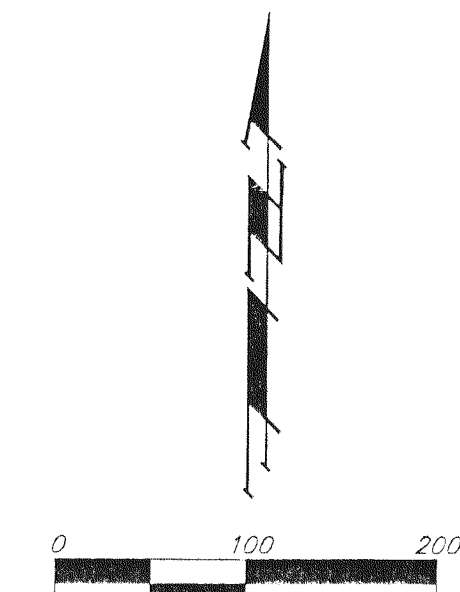
AN ADDITION TO WICHITA, SEDGWICK COUNTY, KANSAS

NW Cor., SW 1/4
Sec. 13, Twp. 28S,
Range 1 West



SW Cor., SW 1/4
Sec. 13, Twp. 28S,
Range 1 West

SE Cor., SW 1/4
Sec. 13, Twp. 28S,
Range 1 West



BENCHMARK:
"1" CUT 56.7' SE OF THE SE COR OF THE SW 1/4, TO THE RE CORNER CONCRETE LIFT STATION PAD. ELEV.=91.85 CITY DATUM

- = #4 Baughman Rebar Set
- = #4 Rebar in Thimble Found
- = 3/4" Iron Pipe in Thimble Found
- ⊕ = #4 Mid Kansas Rebar Found
- ⊙ = Mid Kansas 3/4" Iron Pipe Found

(M) = MEASURED
(D) = DESCRIBED